



PARTS & INSTALLATION INSTRUCTIONS SUPER V - 68 QUIK LIFT®

PART LIST

Item	Part No.	Qty.	Description
	15002	1	Lift and P.A. Ass'y. (Complete) 12 volt
1	15009	1	• Lift Ass'y. (Unit only) 12 volt
2	05815	1	•• Lift Cylinder 1-3/4 x 8 SAE-6
3	15010	1	•• Back Cover
4	15011	1	•• Front Cover
5	15046	1	•• Cover Hardware Kit
6	22460	1	•• SAE-6 90 Degree Elbow M x F
7	22675	1	•• Hose 1/4 x 9-1/4" SAE-6 w/swivel one end
8	22420	2	•• Hose 1/4 x 33" M-6 x Flat Face Seal / Adapter
9	15595	2	••• O-ring Kit Hose End and Adapter
10	-----	2	•••• O-Ring M-6 Hose End /Adapter
11	-----	1	•••• O-Ring Adapter Flat Face
12	22418	2	•• Hose 3/8 x 33" M-6 x Flat Face Seal / Adapter
9	15595	2	••• O-ring Kit Hose End and Adapter
10	-----	2	•••• O-Ring M-6 Hose End /Adapter
11	-----	1	•••• O-Ring Adapter Flat Face
13	22696	1	•• Super Vee Plow Side Harness
14	07186	2	• Double Acting Wing Ram with Fittings
15	05755	1	•• Double Acting Ram 1-1/2" x 12" SAE-6
16	22460	1	•• SAE-6 90 Degree Elbow M x F
17	05024	1	• Power Cable
18	22691	1	• Universal Truck Side Harness
19	22695	1	• Super Vee Controller
20	15370	1	• Starter Solenoid - 12 Volt
21	19592	1	• Lift Arm
22	08732	1	• Hardware Bag 15002
23	11101	1	•• Hinge Pin
24	20152	5	•• Bolt H 5/8-11 x 5" Gr. 5
25	20153	1	•• Bolt H 5/8-11 x 5-1/2" Gr. 5
26	20309	6	•• Locknut 5/8-11
27	21398	2	•• Self Tapping Screw 1/4-14 x 3/4
28	21984	1	•• Hair Pin Cotter
29	08202	1	• Hardware Bag Plug Bracket
30	19607	1	•• Plug Bracket
31	19609	1	•• Plate
32	20027	2	•• Bolt H 5/16-18 x 1 Gr. 2
33	22658	2	•• Bolt H 5/16-18 x 3 Full Thread Gr. 2
34	20326	4	•• 5/16 Lockwasher
35	20525	4	•• 5/16-18 Finish Nut

Parts indented are included in the carton, bag or assembly under which they are indented.

Meyer Products LLC reserves the right, under its continuing product improvement program, to change construction or design details, specifications and prices without notice or without incurring any obligation.

Meyer Products LLC.
18513 Euclid Ave. • Cleveland, Ohio 44112-1084
Phone 486-1313 (Area Code 216)
www.meyerproducts.com • email info@meyerproducts.com



Meyer Products LLC.
6 Angell Lane • Damariscotta, ME 04543-4507
Phone 563-2227 (Area Code 207)
www.meyerproducts.com • email info@meyerproducts.com

GENERAL INFORMATION

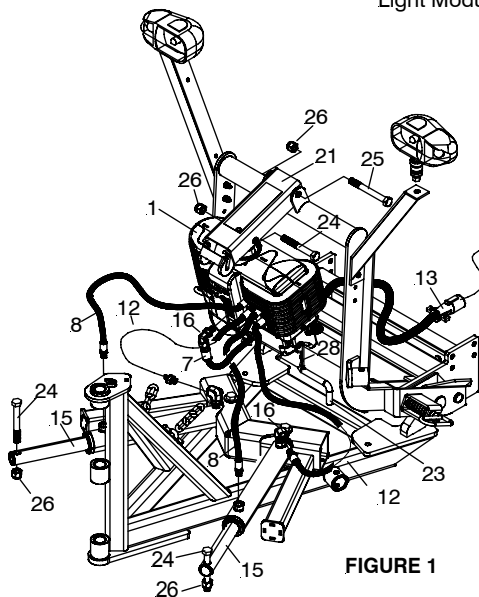
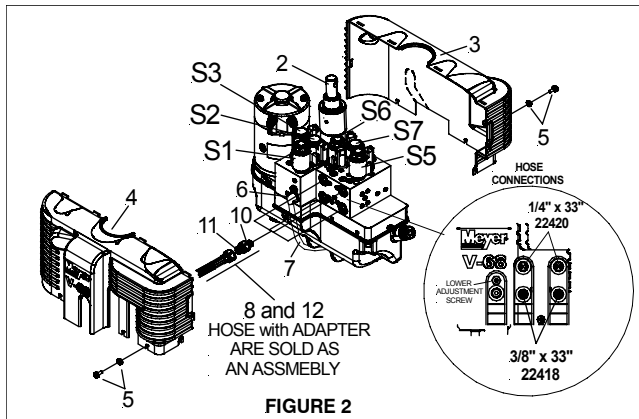
CAUTION: Always disconnect battery prior to installation.

SAFETY PRECAUTIONS should be used when **Quik Lift®** is in a **RAISED** position. **LOWER** plow to the ground when vehicle is **PARKED**.

OVERHAUL and SERVICE information is covered on separate instructions.

Note:

1. Connect ground cable to negative side of battery for a solid connection to ground.
2. Caution: Route all cables away from moving engine parts, Manifolds, and sharp sheet metal.
3. For weather protection, tape all electrical connections at front of vehicle.
4. The vehicle must be equipped with a "Heavy Duty Battery" (70 Amp, Hr. Min.), 550 C.C.A. and "Alternator" (60 Amp. Min.) to obtain maximum performance.
5. Follow these instructions explicitly. Warranty does not apply to a Meyer product which has been negligently or improperly assembled or installed.



ADDITIONAL BATTERY CONNECTIONS

- a. When attaching cables to battery with side post terminals, use M.P. Adaptor Part #21976 and attach as shown in Figure 1.
- b. Figure 2 illustrates the method of using a repair type terminal connector which is original equipment on some vehicles.

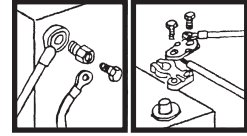


Fig. 1

Hydraulic Solenoid Color Code:

OPERATION - SOLENOID COMBINATION

- RAISE** - Motor Solenoid + S1 + S2
- LOWER** - Motor Solenoid + S1 + S2 + S3
- LEFT ANGLE** - Motor Solenoid ONLY
- LEFT EXTEND** - Motor Solenoid + S5
- LEFT RETRACT** - Motor Solenoid + S7
- RIGHT ANGLE** - Motor Solenoid + S3
- RIGHT EXTEND** - Motor Solenoid + S3 + S6
- RIGHT RETRACT** - Motor Solenoid + S3 + S7
- SCOOP** - Motor Solenoid + S2 + S3 + S5 + S6 + S7
- VEE** - Motor Solenoid + S2 + S3 + S7

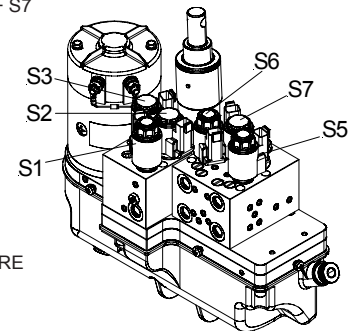
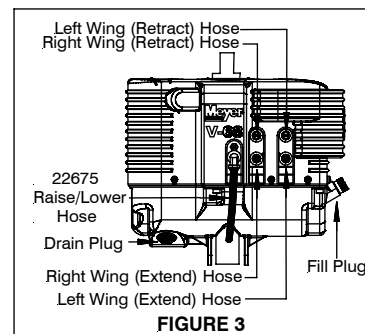
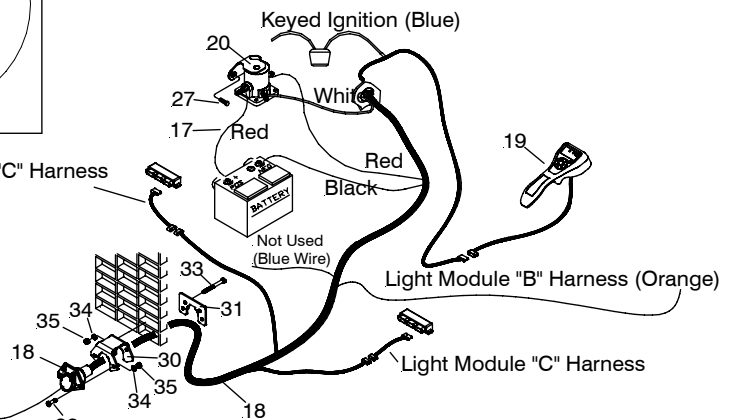


FIGURE 4

COIL COLOR CODE

MOTOR SOLENOID - WHITE WIRE

- S1** - RED WIRE
- S2** - BLACK WIRE
- S3** - GREEN WIRE
- S5** - YELLOW WIRE
- S6** - BLUE w/WHITE STRIPE
- S7** - PURPLE WIRE
- GROUND WIRE EACH COIL** BLACK w/WHITE STRIPE



INSTALLATION INSTRUCTIONS

- A. Attach Lift Arm (21) packed in the 15002 Hydraulic Carton to Lift Frame using Bolt H 5/8-11 x 5-1/2" (25) and 5/8-11 Locknut (26). Install the V-68 Lift Assembly (1) to Lift Frame Using Hinge Pin (23) with Hair pin cotter (28) and attach the lift ram to the Lift Arm (21) using Bolt H 5/8-11 x 5" (24) and 5/8-11 Locknut (26).

WARNING: Lift arm should be removed from vehicle if / when snow plow is removed.

- B. Attach fixed end of Wing Cylinders (15) to the A-Frame with a 5/8-11 x 5" bolt (24) and 5/8-11 locknut (26) on each side.
- C. Attach live end of Wing Cylinder rod (15) to the Wings using a 5/8-11 x 5" bolt (24) and 5/8-11 locknut (26) on each side.
- D. Attach Wing Cylinders hoses by removing the caps from the hoses (8 & 12) and plugs from the Double Acting Ram (15). (Do not discard they can be used for servicing the unit). Prior to hose installation, realign both 90 degree elbows. Attach the left wing 1/4" hose (8) to the rod or live end of left ram (15). Attach the left wing 3/8" hose (12) to the fixed end of left ram (15). Attach the right wing 1/4" hose (8) to the rod or live end of right ram (15). Attach the right wing 3/8" hose (12) to the fixed end of right ram (15). As shown in Figure 1.
- E. Attached the other end of hoses to valve assembly. Thread hose face seal fittings onto the adapters hand tight. Then tighten locking nut another 30 to 45 degrees of rotation.

Wing Cylinders furnished with this carton have been factory filled with the proper amount of fluid. If for any reason it is necessary to add fluid to reservoir or to bleed the Wing Cylinders, proceed as follows:

- Remove Relief Valve from reservoir to add fluid during charging and bleeding.
- Temporarily loosen both hose connections at the Power Angling Cylinders. Base end of Cylinder must be higher than Rod end to enable trapped air to escape.
- Operate the Wings in both directions until fluid leaks out at both points in a steady flow.
- Retighten the hose connections.

NOTE: Proper fluid level is to the bottom of the filler neck. It must be checked with the lift arm fully retracted.

- F. Run Universal Truck Side Harness (18) through a hole in grille and into the engine compartment. Sandwich vehicle grill between Plug Bracket (30) and Plate (31) using Bolt H 5/16-18 x 3" (33), 5/16 Lockwasher (34) and 5/16-18 Finish nut (35). Secure Universal Truck Side Harness (18) to Plug Bracket (30) using Bolt H 5/16-18 x 1" (32), 5/16 Lockwasher (34) and 5/16-18 Finish nut (35).

Caution: Secure Universal Truck Side Harness (18) from any hot / moving parts with tie wraps as needed.

- G. Drill a 1-1/4" Diameter Hole thru firewall to extend the harness into the cab of the vehicle. Fused lead from Universal Truck Side Harness (18) must be attached to terminal in fuse panel that is activated only when the ignition key is "on."
- H. Install Motor Solenoid (20) to metal surface in engine compartment using Self Tapping Screws (27). (Solenoid must be grounded to operate). Attach Red Power Cable (17) to a large terminal on Motor Solenoid (20). Attach Black Ground Cable (18) to negative (-) terminal of battery. Attach Red Power Cable (18) to positive (+) terminal of battery and remaining large terminal on Motor Solenoid (20). Attach small white wire from harness (18) to small terminal on Motor Solenoid (20). Note: Blue wire is not used.

For snow plow light installation see separate instructions.

Orange wire on Harness (18) will attach to both orange wires of the "B" harness supplied in the Light Module Kit. Reference Form 1-757

Route Cables "C" (Yellow) from module to Harness (18). Connect both "C" Harness female ends to the male corresponding ends of the Harness (18).

Connect both male ends from the snow plow light to the female ends on the Super-V Plow Side Harness (13).

Check snow plow light blinkers to make sure the wires have not been reversed.

Note: All electrical connections should have both ends coated with a dielectric grease prior to final installation. This will ensure a good connection and help in preventing corrosion.

- Refer to Operation and Maintenance Manual for complete controller operation.
- After all electrical connections have been made the drop speed of the plow may be evaluated / adjusted. To adjust, loosen up the hex nut and adjust in to slow the drop speed and out to make it faster. After ideal drop speed it achieved, retighten the hex nut.

After cycling of the plow, recheck oil level.

