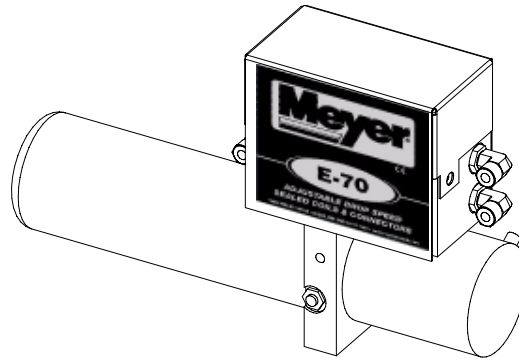


PARTS & INSTALLATION INSTRUCTIONS E-70 OUT FRONT AGGRESSOR HYDRAULICS



PARTS LIST

| Item | Part No. | Qty | Description |
|------|--------------|----------|--|
| | 15825 | 1 | E-70 Out Front Hydraulic Carton |
| 1 | 15826 | 1 | • E-70 Out Front Hydraulic Unit w/ Cover |
| 2 | 22690 | 1 | • Pistol Grip Controller |
| 3 | 22691 | 1 | • Universal Vehicle Side Harness |
| 4 | 22692 | 1 | • Hydraulic Side Harness |
| 5 | 05872 | 1 | • Lift Ram 3 x 8 DA |
| 6 | 15370 | 1 | • Motor Solenoid |
| 7 | 05024 | 1 | • Power Cable 36" |
| 8 | 07707 | 2 | • Ram Assy 2-1/2" x 11-1/2" Stroke SA |
| 9 | 05874 | 1 | •• Ram 2-1/2" x 11-1/2" Stroke SA |
| 10 | 22722 | 1 | •• Elbow |
| 11 | 22723 | 1 | •• Hose |
| | 08782 | 1 | • Hardware Bag E-70 Hydraulic Unit |
| 12 | 22723 | 1 | •• Hose |
| 13 | 22722 | 4 | •• Elbow |
| 14 | 08474 | 1 | •• Relief Valve |
| 15 | 22323 | 4 | •• 1" x 4-1/4" Cylinder Pin |
| 16 | 20420 | 4 | •• 1/4 Dia. x 2 Cotter Pin CP |
| 17 | 21262 | 2 | •• Washer Flat 1" SAE CP |
| 18 | 22324 | 2 | •• 1" x 3-1/2" Cylinder Pin |
| 19 | 22083 | 2 | •• Lynch Pin |
| 20 | 20050 | 3 | •• Bolt H 3/8-16 x 1-1/4" Gr.2 |
| 21 | 20353 | 3 | •• Flatwasher 3/8" |
| 22 | 20327 | 3 | •• Lockwasher 3/8" |
| 23 | 21398 | 2 | •• Self Tapping Screw 1/4-14 x 3/4" |
| | 08202 | 1 | • Hardware Bag Plug Bracket |
| 24 | 19607 | 1 | •• Plug Bracket |
| 25 | 19609 | 1 | •• Plate |
| 26 | 20027 | 2 | •• Bolt H 5/16-18 x 1 Gr. 2 |
| 27 | 22658 | 2 | •• Bolt H 5/16-18 x 3 Full Thread Gr. 2 |
| 28 | 20326 | 4 | •• 5/16 Lockwasher |
| 29 | 20525 | 4 | •• 5/16-18 Finish Nut |
| 30 | 13032 | 1 | • Plate |
| 31 | 13035 | 1 | • Bracket |
| 32 | 20140 | 2 | • Bolt H 5/8-11 x 1-3/4" Gr. 5 |
| 33 | 20309 | 2 | • Locknut 5/8-11 |
| 34 | 22791 | 1 | • Hose |

Parts indented are included in the carton, bag or assembly under which they are indented.

Meyer Products LLC reserves the right, under its continuing product improvement program, to change construction or design details, specifications and prices without notice or without incurring any obligation.

Meyer Products LLC
18513 Euclid Ave. • Cleveland, Ohio 44112-1084
Phone 486-1313 (Area Code 216)
www.meyerproducts.com • email info@meyerproducts.com



Meyer Products LLC
6 Angell Lane • Damariscotta, ME 04543-4507
Phone 563-2227 (Area Code 207)
www.meyerproducts.com • email info@meyerproducts.com

Figure 1

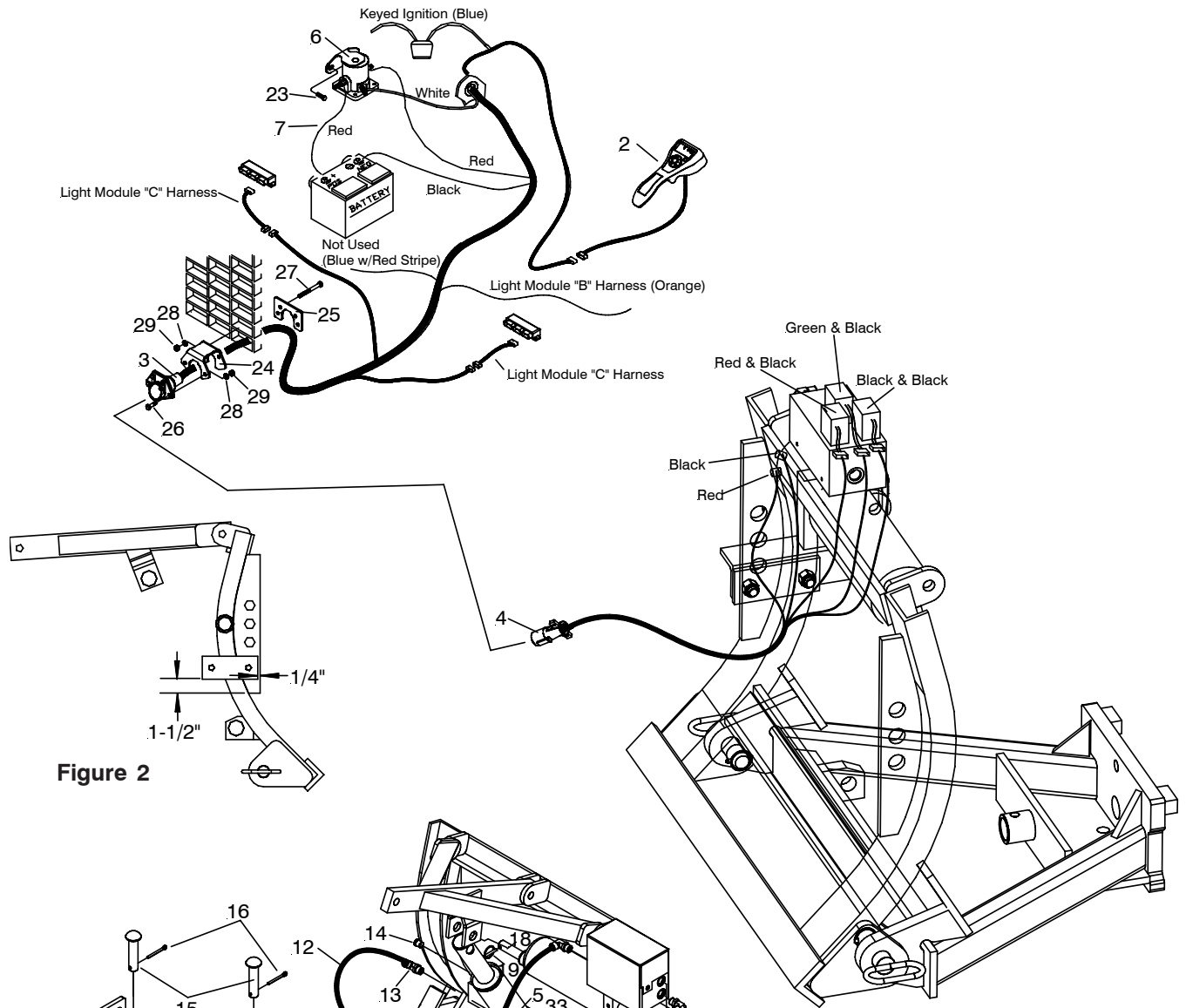


Figure 2

Figure 3

Meyer Products LLC assumes no responsibility for installations not made in accordance with these instructions.

GENERAL INFORMATION

This kit is intended to be used with a vehicle equipped with a E-70 Out Front Hydraulic System.

Note: All Hydraulic cylinders have a maximum operating pressure of 2500 PSI.

Check contents against the parts list to determine all are correct and included, and also to familiarize yourself with them.

SAFETY PRECAUTIONS should be used when **any Hydraulics are in OPERATION** and plow is in a **RAISED** position. **Lower plow to ground when vehicle is PARKED.**

SERVICE INFORMATION is covered on separate instruction.

Follow these instructions explicitly. Warranty does not apply to a Meyer or Diamond product which has been negligently or improperly assembled or installed.

INSTALLATION INSTRUCTIONS

- A. Install Lift Ram (5) to Lift Frame/Lift Arm with the ports facing toward the right hand side (passenger side) using 1" x 3-1/2" Cylinder Pins (18) and Lynch Pins (19).
 - B. Remove shipping plugs from both ports on Lift Ram (5). Install Elbow (13) in the lower port and Relief Valve (14) in the upper port.
 - C. Position Plate (30) as shown in figure 2 and weld into place. Fasten Bracket (31) to Plate (30) with 5/8-11 x 1-3/4" Bolt (32) and 5/8-11 Locknut (33). Bolt E-70 Hydraulic Unit (1) to Plate (30) using 3/8-16 x 1" Bolt (20), 3/8 Flatwasher (21) and 3/8 Lockwasher (22) as shown in figure 3.
 - D. Attach Power Angling Ram Assemblies (8) to Pivot Bar and Push Plate Weld using 1" x 4-1/2" Cylinder Pins (15), and Cotter Pins(16).
- NOTE DIAMOND AGGRESSOR ONLY:** Pins to attach power angling cylinders to moldboard are packed in the 08795 Hardware Bag, part of the 81505 Common Attaching Kit.
- NOTE MEYER AGGRESSOR ONLY:** One 1" Washer (17) should be installed on each side between the bottom of the ram's dead end and the top surface of the lower plate on the Push Plate Weld.
- E. Attach Hose (12) and Elbow (13) from the E-70 (1) that controls the plow raise to the lower port of Lift Ram (5) as shown in figure 3. Attach Hose (34) and Elbow (10) from the E-70 (1) to the Right Angle Ram Assembly (8) and Attach Hose (11) and Elbow (10) from the E-70 (1) to the Left Angle Ram Assembly (8) as shown in figure 3.

WARNING: Lift arm extends beyond bumper of vehicle. To minimize damage from a front-end collision, lift arm should be removed from vehicle when snow plow is removed.

Note: When the Moldboard Assembly is removed from the vehicle, to prevent contamination to Hydraulic system, the hoses and hose receiving ports should be capped.

Power Angling Cylinders are not filled with any hydraulic fluid. It may be necessary to bleed the Power Angling Cylinders, proceed as follows:

- a. Temporarily loosen both hose connections at the Power Angling Cylinder's elbows. Base end of Cylinder must be higher than Rod end to enable trapped air to escape.
- c. Angle the Plow in both directions until fluid leaks out at both points in a steady flow.
- d. Retighten the connections.

WIRING INSTRUCTIONS

- A. Run Universal Truck Side Harness (3) through a hole in grille and into the engine compartment. Sandwich vehicle grill between Plug Bracket (24) and Plate (25) using Bolt H 5/16-18 x 3" (27), 5/16 Lockwasher (28) and 5/16-18 Finish nut (29). Secure Universal Truck Side Harness (3) to Plug Bracket (24) using Bolt H 5/16-18 x 1" (26), 5/16 Lockwasher (28) and 5/16-18 Finish nut (29). **Caution: Secure Universal Truck Side Harness (3) from any hot / moving parts with tie wraps as needed.**
- B. Drill a 1-1/4" Diameter Hole thru firewall to extend the harness into the cab of the vehicle. Fused lead from Universal Truck Side Harness (3) must be attached to terminal in fuse panel that is activated only when the ignition key is "on."
- C. Install Motor Solenoid (6) to metal surface in engine compartment using Self Tapping Screws (23). (Solenoid must be grounded to operate). Attach Red Power Cable (3) to a large terminal on Motor Solenoid (6). Attach Black Ground Cable (3) to negative (-) terminal of battery. Attach Red Power Cable (7) to positive (+) terminal of battery and remaining large terminal on Motor Solenoid (6). Attach small white wire from harness (3) to small terminal on Motor Solenoid (6). Note: Blue wire with Red Stripe is not used.

For snow plow light installation see separate instructions.




Orange wire on Harness (3) will attach to both orange wires of the "B" harness supplied in the 07223 Plow Light kit. Reference Form 1-757

Route Cables "C" (Yellow) from module to Harness (3). Connect both "C" Harness female ends to the male corresponding ends of the Harness (3).

Connect both male ends from the snow plow light to the female ends on the Super-V Plow Side Harness (3).

Check snow plow light blinkers to make sure the wires have not been reversed.

TORQUE CHART FOOT

| Bolt Nut Size | Gr. 2  | Gr. 5  | Gr. 8  |
|---------------|---|---|---|
| 1/4 - 20 | 4 - 5 | | |
| 5/16 - 18 | 9 - 11 | | |
| 3/8 - 16 | 17 - 20 | 26 - 29 | |
| 7/16 - 14 | | 42 - 46 | 60 - 66 |
| 1/2 - 13 | | 64 - 72 | 90 - 100 |
| 5/8 - 11 | | 127 - 141 | 179 - 198 |