

PARTS & INSTALLATION INSTRUCTIONS MEYER SNOW PLOW MOUNTING 1967 THRU 1977 FORD F250, 4x4 TRUCK

IMPORTANT NOTICE

End user must be given this instruction sheet prior to delivery of this Snow Plow.

The equipment you have just purchased should only be used on vehicles equipped with the Manufacturer's Snow Plow Preparation Packages. Snow Plowing without the original Snow Plow Preparation Package may damage your vehicle and the added weight to the equipment may impair the operation and control of the vehicle. Snow Plowing with a vehicle that the manufacturer does not recommend for that purpose may void your new vehicle warranty. If your vehicle is not originally equipped with the Snow Plow Package, additional parts may be necessary before snow plowing. Owners of these vehicles should consult their dealers before purchase or installation of such parts. CAUTION: the installation, on any vehicle, of these parts is not a full substitute for the original equipment Snow Plow Preparation Package.

Warning: Lift Arm extends beyond bumper of vehicle. To minimize damage from a front-end collision, Lift Arm should be removed from vehicle when Snow Plow is removed.

PARTS LIST

Item	Part No.	Qty.	Description	
	17053	1	MOUNTING CARTON	
1	10365	1	• Lift Frame	
2	10143	1	• Underframe L .H .	
3	10144	1	• Underframe R .H .	
4	10145	1	• Clevis Frame	
5	10514	1	• Lift Arm	
	08394	1	• HARDWARE BAG	
6	14193	2	•• Special Bolt	
7	20165	4	•• Bolt H 3/4-10 x 2-1/4	
8	20164	5	•• Bolt H 3/4-10 x 2	
9	20147	2	•• Bolt H 5/8-11 x 3-1/2	
10	20144	1	•• Bolt H 5/8-11 x 2-3/4	
11	20085	2	•• Bolt H 7/16-14 x 5	
12	20073	2	•• Bolt H 7/16-14 x 1-1 /2	
13	20310	11	•• Locknut 3/4-10	
14	20309	3	•• Locknut 5/8-11	
15	20306	6	•• Locknut 7/16-14	
16	20359	3	•• Flat Washer, 3/4	
17	20354	6	•• Flat Washer, 7/16	
	10410	2	•• Pipe Spacer (see Service Bulletin #88)	
11" Sector		15" Sector		Description
Part No.	Qty.	Part No.	Qty.	
16288	1	06249	1	SECTOR & A-FRAME CARTON
12326	1	12793	1	• Sector
13306	1	13319	1	• A-Frame
07017	3	07017	4	• Trip Spring
09916	1	09916	1	• Marker Kit
08166	1	08341	1	• PLOW HARDWARE BAG
09119	2	09119	2	•• Pivot Pin w/Cotter Pin
11101	2	11101	2	•• Hinge Pin
21984	2	21984	2	•• Hair Pin Cotter
09122	1	09125	1	•• King Bolt w/Locknut
09124	3	09124	4	•• Eye Bolt w/Locknuts

Parts indented are included in the carton, bag or assembly under which they are indented.

Meyer Products reserves the right, under its continuing product improvement program, to change construction or design details, specifications and prices without notice or without incurring any obligation.

GENERAL INFORMATION

CAUTION: Always disconnect battery before beginning installation.

DO NOT BURN holes or **WELD** vehicle frame. This may cause frame failure.

After first use, retighten all mounting bolt connections to specified torque. All mounting bolt connections to be checked periodically for tightness.

Locknuts are furnished **DO NOT** tighten bolts and nuts until installation is complete (unless otherwise specified), then be sure to tighten all attaching parts per specified torque chart.

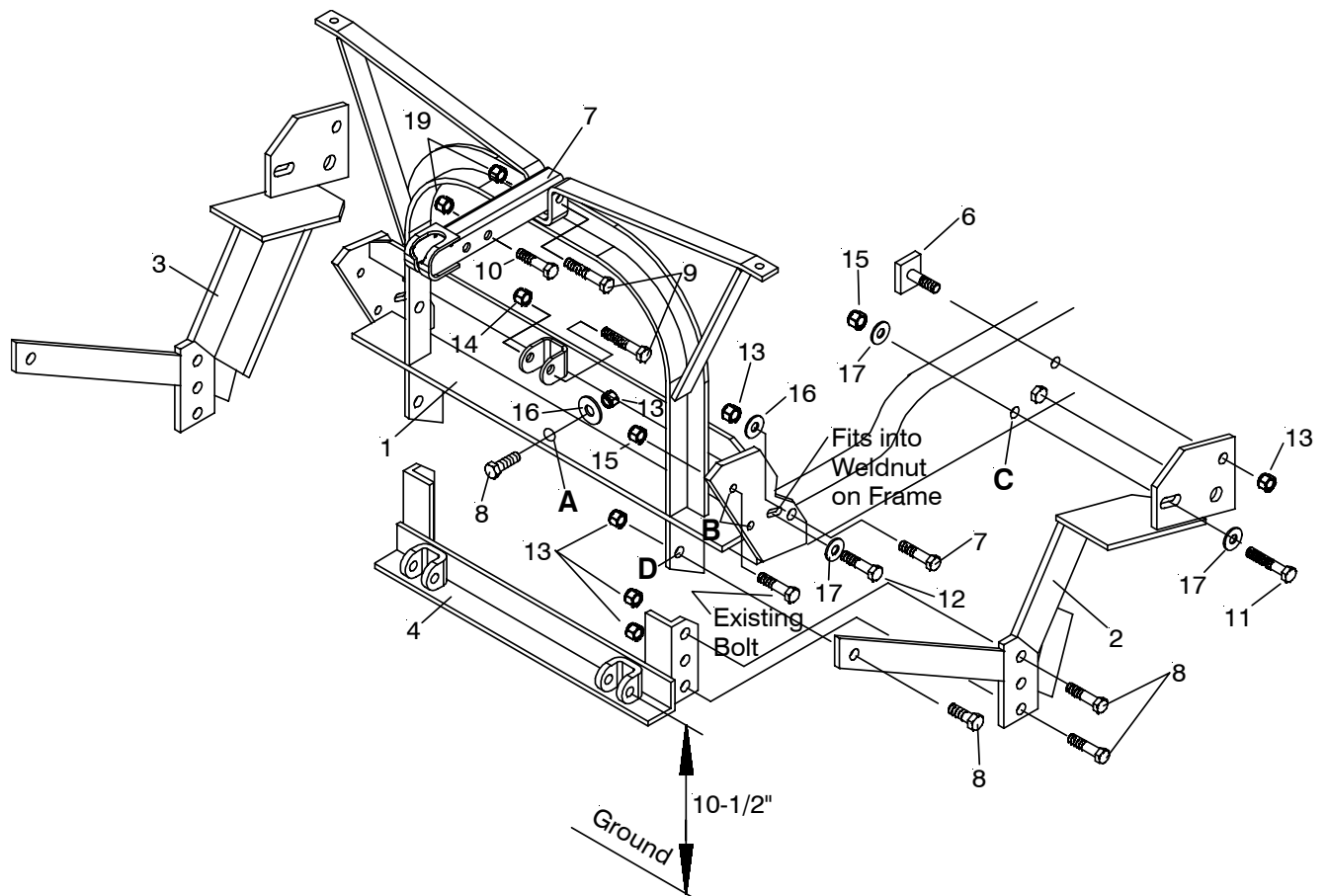
NOTE: It is important that the Meyer harness, all wires from the Meyer light switch, and all other electrical wires be routed around hot or moving engine parts, and any sharp metal. Protection must be provided to guard against wire damage at these points. All excess or loose wires must be neatly secured using wire ties.

Check contents against the parts list to determine all are correct and included, and also to familiarize yourself with them.

SAFETY PRECAUTIONS should be used when **Hydraulic Unit is in OPERATION** and plow is in a **RAISED** position. **Lower plow to ground when vehicle is PARKED.**

OVERHAUL and **SERVICE INFORMATION** are covered on separate instructions.




Follow these instructions explicitly. Warranty does not apply to a Meyer product which has been negligently or improperly assembled or installed.



INSTALLATION INSTRUCTIONS

- A. Remove front bumper and bumper brackets retaining original parts and fasteners.
 - B. Install Lift Frame (1) to front of vehicle frame and secure at hole "A" with a 3/4 x 2 bolt (8), flat washer (16) and locknut (13). Bolt Lift Frame (1) to vehicle frame with 3/4 x 2 bolts (8), flat washers (16) and locknuts (13) and 7/16 x 1-1/2 bolts (12) flat washers (17) to weldments in frame.
- NOTE:** On 6 cylinder models, remove existing bolts from vehicle frame and engine mount at holes "C".
- C. Position Side Members (2 & 3) to vehicle frame and secure to Lift Frame (1) at holes "D" with 3/4 x 2 bolts (8) and locknuts (13). Insert Special Bolts (6) from inside vehicle frame and secure with locknuts (13). Install 7/16 x 5 bolts (11) flatwashers (17) and locknuts (15) as shown.
 - D. Bolt Clevis Frame (4) between Side Members (2 & 3) using the combination of holes to obtain a dimension of 10-1/2 as shown. Clevis Frame (4) to be parallel to the ground. Secure with 3/4 x 2-1/4 bolts (7) and locknuts (13).
 - E. Attach Lift Arm (5) to Lift Frame (1) with 5/8 x 3-1/2 bolt (9) and locknut (14).
 - F. Reinstall the bumper assembly by first bolting the bumper brackets to the Lift Frame (1) at holes "B" using original bolts and provided locknuts (15). Fasten the bumper to the brackets using the original fasteners.
 - G. Pre-assemble Moldboard Assembly, A-Frame (18), Sector, etc. per separate instructions.
 - H. Connect the A-Frame (18) to the Clevis Frame (4) using Hinge Pins (19) and Spring Clips (20).
 - I. Hook the A-Frame chain to the Lift Arm (5) allowing sufficient slack to enable the Moldboard to follow ground contour while plowing.

TORQUE CHART FOOT LBS.

Bolt Nut Size	Gr. 2 	Gr. 5 	Gr. 8 
1/4 - 20	4 - 5		
5/16 - 18	9 - 11		
3/8 - 16	17 - 20	26 - 29	
7/16 - 14		42 - 46	60 - 66
1/2 - 13		64 - 72	90 - 100
5/8 - 11		127 - 141	179 - 198
3/4 - 10		227 - 251	

Meyer Products assumes no responsibility for installations not made in accordance with these instructions.