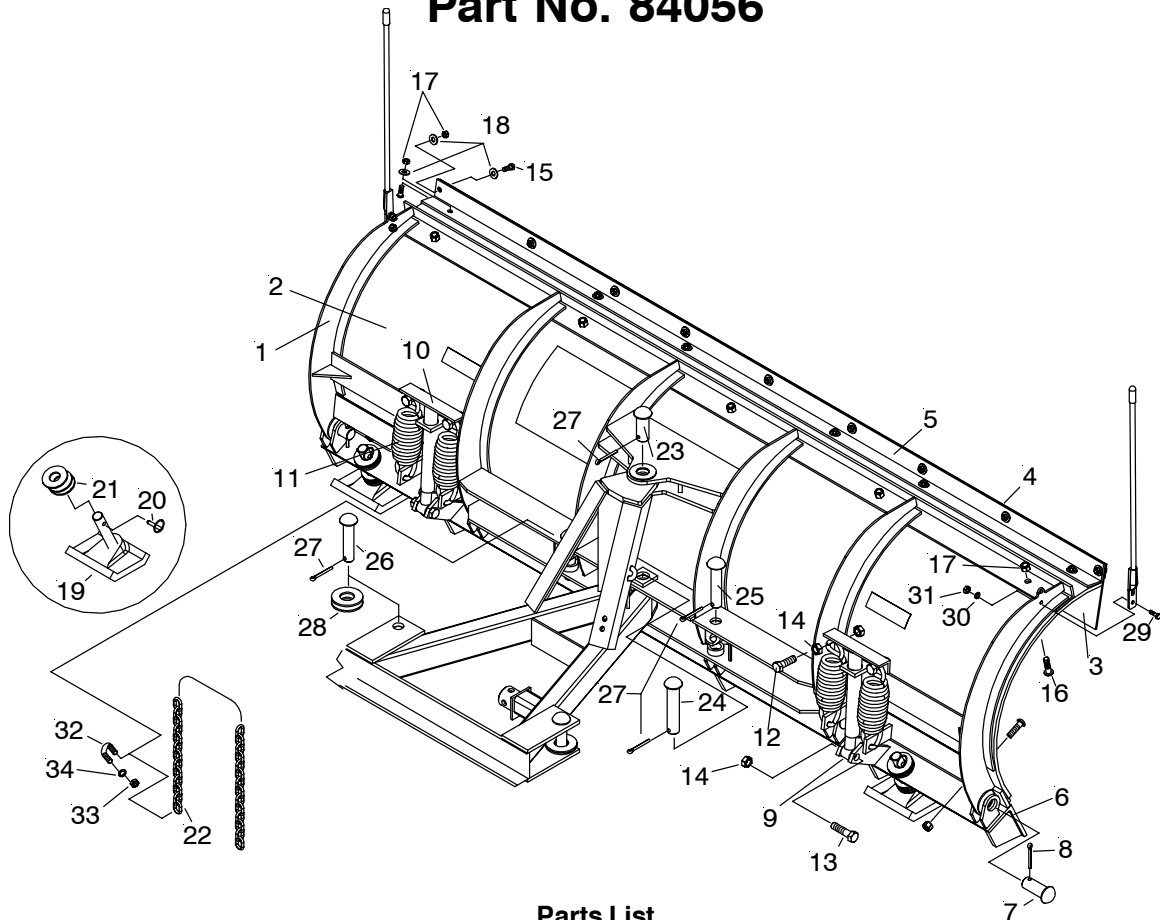


7.5' Poly Blade Assembly Part No. 84056



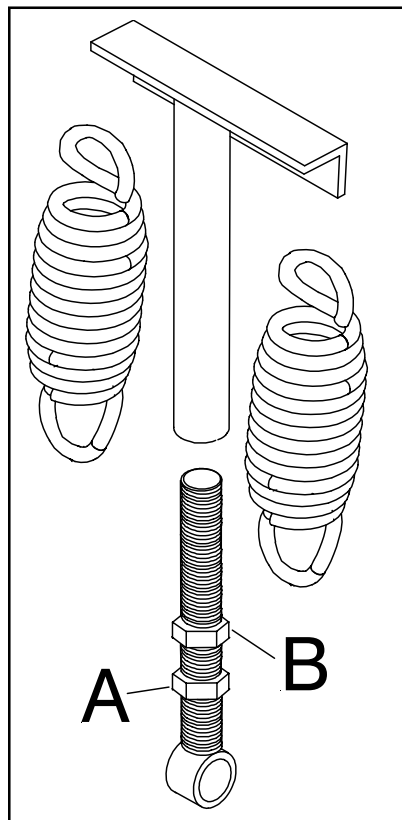
Parts List

Item	Part No.	Qty	Description	Item	Part No.	Qty	Description
	84066	1	Moldboard Frame	21	20361	20	Flatwasher 1"
2	811000272	1	Plastic Sheet		811000180	1	Warning Decal
3	811000273	1	Snow Deflector		22190	10	Button HD 1/2-13 x 1-3/4"
4	12487	1	Bar Reinforcement		20307	10	Locknut Esna 1/2-13
5	12491	1	Angle Support		81504	1	Common Attaching Kit
	811000274	1	Decal		817000104	2	• Cylinder Collar
6	84078	1	Trip Edge	22	8511002008059	1	• Chain 5/16" PR Coil Lift 59"
7	81100003003	6	Pin 1-3/16 x 2-13/16"		811000095	2	• Plow Marker
8	20420	6	Cotter Pin 1/4 x 2"		80389	1	• Hardware Bag
9	811000254	2	Spring Adjuster Assy.	23	81100003003	1	• Upper Pivot Pin
	84017	2	Spring Adj. Decal	24	81100003009	1	• Blade Pivot Pin
10	811000251	2	Spring Bar Assy.	25	819000001002	2	• Cylinder Pin
11	12978	4	Trip Spring	26	819000001004	2	• Cylinder Pin
12	20141	4	Bolt H 5/8-11 x 2" Gr.5	27	20420	6	• Cotter Pin 1/4" x 2"
13	20143	2	Bolt H 5/8-11 x 2-1/2" Gr. 5	28	20363	4	• Flatwasher 1-1/4"
14	20318	10	Nut Eslok 5/8-11	29	8500003035	4	• Bolt H 5/16-18 x 1"
15	22193	9	Bolt H 3/8-16 x 1" Gr. 2	30	20326	4	• Lockwasher 5/16"
16	22191	6	Button HD 3/8-16 x 1"	31	8501001003	4	• Nut 5/16-18
17	20314	15	Nut Eslok 3/8-16	32	8518001026	2	• U-Bolt 7/16-14
18	20353	24	Flatwasher 3/8"	33	8501001007	4	• Nut 7/16-14
19	84040	2	Wear Shoe	34	20328	4	• Lockwasher 7/16"
20	811000224	2	Lynch Pin 5/16"				

Parts indented are included in the assembly under which they are indented.

CAUTION: CHECK THE TRIPEDGE ADJUSTMENT AT THIS TIME.

- A. THE SPRINGS ARE PROPERLY ADJUSTED WHEN A PIECE OF PAPER CAN BE PLACED BETWEEN EACH COIL.
- B. IF THE TRIPEDGE SPRINGS NEED ADJUSTMENT, LOOSEN THE BOTTOM LOCK NUT (A) ON BOTH SPRING ASSEMBLIES. ROTATE THE TOP NUT (B) UNTIL THE SPRINGS ARE PROPERLY ADJUSTED.
- C. BE SURE TO TIGHTEN THE BOTTOM LOCK NUT SECURELY ON BOTH ASSEMBLIES TO THE TOP NUT TO PREVENT LOOSENING OF THE ASSEMBLIES.



Spring Assembly