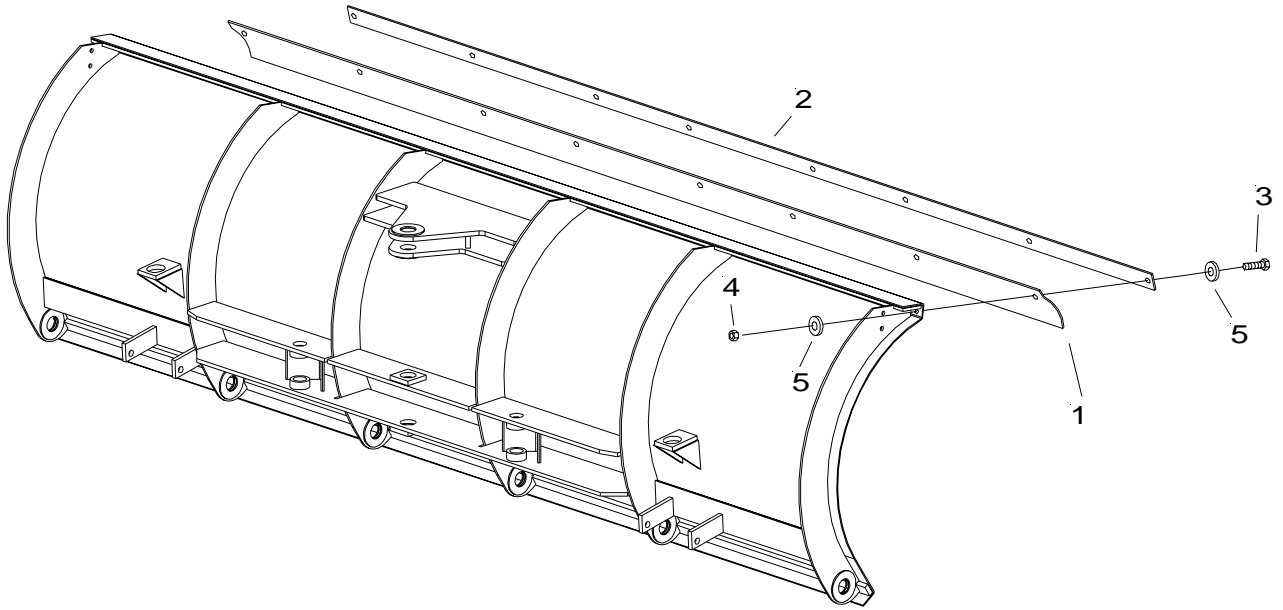




SNOWPLOWS
by Meyer

**STEEL TRIPEDGE MOLDBOARDS
7.5', 8.0', 8.5' & 9.0'
SNOW DEFLECTORS**



Parts list

Item	Qty.	7.5	8.0	8.5	9.0	Description
1	1	80351	80353	80355	80348	Carton (Deflector)
		80352	80354	80356	80349	Deflector w/Decal
		80350	80350	80350	80350	•• Decal
2	1	12487	12497	12498	12031	Bar
3	10	08614	08615	08615	08615	Hardware Bag
		20050	20050	20050	20050	•• Bolt 3/8-16 x 1-1/4 Gr.2
		20314	20314	20314	20314	•• Locknut 3/8-16
		20353	20353	20353	20353	•• Flatwasher

Part No. indented are included in the carton, bag or assembly under which they are indented

Position (clamp) Reinforcing Bar (2) onto top of moldboard with Deflector (1) sandwiched between bar and top of moldboard. Using bar as template, drill (10) 13/32" holes, ((9) holes for 7.5' Deflector), through Deflector and moldboard. Attach the bar and the snow deflector using 3/8-16x1-1/4 Bolts (3), 3/8-16 locknuts (4), and 3/8 flatwashers (5).

When ordering parts, furnish Part No., Name and Description. Also furnish Vehicle Model and Year. Type of Hydraulic Unit and Blade Size.

Diamond Equipment reserves the right, under its continuing product improvement program, to change construction or design detail specifications and prices without notice incurring any obligation.



SNOWPLOWS
by Meyer