

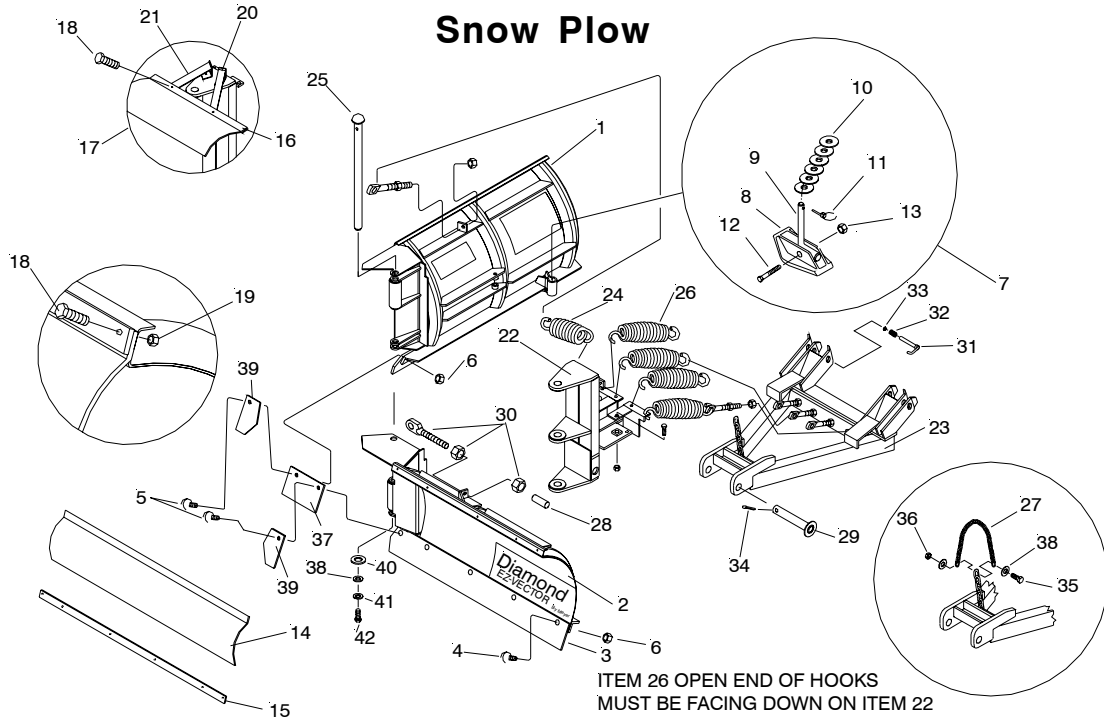


**SNOWPLOWS**  
by Meyer

# Parts & Installation Instructions

## Model "Vector" 8.5

### Snow Plow



#### PARTS LIST

Item	8.5	Qty.	Description	Item	8.5	Qty.	Description
1	09258	2	<b>Moldboard R.H. &amp; L.H. Wing</b> • R.H. Wing • L.H. Wing	25	07069	1	• Hinge Pin
	09254	1		26	07216	2	• Trip Springs
	09255	1			09916	1	• Plow Marker Kit
3	09259	1	• Cutting Edge (2 sections)	27	85110020080 40	1	• Lift Chain
	08692	1			812000040	1	• Lift Arm
4	21961	8	• <b>HARDWARE BAG</b> • Bolt C 1/2-13 x 2 Gr. 5	28	80324	1	• <b>HARDWARE BAG</b> • Cap (Eye Bolt)
	22066	2			07031	6	
5	22066	2	• Bolt C 1/2-13 x 2-3/4 Gr. 5	29	12396	1	• Pivot Pin
	20307	10			09124	6	• Eye Bolt Assembly
6	20307	10	• Locknut 1/2-13	30	814000015	2	• Pin (Hook-up)
	09126	2			814000005	2	• Spring (Hook-up)
7	09126	2	• <b>Runner &amp; Spindle Assembly</b> • Runner • Spindle	31	8509002027	2	• Snap Ring 1"
	07006	1			20421	1	• 1/4" x 2-1/4" Cotter Pin
8	12057	1	• Flat Washer 1-1/4"	32	20073	1	• 7/16-14 x 1-1/2" capscrew
	20363	10			20306	1	• 7/16-14 Locknut
9	22083	1	• Linch Pin	33	12198	1	• Center Piece (Rubber)
	20102	1			07996	1	• Cable Tie
10	20307	1	• Locknut 1/2-13	34	20354	3	• 7/16 Washer
	12170	1			12381	2	• Center Plate
11	12190	2	• Deflector	35	20357	1	• 5/8 Flatwasher
	12191	2			20328	1	• 7/16 Lockwasher
12	12277	1	• Reinforcement Bar	36	20072	1	• 7/16-14 x 1-1/4" Bolt H Gr. 5
	12285	1					
13	12285	1	• Center Deflector & Decal	37	<b>Reference form 81500</b>		
	08691	1					
14	12190	2	• Snow Deflector KIT (OPTIONAL) • Deflector	38	11006	2	• Hinge Pin
	12191	2			21984	2	• Hair Pin Cotter
15	12277	1	• Bar	39	8500003307 001	2	• 5/8-11 x 3" bolt (full thread)
	12285	1			8500003377	1	• 5/8-11 x 5-1/2" capscrew
16	12275	1	• Hardware Bag	40	8501003013	4	• 5/8-11 Jam Nut
	12276	2			20309	1	• 5/8-11 Locknut
17	12275	1	• Bolt H 1/4-20 x 1-1/4"	41			
	12276	2			20309	1	
18	20006	18	• Nut, Eslok 1/4-20	42			
	20312	18					
19	12275	2	• Angle				
	12276	2					
20	12276	2	• Deflector Extension				
	81503	1					
21	81503	1	• Common Attachment Kit				
	13625	1					
22	13625	1	• Pivot Assembly				
	81102	1					
23	81102	1	• Push Frame				
	07178	4					
24	07178	4	• Trip Springs				

Parts indented are included in the carton, bag or assembly under which they are indented. When ordering parts, furnish Part No., Name, and Description. Also furnish Vehicle Model and Year. Type of Hydraulic Unit and Blade Size.

Diamond Equipment reserves the right, under its continuing product improvement program, to change construction or design details, specifications and prices without notice or without incurring any obligation.



# INSTALLATION INSTRUCTIONS

**Note:** The following instructions cover assembly of Moldboard Wings, Pivot Assembly and A-Frame. Refer to separate instructions for installation of plow mounting and hydraulic system.

- A. Assemble Pivot Assembly (22) to Push Frame (23) using Pivot Pin (29) and Cotter Pin (34). **Note: Liberally coat Pivot Pin with a chassis grease/anti-seize lubricant.**
  - B. Assemble Eye Bolts W/Locknut (30) to Trip Springs (24). Install four Trip Springs (24) onto Pivot Assembly (22).
  - C. Guide Eyebolts into Push Frame (23) Attach Eye Bolts (30) to Push Frame (23),
  - D. Make certain each Eye Bolt (30) is in a vertical position as shown in figure 1 so that the Eye Bolt (30) and Trip Springs hinge properly when moldboard trips.
- Note:** Proper tension is attained when Trip Spring coils just begin to separate and then tightening top locknut four additional turns.
- E. **IMPORTANT : PIVOT ASSEMBLY MUST BE TIGHT AGAINST A-FRAME STOP.**
  - F. Assemble L.H. & R.H. Wings (1 & 2) to Pivot Assembly using Hinge Pin (25), 5/8 Flatwasher (40), 7/16 Washer (38), 7/16 Lockwasher (41) and 7/16-14 x 1-1/4" Bolt (42).
  - G. Install Power Angling Rams per separate instructions.
  - H. Install Wing return Springs (26) using Eyebolts (30) and adjust springs to proper tension.

## Snow Deflector Installation

Position reinforcement bar (15) to top edge of moldboard wing. Using the reinforcement bar (15) as a template drill 13/32" diameter holes through flange on moldboard. Position snow deflector (14) on moldboard and using the drilled holes, drill corresponding 13/32" diameter holes through snow deflector. Attach reinforcement bar and snow deflector to moldboard using 3/8 x 1-1/4" bolts (18), and locknuts (19). Position Bar (16) over center snow deflector (17), using bar as a template drill 13/32" diameter holes through snow deflector. Mount angles (20) to pivot assembly (22) using 3/8 x 1-1/4" bolts (18), and locknuts (19). Assemble deflector extensions (21) to mounting angles using 3/8 x 1-1/4" bolts (18), and locknuts (19). Assemble center snow deflector and bar to extensions using 3/8 x 1-1/4" bolts (18), and locknuts (19).

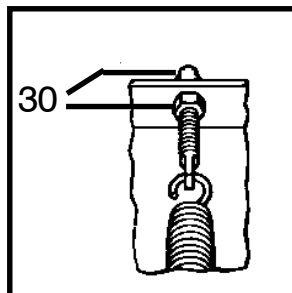


Figure 1

