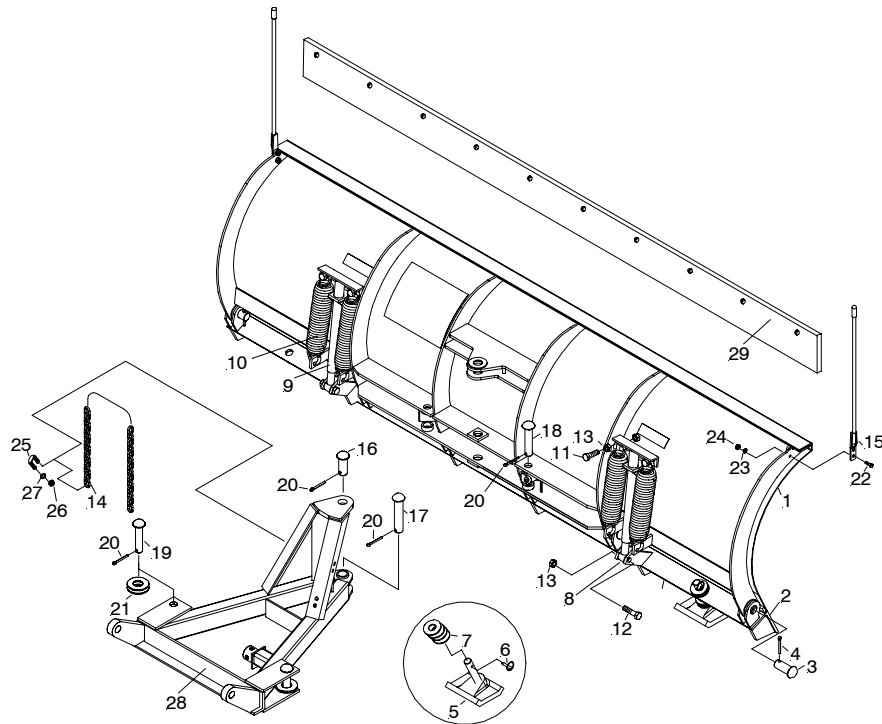




SNOWPLOWS
by Meyer

MDII™ Blade Assembly

6.0', 6.5', 7.0', 7.5', 8.0', 8.5' & 9.0'



Parts List

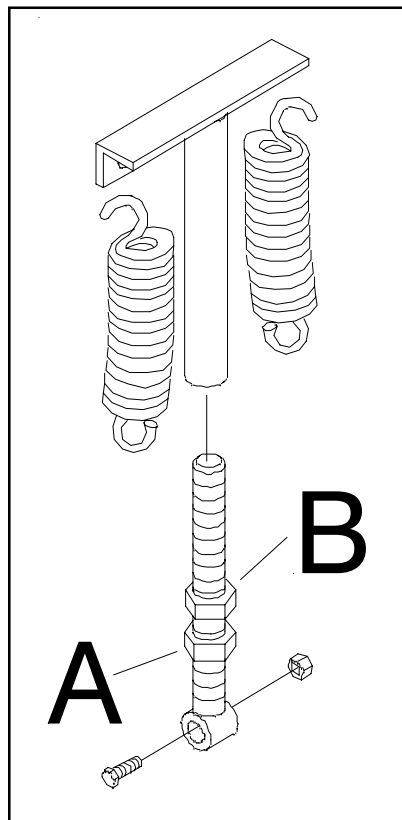
Item	84059 (6.0) Part No.	84057 (6.5) Part No.	84058 (7.0) Part No.	84050 (7.5) Part No.	84051 (8.0) Part No.	84052 (8.5) Part No.	84053 (9.0) Part No.	Qty.	Description
1	84069	84067	84068	84060	84061	84062	84063	1	Moldboard Weld
2	84077	84075	84076	84070	84071	84072	84073	1	• Trip Edge
3	81100003003	81100003003	81100003003	81100003003	81100003003	81100003003	81100003003	6	• Pin 1-3/16 x 2-13/16"
4	20420	20420	20420	20420	20420	20420	20420	6	• Cotter Pin 1/4 x 2"
5	84040	84040	84040	84040	84040	84040	84040	2	• Wear Shoe Assy.
6	811000224	811000224	811000224	811000224	811000224	811000224	811000224	2	• Lynch Pin 5/16"
7	20361	20361	20361	20361	20361	20361	20361	20	• Washer 1"
8	811000254	811000254	811000254	811000254	81000254	811000254	811000254	2	• Spring Adjuster Assy.
9	811000251	811000251	811000251	811000251	811000252	811000252	811000252	2	• Spring Bar Assy.
10	12978	12978	12978	12978	07017	07017	07017	4	• Trip Spring
11	20141	20141	20141	20141	20141	20141	20141	4	• Bolt H 5/8-11 x 2" Gr.5
12	20143	20143	20143	20143	20143	20143	20143	2	• Bolt H 5/8-11 x 2-1/2" Gr. 5
13	20318	20318	20318	20318	20318	20318	20318	10	• Nut Eslok 5/8-11
14	81504	81504	81504	81504	81504	81504	81504	1	Common Attaching Kit
15	8511002008059 811000095	8511002008059 811000095	8511002008059 811000095	8511002008059 811000095	8511002008059 811000095	8511002008059 811000095	8511002008059 811000095	1 2	• Chain 5/16" PR Coil 59" • Plow Marker
16	80389	80389	80389	80389	80389	80389	80389	1	• Hardware Bag
17	81100003003	81100003003	81100003003	81100003003	81100003003	81100003003	81100003003	1	• Upper Pivot Pin
18	81100003009	81100003009	81100003009	81100003009	81100003009	81100003009	81100003009	1	• Pivot Pin 1-3/16" x 5-3/8"
19	81900001002	81900001002	81900001002	81900001002	81900001002	81900001002	81900001002	2	• Cylinder Pin
20	81900001004	81900001004	81900001004	81900001004	81900001004	81900001004	81900001004	2	• Cylinder Pin 1" x 4-34"
21	20420	20420	20420	20420	20420	20420	20420	6	• Cotter Pin 1/4" x 2"
22	20363	20363	20363	20363	20363	20363	20363	4	• Flatwasher 1-1/4"
23	8500003035	8500003035	8500003035	8500003035	8500003035	8500003035	8500003035	4	• Bolt H 5/16-18 x 1"
24	8507001010	8507001010	8507001010	8507001010	8507001010	8507001010	8507001010	4	• Lockwasher 5/16"
25	8501001003	8501001003	8501001003	8501001003	8501001003	8501001003	8501001003	4	• Nut 5/16-18
26	8518001026	8518001026	8518001026	8518001026	8518001026	8518001026	8518001026	2	• U-Bolt 7/16-14
27	8501001007	8501001007	8501001007	8501001007	8501001007	8501001007	8501001007	4	• Nut 7/16-14
28	8507001012	8507001012	8507001012	8507001012	8507001012	8507001012	8507001012	4	• Lockwasher 7/16"
29	817000104	817000104	817000104	817000104	817000104	817000104	817000104	2	Cylinder Collar (Optional)
28	81026	81026	81026	81026	81026	81026	81026	1	Push Frame
29	8CE6.0	8CE6.5	8CE7.0	8CE7.5	8CE8.0	8CE8.5	8CE9.0	1	Cutting Edge (Optional)
	8CE/BB	8CE/BB	8CE/BB	8CE/BB	8CE/BB	8CE/BB	8CE/BB	1	Cutting Edge Bolt Bag

Parts indented are included in the assembly under which they are indented.

Diamond Equipment reserves the right, under its continuing product improvement program, to change construction or design details, specifications and prices without notice or without incurring any obligation.

CAUTION: CHECK THE TRIPEDGE ADJUSTMENT AT THIS TIME.

- A. THE SPRINGS ARE PROPERLY ADJUSTED WHEN A PIECE OF PAPER CAN BE PLACED BETWEEN EACH COIL.
- B. IF THE TRIPEDGE SPRINGS NEED ADJUSTMENT, LOOSEN THE BOTTOM LOCK NUT (A) ON BOTH SPRING ASSEMBLIES. ROTATE THE TOP NUT (B) UNTIL THE SPRINGS ARE PROPERLY ADJUSTED.
- C. BE SURE TO TIGHTEN THE BOTTOM LOCK NUT SECURELY ON BOTH ASSEMBLIES TO THE TOP NUT TO PREVENT LOOSENING OF THE ASSEMBLIES.



Spring Assembly