

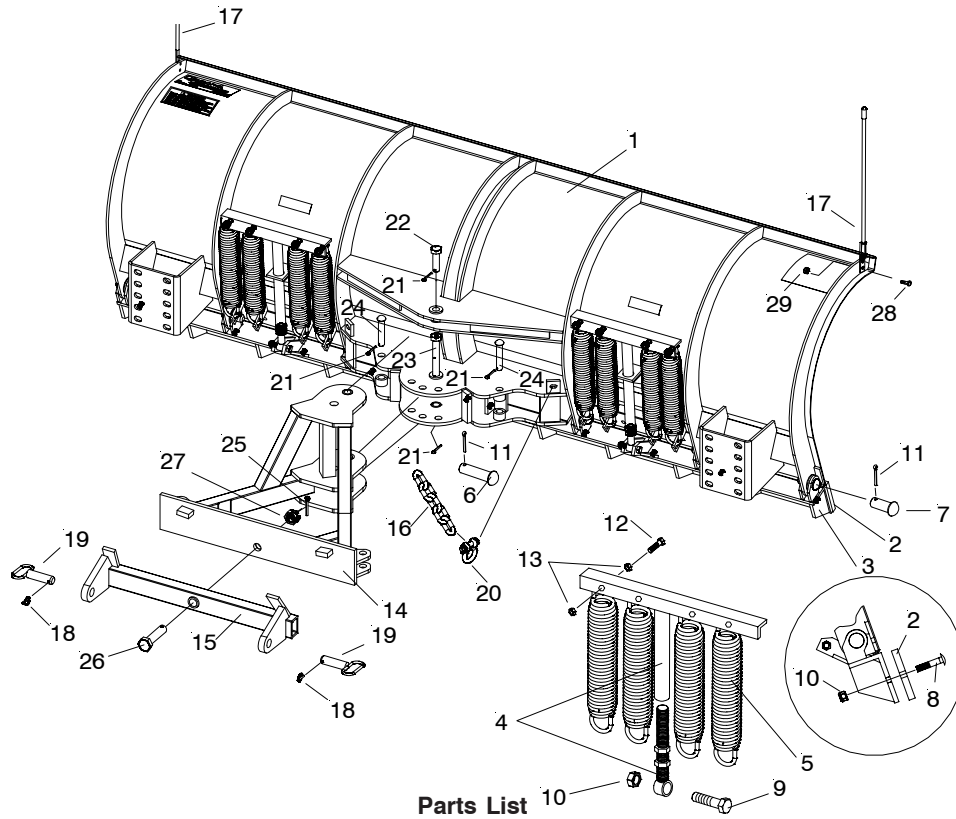


**SNOWPLOWS**  
by Meyer

# Parts & Installation Instructions

## Diamond Steel Aggressor Moldboards

### Model DAGC-1036



**Parts List**

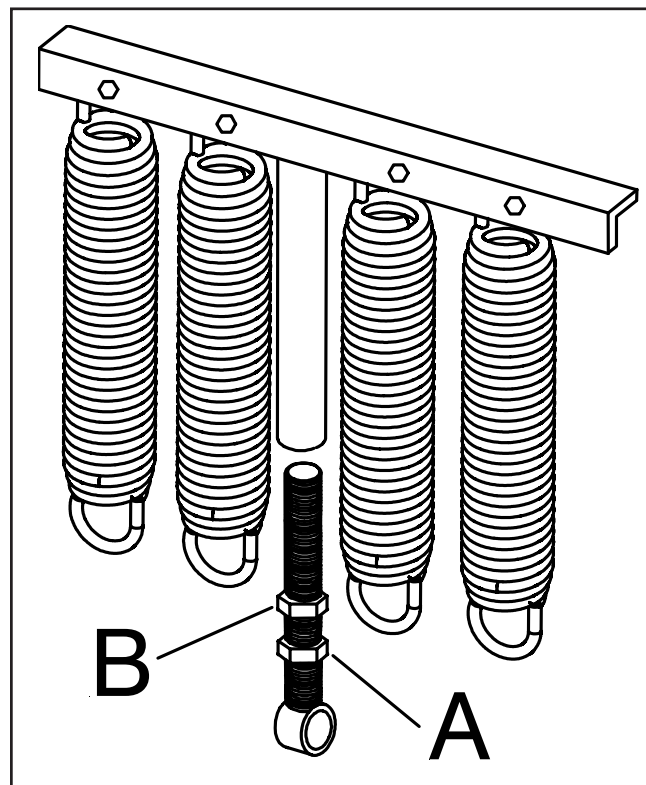
Item	Part No.	Qty.	Description
1	84200		<b>Moldboard Assembly</b>
2	84152	2	• Cutting Edge
3	84074	2	• Trip Edge Weldment
4	84137	2	• T-Bar Assembly
5	07238	8	• Trip Spring
6	811000003009	1	• Pin 1-3/16" Dia.
7	811000003003	6	• Pin 1-3/16" Dia.
8	21960	10	• Bolt C 5/8-11 x 2-1/4" Gr. 8
9	20146	2	• Bolt 5/8-11 x 3-1/4" Gr. 5
10	20309	12	• Locknut 5/8-11
11	20420	7	• Cotter Pin 1/4 x 2"
12	20141	8	• Bolt H 5/8-11 x 2" Gr. 5
13	20318	16	• Locknut 5/8-11
14	81027	1	<b>DAG Push Frame Front</b>
	81505		<b>DAG Common Attaching Kit</b>
15	81028	1	• DAG Push Frame Rear
16	22289	1	• 3/8 x 64" Lift Chain Gr. 70
17	811000095	2	• Plow Marker
	08795	1	• <b>Hardware Bag</b>
18	22083	2	•• Lynch Pin
19	19005	2	•• Pin - Yellow Handle
20	22278	2	•• Anchor Shackle w/Safety Pin
21	20420	4	•• Cotter Pin 1/4 x 2"
22	22331	1	•• Pivot Bolt 1 x 3-5/16"
23	22333	1	•• Pivot Bolt 1 x 6-5/8" w/Grease Fttg.
24	22334	2	•• Pin 1 x 6-1/16"
25	20435	1	•• Cotter Pin 5/16 x 2-1/2"
26	22329	1	•• 1-1/4 - 7 x 5" Pivot Bolt Push Frame
27	22330	1	•• 1-1/4 - 7 Slotted Hex nut
28	20027	4	•• Bolt H 5/16-18 x 1 Gr. 2
29	20304	4	•• Locknut 5/16-18

Parts indented are included in the assembly under which they are indented.

Diamond Equipment reserves the right, under its continuing product improvement program, to change construction or design details, specifications and prices without notice or without incurring any obligation.

**CAUTION: CHECK THE TRIPEDGE ADJUSTMENT AT THIS TIME.**

- A. THE SPRINGS ARE PROPERLY ADJUSTED WHEN A PIECE OF PAPER CAN BE PLACED BETWEEN EACH COIL.
- B. IF THE TRIPEDGE SPRINGS NEED ADJUSTMENT, LOOSEN THE BOTTOM LOCK NUT (A) ON BOTH SPRING ASSEMBLIES. ROTATE THE TOP NUT (B) UNTIL THE SPRINGS ARE PROPERLY ADJUSTED.
- C. BE SURE TO TIGHTEN THE BOTTOM LOCK NUT SECURELY ON BOTH ASSEMBLIES TO THE TOP NUT TO PREVENT LOOSENING OF THE ASSEMBLIES.



**Spring Assembly**

