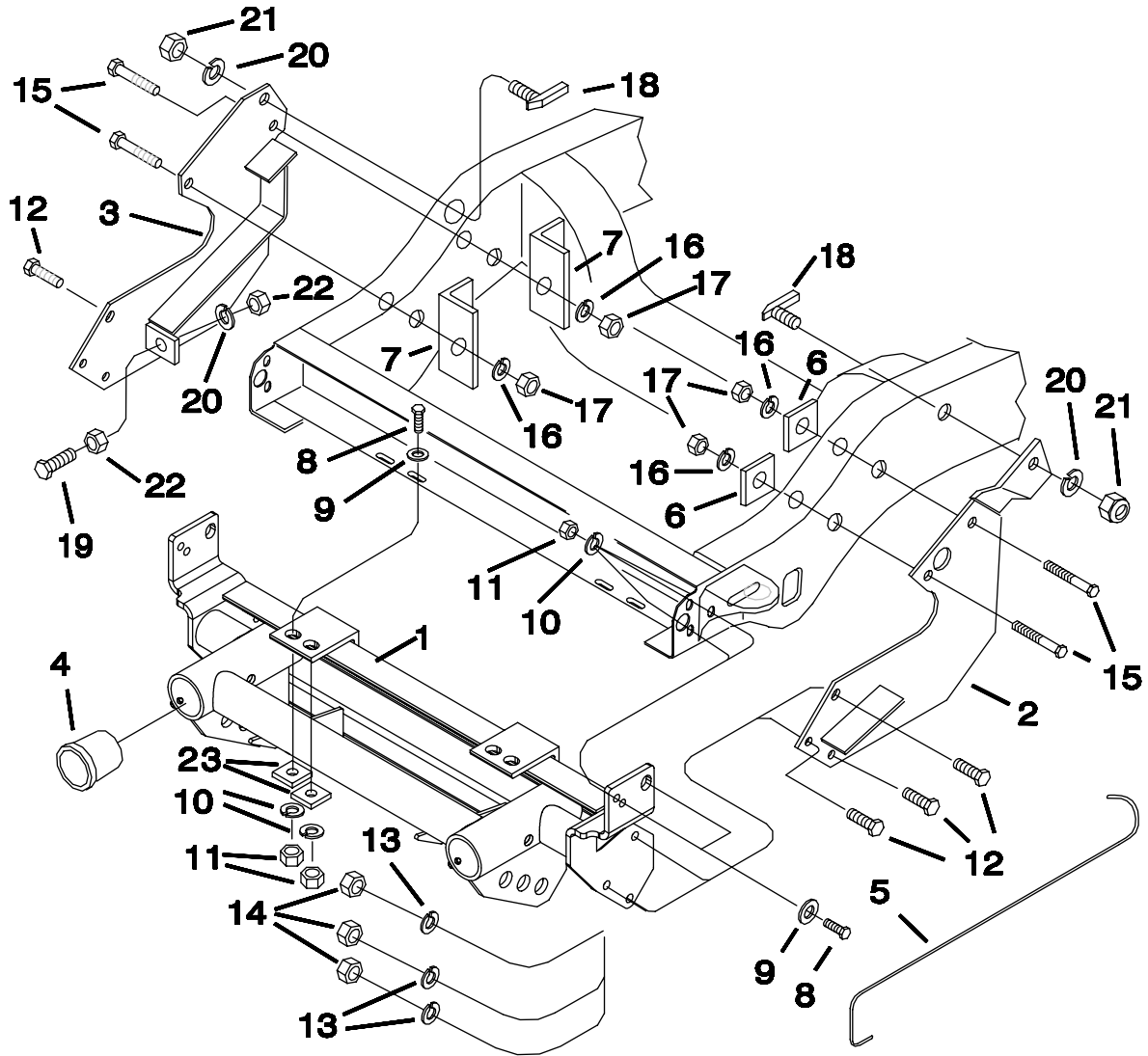




SNOWPLOWS
by Meyer

FRAME ATTACHMENT KIT
1994 - Dodge 1500, 2500, 3500 4x4
W / PREPARATION PACKAGE (AHD)



Parts List

ITEM	PART NO.	DESCRIPTION	QTY.	ITEM	PART NO.	DESCRIPTION	QTY.
	81015	Frame Attachment Kit		12	20095	•• 1/2"-13 X 1-1/2" CAPSCREW	6
1	80180	• MOUNTING FRAME	1	13	20329	•• 1/2" LOCKWASHER	6
2	80187	• PUSH ARM (D.S.)	1	14	8501001 009	•• 1/2"-13 NUT	6
3	80188	• PUSH ARM (P.S.)	1	15	20150	•• 5/8-11 X 4-1/2" CAPSCREW	4
4	815000 146	• REC. TUBE END CAP	2	16	20331	•• 5/8" LOCKWASHER	4
5	819000 013	• RELEASE HOOK	1	17	20530	•• 5/8"-11 NUT	4
	80433	• HARDWARE BAG	1	18	14595	•• 3/4"-10 X 1-3/4" "L" HEAD CAP	2
6	11689	•• SPACER	2	19	20164	•• 3/4"-10 X 2" CAPSCREW	2
7	815000 065 008	•• BOLTING ANGLE	2	20	20333	•• 3/4" LOCKWASHER	4
8	20073	•• 7/16-14 x 1-1/2" CAP SCREW	8	21	8501001 015	•• 3/4"-10 NUT	2
9	20354	•• 7/16" FLATWASHER	12	22	8501003 015	•• 3/4"-10 JAM NUT	4
10	20328	•• 7/16" LOCKWASHER	8	23	11139	•• WASHER PLATE 7/16"	4
11	8501001 007	•• 7/16"-14 NUT	8				

Parts indented are included in the carton, bag or assembly under which they are indented.

Meyer Products and Diamond Equipment reserves the right, under its continuing product improvement program, to change construction or design details, specifications and prices without notice or without incurring any obligation.



Diamond Equipment
Old Route 1 RR #1 • Damariscotta, ME 04543-9720
Phone 563-2227 (Area Code 207)
www.diamondplow.com • email info@diamondplow.com

PARTICULAR ATTACHMENTS INSTRUCTIONS FOR 81015 PULL AWAY MOUNTINGS

IMPORTANT NOTICE

This snow removal equipment should be mounted only on vehicles that are equipped with the vehicle 'manufacturer optional snow plow preparation package. Mounting snow removal equipment on a vehicle that the vehicle manufacturer does not recommend for snowplowing could damage the vehicle, impair operation and control of the vehicle, and/or may void the new vehicle warranty. Snow Plow Preparation Package information is available from vehicle manufacturers and new vehicle dealers.

GENERAL INSTRUCTIONS

Disconnect the vehicle battery or batteries before beginning installation (**reconnect after installation is complete**). Do not burn holes into or weld pieces onto the vehicle frame. Use extreme caution when drilling any holes in the vehicle to prevent damage to brake lines, fuel lines, wiring, or any other vehicle components. Assemble parts and fasteners "finger tight" until instructions indicate final tightening. After first usage and periodically thereafter, retighten all fasteners to correct torque.

NOTE: 7/16"-14 GRADE 5 fasteners should be torqued to 50 ft. lbs.
1/2"-13 GRADE 5 fasteners should be torqued to 75 ft. lbs.
5/8"-11 GRADE 5 fasteners should be torqued to 150 ft. lbs.
3/4"-10 GRADE 5 fasteners should be torqued to 250 ft. lbs.

1. PRELIMINARY: Jack the vehicle up from under the center of the frame until the tires just clear the ground. Place jack stands under the frame to prevent accidental lowering of the vehicle. If the vehicle has a air dam, either remove it or cut approximately 38" out of the center of it. Remove and discard the two front nuts and bolt bar holding each front bumper bracket to the frame rails. Loosen the remaining bumper bracket bolt and nut on each side.

On the driver's side frame rail, using a 11/16" dia. drill, ream out and drill through the back side of the boxed rail using the two holes on either side of the rear steering box bolt as guides. Using a 1" dia. drill, ream out the upper large rear hole in the outer surface of the frame rail. Install a 3/4"-10 X 1-3/4" "L" head capscrew (18) into the reamed out hole.

On the passenger's side frame rail, using a 11/16" dia. drill, ream out and drill through the back side of the boxed rail using the two lower small holes in the outer surface as guides. Using a 1" dia. drill, ream out the large lower front hole in the outer surface of the frame rail. Install a 3/4"-10 X 1-3/4" "L" head capscrew (18) into the reamed out hole.

Screw a 3/4"-10 jam nut (22) all the way onto each of the 3/4"-10 X 2" capscrews (19). Place each of the 3/4"-10 x 2" capscrew/jam nut assemblies through the hole in the lower front ear of the driver's side and passenger's side push arm (3),(2), with the heads of the capscrews (19) toward the front of the vehicle. Fasten with a 3/4" lockwasher (20) and 3/4"-10 jam nut (22) on each capscrew (19).

2. DRIVER'S SIDE PUSH ARM: Place the rear frame section of the driver's side push arm (2) up between the sway bar and the outside surface of the frame, just ahead of the vehicle tie rod. Place the large hole in the rear frame plate section of the push arm (2) over the threaded end of the 3/4"-10 X 1-3/4" "L" head capscrew (18) installed earlier into the frame rail. (**Be especially careful to prevent the 3/4"-10 X 1-3/4" "L" head capscrew (18) from being pushed into the boxed frame rail.**) Fasten the 3/4"-10 X 1-3/4" "L" head capscrew (18) using a 3/4" lockwasher (20), and 3/4"-10 nut (21). Insert a 5/8"-11 X 4- 1/2" capscrew (15) through each of the remaining holes in the rear frame plate section of the push arm (2) and through the previously drilled out holes in the boxed frame rail. Install spacer (6) onto the threaded end of each 5/8"-11 X 4-1/2" capscrew (15) and fasten using 5/8" lockwashers (16) and 5/8"-11 nuts (17).

3. PASSENGER'S SIDE PUSH ARM: Place the rear frame plate section of the passenger's side push arm (3) up between the sway bar and the outside surface of the frame rail, just ahead of the vehicle tie rod. Place the large hole in the rear frame plate section of the push arm (3) over the threaded end of the 3/4"-10 X 1-3/4" "L" head capscrew (18) installed earlier into the frame rail. **(Be especially careful to prevent the 3/4"-10 X 1-3/4" "L" head capscrew (18) from being pushed into the boxed frame rail.)** Fasten the 3/4"-10 X 1-3/4" "L" head capscrew (18) using a 3/4" lockwasher (20) and 3/4"-10 nut (21) . Insert a 5/8"-11 X 4-1/2" capscrew (15) through each of the remaining smaller holes in the rear frame plate section of the push arm (3) and through the previously reamed out and drilled holes in the boxed frame rail. Install a bolting angle (7) on to the threaded end of each 5/8"-11 X 4-1/2" capscrew (15) and fasten using 5/8" lockwashers (16) and 5/8-11 nuts (17).

4. MOUNTING FRAME: Place the front mounting frame (1) up onto the front of the vehicle frame with the front hangers on the outside of the frame rails and the lower bolting plates between the push arms (2), (3). Line up two of the three holes in each front hanger of the mounting frame (1) with the front two holes in each frame rail and bumper bracket. Fasten the front hangers of the mounting frame (1) to the frame rails and bumper brackets using 7/16"-14 x 1-1/2" capscrews (8), 7/16" flatwashers (9), 7/16" lockwashers (10), 7/16" Washer Plate (23) and 7/16"-14 nuts (11). Line up the two inner holes in the hanger angles on the mounting frame (1) with the two inner holes in the lower front flange of the vehicle front crossmember. Fasten the hanger angles of the mounting frame (1) to the vehicle crossmember using two 7/16"-14 x 1-1/2" capscrews (8) 7/16" flatwashers (9), 7/16" lockwashers (10), and 7/16"-14 nuts (10). Align the three holes in the front section of each push arm (2),(3) with the holes in the lower end plates on the mounting frame (1). Fasten each of the push arms (2),(3) to the mounting frame (1) using three 1/2"-13 X 1-1/2" capscrews (12), 1/2" lockwashers (13), and 1/2"-13 nuts (14). Remove the jack stands from under the frame and lower vehicle to the ground.

5. FASTENERS: While holding the mounting frame (1) tight up against the bottom of the vehicle frame and crossmember, align the front bumper and tighten the 7/16" fasteners holding it, and the bumper brackets, to the frame rails and crossmember. Hold the push arms (2) , (3) tight up against the outside and bottom flange of the frame rails and tighten the 5/8" and 3/4" fasteners holding them to the frame. Adjust the 3/4" capscrews (19) using the 3/4" jam nuts (22) so that the heads of the capscrews are tight against the push angles of the mounting frame (1). Lock the 3/4" capscrews (19) in place using the rear 3/4" jam nuts (22). Tighten the 1/2" fasteners holding the push arms (2),(3) to the mounting frame (1). Using the two outer holes in the hanger angles on the mounting frame (1) as guides, drill two 15/32" holes up through the front flange of the vehicle crossmember. Fasten the mounting frame (1) to the crossmember at the drilled holes using 7/16"-14 x 1-1/2" capscrews (8), 7/16" flatwashers (9), 7/16" Washer Plate (23), 7/16" lockwashers (10), and 7/16"-14 nuts (11).

6. LIFT FRAME: Clean paint and burrs from the outside tube ends of the lift frame and the inside surfaces of the receiver tubes of the front mounting frame (1).

SPECIAL NOTE: Liberally coat the entire tube ends of the lift frame, the inside surfaces of the receiving tubes and threads of the slack adjusting bolts on the receiver tubes with chassis grease or anti-seize lubricant. Back off the slack adjusting bolts on the receiver tubes until they no longer protrude inside the tubes. Slide the lift frame into the receiver tubes of the front mounting frame (1) until the fastening holes line up. Tighten the slack adjusting bolts on the receiver tubes until the lift frame will just slide in and out of the receiver tubes. Secure the lift frame to the front mounting frame using 5/8" hinge pins (26) and hair pin cotters (27).

7. LIFT ARM: Install the lift arm (24) and lift cylinder or electric hydraulic unit onto the lift frame using the 5/8"-11 X 5-1/2" capscrew (25) through the upper lift frame ears and the rear lift arm hole. Place a 5/8"-11 X 4-3/4" capscrew through the front lift arm hole and the ram end of the lift cylinder or electric hydraulic unit. Place a 5/8"-11 X 3-1/4" capscrew through the lower lift frame ears and stationary end of the lift cylinder or electric hydraulic unit. Fasten the three 5/8"-11 capscrews using three 5/8"-11 locknuts (32).

8. LIFT CHAIN: Attach each end of the lift chain (40) to the two holes in each of the diagonal braces of the push frame using 7/16"-14 "U" bolts (41), 7/16" lockwashers (43), and 7/16"-14 nuts (42).

9. PUSH FRAME: Install the push frame onto the plow blade with the upper and lower pivot holes lined up with the pivot holes in the back of the plow blade. Insert the shorter pivot pin (36) down through the upper pivot holes. Insert the longer pivot pin (39) down through the lower pivot holes. Secure the pivot pins (36),(39) using 1/4" X 2" cotter pins (23).

10. ANGLE CYLINDERS: Install the angle cylinders between the push frame and the ears on the back side of the plow blade with the rod end of the cylinders toward the plow blade. The elbows in the ports of the angle cylinders should be between the angle cylinders and the push frame.

NOTE: When installing the angle cylinders on 8' and 8-1/2' plow blades, place four 1-1/4" flatwashers (30) between each lower push frame ear and the stationary end of each angle cylinder.

Attach the stationary end of the angle cylinders to the push frame using the two shorter cylinder pins (22). Attach the rod ends of the angle cylinders to the back side of the plow blade using the two longer cylinder pins (44). Secure the cylinder pins using 1/4" X 2" cotter pins (23).

11. PLOW MARKERS: Attach each plow marker (33) to the two holes in the upper outer surface of each end rib of the plow blade using two 5/16"-18 X 1" capscrews (35), 5/16" lockwashers (37), and 5/16"-18 nuts (38).

12. HOOK UP PINS: Compress each hook up pin spring (50) slightly and place them between the inner most ear and the center ear on each side of the push frame with the hole through the center of each spring lined up with the pin holes in the push frame ears. Insert each hook up pin (48) through the pin hole in each inner most ear of the push frame, through the center of the springs (50), and out through the center and outside ears on each side of the push frame. Compress the hook up pin springs (50) slightly and secure the hook up pins (48) using a 1" snap ring (49) in the snap ring groove of each hook up pin (48). **(The snap rings should be between the end of the spring and the inner surface of each of the center ears on the push frame.)**

13. PLOW TO VEHICLE ATTACHING: Pull back and lock the spring loaded hook up pins (48) on each side of the push frame. Attach the lift chain to the lift arm hooks and lift the back end of the push frame up level using the vehicle hydraulics. Line up the spring loaded hook up pins with the corresponding set of holes in the lower part of the mounting frame. Unlock the spring loaded hook up pins so that they go completely through the holes in the mounting frame and the push frame ears. Adjust the lift chain at the lift chain hooks on the lift arm so that the plow blade will lift fully and also be able to follow the ground contour while plowing.

NOTE: If the lift chain does not pull evenly, shorten the longer side by attaching at a different link or at half a link where the chain is attached to the pushframe with the 7/16" "U" bolts.

14. PUSH FRAME STOP BOLTS: Screw a 5/8"-11 jam nut (29) all the way onto each of the 5/8"-11 x 3" full thread capscrews (28). Place the capscrew/jam nut assemblies up through the ears on each side of the lower lift frame with the heads of the capscrews down. Fasten with a 5/8" lockwasher (31) and jam nut (29). Adjust the 5/8"-11 X 3" full thread capscrews (28) with the jam nuts (29) so that the heads of the capscrews (28) contact the push frame before the upper pivot section of the push frame contacts the lift arm or the lift cylinder / out front electric hydraulic unit while lifting plow or stacking snow.

NOTE: If the push frame is attached to a different set of connecting holes on the mounting frame, the push frame stop bolts should be checked and may need to be readjusted to prevent the push frame from contacting the lift arm, or the lift cylinder/out front electric hydraulic unit while lifting plow or stacking snow.

CAUTION: CHECK THE TRIPEDGE ADJUSTMENT AT THIS TIME.

- A. THE SPRINGS ARE PROPERLY ADJUSTED WHEN A PIECE OF PAPER CAN BE PLACED BETWEEN THE COILS.
- B. IF THE TRIPEDGE SPRINGS NEED ADJUSTMENT, LOOSEN THE BOTTOM LOCK NUT ON BOTH SPRING ASSEMBLIES. ROTATE THE TOP NUT UNTIL THE SPRINGS ARE PROPERLY ADJUSTED.
- C. BE SURE TO TIGHTEN THE BOTTOM LOCK NUT SECURELY ON BOTH ASSEMBLIES TO THE TOP NUT TO PREVENT LOOSENING OF THE ASSEMBLIES.

NOTICE: Diamond Equipment or Meyer Products assume no responsibility for installations not made in accordance with these instructions.

Instructions are subject to change without notice.

NOTICE: DIAMOND EQUIPMENT OR MEYER PRODUCTS ASSUME NO RESPONSIBILITY FOR INSTALLATIONS NOT MADE IN ACCORDANCE WITH THESE INSTRUCTIONS. INSTRUCTIONS ARE SUBJECT TO CHANGE WITHOUT NOTICE.