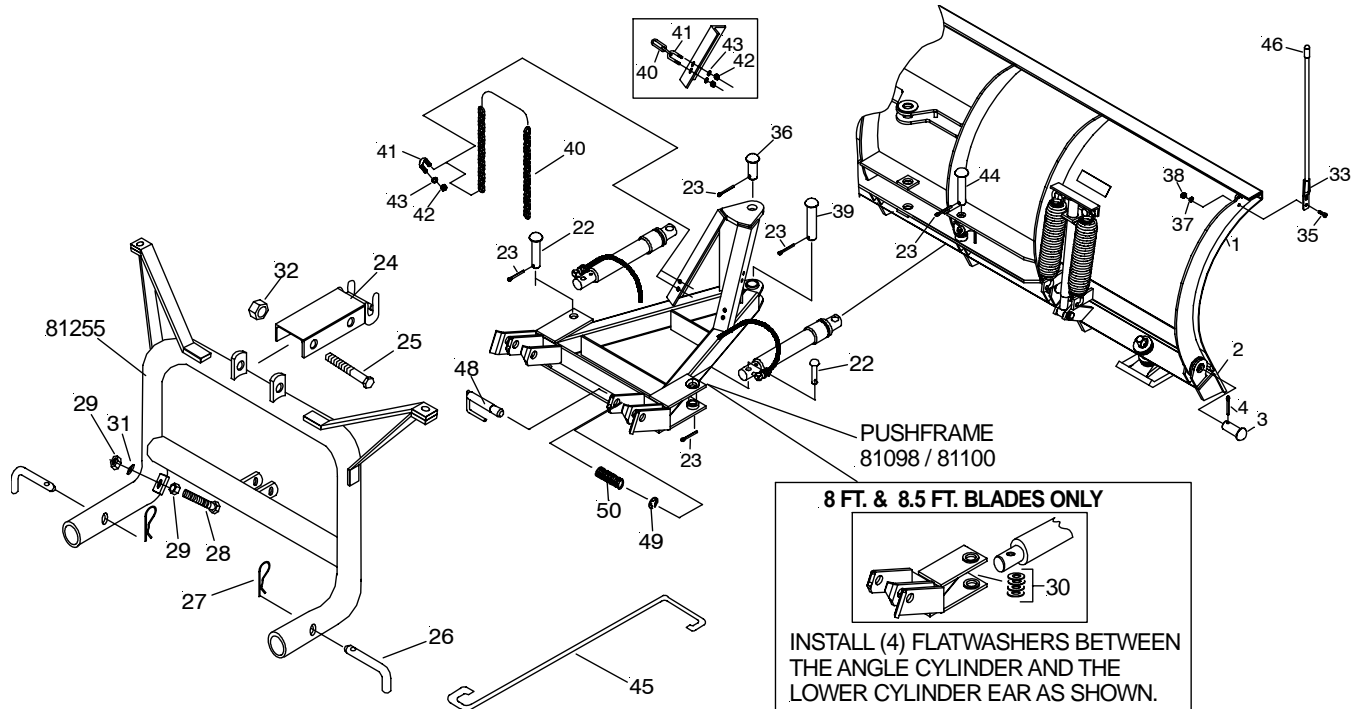




**SNOWPLOWS**  
by Meyer

**COMMON ATTACHING KIT 81500**  
**(STANDARD & SEVERE DUTY)**  
**FOR STRAIGHT TRIPEDGE PLOWS (PULL AWAY MOUNTINGS)**



**PARTSLIST**

ITEM	PART NO.	DESCRIPTION	QTY.	ITEM	PART NO.	DESCRIPTION	QTY.
22 #	819000 001 002	CYLINDER PIN	2	37 *	8507001 010	5/16" LOCKWASHER	4
23 *	20420	COTTER PIN 1/4" X 2"	6	38 *	8501001 003	5/16"-18 NUT	4
24	812000 040	LIFT ARM WELMENT	1	39 #	811000 003 008	BLADE PIVOT PIN	1
25 *	8500003 377	5/8"-11 X 5-1/2" CAPS	1	40	8511002 008 059	LIFT CHAIN	1
26 #	11006	HINGE PIN	2	41 *	8518001 026	7/16"-14 NC U-BOLT	2
27 *	21984	HAIR PIN COTTOER	2	42 *	8501001 007	7/16"-14 NC NUT	4
28 *	8500003 307 001	5/8"-11 X 3" FULL THD.	2	43 *	8507001 012	7/16"-14 LOCKWASHER	4
29 *	8501003 013	5/8"-11 LOCKNUT	4	44 #	819000 001 005	CYLINDER PIN (LIVE END)	2
30 *	20363	1-1/4" FLATWASHER	8	45	819000 013	RELEASE HOOK	1
31 *	8507001 015	5/8" LOCKWASHER	2	46	811000 161	MARKER TIP (REPLACEMENT)	
32 *	20309	5/8"-11 LOCKNUT	1	48 #	814000 015	1" HOOK UP PIN	2
33	811000 095	PLOW MARKER	2	49 *	8509002 027	1" SNAP RING	2
35 *	8500003 035	5/16"-18 X 1" CAPSREW	4	50 *	814000 005	SPRING	2
36 #	811000 003 003	UPPER PIVOT PIN	1				

# ITEMS PACKED IN 80066 BOLT BAG

\* ITEMS PACKED IN 80067 BOLT BAG

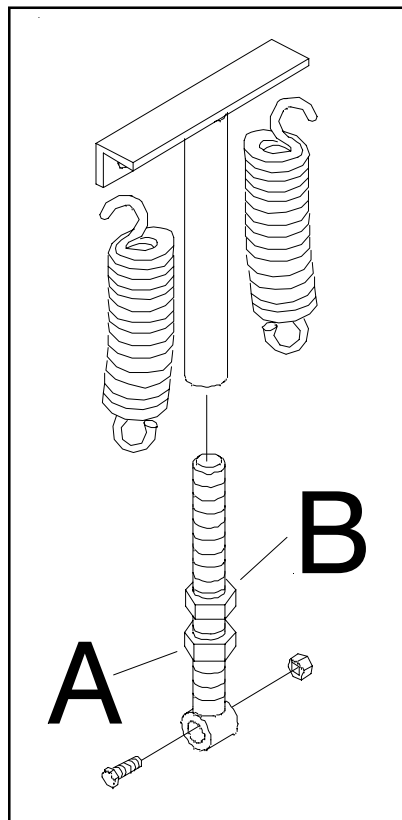
**NOTE: PUSHFRAME 81098 / 81100 ANDLIFTF RAME 81255 ARE NOT PART OF KIT 81500 AND MUST BE ORDERED SEPARATELY.**

Diamond Equipment reserves the right, under its continuing product improvement program, to change construction or design details, specifications and prices without notice or without incurring any obligation.



**CAUTION: CHECK THE TRIPEDGE ADJUSTMENT AT THIS TIME.**

- A. THE SPRINGS ARE PROPERLY ADJUSTED WHEN A PIECE OF PAPER CAN BE PLACED BETWEEN EACH COIL.
- B. IF THE TRIPEDGE SPRINGS NEED ADJUSTMENT, LOOSEN THE BOTTOM LOCK NUT (A) ON BOTH SPRING ASSEMBLIES. ROTATE THE TOP NUT (B) UNTIL THE SPRINGS ARE PROPERLY ADJUSTED.
- C. BE SURE TO TIGHTEN THE BOTTOM LOCK NUT SECURELY ON BOTH ASSEMBLIES TO THE TOP NUT TO PREVENT LOOSENING OF THE ASSEMBLIES.



**Spring Assembly**