

BOSS PRODUCTS
A Division of Northern Star Industries, Inc.
P.O. Box 787 Iron Mountain MI 49801-0787
www.bosspow.com

**1997-2002 JEEP WRANGLER
SPORT DUTY UNDERCARRIAGE
MOUNTING INSTRUCTIONS
(PART NO. LTA05490)**

WARNING

Many newer trucks are now equipped with air bags. DO NOT under any circumstances disable, remove or relocate any sensors or other components related to the operation of the air bags.

For recommended vehicle models refer to the Boss Snowplow Application Chart and Selection Guide.

To comply with Federal Regulations and to assure a safe vehicle, the Front Gross Axle Weight Rating (FGAWR), Rear Gross Axle Weight Rating (RGAWR), and the Gross Vehicle Weight Rating (GAWR) must not be exceeded at any time.

Due to the variety of equipment that can be installed on this vehicle, it is necessary to verify that the Front Gross Axle Weight Rating (FGAWR), Rear Gross Axle Weight Rating (RGAWR), and the Gross Vehicle Weight Rating (GAWR) are not exceeded at any time. This may require weighing the vehicle and adding ballast as necessary. It may also limit payload capacity of the vehicle. It is the operator's responsibility to verify that these ratings are not exceeded.

1997-2002 JEEP WRANGLER SPORT DUTY UNDERCARRIAGE MOUNTING INSTRUCTIONS

The mounting procedure outlined below covers the 1997-2002 Jeep Wrangler. Note that a Front Gross Axle Rating (FGAWR) of 2500 lbs. is required. A suspension upgrade and additional ballast may be necessary. You will need to refer to the illustrations and familiarize yourself with each of the undercarriage components and their relative position to each other. Then proceed as follows:

1. Begin by removing the four screws that hold the plastic "Jeep" valance in place above the bumper. Keep these screws as they will need to be reinstalled.
2. Remove the driver side bumper bolt below the frame rail. Keep this bolt as it will be need to be reinstalled.
3. Loosen the driver side sway bar bracket by removing the front sway bar bracket bolt and loosening the rear sway bar bracket bolt as far as possible.
4. While lifting the sway bar bracket, place Driver Side Pushbeam Support Plate (62B) under the sway bar bracket and against the driver side frame rail of the vehicle.
5. Insert the bumper bolt, removed in step 2, through Driver Side Pushbeam Support Plate (62B).
6. Insert the front sway bar bracket bolt through Driver Side Pushbeam Support Plate (62B).
7. Locate and drill three 9/16" diameter holes on frame rail as indicated by Driver Side Pushbeam Support Plate (62B). Two holes are located on the side of the frame rail, one is underneath the frame rail.
8. Insert Nut Bar (101) through the slotted hole located on the bottom of the frame rail.
9. Insert ½"-13 X 1-1/2" Hex Head Bolt (A) through the forward most horizontal hole located on Driver Side Pushbeam Support Plate (62B) and thread onto Nut Bar (101). Leave Finger Tight.
10. Insert Nut Bar (101) through the slotted hole located on the bottom of the frame rail.

11. Insert ½"-13 X 1-1/2" Hex Head Bolt (A) through the rear most horizontal hole located on Driver Side Pushbeam Support Plate (62B) and thread onto Nut Bar (101). Leave Finger Tight.
12. Insert Nut Bar (101) through the slotted hole located on the bottom of the frame rail.
13. Insert ½"-13 X 1-1/2" Hex Head Bolt (A) through the bottom hole located on Driver Side Pushbeam Support Plate (62B) and thread onto Nut Bar (101). Leave Finger Tight.
14. Repeat steps 2-13 for Passenger Side Pushbeam Support Plate (62A).
15. Place Pushbeam (62) between Driver Side and Passenger Side Pushbeam Support Plates (62A & 62B). Pushbeam (62) should be placed at a height of 14-1/2" from the ground to the center of the hook hole.
16. Attach Pushbeam (62) using eight ½"-13 X 1-1/2" Hex Head Bolts (A) and eight ½"-13 Self-Locking Nuts (B).
17. Tighten all hardware. Be sure to reference Figure 3 at the end of this manual to ensure proper torque values for each bolt.
18. Check all components for proper clearance around moving parts on the vehicle by fully turning the steering wheel in both directions.
19. Replace the plastic "Jeep" valance and mark the location of the four mounting holes.
20. Drill 7/32" holes into Driver Side and Passenger Side Pushbeam Support Plates (62A & 62B).
21. Install the self-tapping screws that were removed in step 1 into the drilled holes.

Installation Notes:

- A. This installation requires Headlight Adapter Kit MSC04599.

1997-2002 JEEP WRANGLER SPORT DUTY UNDERCARRIAGE INSTALLATION PROCEDURE

REF. NO.	DESCRIPTION	PART NO.	QTY.
62	Push Beam Assembly, Light Duty	PBA05495	1
62A	Push Beam Support Plate, Passenger Side	PBA05499	1
62B	Push Beam Support Plate, Driver Side	PBA05498	1
101	Nut Bar ½"-13 X 24"	LTA05391	6
	FASTENER KIT, JEEP WRANGLER, 97-02	HDW05658	1
Includes:			
A	½" – 13 x 1-½" Grade 5 Hex Head Bolt	HDW01728	14
B	½" – 13 Hex Head Lock Nut	HDW01748	8
C	½" Split Lock Washer	HDW01732	6

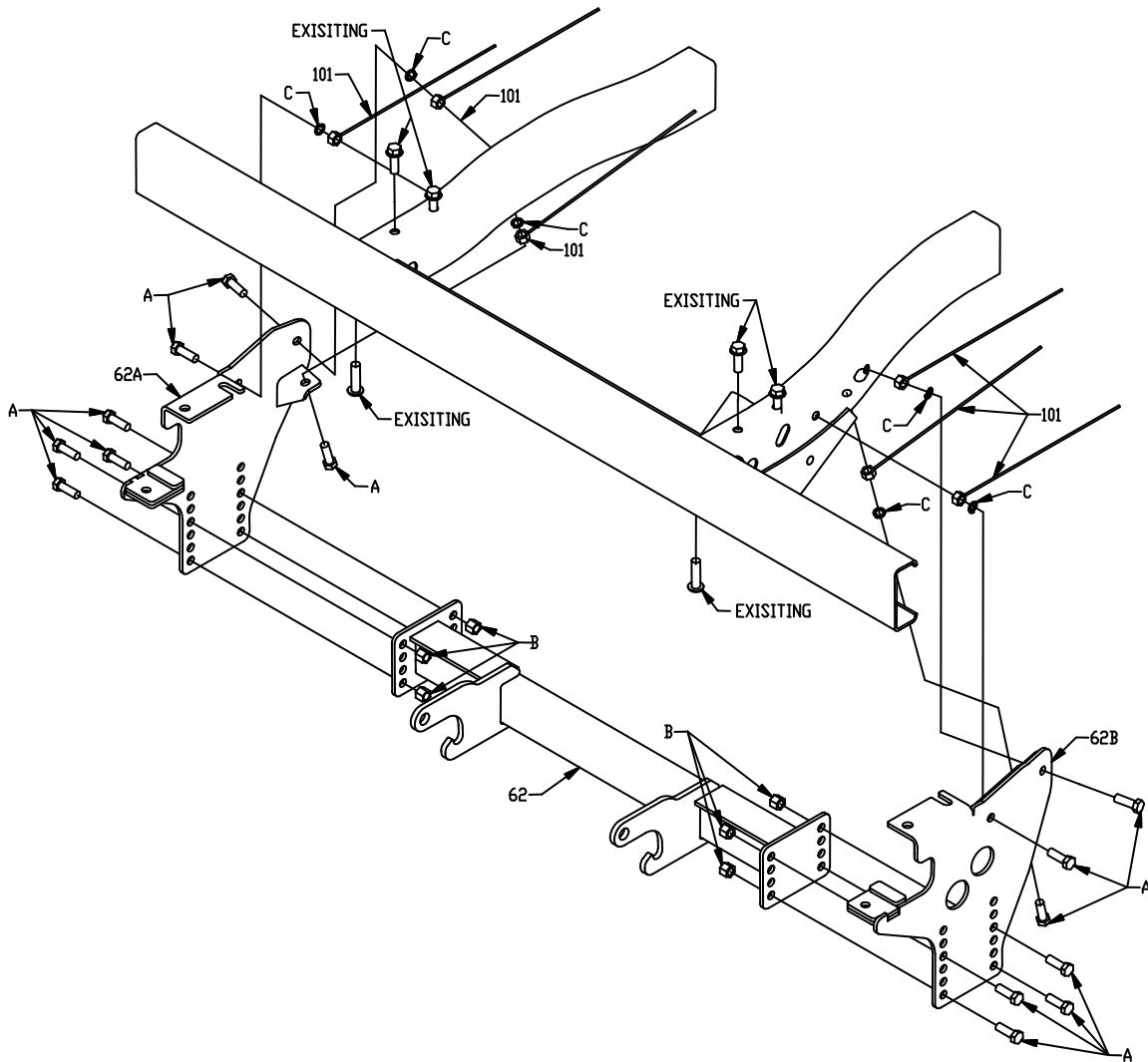


Figure 1

G10456

RECOMMENDED PUSHBEAM HEIGHT

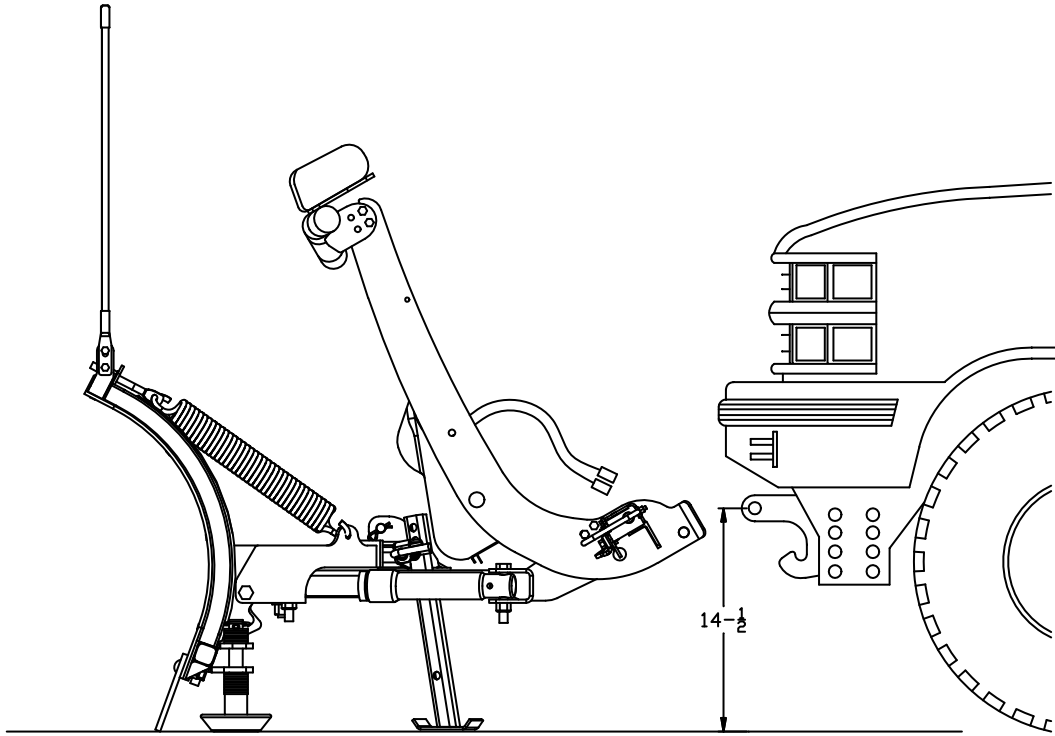


Figure 2

G10299

GUIDE TO RECOMMENDED ASSEMBLY TORQUE



DIAMETER / PITCH	GRADE 5	GRADE 8	GRADE 8.8	GRADE 10.9
1/4-20	6	9		
5/16-18	14	19		
3/8-16	23	33		
7/16-14	38	53		
1/2-13	56	80		
9/16-12	82	116		
5/8-11	113	159		
3/4-10	201	283		
M10 X 1.25			36	
M10 X 1.5				49
M12 X 1.75				71
M14 X 2.0				80

ALL TORQUE VALUES ARE IN FOOT-POUNDS (FT.-LB.)

Figure 3

G10410

* The torque values listed above are based on dry, coated bolts, variables such as oil, or other lubrications may appreciably alter these values and must be taken into consideration.

NOTE: IT IS IMPORTANT THAT ALL FASTENERS BE PROPERLY TORQUED TO ASSURE A SAFE OPERATING PLOW.