

BOSS PRODUCTS  
A Division of Northern Star Industries, Inc.  
P.O. Box 787 Iron Mountain MI 49801-0787  
[www.bosspow.com](http://www.bosspow.com)

**2009 & NEWER FORD F-150  
RT3 SPORT DUTY UNDERCARRIAGE  
MOUNTING INSTRUCTIONS  
(PART NO. LTA09164)**

# **WARNING**

Many newer trucks are now equipped with air bags. DO NOT under any circumstances disable, remove or relocate any sensors or other components related to the operation of the air bags.

For recommended vehicle models refer to the Boss Snowplow Application Chart and Selection Guide.

To comply with Federal Regulations and to assure a safe vehicle, the Front Gross Axle Weight Rating (FGAWR), Rear Gross Axle Weight Rating (RGAWR), and the Gross Vehicle Weight Rating (GAWR) must not be exceeded at any time.

Due to the variety of equipment that can be installed on this vehicle, it is necessary to verify that the Front Gross Axle Weight Rating (FGAWR), Rear Gross Axle Weight Rating (RGAWR), and the Gross Vehicle Weight Rating (GAWR) are not exceeded at any time. This may require weighing the vehicle and adding ballast as necessary. It may also limit payload capacity of the vehicle. It is the operator's responsibility to verify that these ratings are not exceeded.

## **2009 & NEWER FORD F-150 RT3 SPORT DUTY UNDERCARRIAGE MOUNTING INSTRUCTIONS**

The mounting procedure outlined below covers 2009 & Newer FORD F-150 trucks. You will need to refer to the illustrations and familiarize yourself with each of the undercarriage components and their relative position to each other. Then proceed as follows:

1. Remove the bumper and tow hooks.
2. Align the holes on bottom of Push Beam Support Plate (62A) with the holes under the end of the frame rails. Using the existing bolts from the tow hooks attach support plate to frame. Mark the holes on the outside the frame rails. Remove the plates and drill two 9/16" holes on each frame rail.
3. Attach Push Beam Support Plate (62A) using two 1/2" -13 1-1/2" GR5 Hex Head bolts (A) and two 1/2"-13 Nylon Lock Nuts (C). Underneath put the Push Beam Support Plate between the tow hook and frame to attach the plates use existing tow hook bolts and nut plates. Leave finger tight.
4. Repeat steps 2 & 3 for other side using Push Beam Support Plate (62B).
5. Remove the skid plate from crossmember under the truck and retain for the customer.
6. Remove the J-nuts from the bottom of the crossmember. Insert 3/8" Bolt Bars (99) into the crossmember through the hole from the J-nuts into the front holes in the crossmember.  
NOTE: Some 3/8" holes may need to be reamed out for the bolt bar to fit.
7. Insert two 1/2" -13 1-1/2" GR5 Hex Head bolts (A) into the back set of holes in crossmember. Bolt Skid Plate Attachment (75) onto the crossmember using two 3/8"-16 Nylon Lock Nuts (F), 1/2" Split Lock Washers (D), and 1/2"-13 Full Nuts (E) leave finger tight.
8. Attach Angle Brackets (75A & 75B) to the Skid Plate Attachment using four 1/2" -13 1-1/2" GR5 Hex Head bolts and four 1/2"-13 Nylon Lock Nuts leave finger tight.

9. Bolt Push Beam Assembly (62) onto Push Beam Support Plates (62A & 62B) using ½"-13 x 1-1/2" GR 5 Hex Head Bolts (A) and ½"-13 Nylon Lock Nuts (C) leave finger tight.

**Note:** The proper Push Beam Assembly height is 14-1/2" from the ground to the center of the pin receiving holes on the Push Beam hooks. (See Figure 2)

10. Bolt Angle Brackets (75A & 75B) to the tabs on the back of Push Beam Assembly (62) using ½"-13 x 1-1/2" GR 8 Hex Head Bolts (B) (check the marks on the top to be sure they are GR 8 bolts see Figure 3) and ½"-13 Nylon Lock Nuts (C).
11. With all the undercarriage parts in place, securely fasten all mounting hardware. It is important that all fasteners be properly torqued (see Figure 3) to assure a safe operating plow. Re-tighten all fasteners after 2 hours of plowing.
12. Before replacing the bumper on the truck measure and notch, or remove the valance. Replace the bumper on the truck.

**Note:** Headlight adapter MSC09993 is used for this application.

## 2009 & NEWER FORD F-150 RT3 SPORT DUTY UNDERCARRIAGE MOUNTING INSTRUCTIONS

REF. NO.	DESCRIPTION	PART NO.	QTY.
62	Push Beam Assembly	PBA09166	1
62A	Push Beam Support Plate Passengers Side	PBA09170	1
62B	Push Beam Support Plate Drivers Side	PBA09171	1
75	Skid Plate Attachment	LTA09167	1
75A	Angle Bracket Passengers Side	LTA09169	1
75B	Angle Bracket Drivers Side	LTA09168	1
99	3/8" Bolt Bar	LTA09187	2
	FASTENER KIT, FORD, 2009 & NEWER	HDW09174	
Includes:			
A	1/2"-13 X 1-1/2" Hex Head Bolt	HDW01728	18
B	1/2"-13 X 1-1/2" Hex Head Bolt GR8	HDW05553	4
C	1/2"-13 Nylon Lock Nut	HDW01748	20
D	1/2" – 13 Washer Split lock	HDW01732	2
E	1/2" -13 Hex Head Full Nut	HDW02410	2
F	3/8" – 16 Nylon Lock Nut	HDW01720	2

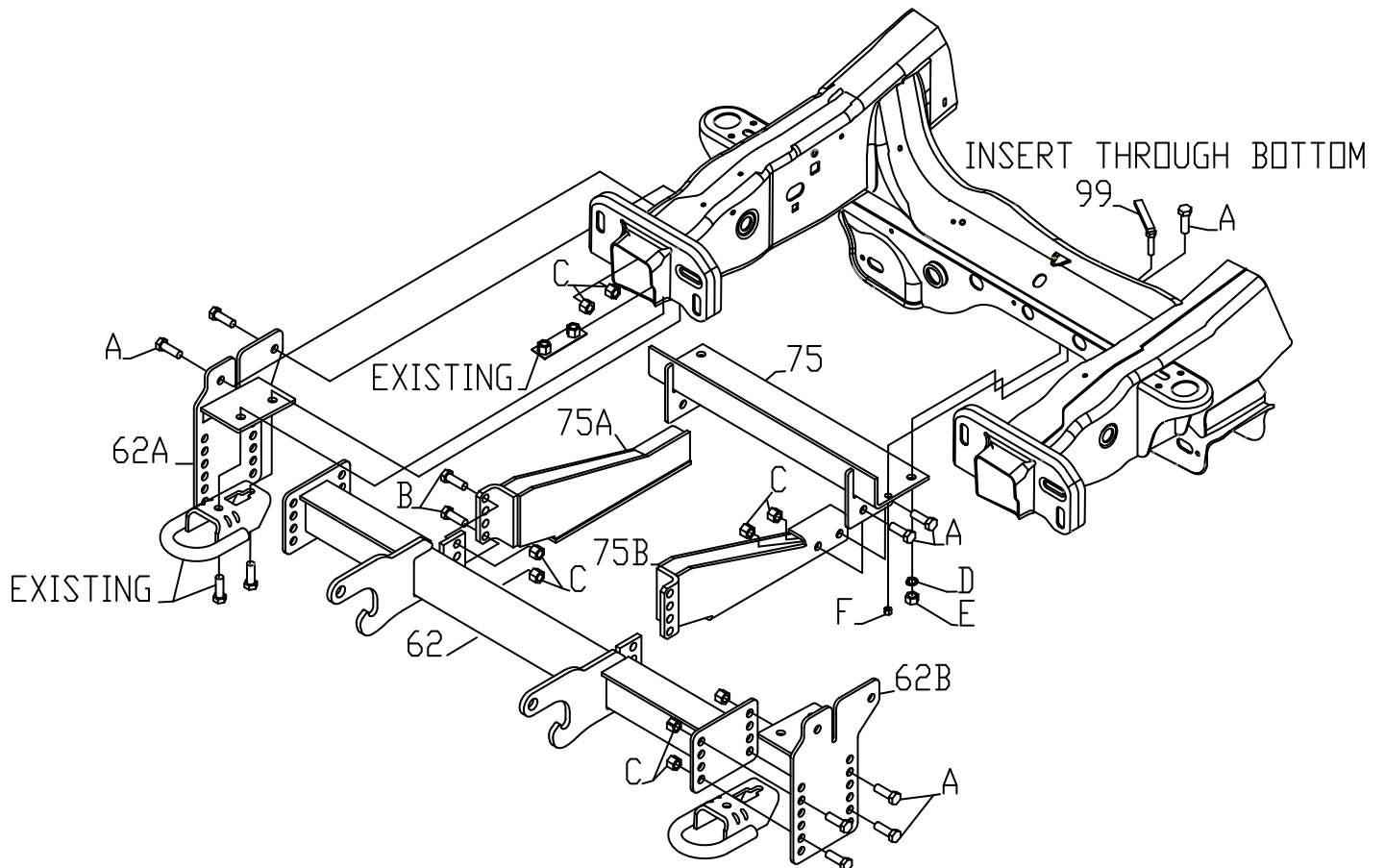


Figure 1

## RECOMMENDED PUSHBEAM HEIGHT

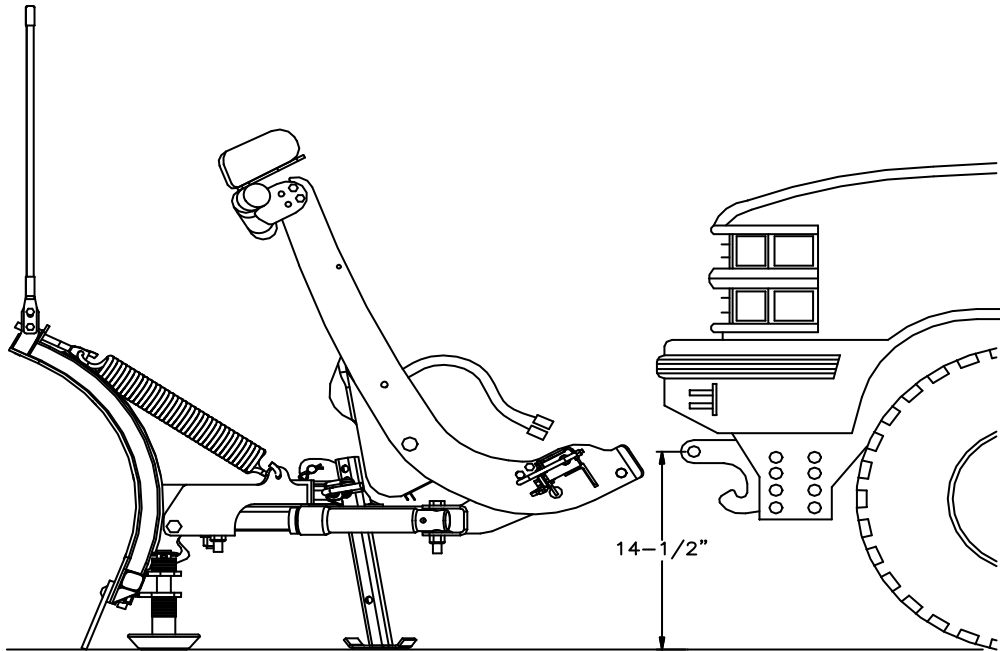
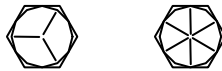


Figure 2

G10155

## GUIDE TO RECOMMENDED ASSEMBLY TORQUE



DIAMETER / PITCH	GRADE 5	GRADE 8	GRADE 8.8	GRADE 10.9
1/4-20	6	9		
5/16-18	14	19		
3/8-16	23	33		
7/16-14	38	53		
1/2-13	56	80		
9/16-12	82	116		
5/8-11	113	159		
3/4-10	201	283		
M10 X 1.25			36	
M10 X 1.5				49
M12 X 1.75				71
M14 X 2.0				80

ALL TORQUE VALUES ARE IN FOOT-POUNDS (FT.-LB.)

Figure 3

G10410

- The torque values listed above are based on dry, coated bolts, variables such as oil, or other lubrications may appreciably alter these values and must be taken into consideration.
- **NOTE:** IT IS IMPORTANT THAT ALL FASTENERS BE PROPERLY TORQUED TO ASSURE A SAFE OPERATING PLOW.