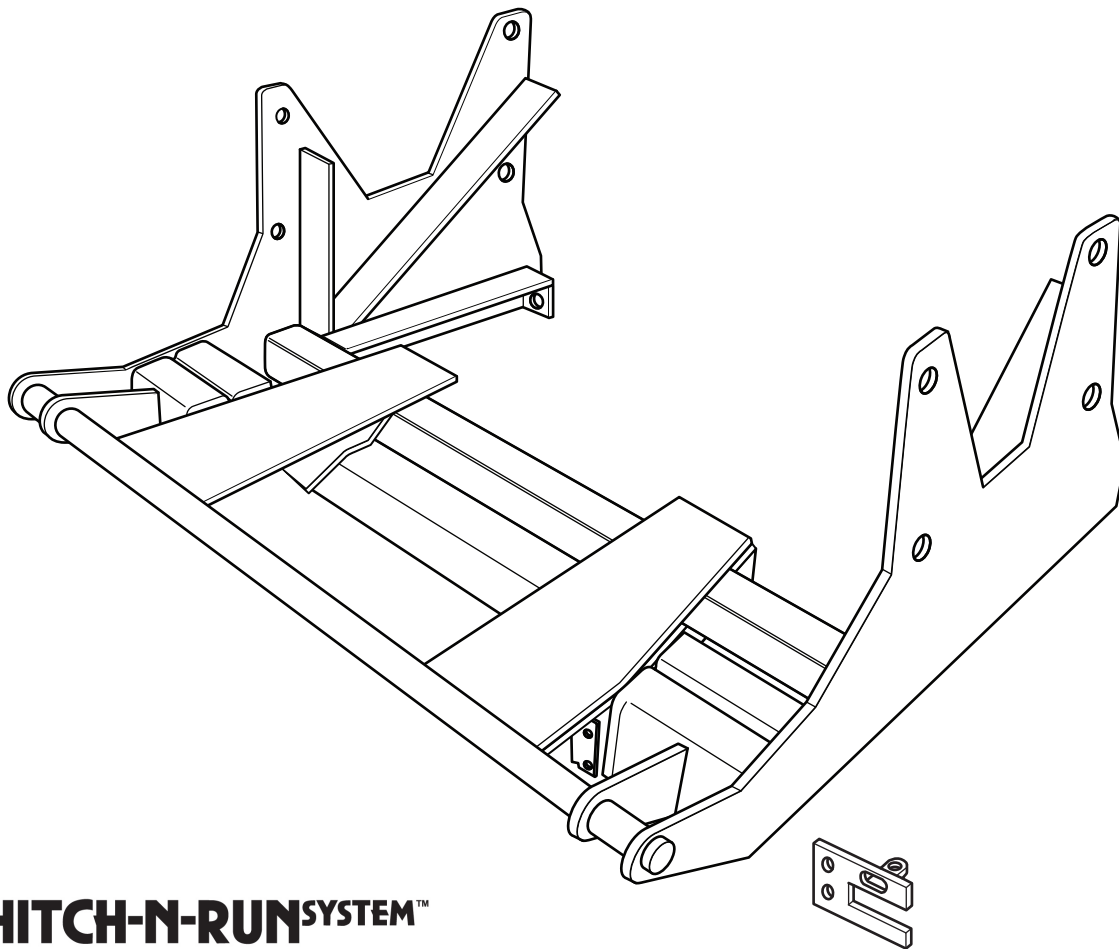




# **SNO-PRO<sup>®</sup> 3000**

**2006 - Dodge Ram 1500  
(With Max. FGAWR ONLY)**

**Vehicle Mounting Kit: 1FK37**



Curtis Industries Inc. LLC, 111 Higgins St., Worcester, MA 01606 TEL: (800) 343-7676 FAX: (508) 854-3377 For Parts and information visit us at [www.Curtisindustries.net](http://www.Curtisindustries.net)  
Curtis Industries Inc. LLC, reserves the right to change product design or specifications without notice or liability.  
Curtis Snow Plows are protected by the following U.S. Patent Numbers: 6,145,222 and 6,209,231 Licensed under U.S. Patent Number 5,568,694 & Canadian Patent Number 2,137,853.  
Other patents pending.

## 1FK37 Vehicle Mount Kit Parts List

Item #	Description	Qty.
1	Mounting Frame	1
2	Right Side Angle Bracket	1
3	Left Side Angle Bracket	1
4	Short Bolting Bar	2
5	Long Bolting Bar	2
<b>Hardware Bag Components Included In This Kit</b>		
6	1/2"-13 x 4" Bolt, Gr.5, Plated	4
7	1/2"-13 x 4-1/2" Bolt, Gr.5, Plated	4
8	1/2" Flat Washer, Plated	8
9	1/2" Lock Washer, High Strength, Plated	8
10	1/2"-13 Hex Nut, Plated	8
11	5/8"-11 x 2-1/2" Carriage Bolt, Gr.5, Plated	2
12	5/8" Lock Washer, High Strength, Plated	2
13	5/8"-11 Hex Jam Nut, Plated	4
<b>Hardware Components Included In Plow Light Harness Kit</b>		
1a	Dual Plug Harness Bracket	1
-	10-32 x 3/4" Hex Head Screw, Plated	2
-	10-32 Nylock Lock Nut, Plated	2
-	8-32 x 1" Hex Head Screw, Plated	1
-	8-32 Nylock Lock Nut, Plated	1
-	#8 Nylon Flat Washer, 3/4" O.D.	1
-	#8 Flat Washer, SAE, Plated	1

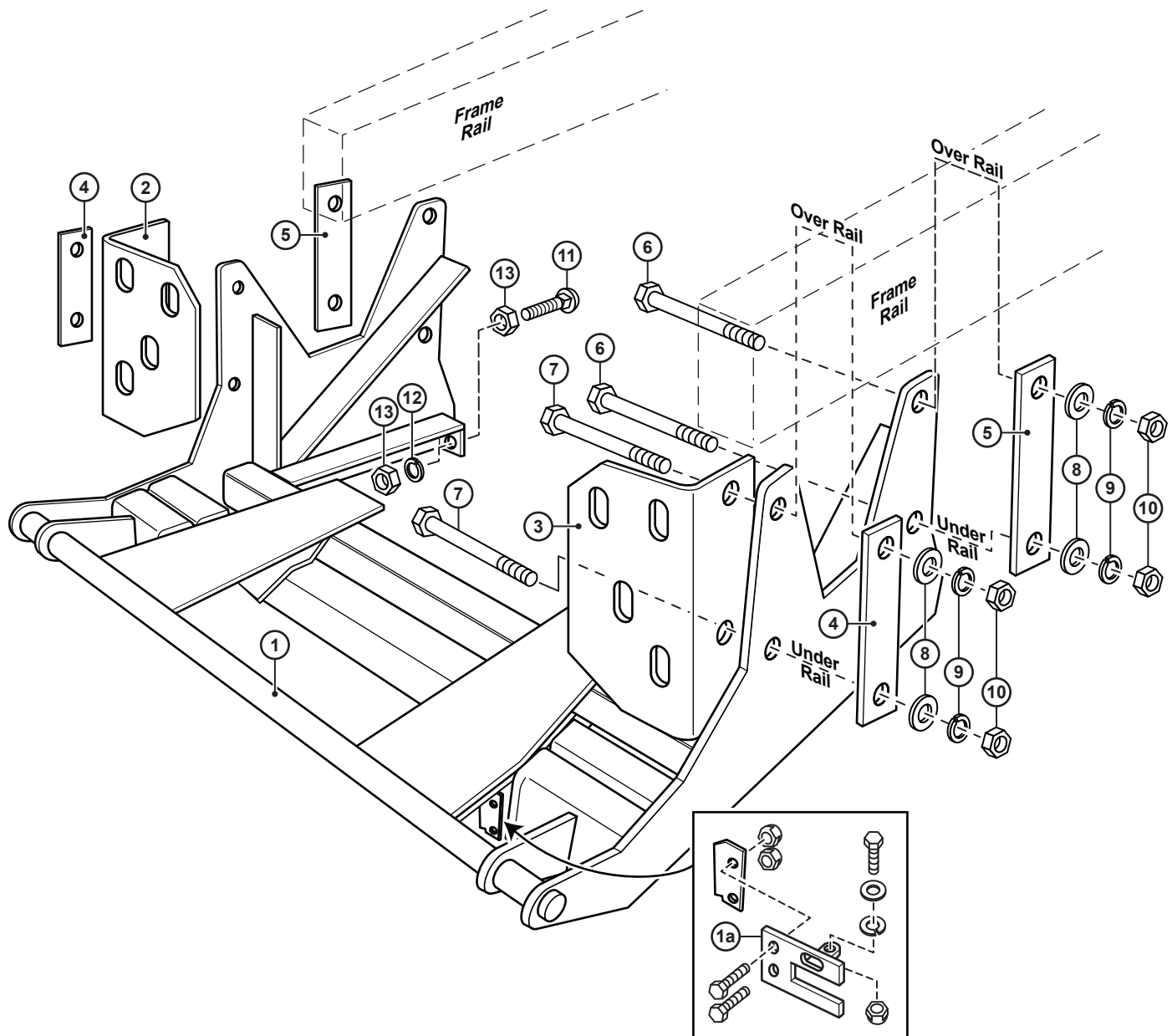


### WARNING

It is highly recommended that front "helper springs", "airshocks", or other similar devices be installed onto this vehicle to prevent the front suspension from "bottoming out" while carrying a snow plow.

Vehicle must be properly "ballasted" by placing ballast weight behind the centerline of Rear Axle so that no more than 62% of the total weight of the Vehicle, Snow Plow, Driver, Ballast weight, (and any cargo) is placed on the Front Axle while at the same time not exceeding the Gross Vehicle Weight Rating and Front or Rear Gross Axle Weight Ratings.

## 1FK37 Mounting



**Curtis Industries, LLC. reserves the right to change product design or specifications without notice or liability. Curtis Snow Plows and Truck equipment should only be used on vehicles equipped with the manufacturer's Snow Plow preparation package. Snow Plowing without the original snow plow preparation package may damage your vehicle and the added weight of the equipment may impair the operation and control of the vehicle.**

# 1FK37: 2006 - Dodge Ram 1500

## Mounting Kit Installation Instructions

### 1. VEHICLE PREPARATION

- (1a.) Remove and save the two inside nuts holding the front bumper to the large bracket welded to the end of each vehicle frame rail. Install the right and left side angle brackets (2 & 3) onto the back side of the large rectangular bracket welded to the end of each frame rail. Fasten loosely using the original equipment nuts removed earlier.
- (1b.) If the front bumper has an attached air dam, either remove it completely, or trim out a section 39" long from the center of it. Models with "Laramie" style extended front bumpers will require a 4" x 39" piece to be trimmed out of the lower plastic center section. Remove the plastic front license plate bracket and either reinstall it up-side down or remove it and attach the license plate directly to the bumper.
- (1c.) Screw a 5/8"-11 hex jam nut (13) all the way onto each of the 5/8"-11 x 2-1/2" carriage bolts (11). Place each carriage bolt / jamb nut assembly into the push ears at the rear of the mounting frame (1) with the heads of the carriage bolts toward the rear of the vehicle. Fasten loosely using a 5/8"-11 jam nut (13), and 5/8" lock washer (12) on each carriage bolt / jam nut assembly.



**NOTE**

**All fasteners should remain loose or "finger tight" until all components have been attached to Vehicle or installation instructions specify tightening.**

### 2. MOUNTING FRAME

- (2a.) Lift the mounting frame (1) up under the front of the vehicle with the vertical plates between the vertical inner surfaces of the frame rails and with the holes in the front vertical plates lined up with the two holes through each angle bracket (2 & 3). Temporarily fasten the mounting frame (1) to the frame rails (at the top hole in the rear vertical plates) using 1/2"-13 x 4" bolts (6) over the top of each frame rail.
- (2b.) Insert 1/2"-13 x 4-1/2" bolts (7) through the holes in the angle brackets (2 & 3), through the two holes in each front vertical plate of the mounting frame (1) (one bolt should pass over the top of each frame rail and one under the rail). Place a short bolting bar (4) over the threaded ends of the 1/2"-13 x 4-1/2" bolts (7) over and under each frame rail. Fasten using 1/2" flat washers (8), 1/2" lock washers (9) and 1/2"-13 nuts (10).
- (2c.) Insert a 1/2"-13 x 4" bolt (6) through the rear lower hole in each vertical plate of the mounting frame. Place a long bolting bar (5) over the threaded ends of the 1/2" x 4" bolts (6) over and under each frame rail. Fasten using 1/2" flat washers (8), 1/2" lock washers (9), and 1/2"-13 nuts (10).

### 3. TIGHTENING

- (3a.) Tighten the original equipment nuts holding the angle brackets (2 & 3) and bumper to the large rectangular brackets welded to the front of the frame rails.
- (3b.) Tighten the 1/2"-13 x 4" bolts (6) and 1/2"-13 x 4-1/2" bolts (7) and nuts (10) installed in the front and rear vertical plates of the mounting frame (1) and through the bolting bars (2 & 3).
- (3c.) Adjust the 5/8"-11 x 2-1/2" carriage bolts (11) using the rear 5/8"-11 jam nuts (13) so that the heads of the carriage bolts are tight against the heads of the two outer bolts in the front of the vehicle front suspension cross member. Lock the 5/8"-11 x 2-1/2" carriage bolts (11) in place by tightening the front 5/8"-11 jamb nuts (13).

### 4. FINAL ASSEMBLY AND INSPECTION

Inspect the mounting attachment bolts to be certain that they are all in place and that they are all tight.

### 5. OPTIONAL PLUG MOUNT BRACKET INSTALL



**NOTE**

**Install the Plug Mount Bracket if the harness will be mounted on the frame kit, otherwise, the harness may be routed through the grill, bumper, etc.**

Using (2) 10-32 x 3/4" hex bolts and nylon locknuts, fasten the Plug Mount Bracket to the Plug Mount Bracket Mounting Tab located on the drivers side of the frame kit receiver. The included 8-32 hardware is used for mounting the hi-amp battery leads to the Plug Mount Bracket, if used.

