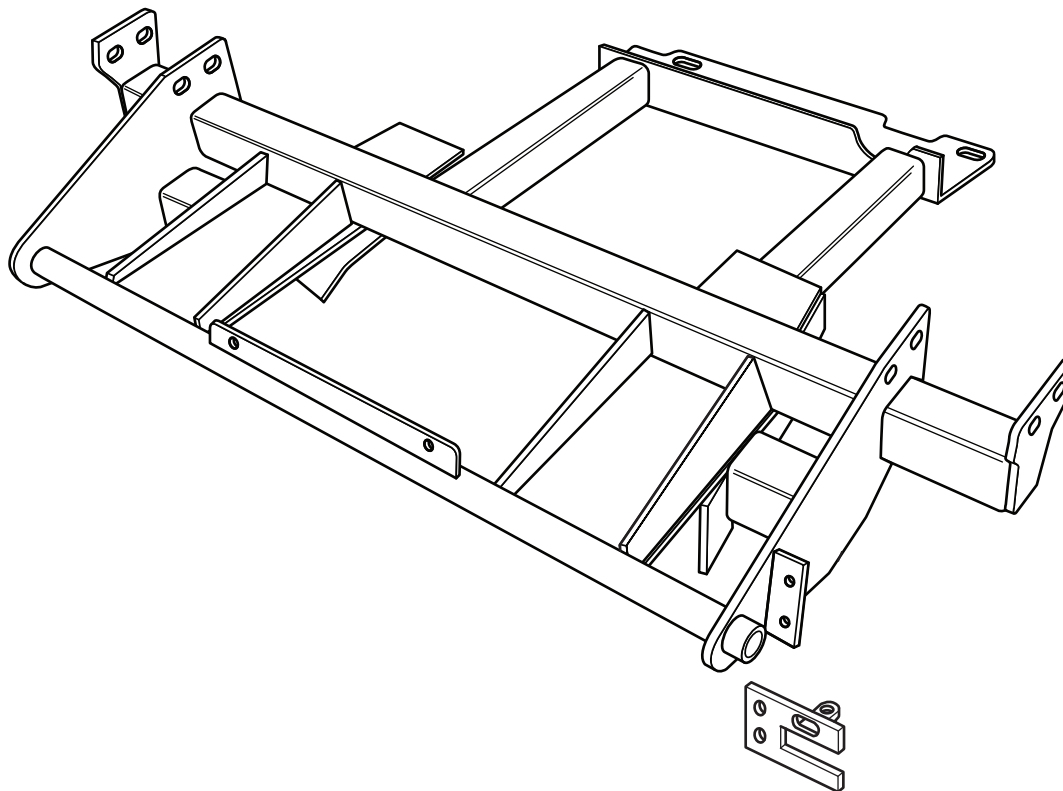




SNO-PRO[®] 3000

**2007 - GM (New Style) 1500 Truck & Tahoe / Yukon 1500
(4x4 With VYU ONLY)**

Vehicle Mounting Kit: 1FK40



Curtis Industries Inc. LLC, 111 Higgins St., Worcester, MA 01606 TEL: (800) 343-7676 FAX: (508) 854-3377 For Parts and information visit us at www.Curtisindustries.net
Curtis Industries Inc. LLC, reserves the right to change product design or specifications without notice or liability.
Curtis Snow Plows are protected by the following U.S. Patent Numbers: 6,145,222 and 6,209,231 Licensed under U.S. Patent Number 5,568,694 & Canadian Patent Number 2,137,853.
Other patents pending.

1FK40 Vehicle Mount Kit Parts List

Item #	Description	Qty.
1	Mounting Frame	1
2	Bolting Bar	2
Hardware Bag Components Included In This Kit		
3	1/4"-20 x 3/4" Hex Bolt, Gr. 5, Plated	2
4	1/4" Flat Washer, Plated	2
5	1/4" Lock Washer, Plated	2
6	1/4"-20 Hex Nut, Plated	2
7	5/8"-11 x 7" Hex Bolt, Gr. 5, Plated	2
8	5/8" Lock Washer, High Strength, Plated	2
9	5/8" Flat Washer, Plated	2
10	5/8"-11 Hex Nut, Plated	2
11	12mm x 1.75mm x 130mm Hex Bolt, Gr. 10.9, Plated	4
12	12mm Flat Washer, Plated	2
13	12mm Lock Washer, High Strength, Plated	2
14	12mm x 1.75mm Hex Nut, Plated	2
Hardware Components Included In Plow Light Harness Kit P/N: 1TBP134B		
1a	Dual Plug Harness Bracket	1
-	10-32 x 3/4" Hex Head Screw, Plated	2
-	10-32 Nylock Lock Nut, Plated	2
-	8-32 x 1" Hex Head Screw, Plated	1
-	8-32 Nylock Lock Nut, Plated	1
-	#8 Nylon Flat Washer, 3/4" O.D.	1
-	#8 Flat Washer, SAE, Plated	1

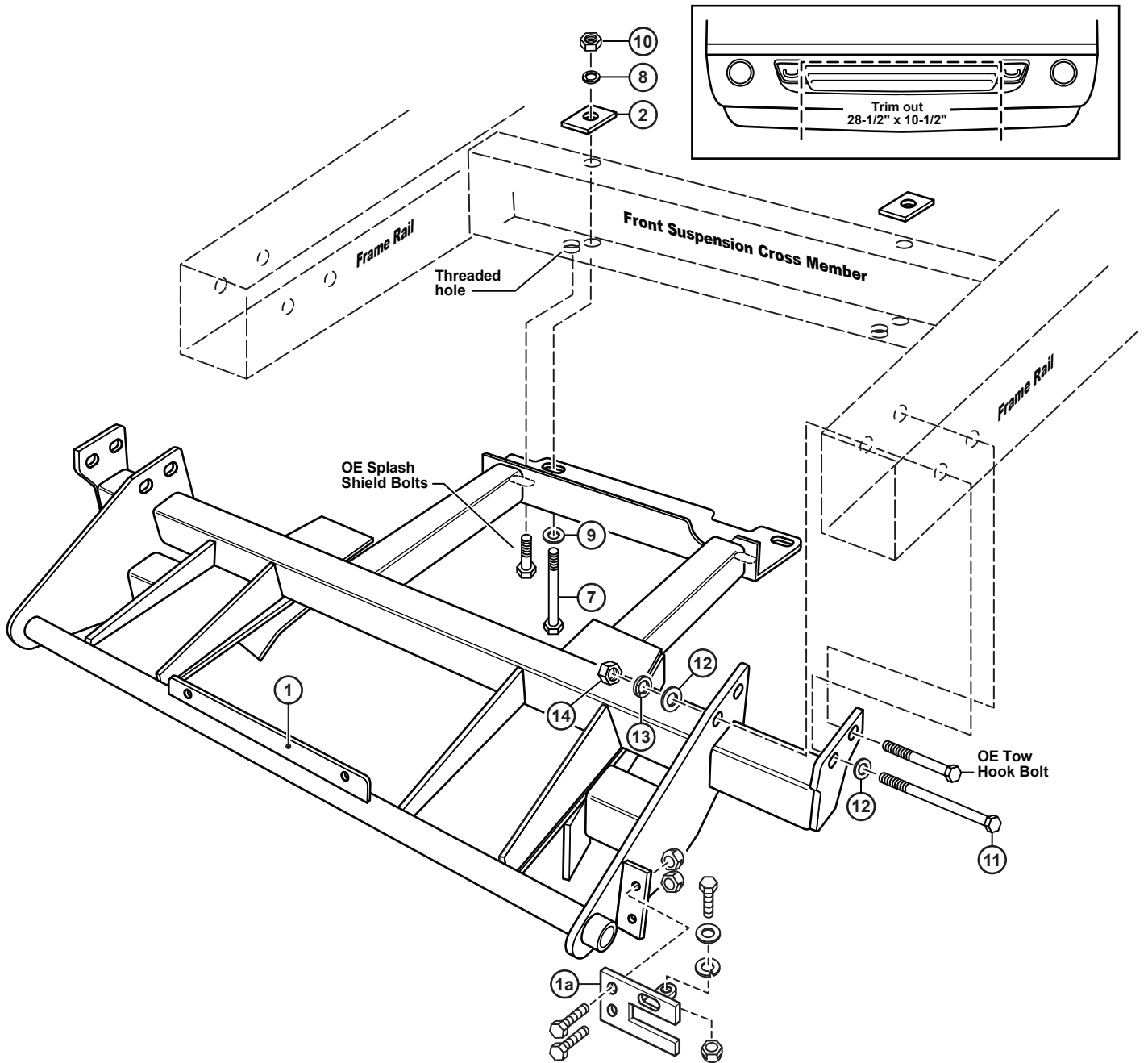


WARNING

It is highly recommended that front "helper springs", "airshocks", or other similar devices be installed onto this vehicle to prevent the front suspension from "bottoming out" while carrying a snow plow.

Vehicle must be properly "ballasted" by placing ballast weight behind the centerline of Rear Axle so that no more than 62% of the total weight of the Vehicle, Snow Plow, Driver, Ballast weight, (and any cargo) is placed on the Front Axle while at the same time not exceeding the Gross Vehicle Weight Rating and Front or Rear Gross Axle Weight Ratings.

1FK40 Mounting



Curtis Industries, LLC. reserves the right to change product design or specifications without notice or liability. Curtis Snow Plows and Truck equipment should only be used on vehicles equipped with the manufacturer's Snow Plow preparation package. Snow Plowing without the original snow plow preparation package may damage your vehicle and the added weight of the equipment may impair the operation and control of the vehicle.

1FK40: 2006 - GM1500 Truck & Tahoe / Yukon 1500 4x4

Mounting Kit Installation Instructions

1. VEHICLE PREPARATION

- (1a.) Temporarily remove the vehicle's plastic front fascia / grill / front bumper cover. Save all pieces and fasteners for reinstallation. Trim an approximately 28-1/2" long x 10-1/2" deep section out of the center of the lower plastic vehicle front fascia / grill / bumper cover. (This section to be removed should line up with the space between the frame rails and up to the bottom surface of the steel bumper).
- (1b.) Remove and save the metric nuts and bolts holding the tow hooks to the frame rails. (Leave the tow hooks in place inside the vehicle boxed frame rails). Remove and save the metric bolts holding the plastic splash shield to the front suspension cross member and front round tube cross member. Remove the plastic splash shield, (it will not be reinstalled with the mounting frame (1) in place).



NOTE

All fasteners should remain loose or "finger tight" until all components have been attached to Vehicle or installation instructions specify tightening.

IMPORTANT

If the plow mounting frame is ever removed from the vehicle, the plastic splash shield should be reinstalled back onto the vehicle using the original fasteners.

2. MOUNTING FRAME

- (2a.) Lift the mounting weldment (1) up onto the vehicle frame with the inner front vertical ears between the frame rails, the outer vertical ears outside the frame rails and with the rear cross angle up against the bottom surface of the front suspension cross member. Line up the front holes in the vertical ears with the front horizontal tow hook bolt holes and attach using 12mm x 1.75mm x 130mm bolts (11) with 12mm flat washer (12) through the outer ears, frame rails, tow hooks and inner ears on each side. Install 12mm flat washers (12), 12mm lock washers (13), and 12mm x 1.75 nuts (14) onto the 12mm x 1.75 x 130mm bolts (11).
- (2b.) Reinstall the short original equipment metric tow hook bolts through the vertical ears, frame rail flange and into the threaded holes in the tow hooks. Reinstall two of the original equipment metric splash shield bolts through the front slotted holes in the rear angle of the mounting frame (1) into the threaded holes in the front suspension cross member. Insert a 5/8"-11 x 7" bolt (7) and 5/8" flat washer (9) up through each rear slotted hole in the rear angle of the mounting frame (1) and through the holes in the lower and upper front suspension cross member. Place a bolting bar (2) over the threaded end of each bolt (7). Fasten using 5/8" lock washers (8) and 5/8"-11 Nuts (10).

3. TIGHTENING

- (3a.) Make sure the mounting frame is held tight against the bottom surface of the frame rails and front suspension cross member and that the bolting bars (2) are across the width of the front suspension cross member.
- (3b.) Tighten all original equipment and additional fasteners at this time being careful to not over tighten the 5/8" fasteners and crush the front suspension cross member or strip any threaded fasteners.

4. ORIGINAL EQUIPMENT PARTS

- (4a.) Reinstall the vehicle's plastic front fascia / grill / bumper cover using the original equipment fasteners. The plastic splash shield will not be reinstalled with the mounting frame in place.
- (4b.) The front license plate can be installed to the bracket on the front round bar of the mounting frame using 1/4"-20 x 3/4" bolts (3), 1/4" flat washers (4), 1/4" lock washers (5) and 1/4"-20 nuts (6).

5. FINAL ADJUSTMENT AND INSPECTION

Inspect the mounting attachment bolts to be certain that they are all in place and that they are all tight.

6. OPTIONAL PLUG MOUNT BRACKET INSTALL



NOTE

Install the Plug Mount Bracket if the harness will be mounted on the frame kit, otherwise, the harness may be routed through the grill, bumper, etc.

Using (2) 10-32 x 3/4" hex bolts and nylon locknuts, fasten the Plug Mount Bracket to the Plug Mount Bracket Mounting Tab located on the drivers side of the frame kit receiver. The included 8-32 hardware is used for mounting the hi-amp battery leads to the Plug Mount Bracket, if used.

