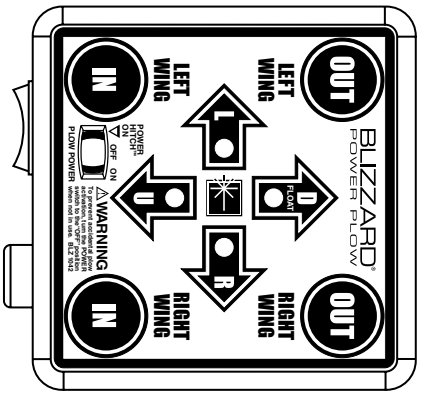
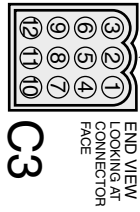


PIN NO.	COLOR	FUNCTION	AWG
1	RED/WHITE	RIGHT EXTEND	20
2	RED/BLACK	RIGHT RETRACT	20
3	RED	SWITCH 12 VOLT +	18
4	ORANGE	FLOAT	20
5	BLUE/WHITE	LEFT EXTEND	20
6	BLUE/BLACK	LEFT RETRACT	20
7	BLACK	GROUND	20
8	WHITE	LIFT	20
9	BROWN	PUMP SOLENOID	18
10	PINK/BLACK	12 (+) DC FUSED	20
11	GREEN	RIGHT ANGLE	20
12	BLUE	LEFT ANGLE	20

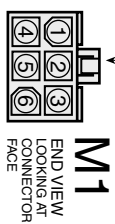


POWER FLOW TOUCH PAD
CONTROL LABEL (BLZ 1042)
BLIZZARD P/N 63057 REV B

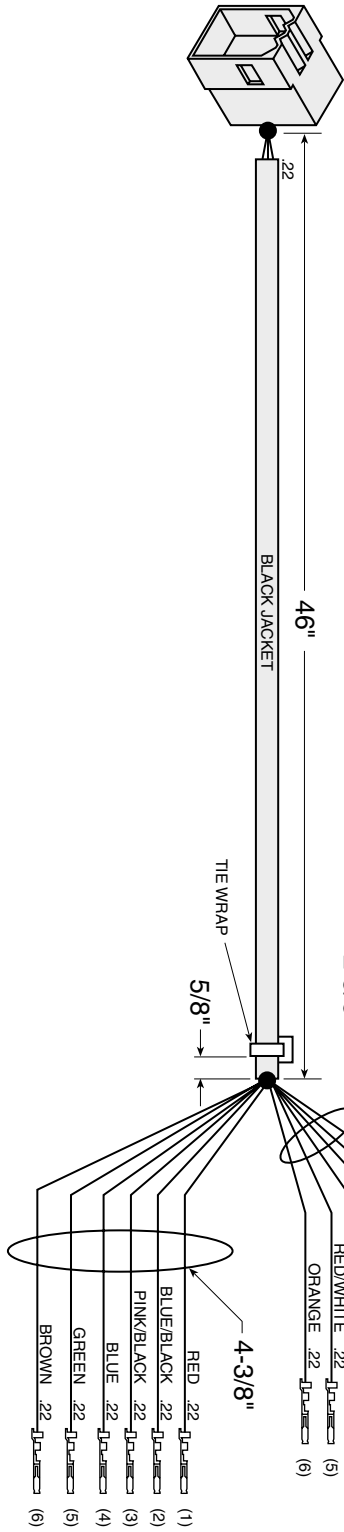
PIN NO.	COLOR	FUNCTION
1	RED/BLACK	RIGHT WING EXTEND
2	BLUE/WHITE	LEFT WING EXTEND
3	BLACK	GROUND (-)
4	WHITE	LIFT
5	RED/WHITE	RIGHT WING RETRACT
6	ORANGE	DOWN



END VIEW
LOOKING AT
CONNECTOR
FACE
C3



END VIEW
LOOKING AT
CONNECTOR
FACE
M1



END VIEW
LOOKING AT
CONNECTOR
FACE
M2

PIN NO.	COLOR	FUNCTION
1	RED	POSITIVE (+)
2	BLUE/BLACK	LEFT WING RETRACT
3	PINK/BLACK	12 (+) DC FUSED
4	BLUE	LEFT
5	GREEN	RIGHT
6	BROWN	PUMP SOLENOID

CONTROL STATION (MODELS 810 & 8611)
TOUCH PAD VERSION (2003)
P/N 62141

• NOT DRAWN TO SCALE
• UNLESS OTHERWISE SPECIFIED ALL DIMENSIONS IN INCHES
VENDOR DWG#: 90-8351-05 REV/B