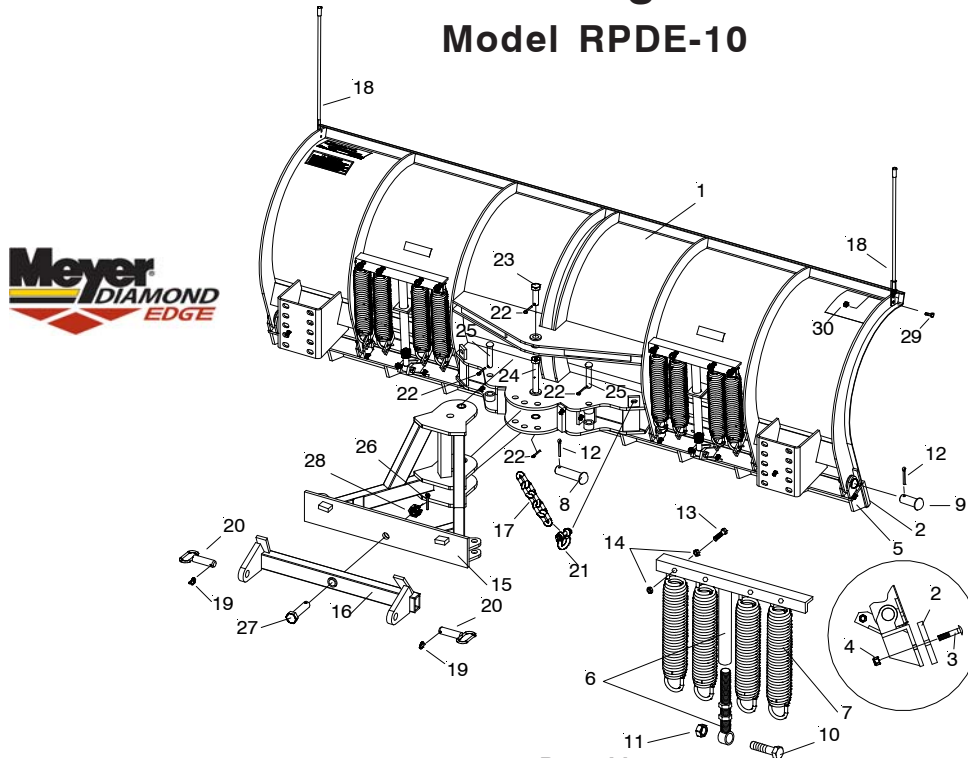


Parts & Installation Instructions

Road Pro Diamond Edge Steel Moldboard

Model RPDE-10



Parts List

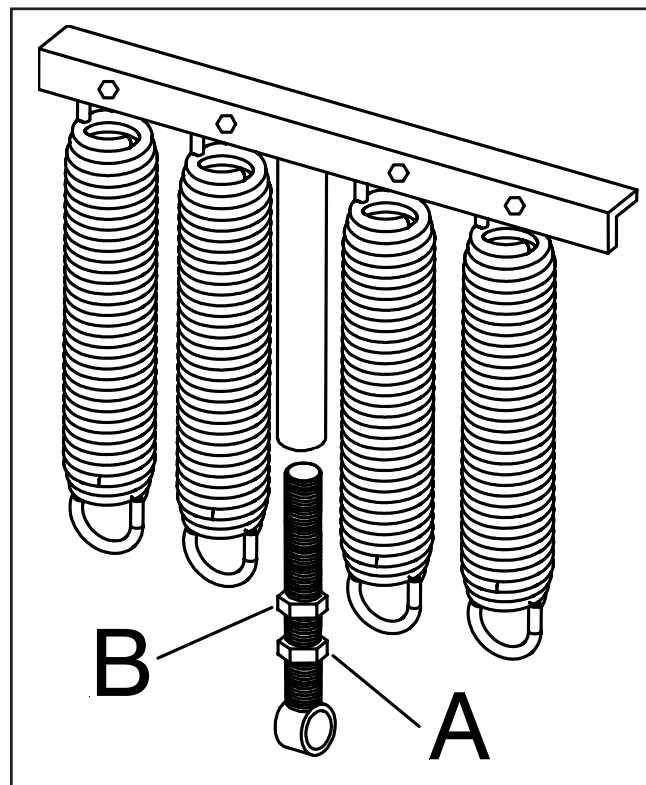
Item	Part No.	Qty.	Description
1	84200	1	Moldboard Assembly
	08195	1	• Cutting Edge Kit
2	84152	2	•• Cutting Edge
	08127	1	••• Hardware Bag Cutting Edge
3	21960	10	••• Bolt C 5/8-11 x 2-1/4" Gr. 8
4	20309	10	••• Locknut 5/8-11
5	84074	2	• Trip Edge Weldment
6	84137	2	• T-Bar Assembly
7	07238	8	• Trip Spring
8	811000003009	1	• Pin 1-3/16" Dia.
9	811000003003	6	• Pin 1-3/16" Dia.
10	20146	2	• Bolt 5/8-11 x 3-1/4" Gr. 5
11	20309	2	• Locknut 5/8-11
12	20420	7	• Cotter Pin 1/4 x 2"
13	20141	8	• Bolt H 5/8-11 x 2" Gr. 5
14	20318	16	• Locknut 5/8-11
15	81027	1	RPDE Push Frame Front
	81505	1	RPDE Common Attaching Kit
16	81028	1	• RPDE Push Frame Rear
17	22289	1	• 3/8 x 64" Lift Chain Gr. 70
18	811000095	2	• Plow Marker
	08795	1	• Hardware Bag
19	22083	2	•• Lynch Pin
20	19005	2	•• Pin - Yellow Handle
21	22278	2	•• Anchor Shackle w/Safety Pin
22	20420	4	•• Cotter Pin 1/4 x 2"
23	22331	1	•• Pivot Bolt 1 x 3-5/16"
24	22333	1	•• Pivot Bolt 1 x 6-5/8" w/Grease Fttg.
25	22334	2	•• Pin 1 x 6-1/16"
26	20435	1	•• Cotter Pin 5/16 x 2-1/2"
27	22329	1	•• 1-1/4 - 7 x 5" Pivot Bolt Push Frame
28	22330	1	•• 1-1/4 - 7 Slotted Hex nut
29	20027	4	•• Bolt H 5/16-18 x 1 Gr. 2
30	20304	4	•• Locknut 5/16-18

Parts indented are included in the assembly under which they are indented.

Meyer products' reserves the right, under its continuing product improvement program, to change construction or design details, specifications and prices without notice or without incurring any obligation.

CAUTION: CHECK THE TRIPEDGE ADJUSTMENT AT THIS TIME.

- A. THE SPRINGS ARE PROPERLY ADJUSTED WHEN A PIECE OF PAPER CAN BE PLACED BETWEEN EACH COIL.
- B. IF THE TRIPEDGE SPRINGS NEED ADJUSTMENT, LOOSEN THE BOTTOM LOCK NUT (A) ON BOTH SPRING ASSEMBLIES. ROTATE THE TOP NUT (B) UNTIL THE SPRINGS ARE PROPERLY ADJUSTED.
- C. BE SURE TO TIGHTEN THE BOTTOM LOCK NUT SECURELY ON BOTH ASSEMBLIES TO THE TOP NUT TO PREVENT LOOSENING OF THE ASSEMBLIES.



Spring Assembly