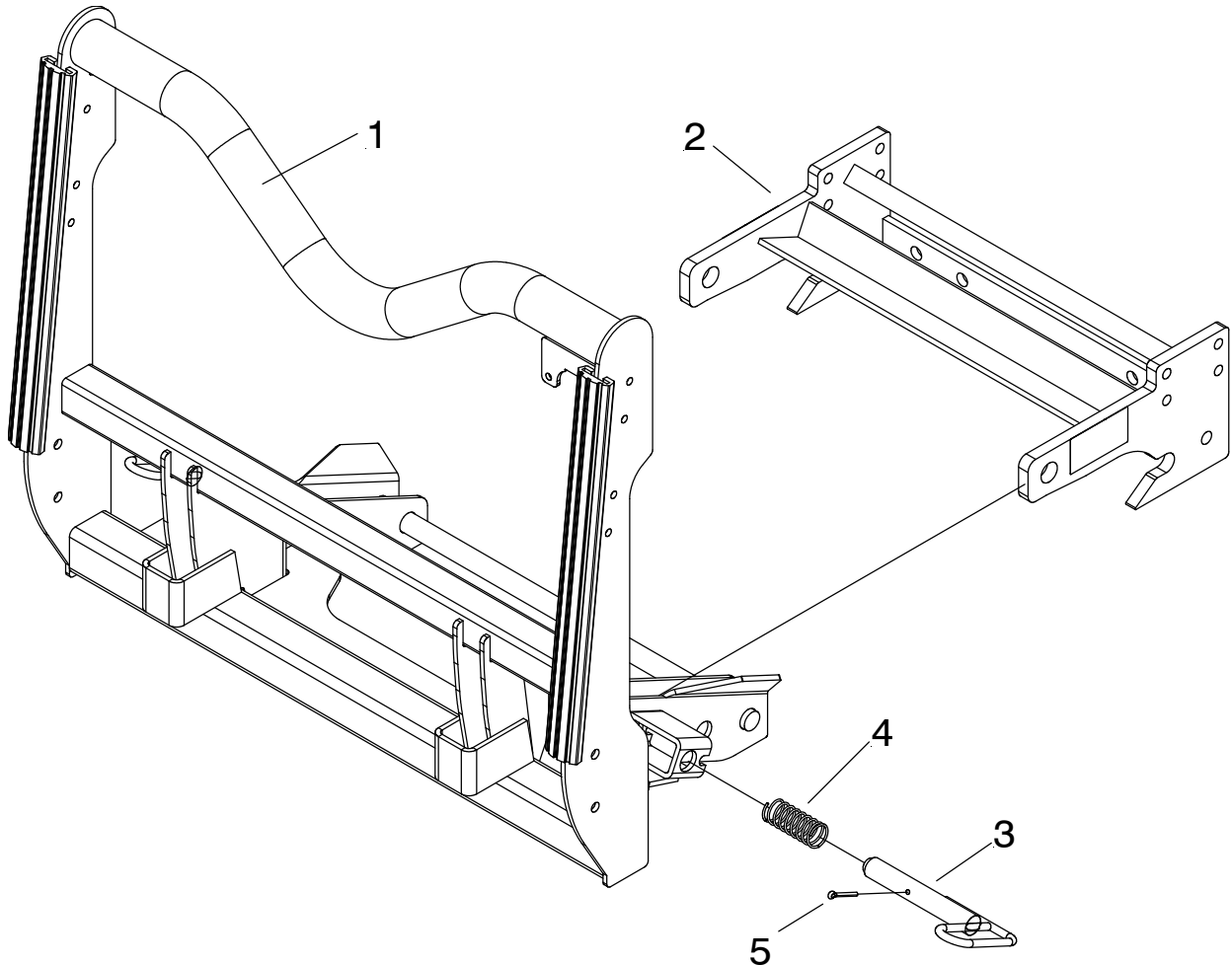


PARTS & INSTALLATION INSTRUCTIONS

E-Z MOUNT XPRESS™ LIFT FRAME

used with PLUS MOUNTING (CLF)



PARTS LIST

Item	Part No.	Qty.	Description
1	16560	1	E-Z Mount Xpress™ CLF Assembly
	10075	1	• Lift Frame
	16561	1	• E-Z Mount Xpress™ Clevis Carton
2	19370	1	•• E-Z Mount Plus™ Clevis Frame
	08286	1	•• MOUNTING HARDWARE BAG
3	11859	2	••• Blue Handle Pin
4	814000005	2	••• Spring
5	20406	2	••• Cotter Pin 3/16 x 1-1/2"

Parts indented are included in the carton, bag or assembly under which they are indented.

Meyer Products LLC reserves the right, under its continuing product improvement program, to change construction or design details, specifications and prices without notice or without incurring any obligation.

Meyer Products LLC
 18513 Euclid Ave. • Cleveland, Ohio 44112-1084
 Phone 486-1313 (Area Code 216)
 www.meyerproducts.com • email info@meyerproducts.com

GENERAL INFORMATION

CAUTION: Always disconnect battery before beginning installation.

DO NOT BURN holes or **WELD** vehicle frame. This may cause frame failure.

After first use, re-tighten all mounting bolt connections to specified torque. All mounting bolt connections to be checked periodically for tightness.

Locknuts are furnished **DO NOT** tighten bolts and nuts until installation is complete (unless otherwise specified), then be sure to tighten all attaching parts per specified torque chart.

NOTE: It is important that the Meyer harness, all wires from the Meyer light switch, and all other electrical wires be routed around hot or moving engine parts, and any sharp metal. Protection must be provided to guard against wire damage at these points. All excess or loose wires must be neatly secured using wire ties.

Check contents against the parts list to determine all are correct and included, and also to familiarize yourself with them.

SAFETY PRECAUTIONS should be used when **Hydraulic Unit is in OPERATION** and plow is in a **RAISED** position. **Lower plow to ground when vehicle is PARKED.**

OVERHAUL and **SERVICE INFORMATION** are covered on separate instructions.

Follow these instructions explicitly. Warranty does not apply to a Meyer product which has been negligently or improperly assembled or installed.

INSTALLATION INSTRUCTIONS

- A. Assemble clevis frame (1) to vehicle per separate Mounting Carton Instructions.
- B. Assemble Blue Handle Pin (3) to lift frame (1) by inserting the Blue Handle Pin (3) through the outer lift frame plates, through the center of the spring (4). At this time align the small blue leg on the handle through the notch on the outermost plate. Compress the spring (4) slightly with your fingers and insert the 3/16" x 1-1/2" Cotter Pin (5) through the small hole towards the center of the pin. With cotter pin (5) fully inserted, pull the blue handle until the spring is fully compressed and rotate the handle one full turn to bend the cotter pin in place. Realign the small blue leg with the notch on the outermost plate to lock in place. Repeat assembly process until both pins are assembled. **Note: Lubricate the stainless steel pins and Lift Frame bearing surfaces with chassis grease or anti-seize lubricant periodically for easier disengagement of pins.**
- C. Attach lift frame (1) to clevis frame (2) locate and pull out on the Blue Handled Pins and twist them slightly to the right or left so that the small leg of blue handle is resting on the outer plate, disengaging the pin. Align fixed pins Lift Frame (1) to notched hole on Clevis Frame (2) Align Blue Handle Pins with the holes located on the clevis frame (1). Twist the Blue Handle Pins so that the small leg realigns with the slot, engaging the pin. The spring loaded pin should snap into place locking the lift frame to the clevis frame.
- D. Install hydraulic system and light system per separate instructions.
- E. Pre-Assemble Moldboard Assembly per separate instructions.