

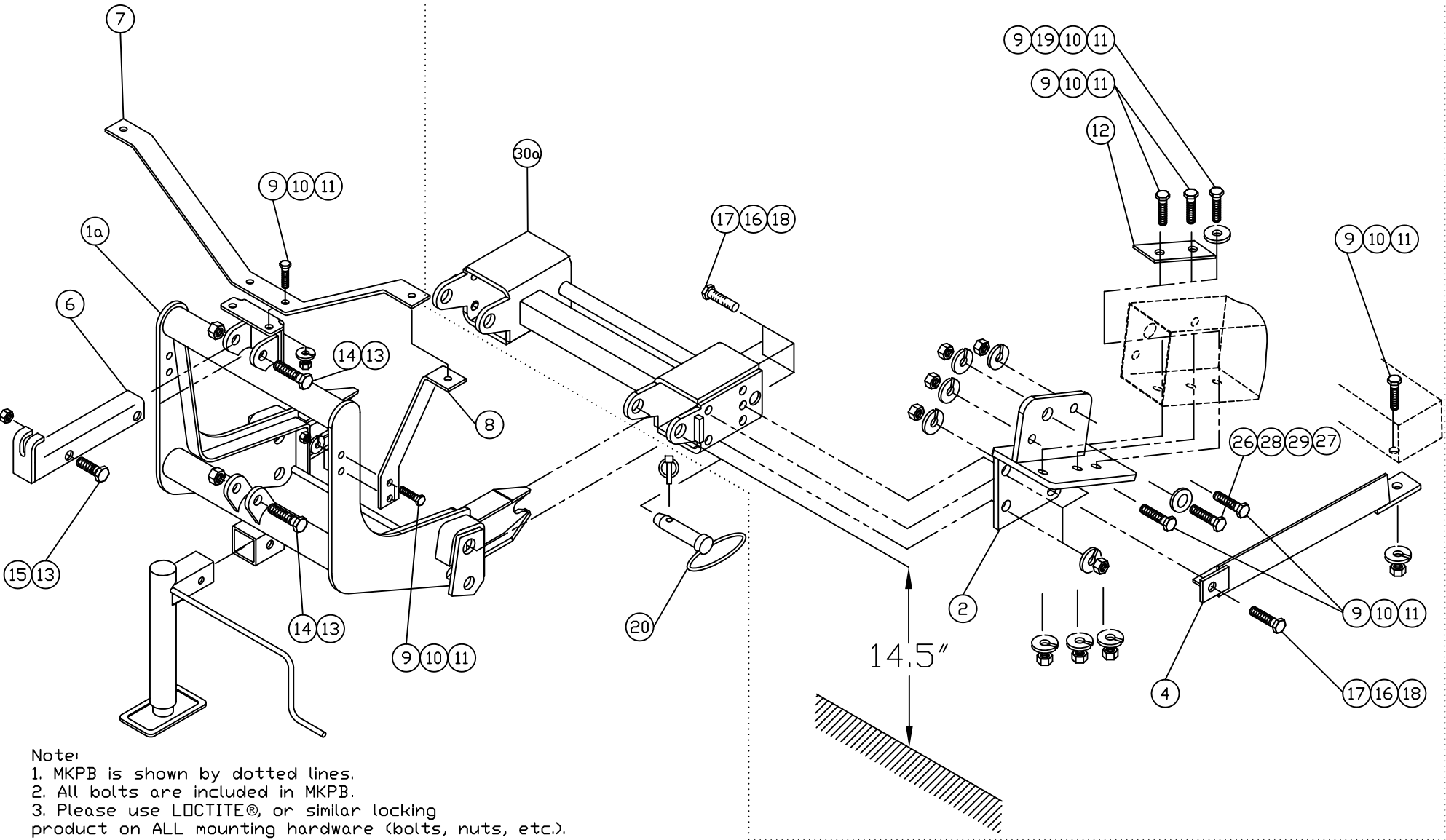
MOUNTING KIT

52404-MKPB

C3500 Classic 4x2 1991-2000

Note: For the snowplow lights this kit requires: 800067 or 800037AXV Light kit, and Adapter kit 767054 (vehicle's headlamp bulb H9005/H9006) - **may be required**

MOUNTING KIT 52404-MKPB-QLII



Note:
 1. MKPB is shown by dotted lines.
 2. All bolts are included in MKPB.
 3. Please use LOCTITE®, or similar locking product on ALL mounting hardware (bolts, nuts, etc.).

Mounting kit 52404-MKPB								
Item	Part #	Description	MKPB	MKPB-QLII	QL-MKB	QLII-MKB	QLII-HI	QLII-HI-DLC
1*	52162-C	Lift Frame			1			
1a	53170-D-GA	Lift Frame, QUIK*LINK ® II Galvanized				1		
1b*	53171-D-GA	Lift Frame, QUIK*LINK ® II-HI-boy Galvanized					1	
2	52406-01-C	Mounting Bracket Driver Side	1					
3*	52406-02-C	Mounting Bracket Curb Side	1					
4	52410-01-B	Thrust Arm Driver Side	1					
5*	52410-02-B	Thrust Arm Curb Side	1					
6	50069-C-GA	Lift Channel Galvanized				1		
6a*	52612-B-GA	Lift Channel (2" cylinder) Galvanized						1
7	52209-B-GA	Light Antler Galvanized				1		
8	52208-B-GA	Light Brace Galvanized				2		
9	HH-00972-090	½"x1.1/2" Bolt	18					
10	HH-00457-001	½" Lock washer	18					

Arctic Equipment Manufacturing Corporation
 Mounting kit 52404-MKPB

52404-MKPB R07
 INST0033

Mounting kit 52404-MKPB								
Item	Part #	Description	MKPB	MKPB-QLII	QL-MKB	QLII-MKB	QLII-HI	QLII-HI-DLC
11	HH-00460-002	½" Hex Nut		18				
12	52064-A	Spacer		2				
13	HH-00973-007	¾" Thin Collar Locknut		3				
14	HH-00972-153	¾"x3.1/2" Bolt		2				
15	HH-00972-149	¾"x2.1/2" Bolt		1				
16	HH-00457-003	5/8" Lock washer		8				
17	HH-00972-131	5/8" x 2 1/4" Bolt		8				
18	HH-00460-001	5/8" Hex Nut		8				
19	HH-00341-006	½" Flat washer		2				
20	WA-34704-M	Mounting Pin, QLI, Ass'y			2			
20a	52348-M	Mounting Pin, QLII, Ass'y					2	
22*	HH-00293-006	1/4"x1" Bolt		4				
23*	HH-00457-006	1/4" Lock washer		4				
24*	HH-00341-002	1/4" Flat washer		4				
25*	HH-00294-001	1/4" Hex Nut		4				
26	HH-00972-146	¾"x1.3/4" Bolt		2				

Mounting kit 52404-MKPB								
Item	Part #	Description	MKPB	MKPB-QLII	QL-MKB	QLII-MKB	QLII-HI	QLII-HI-DLC
27	HH-00460-007	3/4" Nut	2					
28	HH-00341-009	3/4" Flat washer	2					
29	HH-00457-008	3/4" Lock washer	2					
30*	52166-C	Spreader Bar	1					
30a	52363-C	Spreader Bar QLII		1				
31*	50999-B	Blade guides			2			

QUIK*LINK is a trademark of Arctic Equipment Manufacturing Corporation

Note: * These items are not shown on the drawing.

GENERAL

Customer must be aware of following:

Arctic Equipment Manufacturing Corporation (Arctic) does not assume liability for damage to your motor vehicle resulting from the attachment or use of an Arctic snowplow. The purchaser assumes all vehicle risk associated with the attachment and operation of this snowplow.

The Arctic snowplow you purchase must be used only on vehicles equipped with the manufacturer’s snow plow preparation package. Snow plowing without the original plow preparation package may damage your vehicle. The added weight may impair the operation and control of your vehicle. Snow plowing with a vehicle not recommended for that purpose by the manufacturer may void your new vehicle warranty. If your vehicle is not equipped with an original snow plow preparation package, additional equipment may be necessary before snow plowing. Please consult your vehicle and snowplow dealers prior to the purchase and installation of the snowplow. The installation of such parts however is not a full substitute for the original equipment snowplow preparation package.

Before drilling any holes in the firewall or frame, move brake lines, fuel lines and/or electrical wiring from the path of the drill. Brake and fuel lines must also be clear of any fasteners.

All bolts should be installed from the inside of the truck frame so that the lock washers and nuts are accessible for re-tightening.

If a slotted hole in the truck frame is utilized, then a flat washer must be used under the bolt head. If a flat washer is used under a lock washer use LOCTITE #242.

General order of installation:

- install all components (mounting bracket, thrust arm and spreader bar) and all fasteners finger tight (snug) through existing holes,
- drill necessary holes and
- tighten all hardware.

After first use, re tighten all mounting bolts, thereafter check mounting bolt tightness periodically.



Before proceeding, read instructions carefully and familiarize yourself with the components and hardware.

INSTALLATION INSTRUCTIONS

1. DO NOT REMOVE BUMPER, but remove splash guard and tow hooks. Front grill may be removed for easier access of lights.
2. Fasten mounting brackets (2) & (3) to vehicle frame using 3/4" x 1 3/4" bolts (26), flat washer (28), lock washer (29) and hex nut (27).
3. Locate the spacer (12) inside the truck frame, and fasten mounting bracket (2) (3) to the spacer with 1/2" x 1 1/2" bolt (9), lock washer (10) and nut (11) through the frame. Also install 1/2" x 1 1/2" bolt (9), flat washer (19), lock washer (10) and nut (11) through third hole in the frame. Snug the fastener so that the mounting bracket is tight up against the truck frame.
4. Install thrust arm to the mounting bracket using 5/8" bolt (17), lock washer (16) and nut (18). Fasten thrust arms (4) & (5) to the truck cross member, using 1/2" x 1 1/2" bolt (9), lockwasher (10) and nut (11). NOTE: Hole in cross member needs to be

drilled using 17/32" bit.

5. Drill two 17/32" holes in the truck frame using the holes in the mounting bracket (2) & (3) as a guide. Install 1/2"x1.1/2" bolt (9), lock washer (10) and hex nut (11).
3. Fasten spreader bar (30a) using 5/8"x2 1/4" bolt (17), lock washer (16) and hex nut (18).
7. Torque all fasteners according to torque chart.
8. Install lift frame (1a). Slide inside of spreader bar (30a). Insert mounting pin (20a) in the holes of the spreader bar.
9. Install light antler (7) and light braces (8) using 1/2" x 1 1/2" bolts (9), 1/2" lock washers (10) and 1/2" hex nuts (11). Install lights so that the light mounting stud goes through both antler (7) and the brace (8). Tighten all light mounting hardware.
10. Install lift channel (6) and front mount pump (from hydraulic kit) or hydraulic cylinder to lift frame (1a)(1b) using 3/4" x 3 1/2" bolts (14) and 3/4" lock nuts (13). Use 3/4" x 2 1/2" bolts (15) and 3/4" lock nuts (13) to attach lift channel (6) to front mount pump or hydraulic cylinder. Do not over tighten this assembly as it must be able to pivot.
11. Use 1/4"x1" bolt (22), 1/4" flat washer (24), 1/4" lock washer (23) and 1/4" hex nut (25) to fasten blade guides to plow.
12. Return any unused items to the customer so that the vehicle can be returned to its original condition if the snowplow is removed. If the customer wishes to have the splash pan reinstalled it must be trimmed to clear the spreader bar.
13. See separate installation instructions for the hydraulic power unit, wiring and controls.

TORQUE CHART (FT. L.B.)		
SIZE	GRADE 5 BOLT 	GRADE 8 BOLT 
1/4 - 28	8	11
5/16 - 24	15	22
3/8 - 24	28	40
7/16 - 20	44	63
1/2 - 20	69	97
5/8 - 18	138	195
3/4 - 16	241	341
<i>Note:</i> Torque values are for plated bolts only		