

FRONT END VIEW

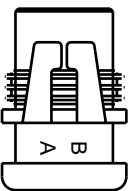
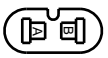
10" +1" to -1/2"

5" +1/2" to -1/4"

MOLD COLOR (GRAY)

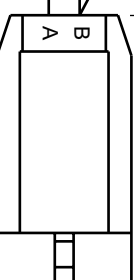
FRONT END VIEW

GRAY LOW BEAM



WHITE/RED W/R-4
LT. GREEN/RED LT. G/R

WHITE/RED
WHITE/RED
LT. GREEN



B1

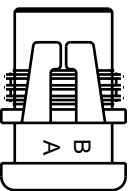
A = LOW BEAM (LT. GREEN/RED)
B = COMMON (WHITE/RED)

3" +1/2" to -1/4"

A1

A = LOW BEAM (LT. GREEN)
B = COMMON (WHITE/RED)

BLACK HIGH BEAM



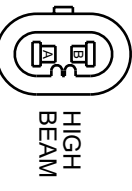
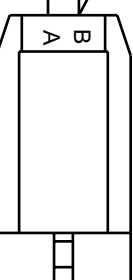
WHITE/RED W/R-1
YELLOW/RED Y/R

B2

A = HIGH BEAM (YELLOW/RED)
B = COMMON (WHITE/RED)

4" +1/2" to -1/4"

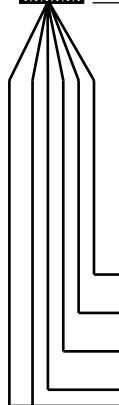
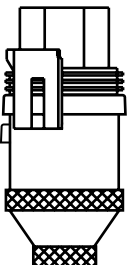
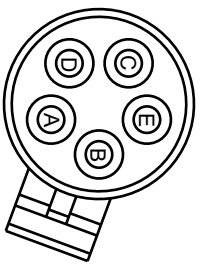
W/R-3 WHITE/RED
W/R-2 WHITE/RED
YELLOW



A2

A = HIGH BEAM (YELLOW)
B = COMMON (WHITE/RED)

END VIEW OF CONNECTOR



MOLD COLOR (BLACK)

HEADLIGHT ADAPTER

P/N 62013

HEADLIGHT CONNECTOR(S): HB3/HB4

HEADLIGHT DESCRIPTION: QUAD COMPOSITE HALOGEN

HEADLIGHT BULB NUMBER(S): H9005, H9006

• NOT DRAWN TO SCALE

• UNLESS OTHERWISE SPECIFIED ALL DIMENSIONS IN INCHES

VENDOR P/N & DWG: 95-2394-00 REV A (REF. M.P.M. 90-2018-00)

NOTE: THE SWITCH BETWEEN LOW AND HIGH BEAMS IS ON THE POSITIVE (POWER) SIDE OF THE HEADLIGHT BULB.