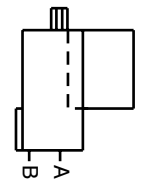
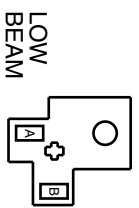
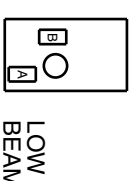


FRONT END VIEW



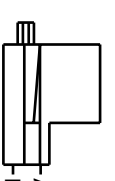
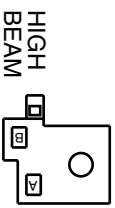
FRONT END VIEW



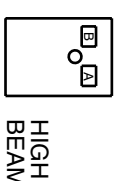
**B1** A = COMMON (WHITE/RED)  
B = LOW BEAM (LT. GREEN/RED)

**A1** A = COMMON (WHITE/RED)  
B = LOW BEAM (LT. GREEN)

FRONT END VIEW

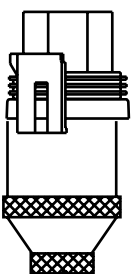
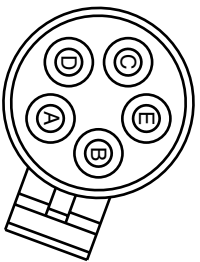


FRONT END VIEW



**B2** A = COMMON (WHITE/RED)  
B = HIGH BEAM (YELLOW/RED)

**A2** A = COMMON (WHITE/RED)  
B = HIGH BEAM (YELLOW)



MOLD COLOR (BLACK)

10" + 1" to -1/2"

5" + 1/2" to -1/4"

3" + 1/2" to -1/4"

4" + 1/2" to -1/4"

W/R-4  
LT. G/R  
W/R-1  
Y/R  
W/R-3  
W/R-2  
Y  
A  
B

**HEADLIGHT ADAPTER**

**P/N 62015**

HEADLIGHT CONNECTOR(S): LF/UF  
HEADLIGHT DESCRIPTION: QUAD LOW PROFILE RECTANGULAR HALOGEN  
HEADLIGHT BULB NUMBER(S): H4701, H4703

\* NOT DRAWN TO SCALE  
\* UNLESS OTHERWISE SPECIFIED ALL DIMENSIONS IN INCHES  
VENDOR P/N & DWG: 95-2335-00 REV A (REF M.P.M. 90-2019-00)