

PARTS & INSTALLATION INSTRUCTIONS

MEYER SNOW PLOW MOUNTING FOR 1979 WAGONEER, TRUCK and CHEROKEE JEEP VEHICLES

IMPORTANT NOTICE

End user must be given this instruction sheet prior to delivery of this snow plow.

The equipment you have purchased should only be used on vehicles equipped with the manufacturer's snow plow preparation packages. Snow plowing without the original snow plow preparation package may damage your vehicle and the added weight of the equipment may impair the operation and control of the vehicle. Snow plowing with a vehicle that the manufacturer does not recommend for that purpose may void your new warranty. If your vehicle is not originally equipped with the snow plow preparation package, additional parts may be necessary before snow plowing. Owners of these vehicles should consult their dealers before purchase or installation of such parts.

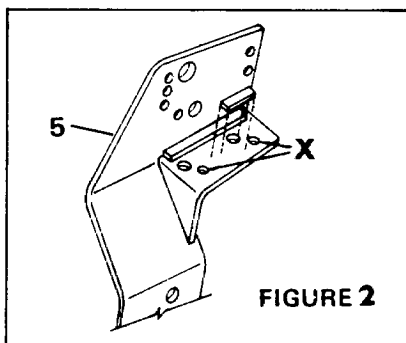
CAUTION: The installation, on any vehicle, of these parts is not a full substitute for the original equipment snow plow preparation package.

WARNING: Lift arm extends beyond bumper of vehicle. To minimize damage from a front-end collision. Lift arm should be removed from vehicle when snow plow is not in use.

INSTALLATION INSTRUCTIONS FOR

VEHICLE with optional front stabilizer bar

1. Unbolt the front stabilizer from the stabilizer brackets welded to the vehicle frame. Lower the stabilizer.
2. Burn off each stabilizer bracket within 3/8" of the bottom frame surface being careful not to damage the frame rails.
3. Knock the tack welded spacer bar off each Side Member as shown in Figure 2. Insert two 7/16 x 1-1/2 bolts (17) down through the exposed holes "X" and attach each stabilizer bracket to the bottom of the proper Side Member using 7/16 Locknuts (24).
4. Install the Side Member (5 & 6) as shown in Figure 1 making certain that the stabilizer bracket bolt heads do not contact the burned off bracket stubs preventing the Side Members from being bolted flush against the frame rail.



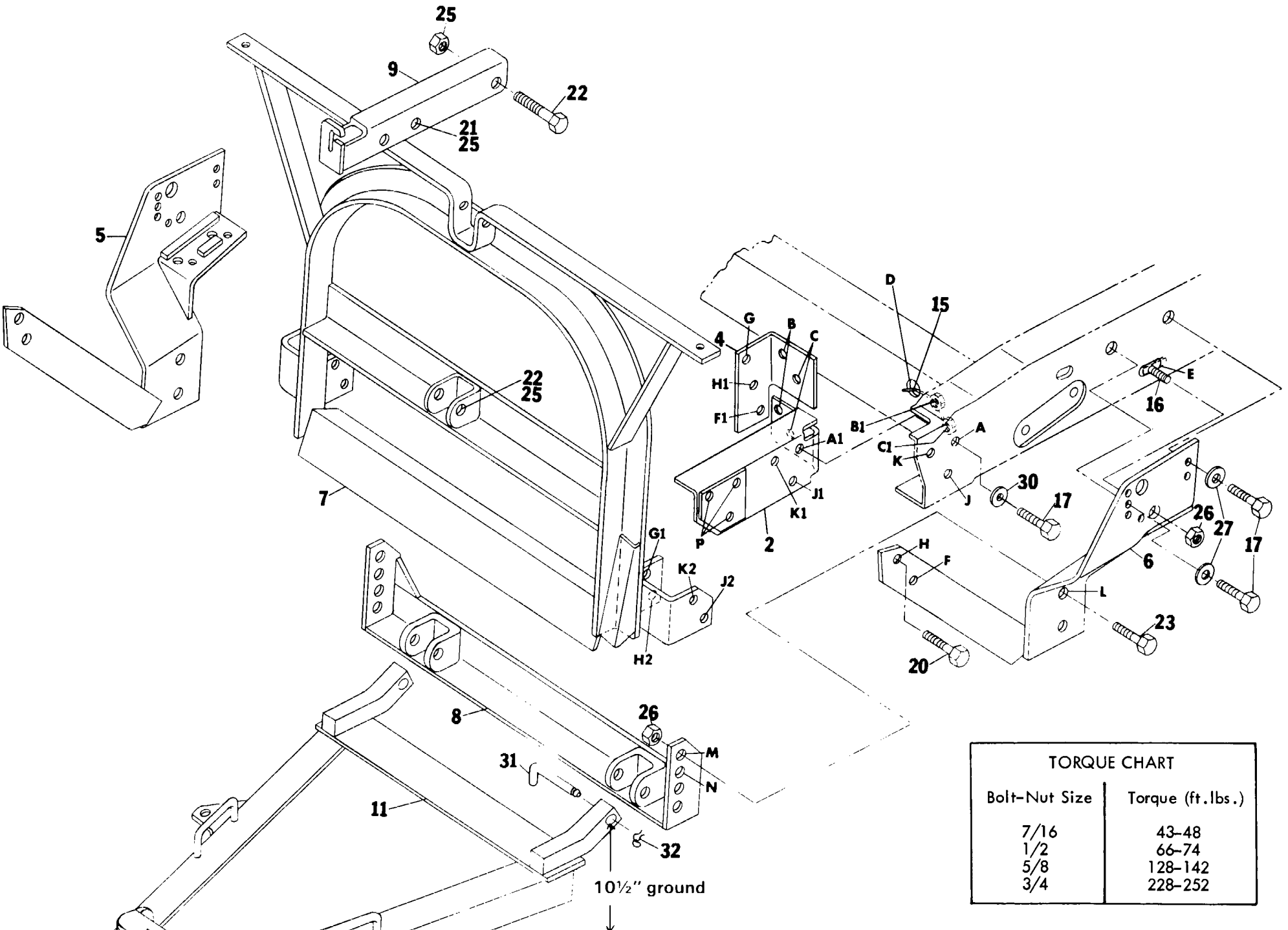
PARTS LIST

| ITEM | PART NO. | QTY. | DESCRIPTION |
|------|----------|------|--------------------------------|
| | 17071 | 1 | MOUNTING CARTON w/SAF |
| 1 | 10510 | 1 | • Bracket Bumper R.H. |
| 2 | 10511 | 1 | • Bracket Bumper L.H. |
| 3 | 10483 | 1 | • Bracket Frame L.H. |
| 4 | 10484 | 1 | • Bracket Frame R.H. |
| 5 | 10430 | 1 | • Side Member R.H. |
| 6 | 10429 | 1 | • Side Member L.H. |
| 7 | 10480 | 1 | • Lift Frame |
| 8 | 10431 | 1 | • Clevis Frame |
| 9 | 10514 | 1 | • Lift Arm |
| 10 | 10508 | 2 | • Gravel Guard |
| 11 | 13568 | 1 | • A-Frame |
| | 12326 | 1 | • Sector |
| | 07017 | 3 | • Trip Spring |
| | 08461 | 1 | • HARDWARE BAG |
| 14 | 10489 | 1 | •• Special Nut L.H. |
| 15 | 10490 | 1 | •• Special Nut R.H. |
| 16 | 14595 | 2 | •• Special Bolt |
| 17 | 20073 | 14 | •• Bolt H 7/16-14 x 1-1/2 |
| 18 | 20095 | 4 | •• Bolt H 1/2-13 x 1-1/2 |
| 19 | 20141 | 4 | •• Bolt H 5/8-11 x 2 |
| 20 | 20142 | 2 | •• Bolt H 5/8-11 x 2-1/4 |
| 21 | 20144 | 1 | •• Bolt H 5/8-11 x 2-3/4 |
| 22 | 20147 | 2 | •• Bolt H 5/8-11 x 3-1/2 |
| 23 | 20164 | 4 | •• Bolt H 3/4-10 x 2 |
| 24 | 20306 | 10 | •• Locknut 7/16-14 |
| 25 | 20309 | 9 | •• Locknut 5/8-11 |
| 26 | 20310 | 6 | •• Locknut 3/4-10 |
| 27 | 20328 | 4 | •• Lockwasher 7/16 |
| 28 | 20329 | 4 | •• Lockwasher 1/2 |
| 29 | 21398 | 10 | •• Self Tap Screw 1/4-14 x 3/4 |
| 30 | 20354 | 6 | •• Flat Washer 7/16 |
| | 08166 | 1 | • HARDWARE BAG |
| 31 | 09119 | 2 | •• Pivot Pin w/cotter pin |
| 32 | 11101 | 2 | •• Hinge Pin |
| | 21984 | 1 | •• Hair Pin Cotter |
| | 09122 | 1 | •• King Bolt w/nuts |
| | 09124 | 3 | •• Eye Bolt w/nuts |
| | 09916 | 1 | • Marker Kit |

Parts indented are included in the carton, bag or assembly under which they are indented.

NOTICE: Meyer Products assumes no responsibility for installations not made in accordance with these instructions.

Meyer Products reserves the right, under its continuing product improvement program, to change construction or design details, specifications and prices without notice or without incurring any obligation.



| TORQUE CHART | |
|---------------|------------------|
| Bolt-Nut Size | Torque (ft.lbs.) |
| 7/16 | 43-48 |
| 1/2 | 66-74 |
| 5/8 | 128-142 |
| 3/4 | 228-252 |

FIGURE 1

GENERAL INFORMATION

CAUTION: Always disconnect battery before beginning installation.

Check contents against the parts to determine all are correct and included.

Locknuts are furnished. All bolts are grade 5, all locknuts are nylon insert type. Do not tighten bolts and nuts until installation is complete (unless otherwise specified), then be sure to tighten all attaching parts per specified torque chart.

When ordering parts furnish Part No., Name and Description. Also furnish Vehicle Model and Year, Type of Hydraulic Unit and Plow Size.

After first use, retighten all mounting bolt connections to specified torque. All Mounting bolt connections to be checked periodically for tightness.

and Lockwashers (28) through hole "B", "B1", and "C", "C1". At hole "A" & "A1" attach with 7/16 x 1-1/2 Bolt (17), Flat Washer (30) and Locknut (24).

4. Insert Special Bolts (16) through slotted holes "E" in vehicle frame and attach Side Members (5 & 6) with 3/4 Locknuts (26). Bolt Side Members (5 & 6) to vehicle frame with 7/16 x 1-1/2 Bolt (17) and Lockwasher (27).
5. Attach Side Members (5 & 6) to Bracket Frame (3 & 4) by inserting 5/8 x 2" Bolts (19) through holes "F" and "F1" and secure with 5/8 Locknuts (25).
6. Attach the Lift Frame (7) to Bracket Frame (3 & 4) at holes "G" & "G1" with 5/8 x 2" Bolts (19) and Locknuts (25). Bolt the Lift Frame (7) Bracket Frame (3 & 4) and Side Members (5 & 6) by inserting a 5/8 x 2-1/4" Bolt (20) through holes "H", "H1", & "H2" and secure with 5/8 Locknuts (25).
7. Attach Lift Frame (7), Bracket Bumper (1 & 2) to vehicle side rail with 7/16 x 1-1/2" Bolt (17), Flat Washer (30) and Locknuts (24) at holes "J", "J1" & "J2", "K", "K1" & "K2".
8. Bolt Clevis Frame (8) to Side Members (5 & 6) with 3/4 x 2" Bolts (23) and Locknuts (26). (Wagoneer & Cherokee align holes "L" & "M", Jeep truck align holes "L" & "N").
9. Reinstall Front Bumper to Bracket Bumper (1 & 2) with original fasteners at holes "P".
10. Install Lift Arm (9) to Lift Frame (7) with 5/8 x 3-1/2 Bolt (22) and Locknut (25).
11. NOTE: Vehicles with fiber strip stapled to Body: Attach Gravel Guards (10) on top of the fiber strip. Vehicles without fiber strip, attach Gravel Guards (10) to bottom flange of body sheet metal. Drill 3/16" diameter holes in body and Gravel Guards (10) and attach from top with 1/4 x 3/4 Self Tapping Screws (29).
12. Before tightening Lift Frame Bolts, pull top of Lift Frame forward to take out the slack in the bolt holes. Tighten all bolts per specified torque chart.
13. Pre-assemble Moldboard Assembly, A-Frame (11), Sector, etc., per separate instructions.
14. Connect A-Frame (11) to Clevis Frame (8) with Hinge Pins and Spring Clips (31 & 32).
15. Hook A-Frame chain to Lift Arm (9) allowing sufficient slack to enable the Moldboard to follow ground contour while plowing.

INSTALLATION INSTRUCTIONS

1. Remove front bumper, retaining original parts and fasteners.
2. Place Bracket Bumper (1 & 2) inside of vehicle side rail, aligning holes "A" & "A1", "J" & "J1". Using hole C as a template, mark hole "C1". Remove Bracket Bumper (1 & 2) and drill 9/16 dia. hole ("C1").
3. Insert Special Nuts (14 & 15) at hole "D" and align with holes "B1" & "C1" in vehicle cross member. While holding Special Nuts (14 & 15) in position, attach Bracket Bumper (1 & 2), Bracket Frame (3 & 4) by inserting 1/2 x 1-1/2" Bolt (18)