

PARTS & INSTALLATION INSTRUCTIONS

MEYER EZ-SWEEP MOUNTING

1993 FORD RANGER & EXPLORER 4X4 VEHICLES

IMPORTANT NOTICE

Vehicles with Meyer Snow Plows or EZ-Sweeps installed may be so equipped as to meet vehicle manufacturers' specifications and recommended options. Most vehicle manufacturers insist that vehicles which are to be used for snow plowing be equipped with certain options and accessories, and it is so stated in vehicle manufacturer specifications for snow plow application.

WARNING: DO NOT INSTALL A SNOW PLOW ON A VEHICLE THAT IS NOT RECOMMENDED FOR SNOW PLOW APPLICATION BY THE VEHICLE MANUFACTURER. DOING SO MAY BE DANGEROUS AND WILL VOID THE MEYER / DIAMOND WARRANTY. PLEASE CONTACT YOUR VEHICLE MANUFACTURER, MEYER PRODUCTS, OR YOUR NEAREST AUTHORIZED MEYER OR DIAMOND DISTRIBUTOR IF YOU HAVE ANY QUESTIONS ABOUT APPLICATIONS.

Warning: Lift Arm extends beyond bumper of vehicle. To minimize damage from a front-end collision, Lift Arm should be removed from vehicle when Snow Plow is removed.

PARTS LIST

Item	Part No.	Qty.	Description
	18067	1	Mounting Carton
1	11435	1	• Clevis Frame
2	11440	1	• R.H. Side Plate
3	11441	1	• L.H. Side Plate
4	10514	1	• Lift Arm
5	11462	2	• Receiver Tube Caps
	08645	1	• Hardware Bag
6	11006	2	•• Hinge Pin
7	14595	4	•• Special Bolt 3/4"
8	20105	4	•• Bolt H 1/2-13 x 4" Gr. 5
9	20141	8	•• Bolt H 5/8-11 x 2" Gr. 5
10	20144	1	•• Bolt H 5/8-11 x 2 3/4" Gr. 5
11	20146	2	•• Bolt H 5/8-11 x 3-1/4" Gr. 5
12	20307	4	•• Locknut Esna 1/2-13
13	20309	11	•• Locknut Esna 5/8-11
14	20310	4	•• Locknut Esna 3/4-10
15	21984	2	•• Hair Pin Cotter
16	11275	1	Lift Frame (Tubular)
	16510	1	Pivot Bar - A-Frame Carton
17	13594	1	• A-Frame
	12216	1	• Pivot Bar
	08709	1	• A-Frame Stand Kit
	08704	1	•• Hardware Bag
	13591	1	•• King Bolt W/Grease Fitting
	20309	1	•• Locknut 5/8-11
20	11106	2	•• Hinge Pin
21	22083	2	•• Linch Pin
	07996	1	•• Cable Tie

Parts indented are included in the carton, bag or assembly under which they are indented. When ordering parts, furnish Part No., Name, and Description. Also furnish Vehicle Model and Year. Type of Hydraulic Unit and Moldboard Size.

Meyer Products LLC reserves the right, under its continuing product improvement program, to change construction or design details, specifications and prices without notice or without incurring any obligation.

GENERAL INFORMATION

CAUTION: Always disconnect battery before beginning installation.

DO NOT BURN holes or **WELD** vehicle frame. This may cause frame failure.

After first use, retighten all mounting bolt connections to specified torque. All mounting bolt connections to be checked periodically for tightness.

Locknuts are furnished **DO NOT** tighten bolts and nuts until installation is complete (unless otherwise specified), then be sure to tighten all attaching parts per specified torque chart.

NOTE: It is important that the Meyer harness, all wires from the Meyer light switch, and all other electrical wires be routed around hot or moving engine parts, and any sharp metal. Protection must be provided to guard against wire damage at these points. All excess or loose wires must be neatly secured using wire ties.

Check contents against the parts list to determine all are correct and included, and also to familiarize yourself with them.

SAFETY PRECAUTIONS should be used when **Hydraulic Unit is in OPERATION** and EZ-Sweep is in a **RAISED** position. **Lower plow to ground when vehicle is PARKED.**

OVERHAUL and **SERVICE INFORMATION** are covered on separate instructions.




Follow these instructions explicitly. Warranty does not apply to a Meyer product which has been negligently or improperly assembled or installed.

IMPORTANT NOTICE

EZ-Sweep installation on this vehicle:

If the front axle loading exceeds either 62 percent of the empty truck total weight, or the front GAWR, ballast compensating weight must be permanently attached at the rear of the truck to bring front axle weight within weight specifications.

TORQUE CHART FOOT LBS.

Bolt Nut Size	Gr. 	Gr. 	Gr. 
1/4 - 20	4 - 5		
5/16 - 18	9 - 11		
3/8 - 16	17 - 20	26 - 29	
7/16 - 14		42 - 46	60 - 66
1/2 - 13		64 - 72	90 - 100
5/8 - 11		127 - 141	179 - 198
3/4 - 10		227 - 251	

INSTALLATION INSTRUCTIONS

- A. Installation of this mounting requires removal or cutting of the front air dam to allow mounting clearance.

NOTE: If vehicle is equipped with optional fog lights, remove lights prior to installation and reinstall when installation is complete.

- B. Slot on both side of the vehicle frame, just above the torsion bar must be enlarged to 13/16" x 1-1/4".
- C. Attach rear of side plates (2&3) at slot in vehicle frame using 3/4" special bolts (7) and 3/4-10 locknuts (14).
- D. Attach front of side plates (2&3) to vehicle frame using 1/2-13 x 4" bolts (8) and 1/2-13 locknuts (12).
- E. Attach clevis frame (1) to side plates (2&3) using 5/8-11 x 2" bolts (9) and 5/8-11 locknuts (13). **Note: Attach clevis frame (1) to holes "C" in clevis frame side plates for Ranger installation and holes "D" for an Explorer installation.**
- F. Tighten all fasteners to their proper torque. Tighten bolts in the same order they were assembled to the vehicle. Reinstall bumper and connect fog lights after bolts are tight.

NOTE: Before tightening the fasteners, the clevis frame should be pushed back as far as possible

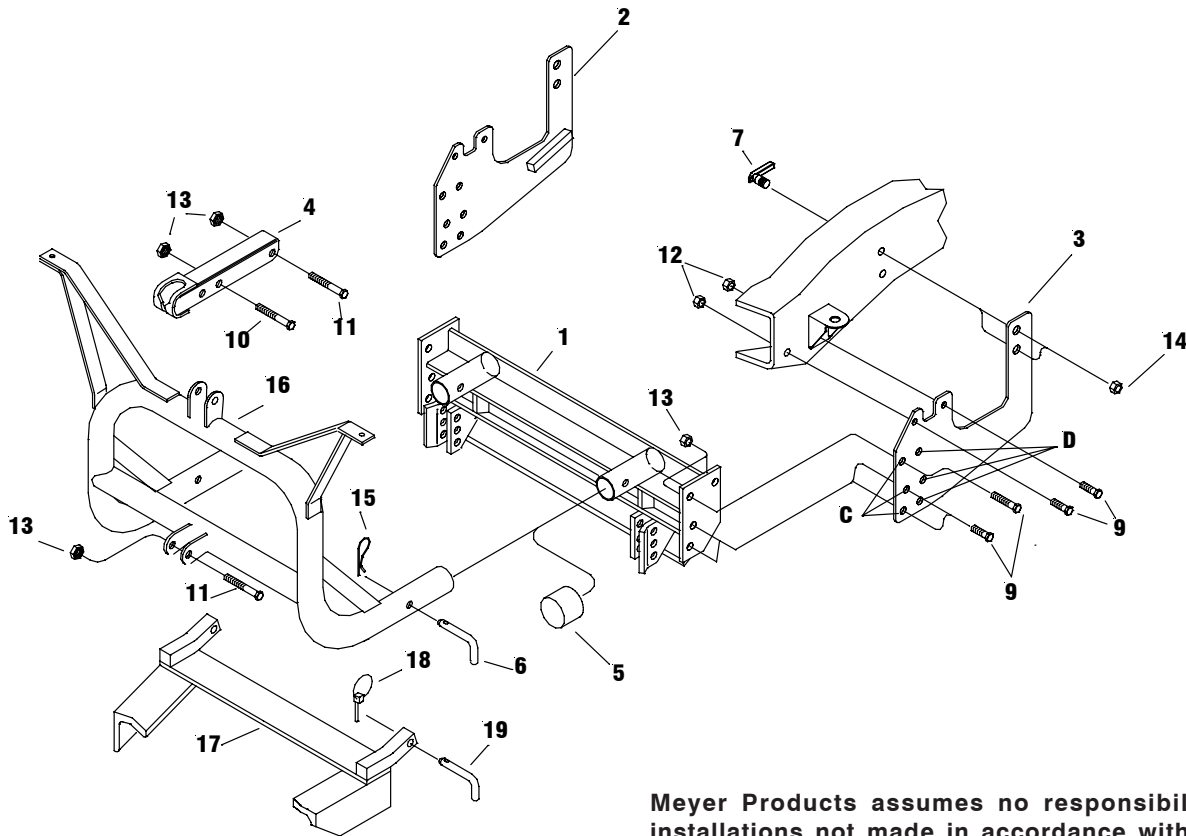
under the vehicle.

- G. Install lift frame (16) into the tubes on the clevis frame (1) using hinge pins (6) and hair pin cotter (15).

Note: before installing lift frame tubing to clevis frame, liberally coat ends of lift frame with chassis grease.

- H. Install lights making certain there is clearance behind the lights for opening the vehicle hood. Lights must be aimed to comply with Federal Regulations.
- I. Install light wiring per separate instructions.
- J. Attach lift arm (4) to lift frame (16) using 5/8-11 x 3-1/4" bolt (11) and 5/8-11 locknut (13). Mount hydraulic unit to lift frame with 5/8-11 x 3-1/4" bolt (11) and 5/8-11 locknut (13), and to lift arm (4) using 5/8-11 x 2-3/4" bolt (10) and 5/8-11 locknut (13).
- K. Install Hydraulic unit wiring system per separate instructions.
- L. Install EZ-Sweep Assembly per separate instructions.

Note: When the lift frame module (16) is removed from the vehicle, the insides of the clevis frame (1) receiver tubes and outside ends of the lift frame should be coated with chassis grease/anti-seize lubricant and the protective receiver tube caps (5) install over the clevis frame receiver tubes.



Meyer Products assumes no responsibility for installations not made in accordance with these instructions.