



PARTS & INSTALLATION INSTRUCTIONS

MEYER SNOW PLOW MOUNTING

1997 & Later FORD F150, F250 L.D. PICK-UP 4x4 VEHICLES

Non - Commercial for Personal - use ONLY

IMPORTANT NOTICE

End user must be given this instruction sheet prior to delivery of this Snow Plow.

The equipment you have just purchased should only be used on vehicles equipped with the Manufacturer's Snow Plow Preparation Packages. Snow Plowing without the original Snow Plow Preparation Package may damage your vehicle and the added weight to the equipment may impair the operation and control of the vehicle. Snow Plowing with a vehicle that the manufacturer does not recommend for that purpose may void your new vehicle warranty. If your vehicle is not originally equipped with the Snow Plow Package, additional parts may be necessary before snow plowing. Owners of these vehicles should consult their dealers before purchase or installation of such parts. CAUTION: the installation, on any vehicle, of these parts is not a full substitute for the original equipment Snow Plow Preparation Package.

Warning: Lift Arm extends beyond bumper of vehicle. To minimize damage from a front-end collision, Lift Arm should be removed from vehicle when Snow Plow is removed.

PARTS LIST

| Item | Part No. | Qty. | Description | | |
|-----------------------|----------|------|-------------------------------------|------|-------------------------------|
| | 17108 | 1 | MOUNTING CARTON | | |
| 1 | 11600 | 1 | • Clevis Frame | | |
| 2 | 11601 | 1 | • Side Member L.H. | | |
| 3 | 11602 | 1 | • Side Member R.H. | | |
| 4 | 11607 | 2 | • Stud Bar | | |
| 5 | 10514 | 1 | • Lift Arm | | |
| 6 | 11544 | 2 | • Receiver Tube Cap | | |
| | 08685 | 1 | • HARDWARE BAG | | |
| 7 | 07067 | 2 | •• Cap: Stud Bar | | |
| 8 | 11006 | 2 | •• Hinge Pin | | |
| 9 | 14595 | 2 | •• Special Bolt 3/4" | | |
| 10 | 20144 | 1 | •• Bolt H 5/8-11 x 2-3/4" Gr. 5 | | |
| 11 | 20146 | 2 | •• Bolt H 5/8-11 x 3-1/4" Gr. 5 | | |
| 12 | 20309 | 7 | •• Locknut Esna 5/8-11 | | |
| 13 | 20310 | 2 | •• Locknut 3/4-10 | | |
| 14 | 20355 | 4 | •• Flatwasher 1/2" | | |
| 15 | 20357 | 4 | •• Flatwasher 5/8 | | |
| 16 | 20359 | 2 | •• Flatwasher 3/4" | | |
| 17 | 21984 | 2 | •• Hair Pin Cotter | | |
| 18 | 22165 | 4 | •• Bolt H M12 x 1.75 x 60 MM | | |
| | 47170 | 2 | •• Spacer Stops | | |
| 19 | 11255 | 1 | LIFT FRAME (Tubular) | | |
| F150 (STL 7.5) | | | F250 L.D. (ST 7.5 - STP 7.5) | | |
| Item | Part No. | Qty. | Part No. | Qty. | DESCRIPTION |
| | 16507 | 1 | 16505 | 1 | SECTOR -A-FRAME CARTON |
| | 12182 | 1 | 12326 | 1 | • Sector |
| | 13635 | 1 | 13612 | 1 | • A-Frame |
| | 12978 | 3 | 07017 | 3 | • Trip Spring |
| | 09916 | 1 | 09916 | 1 | • Marker Kit |
| | 08166 | 1 | 08166 | 1 | • PLOW HARDWARE BAG |
| | 07996 | 1 | 07996 | 1 | •• Cable Tie |
| | 09119 | 2 | 09119 | 2 | •• Pivot Pin w/Cotter |
| 21 | 11101 | 2 | 11101 | 2 | •• Hinge Pin |
| 22 | 22083 | 2 | 22083 | 2 | •• Linch Pin |
| | 09122 | 1 | 09122 | 1 | •• King Bolt w/Locknut |
| | 09124 | 3 | 09124 | 3 | •• Eye Bolt w/Locknuts |
| | 07031 | 3 | 07031 | 3 | •• Eye Bolt Cap |

Parts indented are included in the assembly under which they are indented.

Meyer Products reserves the right, under its continuing product improvement program, to change construction or design details, specifications and prices without notice or without incurring any obligation.

GENERAL INFORMATION

CAUTION: Always disconnect battery before beginning installation.

DO NOT BURN holes or **WELD** vehicle frame. This may cause frame failure.

After first use, retighten all mounting bolt connections to specified torque. All mounting bolt connections to be checked periodically for tightness.

Locknuts are furnished **DO NOT** tighten bolts and nuts until installation is complete (unless otherwise specified), then be sure to tighten all attaching parts per specified torque chart.

NOTE: It is important that the Meyer harness, all wires from the Meyer light switch, and all other electrical wires be routed around hot or moving engine parts, and any sharp metal. Protection must be provided to guard against wire damage at these points. All excess or loose wires must be neatly secured using wire ties.

Check contents against the parts list to determine all are correct and included, and also to familiarize yourself with them.

SAFETY PRECAUTIONS should be used when Hydraulic Unit is in **OPERATION** and plow is in a **RAISED** position. Lower plow to ground when vehicle is **PARKED**.

OVERHAUL and **SERVICE INFORMATION** are covered on separate instructions.

Follow these instructions explicitly. Warranty does not apply to a Meyer product which has been negligently or improperly assembled or installed.

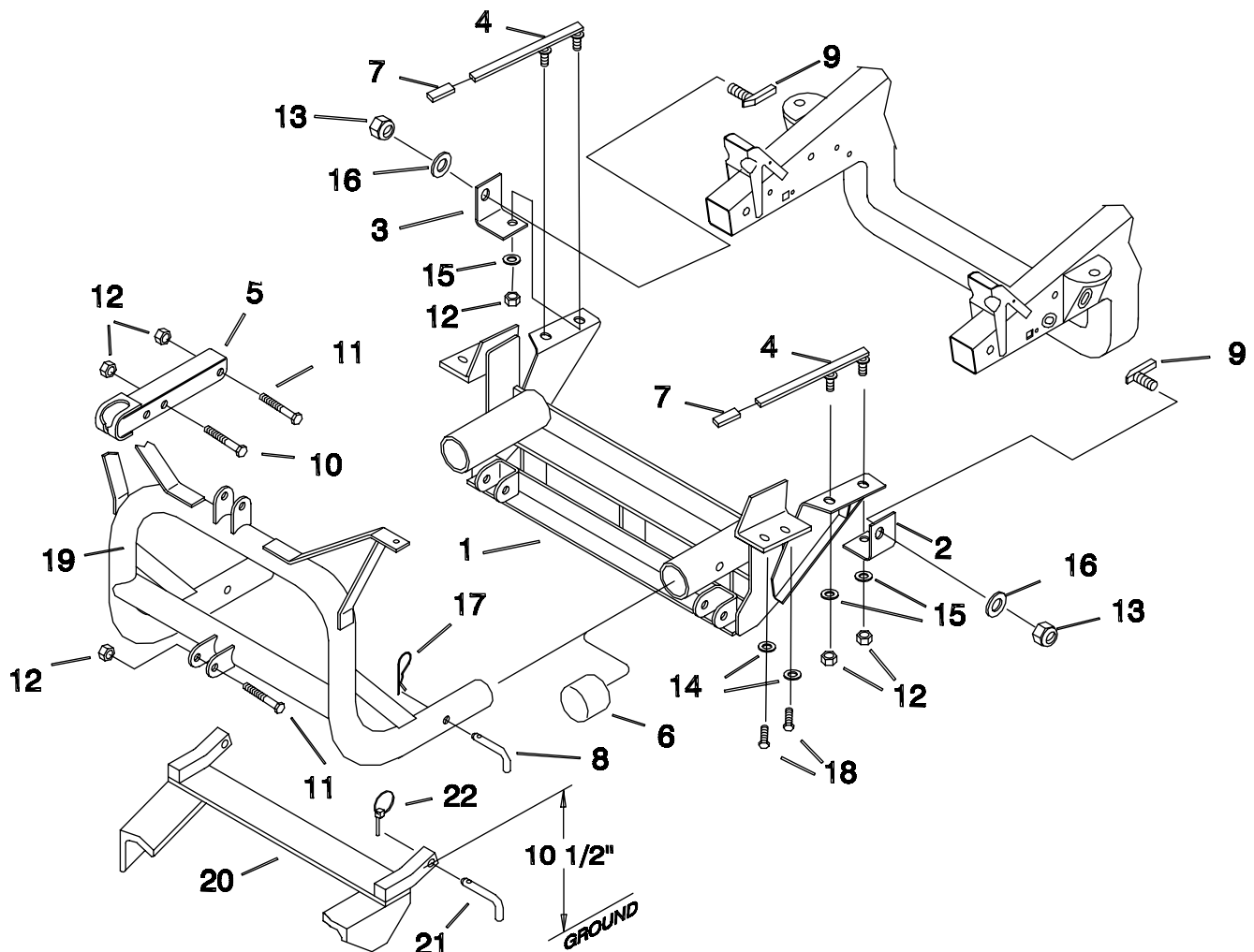
VEHICLES MUST HAVE :

- * Heavy Duty Optional Service Package 53C F150 - 3,900 lb. -- F250 L.D. - 3950 - 4,100 lb. front suspension as recommended by Ford Motor Company for snow plow applications.

Note: STP 7.5 Moldboard is only recommended on vehicles equipped with 4,100 Front G.A.W.R.

- * 139" W.B. REGULAR CAB ONLY
- * A Ballast weight may be required to prevent Front GAWR overloading. If required, ballast must be securely attached atleast 24 inches rear of the rear axle. Ballast weight should not exceed 800 lbs.

Must restrict Lariat Trim, Load leveling Suspension and Skid Plates when using 5.4L powertrains.

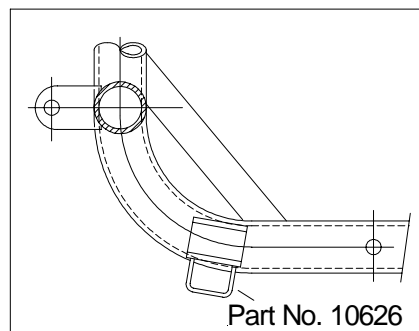
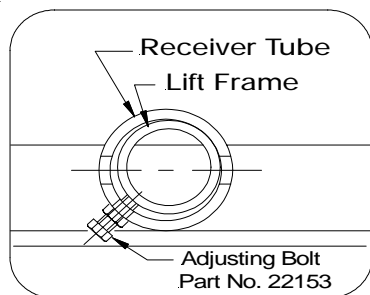


INSTALLATION INSTRUCTIONS

To maintain front end alignment measure and record the front bumper height before installing any hardware. Mount all snowplow hardware, adjust torsion bars per the Ford Shop Manual's alignment procedure until the original front bumper height is achieved. **Note:** Reverse this procedure when plow is removed.

Failure to follow these recommendations may cause premature tire wear and affect front end alignment.

- A. Remove Skid Plate if vehicle is so equipped. It will not be Re-used.
- B. Remove Tow Hooks. Nut Bar inside frame will be reused. If Tow Hooks are not reused, use existing bolts (*) to install Clevis Frame (1). **Note:** If Tow Hooks are reused, attach using M12 x 1.75 x 60MM bolts (18), flatwasher (14).
- C. Attach Clevis Frame (1) to bottom of vehicle frame at front using appropriate bolts as mentioned in Paragraph B.
- D. Assemble Stud Bar Caps (7) to Stud Bars (4). Insert Stud Bars (4) thru front of vehicle frame and extend bolts thru square holes in bottom of vehicle frame.
- E. Insert Special bolt (9) thru slot in vehicle frame and attach Clip Brackets (2&3) using 3/4" flatwasher (16) and 3/4-10 locknut (13).



TORQUE CHART FOOT LBS.

| Bolt Nut Size | Gr. 2 | Gr. 5 | Gr. 8 |
|---------------|---------|-----------|-----------|
| 1/4 - 20 | 4 - 5 | | |
| 5/16 - 18 | 9 - 11 | | |
| 3/8 - 16 | 17 - 20 | 26 - 29 | |
| 7/16 - 14 | | 42 - 46 | 60 - 66 |
| 1/2 - 13 | | 64 - 72 | 90 - 100 |
| 5/8 - 11 | | 127 - 141 | 179 - 198 |
| 3/4 - 10 | | 227 - 251 | |

Meyer Products assumes no responsibility for installations not made in accordance with these instructions.

- F. Attach Clevis Frame (1) and Clip Brackets (2 & 3) to bottom flange of vehicle frame using 5/8 flatwashers (15) and 5/8-11 locknuts (12).

Note: Before tightening the fasteners, the clevis frame (1) should be pushed back as far as possible under the vehicle.

- G. Tighten all fasteners to their proper torque. Tighten bolts in the same order they were assembled to the vehicle.

Important Notice: Prior to installation of the lift frame (19), it will be necessary to identify the lift frame being installed. Current production lift frames have additional stops (Part No. 10626) tack welded to the existing stops. (See illustration.) Earlier production lift frames will not have these stops. Depending upon the S.A.F. Carton being installed, additional stops may need to be added or removed.

- H. When installing S.A.F. Carton 16505 or 16507 lift frame additional stops Part No. 10626 should be removed and replaced with Spacers, Part No. 47170.

Note: Before installing lift frame tubing to clevis frame, liberally coat ends of lift frame with chassis grease / anti-seize lubricant.

- I. Install Lift Frame (19) into the tubes on the clevis frame. Turn adjusting bolts in until contact is made with lift frame.

Caution: Do not over tighten adjustment bolts. Adjust bolts for minimum clearance between lift frame and receiver tubes while still allowing for ease of lift frame removal. See illustration.

- J. Secure lift frame (19) to clevis frame (1) using hinge pin (8) and hair pin cotter (17).
- K. Attach lift arm (5) to lift frame (19) using 5/8-11 x 3-1/4" bolt (11) and locknut (12). Mount Hydraulic unit to lift frame using 5/8-11 x 3-1/4" bolt (11) and locknut (12), and to lift arm (5) using 5/8-11 x 2-3/4" bolt (10) and locknut (12). **(SEE WARNING)**
- L. Install hydraulic system and snow plow lights per separate instructions.
- M. Pre-Assemble Moldboard Assembly, A-Frame (20), Sector, ect., per separate instructions.
- N. Attach the A-Frame chain to the Lift Arm (5) allowing sufficient slack to enable the Moldboard to follow ground contour while plowing.

Note: When the lift frame module (19) is removed from the vehicle, the insides of the clevis frame (1) receiver tubes and outside ends of the lift frame should be coated with chassis grease/anti-seize lubricant and the protective receiver tube caps (6) install over the clevis frame receiver tubes.