



**PARTS & INSTALLATION INSTRUCTIONS
E-Z MOUNT XPRESS™ MOUNTING 17149
1994-2002 Dodge 2500-3500 4x4
Includes Sport Models**

End user must be given this instruction sheet prior to delievery of this Snow Plow.

SAFETY DEFINITIONS

	This is the safety alert symbol. It is used to alert you to potential personal injury hazards. Obey all safety messages that follow this symbol to avoid possible injury or death.
	DANGER Indicates an imminently hazardous situation which, if not avoided, will result in death or serious injury.
	WARNING Indicates a potentially hazardous situation which, if not avoided, could result in death or serious injury.
	CAUTION Indicates an potentially hazardous situation which, if not avoided, may result in minor or moderate injury.
	CAUTION used without the safety alert symbol indicates a potentially hazardous situation which, if not avoided, will result in property damage.

IMPORTANT NOTICE

In conjunction with FMVSS (Federal Motor Vehicle Safety Standards) and OEM (Original Equipment Manufacturer) guidelines, Meyer Products has designed this plow package with the following guidelines:

	Installation of a snowplow may effect your new vehicle warranty. For more information consult your Vehicle Owner's Manual / Vehicle Dealer.
--	---

	The vehicle must not be operated when overloaded. In all cases, the loaded vehicle weight, including the entire snowplow system, all aftermarket accessories, driver, passenger, options, nominal fluid levels, and cargo must not exceed the front/rear Gross Axle Weight Rating (GAWR), and total Gross Vehicle Weight Rating (GVWR). These weights ratings are specified on the safety compliance certification label on the driver's side door opening. The use of rear ballast weight may be required to prevent exceeding the front GAWR.
--	---

According to the NHTSA (National Highway Traffic Safety Administration) new and untitled vehicles need to be verified by the installer that snowplow and ballast (if needed) do no exceed the front/rear GAWR and total GVWR.

		Read the Meyer Owner's Manual before operating or servicing a snowplow. FOLLOW THESE INSTRUCTIONS EXPLICITLY.
--	--	--

GENERAL INFORMATION

	SAFETY PRECAUTIONS should be used when Hydraulic Unit is in OPERATION and plow is in a RAISED position. Lower plow to ground when vehicle is PARKED in case of hydraulic failure.
--	---

Check contents against the parts list to determine all are correct and included, and also to familiarize yourself with them.

	Warranty does not apply to a Meyer or Diamond product which has been negligently or improperly assembled or installed.
--	--

OVERHAUL and **SERVICE INFORMATION** are covered on separate instructions.

Parts indented are included in the carton, bag or assembly under which they are indented.

Meyer Products and Diamond Equipment reserves the right, under its continuing product improvement program, to change construction or design details, specifications and prices without notice or without incurring any obligation.

Meyer Products Inc. 18513 Euclid Ave. • Cleveland, Ohio 44112-1084 Phone 486-1313 (Area Code 216) www.meyerproducts.com • email info@meyerproducts.com

Diamond Equipment 6 Angell Lane • Damariscotta, ME 04543-4507 Phone 563-2227 (Area Code 207) www.diamondplow.com • email info@diamondplow.com
--



Parts List

Item	Part No.	Qty	Description
	17149	1	E-Z Mount Xpress™ Mounting Carton
1	19277	1	• L.H. Weldment
2	19278	1	• R.H. Weldment
3	19279	1	• Hanger Weldment
	08840	1	• Hardware Bag
4	20075	6	• Bolt H 7/16-14 x 2" Gr.5
5	20139	2	• Bolt H 5/8-11 x 1-1/2" Gr. 5
6	20166	4	• Bolt H 3/4-10 x 2-1/2" Gr. 5
7	20174	2	• Bolt H 3/4-10 x 5" Gr. 5
8	14595	2	• 3/4: J-Bolt
9	20306	6	• Locknut Esna 7/16-14
10	20310	12	• Locknut Esna 3/4-10
11	20354	12	• Flatwasher 7/16"
12	20359	8	• Flatwasher 3/4"
13	11139	4	• Washer Plate 7/16"
14	22134	2	• Special Washer 5/8"
15	22135	2	• Handle Nut
16	22497	4	• Bolt H 3/4-10 x 2-1/4" Gr. 5 Custom
17	19170	1	• Lift Frame/Brush Guard
18	07292	2	• Rubber Bumper
•	16535	1	Pivot Bar/A-Frame Carton

SUGGESTED ORDER OF NEW PLOW INSTALLATION

1. Vehicle specific mounting instruction - (Current Form)
2. Snow plow assembly - Form 1-839
3. Hydraulic/ lights / controls install - Form 1-820
4. Operation and Maintenance Manual - Form 4-611

General Information (Continued)

CAUTION

CAUTION: To avoid harm to vehicles **electrical system** always disconnect battery before beginning installation.

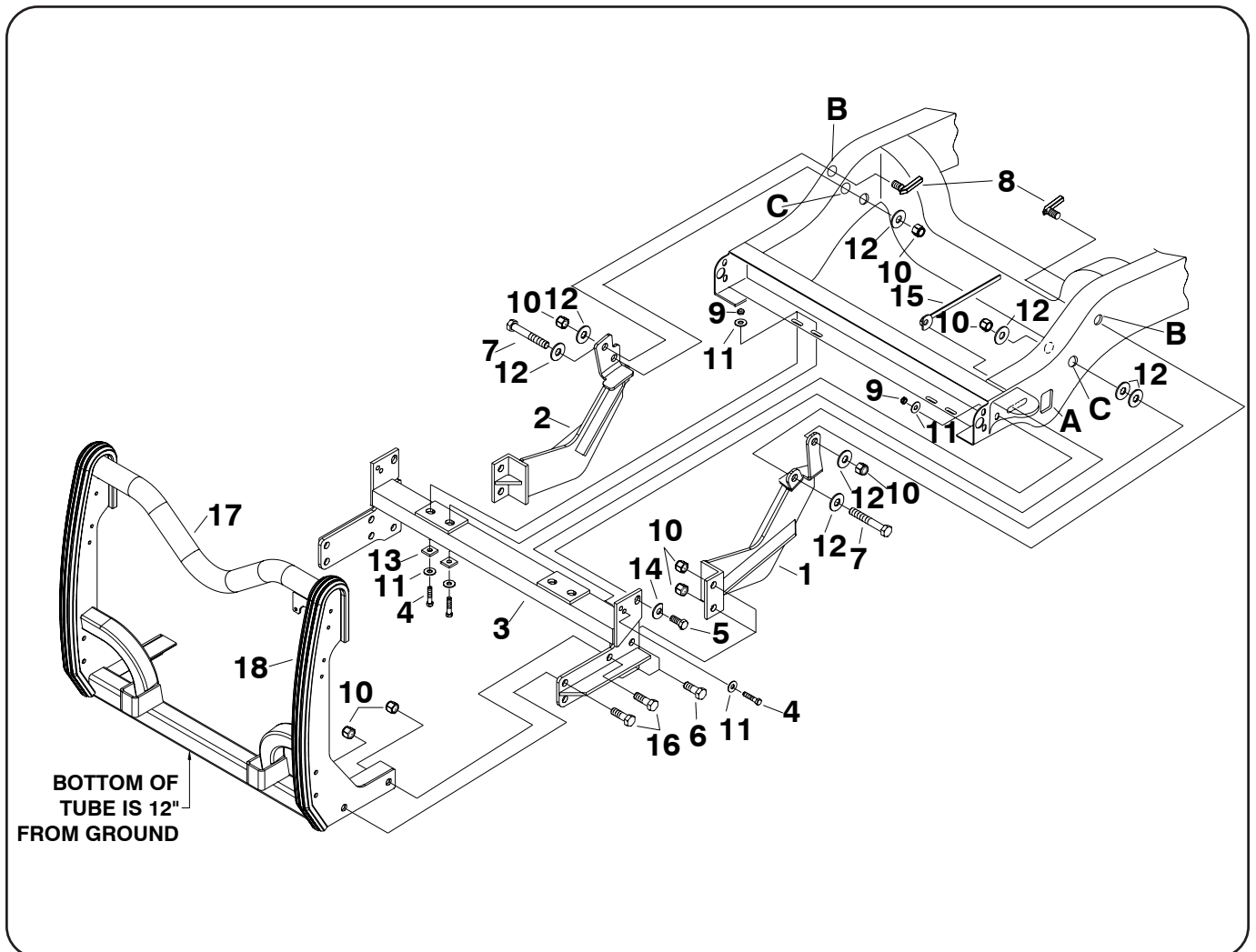
DO NOT BURN holes or **WELD** vehicle frame. This may cause frame failure.

After first use, retighten all mounting bolt connections to specified torque. All mounting bolt connections to be checked periodically for tightness.

Locknuts are furnished **DO NOT** tighten bolts and nuts until installation is complete (unless otherwise specified), then be sure to tighten all attaching parts per specified torque chart.

TORQUE CHART FOOT

Bolt Nut Size	Gr. 2	Gr. 5	Gr. 8
1/4 - 20	4 - 5		
5/16 - 18	9 - 11		
3/8 - 16	17 - 20	26 - 29	
7/16 - 14		42 - 46	60 - 66
1/2 - 13		64 - 72	90 - 100
5/8 - 11		127 - 141	179 - 198



VEHICLE RECOMMENDATIONS

WARNING

Due to weight restrictions on vehicle's front GAWR, ballast weight may be required and must be applied 18" from the rear taigate if needed.

Rear ballast is determined by weighing a vehicle's front and rear axles and adding weight behind the rear axle until front axle weight is under or equal to the vehicle specific front GAWR while not exceeding the rear GAWR and GVWR.

Vehicle option packages may vary. If in doubt, it is always a good idea to weigh the vehicle to ensure all weight ratings are not exceeded with plow in the raised position.

Dogde recommends the vehicle be equipped with the Snow Plow Preparation Package AHD.

INSTALATION INSTRUCTIONS

- A. Remove rear bumper support bracket bolt from side of vehicle frame. Retain all hardware, it will not be reused.
- B. **Note: It may be necessary to loosen the outer bumper support brackets to insert handle nut (15)through rectangular hole in side of vehicle frame hole A.** Loosely attach Hanger Weldment (3)to the rear bumper support bracket frame hole using a 7/16-14 x 2 bolt (4), 7/16 flatwashers (11), and 7/16 locknut (9) on each side. Attach to rear slot on the side of vehicle frame using a 5/8-11 x 1-1/2 bolt (5), special flatwasher (14), and handle nut (15) on each side. **Note: Snug all bolts during installation, do not tighten until final step.**
- C. Continue by attaching Hanger Weldment (3) to the four slots on bottom flange of front vehicle cross-member using 7/16-14 x 2 bolts (4), 7/16 flatwashers (11), 7/16 Washer Plates (13), and 7/16 locknuts (9) as shown in diagram.
- D. Attach the LH & RH Side Members (1&2) to the rear two holes in Hanger Weldment (3) using 3/4-10 x 2-1/2 bolts (6), and 3/4-10 locknuts (10).

Note: Depending on the vehicle's manufacture date, holes may already be in vehicle frame on one or both sides for attaching LH & RH Weldments (1&2). If holes exist on both sides, skip paragraph "E".

- E. With all bolts snug, temporarily raise LH & RH Weldments (1&2) until they meet the vehicle frame. While holding them tight against underside of vehicle frame and using the holes in Weldments a template, scribe hole location for holes to be drilled in vehicle frame. Remove LH & RH Weldments (1&2). **NOTE: If "B" and "C" holes exist on Drivers Side they may require re-sizing (see "B & C" drill sizes below)for assembly of attachment bolts.**

For ease in drilling/re-sizing holes, remove both front tires and jack vehicle body upward to allow clearance of strut on driver's side. Drill a 3/4" hole "C" all the way through the frame and a 1" hole "B" on outside frame rail only per illustration.

- F. Attach LH & RH Weldments (1&2) at holes "B" using 3/4 special bolts (8), 3/4 flatwashers (12), and 3/4-10 locknut (10) per illustration. Attach at holes "C" using 3/4-10 x 5" bolts (7), 3/4 flatwashers (12), and 3/4-10 locknuts (10). **Note: Due to vehicle frame variances it may be necessary to use the two 3/4 washers (12) at driver side hole "C" between the frame and LH Weldment (1).**
- G. Install Lift Frame/Brush Guard (17) to Hanger Weldment (3)using the set of holes that gets the bottom of the lift frame the closest to 12" (See Illustration).

As a general rule:

On 1500 Models: Install Lift Frame/Brush Guard (17) to upper holes on Hanger Weldment (3) using four 3/4-10 x 2 1/4" custom bolts (16), and 3/4-10 locknuts (10).

On 2500/3500 Models: Install Lift Frame/Brush Guard (17) to Hanger Weldment's (3)lower holes using four 3/4-10 x 2 1/4" custom bolts (16), and 3/4-10 locknuts (10).

- H. Tighten all fasteners to their proper torque. Tighten bolts in the same order they were assembled to the vehicle.

IMPORTANT: When installation is complete and all bolts have been torqued, it will be necessary to cut off the excess length of the handle on the handle nut (15).

- I. Install remaining snowplow hardware per separate instructions.

Meyer Products or Diamond Equipment assumes no responsibility for installations not made in accordance with these instructions.