



PARTS & INSTALLATION INSTRUCTIONS

E-57 MEYER ELECTRO-LIFT® with ELECTRO TOUCH® Control

PARTS LIST

ITEM	E - 57		E - 57H	QTY.	DESCRIPTION
	1-1/2" x 10" RAM	1-1/2" x 12" RAM	2" x 12" RAM		
	15868	15893	15898	1	Lift and P.A. Ass'y. (Complete) 12 volt
	15895	15896	15899	1	Lift and P.A. Ass'y. (Complete) 24 volt
1a	15865	15865	15866	1	• Lift Ass'y. (Unit only) 12 volt
1b	15881	15881	15885	1	• Lift Ass'y. (Unit only) 24 volt
2	15861	15861	15860	1	• Hydraulic Cover
3	15764	15764	15764	1	• Harness and Fuse Ass'y.
4a	15370	15370	15370	1	• Starter Solenoid - 12 volt
4b	15446	15446	15446	1	• Starter Solenoid - 24 volt
5	07019	07021	07023	1	• Ram L.H. with Hose & Fittings
	07968	05437	05752	1	•• Ram
6a	22144	22144	22144	1	•• Hose Ass'y. 1/4 x 45" Lg.
7a	21857	21857	21857	1	•• 1/4 x 90 Degree Elbow
8a	22291	22291	22291	1	•• Coupler 1/4 - Male Half
9a	22325	22325	22325	1	• Coupler Cap Low Spill
10	07020	07022	07024	1	• Ram R.H. with Hose & Fittings
	07968	05437	05752	1	•• Ram
6b	22144	22144	22144	1	•• Hose Ass'y. 1/4 x 45" Lg.
7b	21857	21857	21857	1	•• 1/4 x 90 Degree Elbow
8b	22292	22292	22292	1	•• Coupler 1/4 - Female Half
9b	22326	22326	22326	1	• Coupler Plug Low Spill
11	15811	15811	15811	1	• Pigtail Ass'y. (Two Terminal Motor)
12	15671	15671	15671	1	• Power Cable - 63" - RED
13	15672	15672	15672	1	• Ground Cable - 42" - BLACK
14	05024	05024	05024	1	• Power Cable - 36"
15	15669	15669	15669	1	• Weather Plug - Solenoid Wires
16	36248	36248	36248	1	• Weather Plug - Power Cables
17	08473	08473	08473	1	• Relief Valve Kit - Reservoir
	15765	15765	15765	1	• Hardware Bag
	07273	07273	07273	1	•• Tap Connector 3M Scotchlok 560
18	15102	15102	15102	1	•• Bolt 5/16" - 18 x 1/2" Gr. 2
19	15673	15673	15673	1	•• Membrane Switch Bracket
20	15675	15675	15675	1	•• Clamp Plate
21	15676	15676	15676	1	•• Backup Plate
22	20312	20312	20312	2	•• Locknut 1/4 - 20
23	20863	20863	20863	2	•• Machine Screw 1/4 - 20 x 1" RND. HD.
24	21398	21398	21398	2	•• S. Tapping Screw 1/4 - 14 x 3/4"
25	21400	21400	21400	1	•• Lockwasher INT/Ext Tooth 5/16
26	21832	21832	21832	1	•• Bushing - Split
	21953	21953	21953	1	•• Decal - Danger (Mount on Dashboard)
27a	22154	22154	22154	1	• Membrane Switch 12 Volt
27b	22170	22170	22170	1	• Membrane Switch 24 Volt
	08642	08642	08642	1	• Kit Bracket (Floor Mount)* Optional
28	15677	15677	15677	1	•• Bracket Floor
29	21398	21398	21398	4	•• Hex Head Self Tapping Screw 1/4 - 14 x 3/4"
30	20325	20325	20325	4	•• Lockwasher 1/4"
31a	08363	08364	08364	1	• Hardware Bag (P.A. Rams)
	20146	-----	-----	4	•• Bolt H 5/8 - 11 x 3 1/4" Gr. 5
31b	-----	20147	20147	4	•• Bolt H 5/8 - 11 x 3 1/2" Gr. 5
32	20309	20309	20309	4	•• Locknut 5/8 - 11
33	-----	20357	20357	2	•• Flatwasher 5/8

Parts indented are included in the carton, bag or assembly under which they are indented.

Meyer Products LLC reserves the right, under its continuing product improvement program, to change construction or design details, specifications and prices without notice or without incurring any obligation.

INSTALLATION INSTRUCTIONS

- A. Install E-57 Lift Assembly (1) to Lift Frame (using bolts supplied in the mounting carton), with the Electric Motor toward the right hand side (Passenger side); attach the lift ram in the inner hole of the Lift Arm (unless otherwise instructed in vehicle mounting instructions) as per illustration. On HM-9 and HM-10 Snow Plows only, attach the lift ram in the outer hole of the Lift Arm.
- B. Remove shipping plug from filler hole and install Relief Valve Kit (17). Tighten to 100-125 in. lbs.
- C. Install Coupler Cap and Plug (9a, 9b) onto Power Angling Block per illustration.

- D. Install Pigtail (11) to Lift Unit (1) with the red leg to the motor A2 (+) stud and black leg to the D1 (-) stud. Attach remaining black leg to base of the Lift Unit (1) using bolt (18) and lockwasher (25). Place lockwasher (25) between cable terminal and base so it bites into paint for proper ground.
- E. When Lift (1) is removed, protect the sockets from corrosion by using Weather Plugs (15 & 16).

WARNING:

Lift arm extends beyond bumper of vehicle. To minimize damage from a front-end collision, lift arm should be removed from vehicle when snow plow is removed.

- F. Choose a convenient location for the control switch (27). The light switch (found in light carton) can also be located wherever desired.

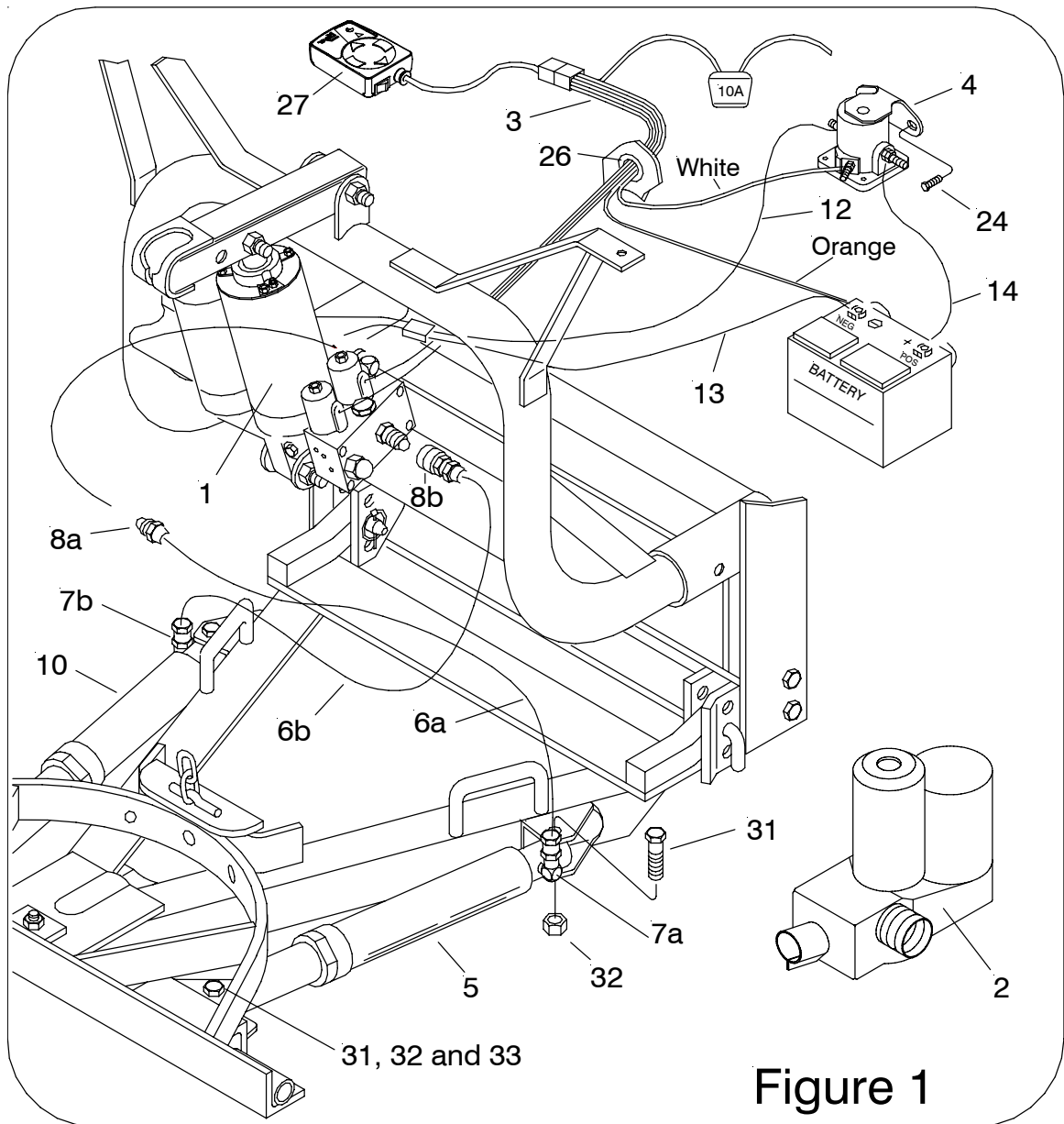
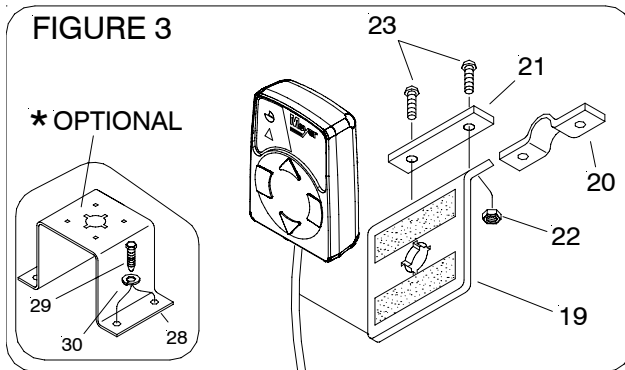
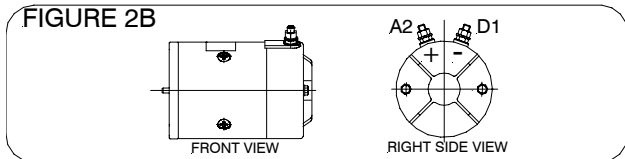
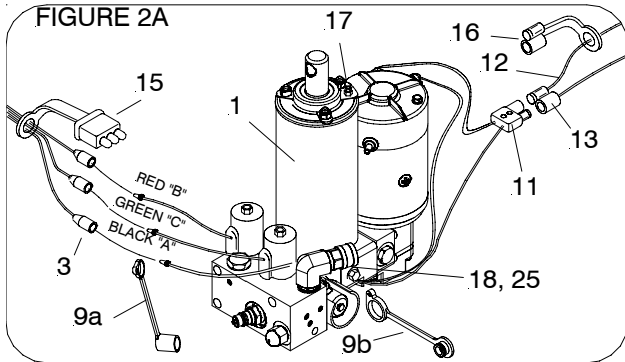


Figure 1

G. Choose a convenient location for the control switch. If the desired location is the dashboard, install Bracket (19) by drilling 2 holes in the dashboard and secure using Round Head Machine Screws (23) and Locknuts (22). Install Back-up Plate (21) behind dash for added stiffness. See Figure 3. Also apply Danger Decal 21953 to dashboard.

H. To mount control to shift lever, use Bracket (19), Clamp Plate (20), Round Head Machine Screws (23) and locknuts (22). See Figure 3.



ADDITIONAL BATTERY CONNECTIONS:

a. When attaching cables to battery with side post terminals, use M.P. Adaptor Part #21976 and attach as shown in Figure 1.

b. Figure 2 illustrates the method of using a repair type terminal connector which is original equipment on some vehicles.

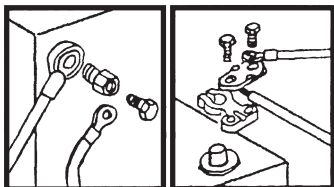


Fig. 1 Fig. 2

I. Use Bushing (26) where Harness (3) is routed through firewall and radiator support panel. Requires 7/8" diameter hole. Be certain to route all wiring around hot or moving engine parts, and any sharp sheet metal. Protection must be provided to guard against wire damage at these points. All excess or loose wire must be neatly secured using wire ties. Fused lead from Wiring Harness (3) must be attached to terminal in fuse panel that is activated only when the ignition key is "on." The three colored wires in Harness (3) must be routed through grill to E-57 unit.

J. Install Starter Solenoid (4) to metal surface in engine compartment using Screws (24). (Solenoid must be grounded to operate). Slide Weather Plugs (15 & 16) over Power Cable (12) and Ground Cable (13). Attach Red Power Cable (12) to a large terminal on Starter Solenoid (4) and route plug-end to front of grill area of truck. Attach Black Ground Cable (13) to negative (-) terminal of battery and route plug-end to front grill area. Attach 36" Power Cable (14) to positive (+) terminal of battery and remaining large terminal on Starter Solenoid (4). Attach small white wire with eyelet from harness (3) to small terminal on Starter Solenoid.

POWER ANGLING CYLINDERS:

Attach Power Angling Cylinders (5 & 10) to Sector and A-Frame using bolts (31) and locknuts (32). When using 1-1/2" x 12" rams also install washer (33) at Piston end of Rams (5 & 10).

Make certain Ram (5) with hose (6) and Male-half of coupler (8) is on Driver's side of A-Frame and Ram (10) with Hose (6) and Female-half of coupler (8) is on the Passenger-side of A-Frame.

Note: When the Moldboard Assembly is removed from the vehicle, to prevent contamination to the Couplers and Hydraulic system, the L.H. and R.H. Power Angling Hoses must be re-attached by plugging the coupler (8a, 8b) together. Also where the power angling hoses were uncoupled at the hydraulic unit, attach Coupler Cap (9a) and Plug (9b) to the female and male halves of coupler.

Power Angling Cylinders furnished with the ELECTRO-LIFT® have been factory filled with the proper amount of fluid. If for any reason it is necessary to add fluid to Reservoir or to bleed the Power Angling Cylinders, proceed as follows:

- a. Remove Relief Valve (17) from Reservoir to add fluid during charging and bleeding.
- b. Temporarily loosen both hose connections at the R.H., L.H. Power Angling Cylinders. Base end of Cylinder must be higher than Rod end to enable trapped air to escape.
- c. Angle the Plow in both directions until fluid leaks out at both points in a steady flow.
- d. Retighten the hose connections.

NOTE:

Proper fluid level is 1-1/2" below filler hole. It must be checked with the lift arm fully retracted (down).