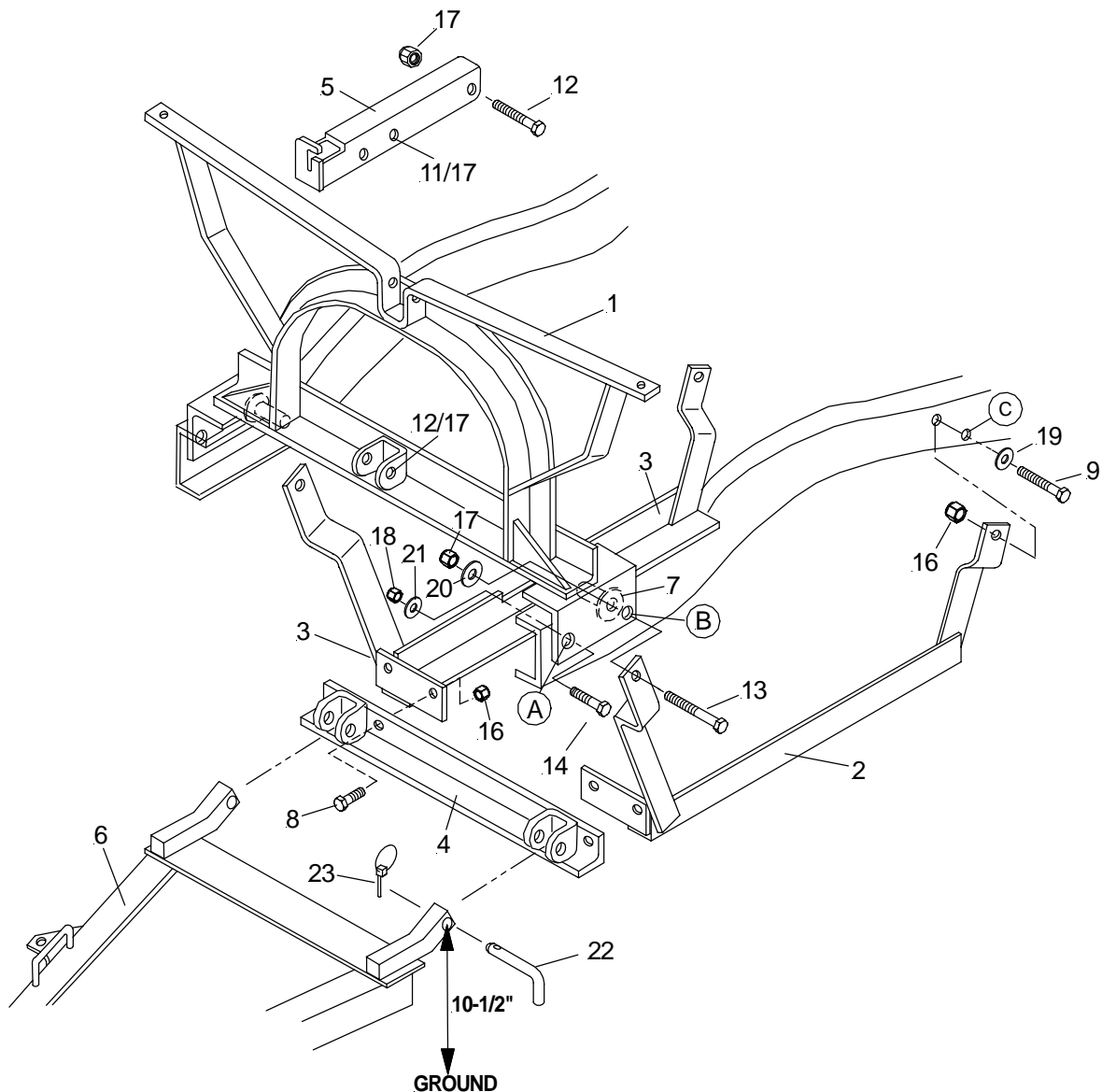


PARTS & INSTALLATION INSTRUCTIONS MEYER SNOW PLOW MOUNTING for JEEP UNIVERSAL 1972 - 1986 IMPORTANT NOTICE

End user must be given this instruction sheet prior to delivery of this snow plow.

The equipment you have purchased should only be used on vehicles equipped with the manufacturer's snow plow preparation packages. Snow plowing without the original snow plow preparation package may damage your vehicle and the added weight of the equipment may impair the operation and control of the vehicle. Snow plowing with a vehicle that the manufacturer does not recommend for that purpose may void your new vehicle warranty. If your vehicle is not originally equipped with the snow plow preparation package, additional parts may be necessary before snow plowing. Owners of these vehicles should consult their dealers before purchase or installation of such parts. **CAUTION:** The installation, on any vehicle, of these parts is not a full substitute for the original equipment snow plow preparation package.

WARNING: Lift arm extends beyond bumper of vehicle. To minimize damage from a front-end collision. Lift arm should be removed from vehicle when snow Plow is not in use.



Meyer Products reserves the right, under its continuing product improvement program, to change construction or design details, specifications and prices without notice or without incurring any obligation.

GENERAL INFORMATION

CAUTION: Always disconnect battery before beginning installation.

“DO NOT burn holes or weld vehicle frame. This may cause frame failure.

Check contents against the parts to determine all are correct and included.

Locknuts are furnished. All bolts are grade 5, all locknuts are nylon insert type. Do not tighten bolts and nuts until installation is complete (unless otherwise specified), then be sure to tighten all attaching parts per specified torque chart.

When ordering parts furnish Part No., Name and Description. Also furnish Vehicle Model and Year, Type of Hydraulic Unit and Plow Size.

After first use, retighten all mounting bolt connections to specified torque. All Mounting bolt connections to be checked periodically for tightness .

INSTALLATION INSTRUCTIONS

A. Remove front bumper from vehicle. Retain original attaching parts and fasteners.

B. At holes “A” & “B”, shim when required between Lift Frame (1) and vehicle frame using washers (20 & 21) .

C . For boxed frame applications, instal I Tube Spacer (7) at hole “B ”. Spacer to be be-tween Lift Frame (1) and Side Mem-bers (2 & 3) to vehicle frame at hole “B” with 5/8 x 4-1/2 bolts (13) and locknuts (17).

D. Using hole “C” as a pilot hole, drill a 17/32" diameter hole through the inside frame rail.

E. Attach Side Member (2 & 3) at hole “C ” with 1/2 x 3-1/4 bolts (9) and locknuts (16).

F. Attach the Clevis Frame (4) to the Side Members (2 & 3) with 1/2 x 1-3/4 bolts (8) and locknuts (16).

G. Attach Lift Arm (5) to the Lift Frame (1) with 5/8 x 3-1/2 bolt (12) and locknuts (17).

H. Reinstall bumper with original parts and fasteners.

I. Before tightening Lift Frame bolts, pull top of Lift Frame (1) forward to take out the slack in the bolt holes. Tighten all bolts per specified torque chart.

J. Pre-assemble Moldboard Assembly, A-Frame (6), Sector, etc., per separate instructions .

PARTS LIST

Item	Part No.	Qty.	Description
	17000	1	MOUNTING CARTON
1	10371	1	• Lift Frame
2	10351	1	• Side Member L.H.
3	10350	1	• Side Member R.H.
4	14618	1	• Clevis Frame
5	10514	1	• Lift Arm
6	13299		• A-Frame
	12326	1	•Sector
	07017	2	• Trip Spring
	08346	1	• HARDWARE BAG - MTG.
7	10375	2	•• Tube Spacer Assy.
8	20096	4	•• Bolt H 1/2-13 x 1-3/4
9	20102	2	•• Bolt H 1/2-13 x 3-1/4
10	20140	1	•• Bolt H 5/8-11 x 1-3/4
11	20144	1	•• Bolt H 5/8-11 x 2-3/4
12	20147	3	•• Bolt H 5/8-11 x 3-1 /2
13	20150	2	•• Bolt H 5/8-11 x 4-1/2
14	20164	2	•• Bolt H 3/4-10 x 2
15	07265	1	•• Pipe Spacer
16	20307	6	•• Lock Nut 1/2-13
17	20309	5	•• Lock Nut 5/8-11
18	20310	2	•• Lock Nut 3/4-10
19	20355	2	•• Flat Washer, 1/2
20	20357	4	•• Flat Washer, 5/8
21	21260	4	•• Flat Washer, 3/4
	08563	1	• PLOW HARDWARE BAG
	09119	2	•• Pivot Pin w/Cotter Pin
22	11006	2	•• Hinge Pin
23	21984	2	•• Hair Pin Cotter
	09122	1	•• King Bolt w/Nut
	09124	2	•• Eye Bolt w/Nuts
	09916	1	• PLOW MARKER KIT
	08201	2	•• Plow Marker Ass'y.
	12816	2	•• Clamp
	20005	2	•• Bolt H 1/4-20 x 1
	20312	2	•• Locknut 1/4-20

Parts indented are included in the carton, bag or assembly under which they are indented.

K. Connect the A-Frame (6) to Clevis Frame (4) using Hinge Pins (22) and Spring Clips (23).

L. Hook the A-Frame chain to the Lift Arm (5) allowing sufficient slack to enable the Moldboard to follow ground contour while plowing.

NOTICE: Meyer Products assumes no responsibility for installations not made in accordance with these instructions.