

GENERAL INFORMATION

CAUTION: Always disconnect battery before beginning installation.

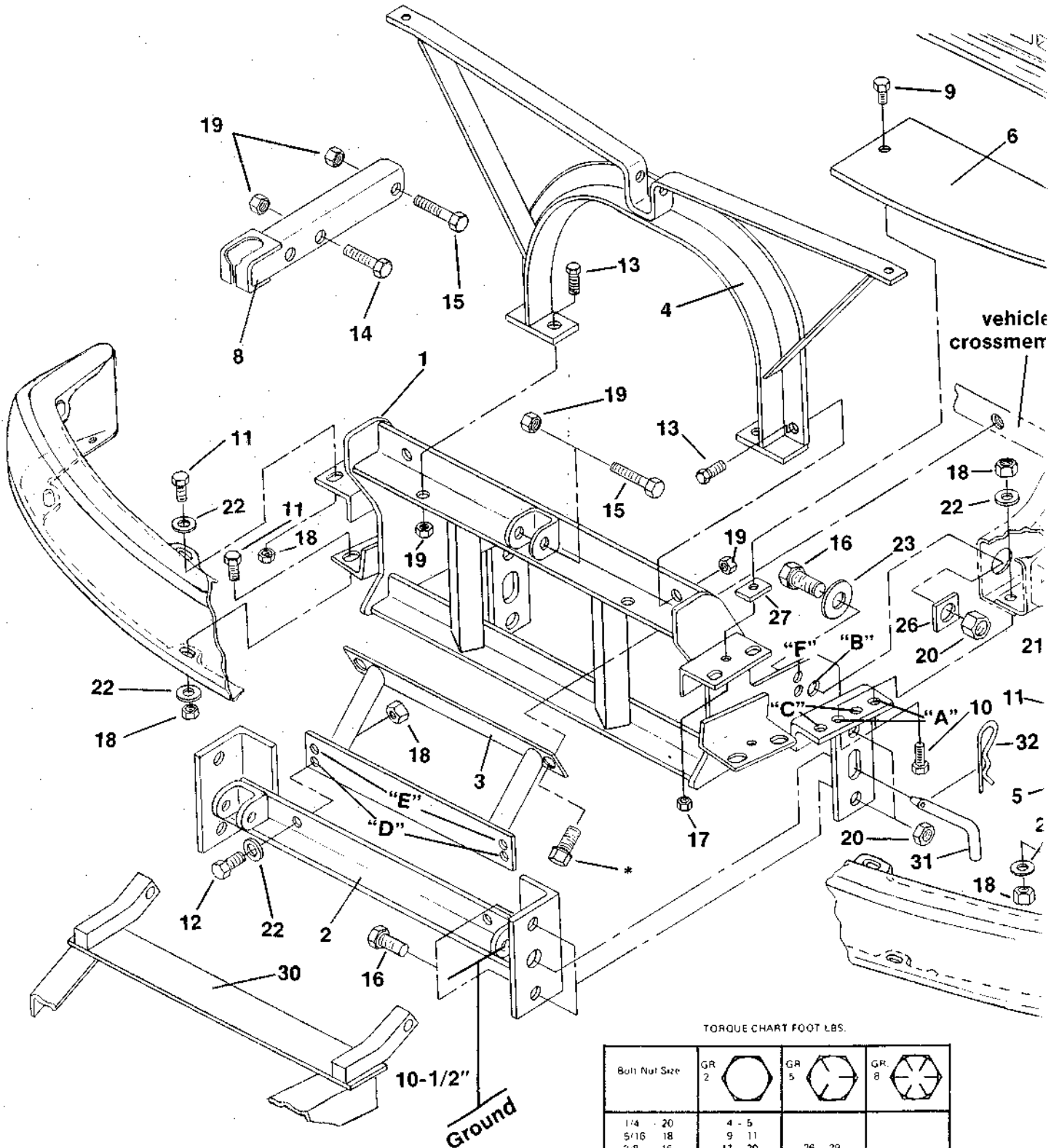
CAUTION: When drilling holes in vehicle frame, move brake lines and electrical wiring from path of drill. Brake lines must be clear of fasteners.

DO NOT burn holes or weld vehicle frame. This may cause frame failure.

After first use retighten all mounting bolt connections to specified torque. All mounting bolt connections to be checked periodically for tightness.

Check contents against the parts list to determine all are correct and included; and also to familiarize yourself with them.

Locknuts are furnished. Do not tighten bolts and nuts until installation is complete (unless otherwise specified), then be sure to tighten all attaching parts per specified torque chart.

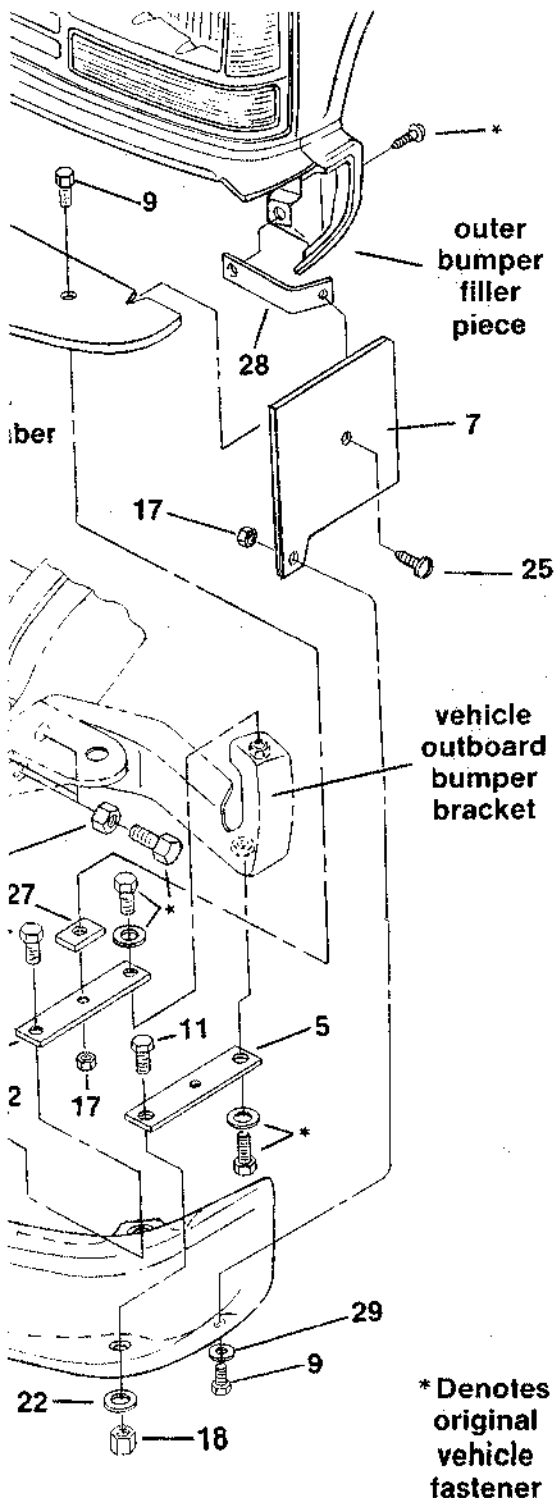


TORQUE CHART FOOT LBS.

Bolt Nut Size	GR		
	2	5	8
1/4 - 20	4 - 5		
5/16 - 18	9 - 11		
3/8 - 16	17 - 20	26 - 29	
7/16 - 14		42 - 46	60 - 66
1/2 - 13		64 - 72	90 - 100
5/8 - 11		127 - 141	179 - 198
3/4 - 10		227 - 251	

INSTALLATION INSTRUCTIONS

- A. Before removing the front bumper it is necessary to remove the marker lights and grill in order to gain access to upper bumper bolts. The number of screws involved in removal of the grill varies from 12 to 16, depending on trim level and number of headlights. **IMPORTANT:** Before the bumper is removed from the vehicle, steps must be taken to protect the outer bumper filler piece that sits inside the ends of the bumper. Cardboard or heavy cloth must be put on these pieces so the inside edge of the bumper does not scratch them while being removed.



- B. After the grill is removed, remove the top 4 bumper bracket bolts then the bottom 4 bumper bracket bolts. Slide bumper to one side and pull away from vehicle. Slide to opposite side and remove other end from vehicle.
- C. Remove bumper brackets from end of vehicle frame and place in cab. Reinstall bumper bracket bolts using 14mm Hexnuts (21). Tighten to 90 lb. ft. Remove splash pan and retain fasteners.
- D. Reinstall grill and marker lights.
Before proceeding, refer to supplement 1-622S
- E. Attach Lift Frame (1) to truck frame at holes "A" using 1/2 x 1-3/4" Bolts (10), Flatwashers (22) and Locknuts (18) and at hole "B" using 3/4 x 2" Bolt (16), Flatwasher (23), Spacer (26) and Locknut (20). For K-30 trucks use holes "C" and "B".
- F. Install Clevis Frame (2) to Lift Frame (1) using 3/4 x 2" Bolts (16) and Locknuts (20).
- G. Cut mounting ears off front of splash pan. Mount supplied clip to splash pan using #10 x 1/2" Screws (24). They should be placed similarly to the original ears, but be 3/8" in from the original ears location. Reattach front of splash pan to vehicle using original vehicle fasteners.
- H. Swing the rear of the splash pan into position and place the Clevis Support (3) against it. Secure both pieces to vehicle crossmember using original vehicle splash pan bolts. Secure front of Clevis Support (3) to Clevis Frame (2) using 1/2 x 1-1/2" Bolts (12), Flatwashers (22) and Locknuts (18). Use holes "D" in Clevis Support (3) except for K-30 trucks which use holes "E".
- I. Attach Lift Hoop (4) to Lift Frame (1) using 5/8 x 1-3/4" Bolts (13) and Locknuts (19). Push back on Clevis Frame (2) while pulling forward on Lift Hoop (4) and tighten all fasteners to proper torque.
- J. Before installing bumper, remove the bolt from the front of the body filler piece and using the same bolt, sandwich Trim Bracket (28) between Tinnerman nut and body filler piece.
- K. Mount the Bumper Extension Plates (5) to the vehicle's outboard bumper brackets using original vehicle bolts and flatwashers.
- L. Attach bumper to Lift Frame (1) and Bumper Extension Plates (5) using 1/2 x 1-1/4" Bolts (11), Flatwashers (22) and Locknuts (18).
- M. Install Front Trim Piece (6) using 1/4 x 1" Bolts [Black Finish] (9) and Locknuts (17). Be certain Spacers (27) are placed underneath so Trim Pieces (6) are raised to proper height. Attach Side Trim (7) to previously installed Trim Bracket (28) using #10 x 1" Black Finish Self-Tapping Screws (25), 1/4 x 1" Bolts (9), 1/4 Flatwasher (29) and 1/4 Locknut (17).
- N. Attach Lift Arm (8) to Lift Frame (1) using 5/8 x 3-1/2" Bolts (15) and Locknut (19). Mount E-47 unit to Lift Frame with 5/8 x 3-1/2" Bolt (15) and Locknut (19) and to Lift Arm (8) using 5/8 x 2-3/4" Bolt (14) and Locknut (19).
- O. This step not needed with newer plug-in type power cables. Install hydraulic system per separate instructions. Extend the length of the ground cable furnished with the power pack, so it can be attached to the negative battery terminal, by joining two cables together with 5/16 x 3/4 bolt, 5/16 locknut and 5/16 int. ext. tooth washer between the cable terminals. Completely insulate the connection with tape.
- P. Assemble moldboard to sector and A-frame (30) per separate instructions.
- Q. Connect A-frame (30) to Clevis Frame (2) using hinge pins (31) and hair pin cotters (32).
- R. Attach A-frame chain to lift arm (8) allowing sufficient slack to enable moldboard to follow ground contour while plowing.

NOTICE: Meyer Products assumes no responsibility for installations not made in accordance with these instructions.