

## PARTS & INSTALLATION INSTRUCTIONS

### MEYER EZ - SWEEP MOUNTING

### 1997 & Later Explorer/1998 & Later Ranger 4 X 4 Vehicles

#### IMPORTANT NOTICE

Vehicles with EZ-Sweeps installed may be so equipped as to meet vehicle manufacturers' specifications and recommended options. Most vehicle manufacturers insist that vehicles which are to be used for brooming be equipped with certain options and accessories, and it is so stated in vehicle manufacturer specifications for snow plow application. **WARNING: DO NOT INSTALL A SNOW PLOW ON A VEHICLE THAT IS NOT RECOMMENDED FOR SNOW PLOW APPLICATION BY THE VEHICLE MANUFACTURER. DOING SO MAY BE DANGEROUS AND WILL VOID THE MEYER / DIAMOND WARRANTY. PLEASE CONTACT YOUR VEHICLE MANUFACTURER, MEYER PRODUCTS, OR YOUR NEAREST AUTHORIZED MEYER OR DIAMOND DISTRIBUTOR IF YOU HAVE ANY QUESTIONS ABOUT APPLICATIONS.**

**Warning:** Lift Arm extends beyond bumper of vehicle. To minimize damage from a front-end collision, Lift Arm should be removed from vehicle when Broom is removed.

#### PARTS LIST

Item	Part No.	Qty.	Description
	18085	1	<b>Mounting Carton</b>
1	11690	1	• Clevis Frame
2	10514	1	• Lift Arm
3	11462	2	• Receiver Tube Cap
4	-----	1	• A-Frame
	-----	1	• Pivot Bar
	08715	1	• <b>Hardware Bag</b>
5	11006	2	•• Hinge Pin
6	10323	2	•• Spacer
7	11687	2	•• Sleeve
8	14595	2	•• Special Bolt 3/4"
9	20144	1	•• Bolt H 5/8-13 x 2-3/4" Gr. 5
10	20146	2	•• Bolt H 5/8-11 x 3-1/4" Gr. 5
11	20150	2	•• Bolt H 5/8-11 x 4-1/2" Gr. 5
12	20309	5	•• Locknut Esna 5/8-11
13	20310	2	•• Locknut Esna 3/4-10
14	20357	4	•• Flatwasher 5/8"
15	21984	2	•• Hair Pin Cotter
16	11275	1	<b>Lift Frame (Tubular)</b>
17	08709	1	Kit Stand

Parts indented are included in the carton, bag or assembly under which they are indented. When ordering parts, furnish Part No., Name, and Description. Also furnish Vehicle Model and Year. Type of Hydraulic Unit and Moldboard Size.

Meyer Products reserves the right, under its continuing product improvement program, to change construction or design details, specifications and prices without notice or without incurring any obligation.

## GENERAL INFORMATION

**CAUTION:** Always disconnect battery before beginning installation.

**DO NOT BURN** holes or **WELD** vehicle frame. This may cause frame failure.

After first use, retighten all mounting bolt connections to specified torque. All mounting bolt connections to be checked periodically for tightness.

Locknuts are furnished **DO NOT** tighten bolts and nuts until installation is complete (unless otherwise specified), then be sure to tighten all attaching parts per specified torque chart.

**NOTE:** It is important that the Meyer harness, all wires from the Meyer light switch, and all other electrical wires be routed around hot or moving engine parts, and any sharp metal. Protection must be provided to guard against wire damage at these points. All excess or loose wires must be neatly secured using wire ties.

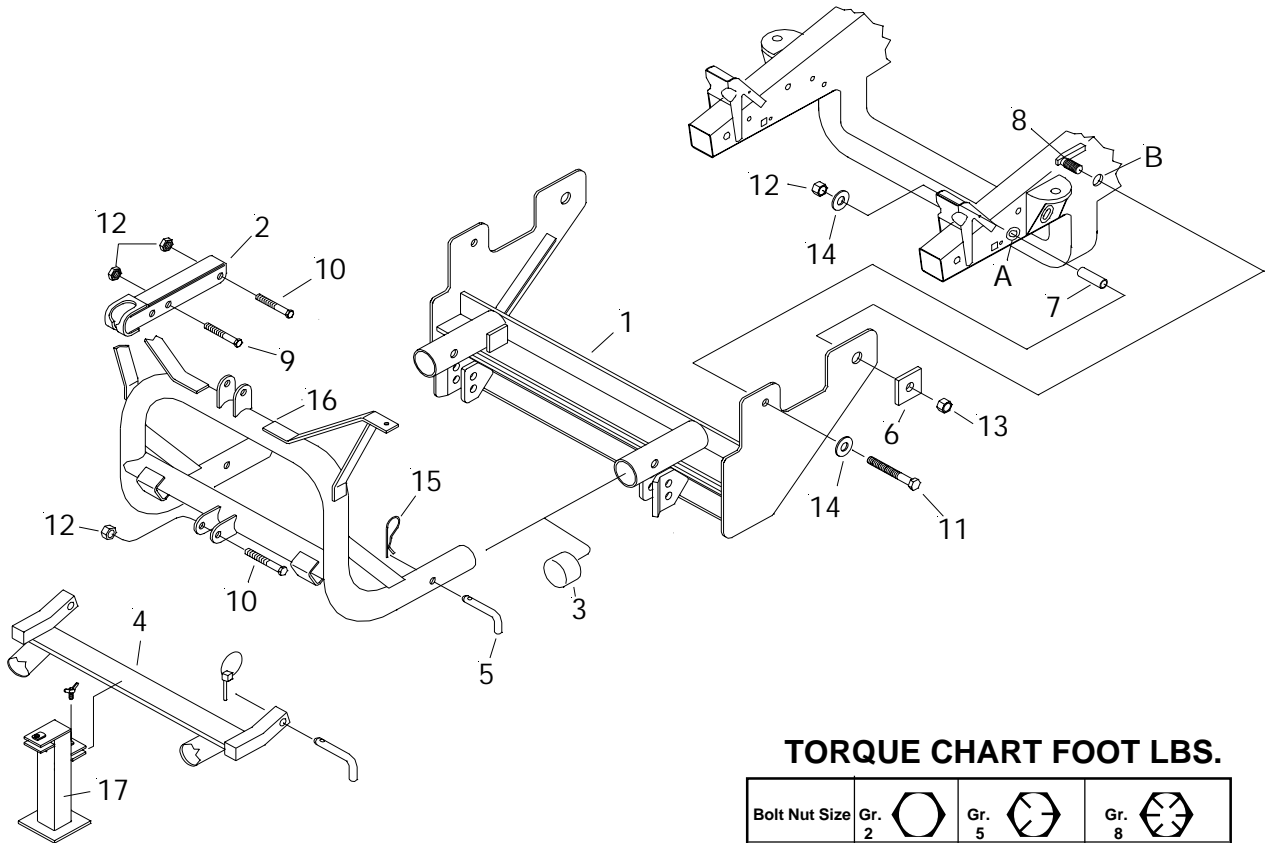
Check contents against the parts list to determine all are correct and included, and also to familiarize yourself with them.

**SAFETY PRECAUTIONS** should be used when **Hydraulic Unit is in OPERATION** and plow is in a **RAISED** position. **Lower plow to ground when vehicle is PARKED.**

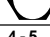

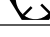
**OVERHAUL** and **SERVICE INFORMATION** are covered on separate instructions.

Follow these instructions explicitly. Warranty does not apply to a Meyer product which has been negligently or improperly assembled or installed.

**When ordering parts, furnish Part No., Name and Description. Also furnish Vehicle Model and Year, Type of Hydraulic Unit and Broom Size.**



### TORQUE CHART FOOT LBS.

Bolt Nut Size	Gr. 2 	Gr. 5 	Gr. 8 
1/4 - 20	4 - 5		
5/16 - 18	9 - 11		
3/8 - 16	17 - 20	26 - 29	
7/16 - 14		42 - 46	60 - 66
1/2 - 13		64 - 72	90 - 100
5/8 - 11		127 - 141	179 - 198
3/4 - 10		227 - 251	

Meyer Products assumes no responsibility for installations not made in accordance with these instructions.

# INSTALLATION INSTRUCTIONS

## IMPORTANT NOTICE

1. "If a EZ-Sweep is installed on this vehicle, compensating weight must be added and securely anchored at the extreme rear of the cargo box to prevent overloading of the front axle."

If the front axle loading exceeds either 62 percent of the empty truck total weight, or the front GAWR, ballast compensating weight must be permanently attached at the rear of the truck to bring front axle weight within weight specifications.

- A. Remove front vehicle bumper. Retain all hardware, it will be reinstalled later. Note: Removal of front tow hooks may be necessary to remove front bumper. The tow hooks will be reinstalled later.
- B. Remove air dam. Retain all hardware. The air dam may be reinstalled.
- C. Position clevis frame (1) on outside of frame rails and align front clevis holes to slot (A) on vehicle frame. Using the front hole in the clevis frame as a template, drill a 21/32" hole all the way through the vehicle frame. **Important:** For installation of Sleeve (7) into hole "A", it will be necessary to first enlarge the hole in the outer section of the vehicle frame. Redrill this hole to 27/32". **See illustration.**
- D. Attach clevis frame to hole "A" using 5/8-11 x 4-1/2" bolts (11), Flatwashers (14), Sleeves (7), and Locknuts (12) per illustration. **Do not tighten at this time.**
- E. Position clevis frame (1) on vehicle frame so that the clevis frame receiver tubes are level to the ground. Using the rear hole in the clevis frame as a template, scribe hole "B" location onto vehicle frame. Drill a 1" hole thru the outside frame rail only.
- F. Attach rear clevis hole using Special Bolt (8), Spacer (6), and Locknut (13) as shown.

**NOTE: Before tightening the fasteners, the clevis frame should be pushed back as far as possible under the vehicle.**

- G. Tighten all fasteners to their proper torque. Tighten bolts in the same order they were assembled to the vehicle.
- H. Reinstall tow hooks and bumper. Reinstall air dam if desired, notching out around clevis frame may be necessary.
- I. Install lift frame (16) into the tubes on the clevis frame (1) using hinge pins (5) ( ) and hair Pin Cotter (15).

**Note: before installing lift frame tubing to clevis frame, liberally coat ends of lift frame with chassis grease.**

- J. Install lights making certain there is clearance behind the lights for opening the vehicle hood. Lights must be aimed to comply with Federal Regulations.
- K. Install EZ-Sweep light wiring per separate instructions.
- L. Attach lift arm (2) to lift frame (16) using 5/8-11 x 3-1/4" Bolt (10) and locknut (12). Mount hydraulic unit to lift frame with 5/8-11 x 3-1/4" Bolt (10) and locknut (12), and to lift arm (2) using 5/8-11 x 2-3/4" Bolt (9) and locknut (12).
- M. Install Hydraulic unit wiring system per separate instructions.

**Note:** When the lift frame (16) is removed from the vehicle, the insides of the clevis frame (1) receiver tubes and outside ends of the lift frame should be coated with chassis grease/anti-seize lubricant and the protective receiver tube caps (3) install over the clevis frame receiver tubes.