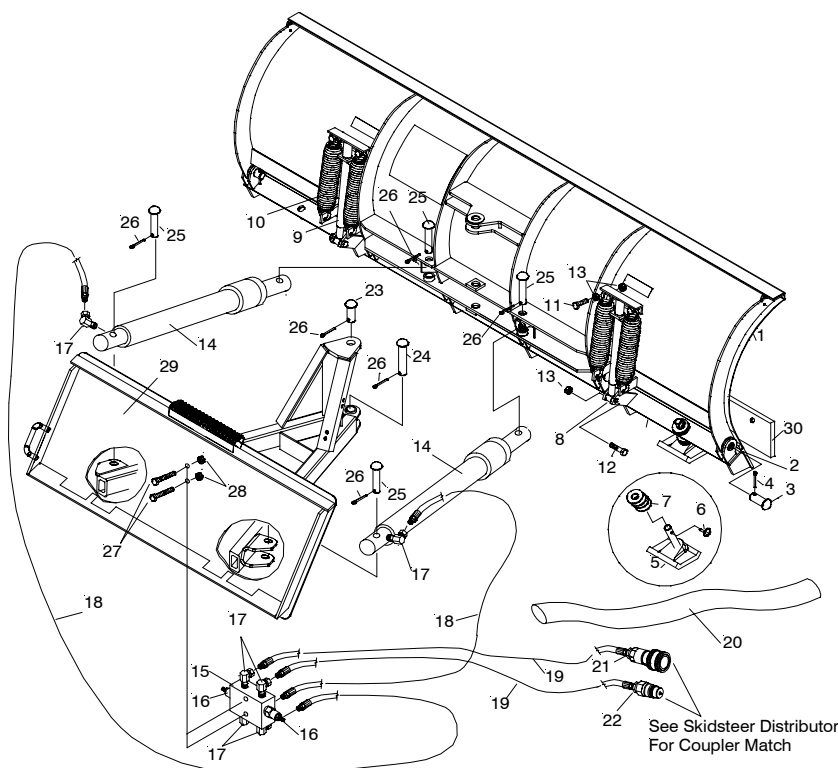


Skidsteer Blade Assembly

6.0' thru 9.0'



Parts List

Item	84059 (6.0) Part No.	84057 (6.5) Part No.	84058 (7.0) Part No.	84050 (7.5) Part No.	84051 (8.0) Part No.	84052 (8.5) Part No.	84053 (9.0) Part No.	Qty.	Description
1	84069	84067	84068	84060	84061	84062	84063	1	Moldboard Weld
2	84077	84075	84076	84070	84071	84072	84073	1	• Trip Edge
3	811000003003	811000003003	811000003003	811000003003	811000003003	811000003003	811000003003	6	• Pin 1-3/16 x 2-13/16"
4	20420	20420	20420	20420	20420	20420	20420	6	• Cotter Pin 1/4 x 2"
5	84040	84040	84040	84040	84040	84040	84040	2	• Wear Shoe Assy.
6	811000224	811000224	811000224	811000224	811000224	811000224	811000224	2	• Lynch Pin 5/16"
7	20361	20361	20361	20361	20361	20361	20361	20	• Washer 1"
8	811000254	811000254	811000254	811000254	811000254	811000254	811000254	2	• Spring Adjuster Assy.
9	811000251	811000251	811000251	811000251	811000251	811000251	811000251	2	• Spring Bar Assy.
10	12978	12978	12978	12978	07017	07017	07017	4	• Trip Spring
11	20141	20141	20141	20141	20141	20141	20141	4	• Bolt H 5/8-11 x 2" Gr.5
12	20143	20143	20143	20143	20143	20143	20143	2	• Bolt H 5/8-11 x 2-1/2" Gr. 5
13	20318	20318	20318	20318	20318	20318	20318	10	• Nut Eslok 5/8-11
14	08805	08805	08805	08805	08805	08805	08805	1	Common Attaching Kit
	817000020	817000020	817000020	817000020	817000020	817000020	817000020	2	• 1-1/2" x 10" Angle Cylinder
15	15915	15915	15915	15915	15915	15915	15915	1	• Skid Steer Hydraulic Assy.
16	15913	15913	15913	15913	15913	15913	15913	1	• • 1/4" NPT Manifold
17	15914	15914	15914	15914	15914	15914	15914	2	• • 3800 P.S.I. Relief Valve
18	22410	22410	22410	22410	22410	22410	22410	6	• • 1/4" x 90° Swivel Adapter
19	22411	22411	22411	22411	22411	22411	22411	2	• • 1/4" x 32" Hose
20	22412	22412	22412	22412	22412	22412	22412	2	• • 1/4" x 90° Hose
21	22413	22413	22413	22413	22413	22413	22413	1	• • 42" Protective Cover
22	22414	22414	22414	22414	22414	22414	22414	1	• • 1/2" x 1/4" Red. Bushing
	22415	22415	22415	22415	22415	22415	22415	1	• • 1/2" x 1/4" Red. Bushing w/.054 orifice
23	08806	08806	08806	08806	08806	08806	08806	1	• Hardware Bag
24	811000003003	811000003003	811000003003	811000003003	811000003003	811000003003	811000003003	1	• • Upper Pivot Pin
25	811000003008	811000003008	811000003008	811000003008	811000003008	811000003008	811000003008	1	• • Pivot Pin
26	819000001005	819000001005	819000001005	819000001005	819000001005	819000001005	819000001005	4	• • Cylinder Pin
27	20420	20420	20420	20420	20420	20420	20420	6	• • Cotter Pin 1/4" x 2"
28	20032	20032	20032	20032	20032	20032	20032	2	• • Bolt H 5/16-18 x 2-1/4"
29	20304	20304	20304	20304	20304	20304	20304	2	• • Locknut Esna 5/16-18
30	81029	81029	81029	81029	81029	81029	81029	1	Push Frame
	8CE6.0	8CE6.5	8CE7.0	8CE7.5	8CE8.0	8CE8.5	8CE9.0	1	Cutting Edge (Optional)
	8CE/BB	8CE/BB	8CE/BB	8CE/BB	8CE/BB	8CE/BB	8CE/BB	1	Cutting Edge Bolt Bag

Parts indented are included in the assembly under which they are indented.

Diamond Equipment reserves the right, under its continuing product improvement program, to change construction or design details, specifications and prices without notice or without incurring any obligation.

INSTALLATION INSTRUCTIONS

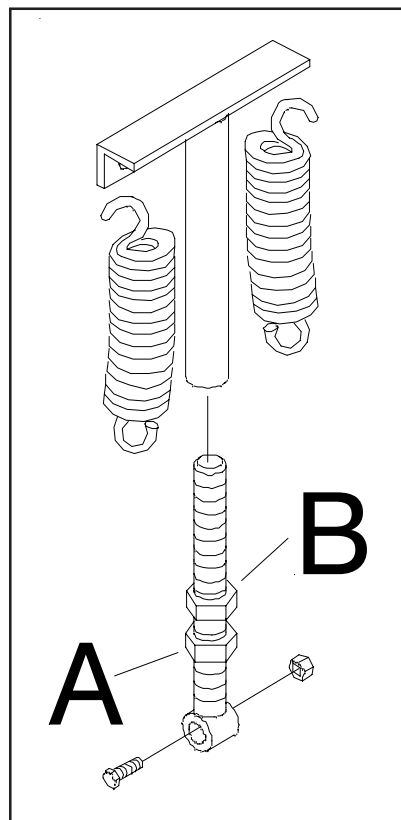
- A. Assemble Push Frame (29) to Moldboard (1) using Pins (23 & 24) along with cotter pin (26).
- B. Attach Angle Cylinder (14) to moldboard (1) using Pin (25) and cotter pin (26). Attach opposite end of Angle Cylinder (14) to Push Frame (29) using Pin (25) and cotter pin (26). Be sure hose connection on Angle Cylinder (14) is facing away from Push Frame (29).
- C. Install Skid Steer Manifold (15) to the front of Push Frame (29) using Bolt H 5/16-18 x 2-1/4" (27) and 5/16 Locknut (28). Orient Manifold (15) so that 1/4" x 32" hoses (18) are on the bottom.
- D. Route 1/4" x 32" hoses (18) to the Angle Cylinders (14) and attach using 1/4" x 90° Swivel Adapter (17). It is recommended to use a hydraulic sealant on all hydraulic thread connections.

Note: Be sure hoses and elbow connections face away from plow assembly.

- E. Hook up Plow Assembly to skidsteer. See Skidsteer owners manual for attachments.
- F. Route 1/4" x 90" hoses (19) to the skidsteer and attach couplers from your skidsteer dealer to match coupler on your skidsteer.
- G. Operate plow. It may be necessary to bleed Angle Cylinders (14) and Hoses (18 & 19) of trapped air. Loosen fittings at angle cylinders and operate plow left and right until air is out of system.
- H. If plow angles opposite of skidsteer controls, switch the male and female coupler on 1/4" x 90" Hoses (19).

CAUTION: CHECK THE TRIPEDGE ADJUSTMENT AT THIS TIME. SEE ILLUSTRATION.

- I. The Springs (10) are properly adjusted when a piece of paper can be placed between each coil.
- J. If the Trip Edge Springs need adjustment. loosen the bottom lock nut (A) on both spring assemblies. Rotate the top nut (B) until the springs are properly adjusted.
- K. Be sure to tighten the bottom lock nut (A) securely on both assemblies to the top nut (B) to prevent loosening of the assemblies.



Spring Assembly