



PARTS & INSTALLATION INSTRUCTIONS

E-60 & E-60H QUIK LIFT®

PARTS LIST

ITEM	STANDARD- UP THROUGH	LONG STROKE- MDII	QTY.	DESCRIPTION
	C-9 1-1/8" x 6" Stroke E-60	HM-9 & HM-10 1-1/8" x 8" Stroke E-60H		
1	15726	15726	1	Base & Tank Assembly
2	15706		1	• Sump Base
2	15335	15336	1	• Ram Assy. SEE ILLUSTRATION
3	15208	15206	1	• Ram Assembly 1-3/4"
4	15158	15158	1	• • Ram
5	15219	15219	1	• • Piston
6*	15162	15162	1	• • Piston Follower
7*	15125	15125	1	• • Packing Cup
8		15760	1	• • O-ring 7/16" I.D.
9	20316	20316	1	• • Spacer
10	15738	15738	1	• • Locknut 1/2-13
11*	05119	05119	1	• <u>Cover & Seal Assembly</u>
12*	15131	15131	1	• • Wiper
13	15737	15737	1	• • O-ring 3-1/2" I.D.
	08473	08473	1	• • Sleeve
14	21805	21805	1	• <u>Pressure Relief Valve Kit</u>
15	21806	21806	1	• • Reducer Bushing 1/4-1/8
16	15696	15704	1	• • Pressure Relief Valve
17	15953	15205	1	• Cylinder Tank
18	15209	15209	1	• Cylinder
19*	15198	15198	1	• Washer
20*	15131	15131	1	• O-ring 1-1/8 I.D.
21a*	15693		1	• O-ring 3-1/2 I.D.
21b*		15163	1	• O-ring 1-1/2 I.D.
22	20697	20697	3	• O-ring 1-15/16 I.D.
23	15708	15709	3	• Locknut 5/16-24
24*	21929	21929	5	• Stud
25	22129	22129	1	• Washer, Nyltite 5/16
26	15641	15641	2	• Plug w/O-ring 9/16"
27	15619	15619	1	• <u>Filter Kit 9/16"</u>
28	21999	21999	1	• • Filter
29	15695		1	• • Plug w/O-ring 9/16"
30	15729	15729	1	• Spacer Ring
31	15688	15688	2	• Pump
32	15713	15713	1	• Dowel Pins
33	15574	15574	1	• Locator
34*	15124	15124	1	• <u>Pump Check Valve</u>
35	15354	15354	1	• • O-ring 3/8 I.D.
36	15603	15603	1	• • Seat
37	15604	15604	1	• • Ball 9/32
38*	15700	15700	1	• • Spring
39	15702	15702	1	• O-ring 3/8 I.D.
40	15699	15699	1	• Ball Seat
41*	15701	15701	1	• Relief Valve
42	22118	22118	1	• O-ring "Special"
43	15703	15703	1	• Socket Set Screw
44	22119	22119	2	• Pump Mounting Plate
45	21083	21083	2	• Bolt 3/8-16 x 3-1/4" Gr. 5
46*	15122	15122	2	• Star Washer 3/8
47a*	15123	15123	1	• O-ring 1/4 I.D.
47b*	15124	15124	1	• <u>O-ring 5/16 I.D.</u>
48	15841	15841	1	• <u>O-ring 3/8 I.D.</u>
49a	15730	15730	1	• Motor - Two Terminal
49b	15892	15892	1	• <u>Cover/Motor Mount</u> - Obsolete
50	22120	22120	2	• <u>Cover/Motor Mount w/tabs</u>
51	15686	15686	1	• Cap Screw 5/16 x 3-1/4"
52*	15687	15687	1	• Pump Shaft Seal
53	15661	15661	1	• O-ring 4-3/4 I.D.
54	15659	15659	1	• "A" Solenoid Assembly
55	15660	15660	1	• • "A" Coil, Black Wire
*	15431	15431	1	• • "A" Cartridge Valve
			1	• Seal Kit, "A" Valve

ITEM	STANDARD- UP THROUGH	LONG STROKE- MDII	QTY.	DESCRIPTION
	C-9 1-1/8" x 6" Stroke E-60	HM-9 & HM-10 1-1/8" x 8" Stroke E-60H		
53a	15972	15972	1	• "A" Solenoid Assembly
54a	15905	15905	1	• • "A" Coil, Black Wire
55a	15660	15660	1	• • "A" Cartridge Valve
56	22435	22435	1	• • "A" Coil Nut
*	15431	15431	1	• • Seal Kit, "A" Valve
57	15758	15758	1	• <u>VALVE ASSY w/COUP.</u>
58	22295	22295	1	• • Forged 90 Degree Elbow
59	22293	22293	1	• • Coupler, Male Half Low Spill
60	22294	22294	1	• • Coupler, Female Half Low Spill
61	15606	15606	1	• <u>Kit-Crossover Valve</u>
62			1	• • O-ring
63			1	• • O-ring
64			1	• • Cage
65			1	• • O-ring w/Glyd. Ring
66			1	• • Poppet
67			1	• • Washer
68			1	• • Guide
69			1	• • Spring
70			1	• • Spacer
71			1	• • Disc
72			1	• • Plug
73			1	• • Adj. Screw
74			1	• • O-ring
75			1	• • Acorn Nut 9/16-18
*	15610	15610	1	• • Seal Kit-Crossover Valve (includes items 62,63,65,74)
76	15639	15639	1	• <u>Kit-Pilot Check Valve</u>
77			1	• • Ball, Steel
78			1	• • Spring
79			1	• • Plug
80	15609	15609	1	• Piston
81	15359	15359	1	• Plug Valve Block
82*	15126	15126	1	• • O-ring 9/16 I.D.
83	15697	15697	1	• <u>"B" Solenoid Assembly</u>
84	15382	15382	1	• • "B" Coil, Red Wire
85	15698	15698	1	• • "B" Cartridge Valve
*	15432	15432	1	• • Seal Kit-"B" Cartridge
86	15358	15358	1	• <u>"C" Solenoid Assembly</u>
87	15430	15430	1	• • "C" Coil, Green Wire
88	15381	15381	1	• • "C" Cartridge Valve
*	15433	15433	1	• • Seal Kit-"C" Cartridge
89	15576	15576	1	• <u>Kit-"B" Solenoid Check Valve</u>
90			1	• • Ball, 7/16
91			1	• • Spring
92	21826	21826	4	• Scr., Soc. Head 5/16-18 x 1-1/2"

NOTES:

Parts indented are included in assembly under which they are indented.

- * Parts included in Master Seal Kit Part No. 15705.
- Basic Seal Kit Part No. 15707.
- Set Crossover Relief Valve @ 3800 ± 400 P.S.I. @ 2-1/2 G.P.M.

E-60 with (1-1/4" Lift Ram Assembly)

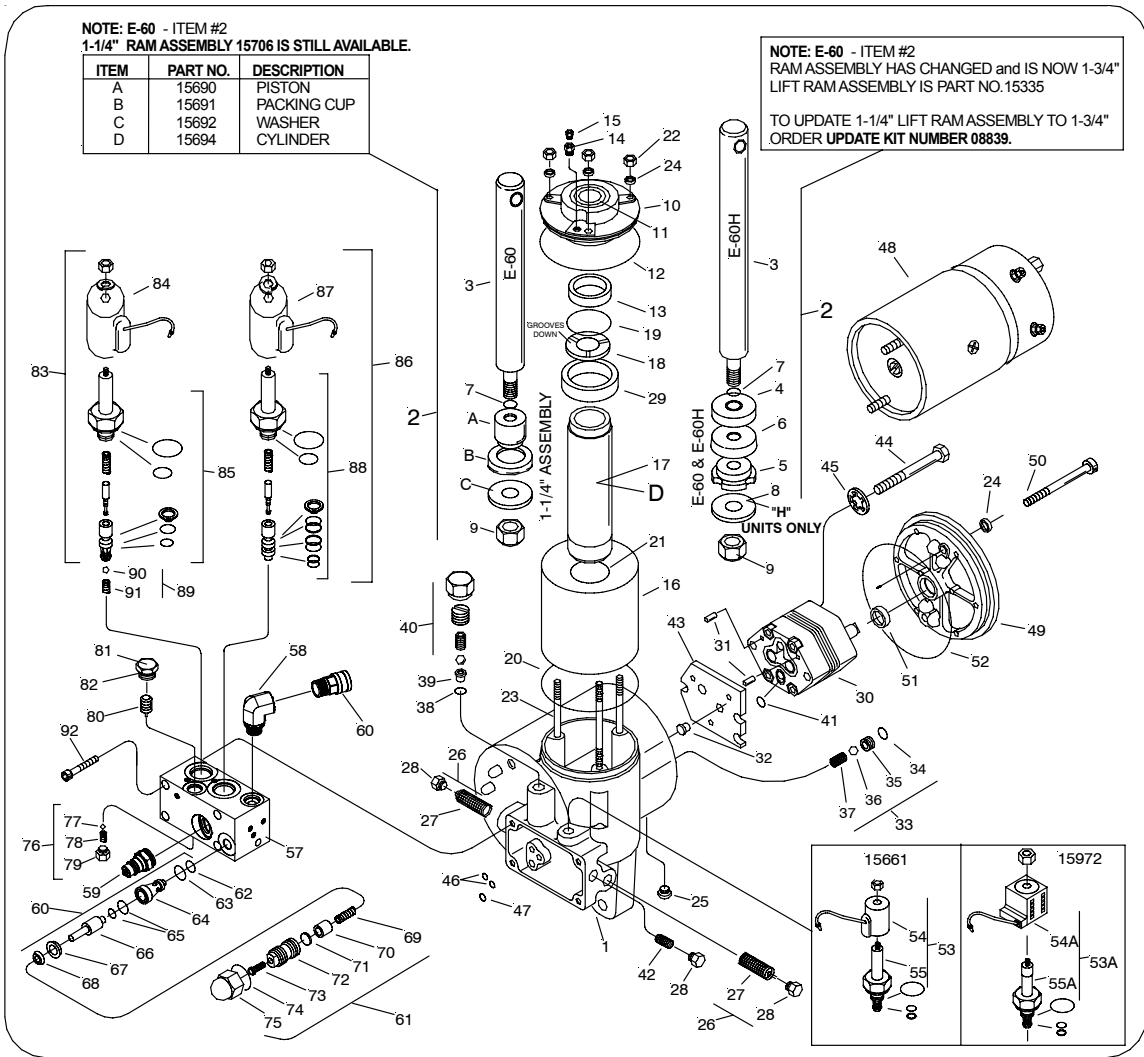
Set Pump Relief Valve @ 2500 ± 50 P.S.I. full flow @ 1.85 G.P.M.

E-60 & E-60H with (1-3/4" Lift Ram Assembly)

Set Pump Relief Valve @ 2000 ± 50 P.S.I. full flow @ 1.85 G.P.M.

Meyer Products reserves the right, under its continuing product improvement program, to change construction or design details, specifications and prices without notice or without incurring any obligation.





Note changes to items (47a - 47b) and (49a - 49b) identify part before ordering a replacement.

Note: Oil seepage, if any, at o-ring (M) is normal, Do Not attempt to stop this seepage by further tightening of the acorn nut.

Torque Specifications

	Thread Size	Torque (In. Lbs.)
Reservoir Cover		
Retaining Nuts	5/16-24	100-125
Pump Assembly		
Retaining Cap Screws	3/8-16	185 ± 5
End Plate or Valve Block		
Retaining Cap Screws	5/16-18	96-120
Motor to Pump Retaining		
Cap Screws	1/4-20	45-55
Motor Mounting Plate	5/16-18	100-125
Drain and Filter Plugs	9/16-18	75-85
"A" Coil Retainer Nut		40 ± 2

Hydraulic Fluid Capacity

Note: 1 Quart = 32 Fluid Ounces

Model E-60	
Unit	44 oz.
Hoses & 1-1/2" x 10" Cylinders	16 oz.
TOTAL	60 oz
Model E-60	
Unit	44 oz.
Hoses & 1-1/2" x 12" Cylinders	19 oz.
TOTAL	63 oz.
Model E-60H MDII	
Unit	48 oz.
Hoses & 1-1/2" x 10" Cylinders	16 oz.
TOTAL	64 oz
Model E-60H	
Unit	48 oz.
Hoses & 1-1/2" x 10" Cylinders	28 oz.
TOTAL	76 oz

Hydraulic Specifications

PUMP - Pressure Output	
E-60 (1-1/4" Lift Ram)	2500 ± 50 P.S.I.
E-60 & E-60H (1-3/4" Lift Ram)	2000 ± 50 P.S.I.
Cross-Over Relief Valve Setting	3800 ± 400 P.S.I.

GENERAL INFORMATION

Before the Meyer Quik-Lift® unit is disassembled for repairs, make certain that all the maintenance procedures have been checked. Refer to Owner's Manual.

When the unit is to be overhauled, Master Seal Kit Part No. 15705 is required. This Kit contains all necessary Seals for rebuilding. **NOTE: DO NOT REUSE OLD O-RINGS.**

When ordering parts, furnish Type of Unit, Part No., Name and Description.

These instructions are intended as a guideline for overhaul of an E-60 Quik-Lift® unit. More detailed information covering principles of Operation, Troubleshooting, Disassembly and Repair are found in Service Manual 1-667. This is available for a nominal fee from your Meyer Distributor.

DISASSEMBLY AND INSPECTION OF UNIT

Drain fluid from unit by removing Pressure Relief Valve (15) or Drain Plug (25). Clamp Sump Base (1) firmly into vise.

1. To disassemble Cover Assembly (10), Cylinder Tank (16), Lift Cylinder (17), and Ram Assembly (2), remove the three Locknuts (22) and Nyltite Washers (24).
2. To disassemble Motor (48), remove motor end cover screws, if needed, exposing motor mounting bolts. Loosen motor mounting bolts; **DO NOT EXTRACT FROM MOTOR.**
Note: Motor end plate to be held in place. Temporarily install two 1/4-20 nuts on the motor mounting bolts to keep motor intact. Remove nuts when reinstalling motor. Remove motor.
3. To disassemble Motor Mounting Cover (49), remove Bolts (50) and Nyltite Washers (24).
4. To disassemble Pump (30) from Sump Base (1), remove Bolts (44) and Starwashers (45).
5. To disassemble Pump Mounting Plate (43), remove Plate and Locator (32).
6. Remove Pump Check Valve (33).
7. To disassemble Valve Block from Sump Base (1), remove Soc. Hd. Screws (92).

SUB ASSEMBLIES - INSPECTION

1. **COVER ASSEMBLY, TANK, RAM & CYLINDER PARTS:**
 - a) Check Cover Assembly (10), Sump Base (1), and Motor Mounting Cover (49) castings for cracks and damage.
 - b) Replace Wiper Seal (11) pressed in Cover (10).
 - c) Replace the Pump Shaft Seal (51) pressed in Motor Mounting Cover (49).
 - d) Inspect Nylon Sleeve (13), Piston (4), the Piston Follower (5) on E-60H units for excessive wear. Replace Packing Cup (6). Inspect Cylinder (17) for scoring and pitting in bore.
 - e) Inspect Ram (3) for nicks and rust.
2. **MOTOR (48)**
Note: Complete Motor Assemblies are only available from Meyer Products.
3. **PUMP (30) - DO NOT at any time disassemble this Pump. This will void the warranty.**
 - a) The damaged pump shaft seal located in the Motor Mounting Cover (49) may be removed by careful extraction with a screwdriver.

CAUTION: Do not score seal bore in mounting cover. Dip new seal in oil with spring facing upward; press into Motor Mounting Cover (49).

4. **BASE (1)**

- a) Remove and clean "A" Solenoid (53) and inspect for external damage.
- b) Test Coil (54) for electrical continuity. Nominal coil resistance is 9.6 ohms. Replace O-rings from Seal Kit Part No. 15431 contained in Seal Kit No. 15705.
- c) To reassemble, carefully guide the Coil (54) over the Valve Cartridge (55) and use the original External Brass Nut.
- d) Remove Relief Valve (40). Inspect Spring, Ball, Ball Seat (39) and O-Ring (38) for damage.
- e) Remove and clean the Filter Screen (27) using kerosene and blow out with air. Replace 1/4 I.D. O-rings (46) and 5/16 I.D. O-ring (47) from Seal Kit No. 15705.
- f) Remove Cap Plug (28) and lower adjustment screw (42). Inspect base for contamination or damage.

5. **VALVE BLOCKS**

- a) Remove items (83), (90) & (91). Clean "B" Solenoid (83) and inspect for damage. Disassemble Cartridge Valve (85) and replace O-rings from Seal Kit No. 15432 contained in Seal Kit No. 15705.
- b) Remove and clean "C" Solenoid (86) and inspect for damage. Disassemble Cartridge Valve (88) and replace O-rings and nylon back-up rings from Seal Kit No. 15433 contained in Seal Kit No. 15705. Be certain O-rings and spacers are oriented properly.
- c) Test both Coils (84 & 87) for electrical continuity. Nominal coil resistance is 3.7 ohms.
- d) Remove Plug (81) and Piston Assembly (80) and inspect the Piston for scratches. Replace O-ring (82) from Seal Kit No. 15705.
- e) Remove Pilot Check Valve Parts (76) and inspect all parts for damage.
- f) Remove all parts of Item (61) and inspect for damage. Replace O-rings from Seal Kit No. 15705. Set adjustable crossover to 3800 ± 400 P.S.I.
- g) With parts removed from Valve Block, clean and blow out with air to remove any foreign particles in Block.

6. **UNIT REASSEMBLY**

- a) Before reassembling, make certain all components and sub-assemblies are clean and free from all dirt and other foreign material.
- b) When replacing parts, install (77), (78) & (79) before installing Piston (80) and Plug (81).
- c) **USE NEW SEALS AND M-1 FLUID WHEN REASSEMBLING THE UNIT.**
- d) Proper fluid level is 1-1/2" below filler hole. It must be checked with Lift Ram fully retracted. **NOTE: Oil seepage, if any, at O-ring (74) is normal, DO NOT attempt to stop this seepage by further tightening of the Acorn Nut.**