



PARTS & INSTALLATION INSTRUCTIONS

E-58H, E-68, E-78 & E-88 ELECTRO-LIFT® UNITS

PARTS LIST

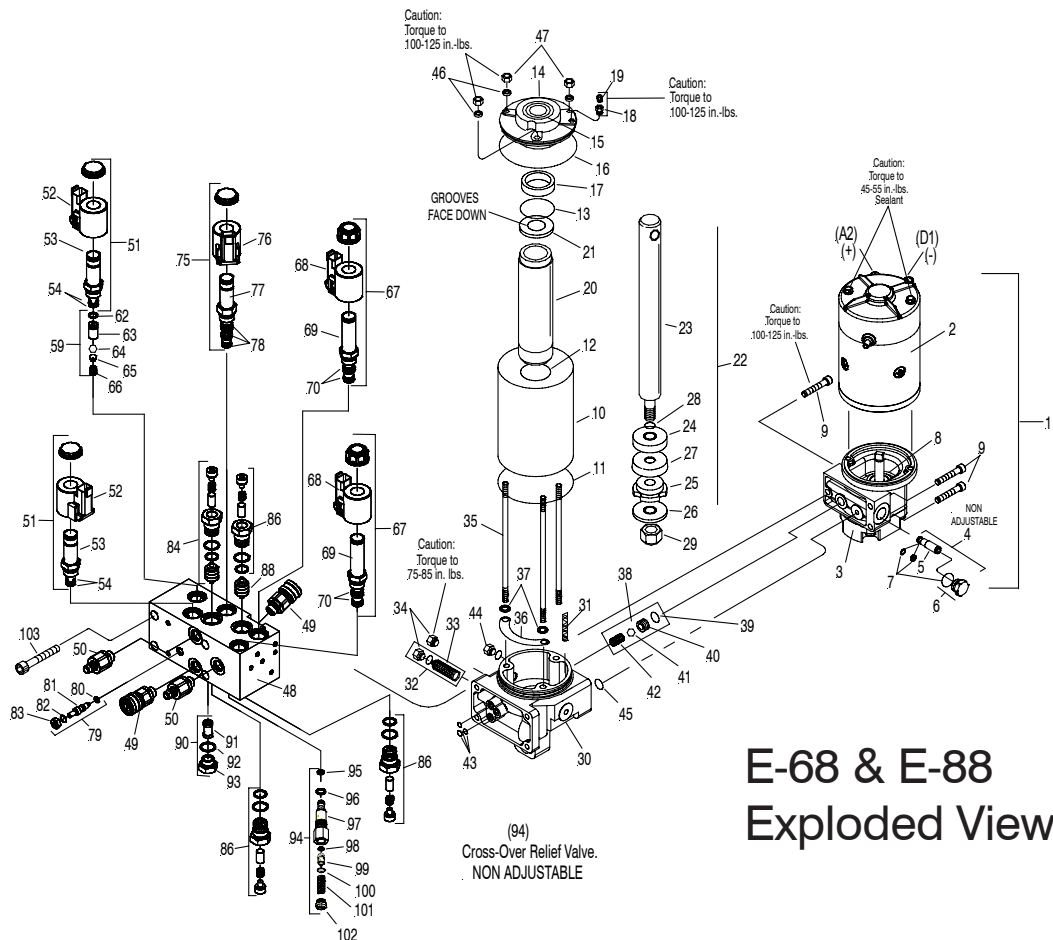
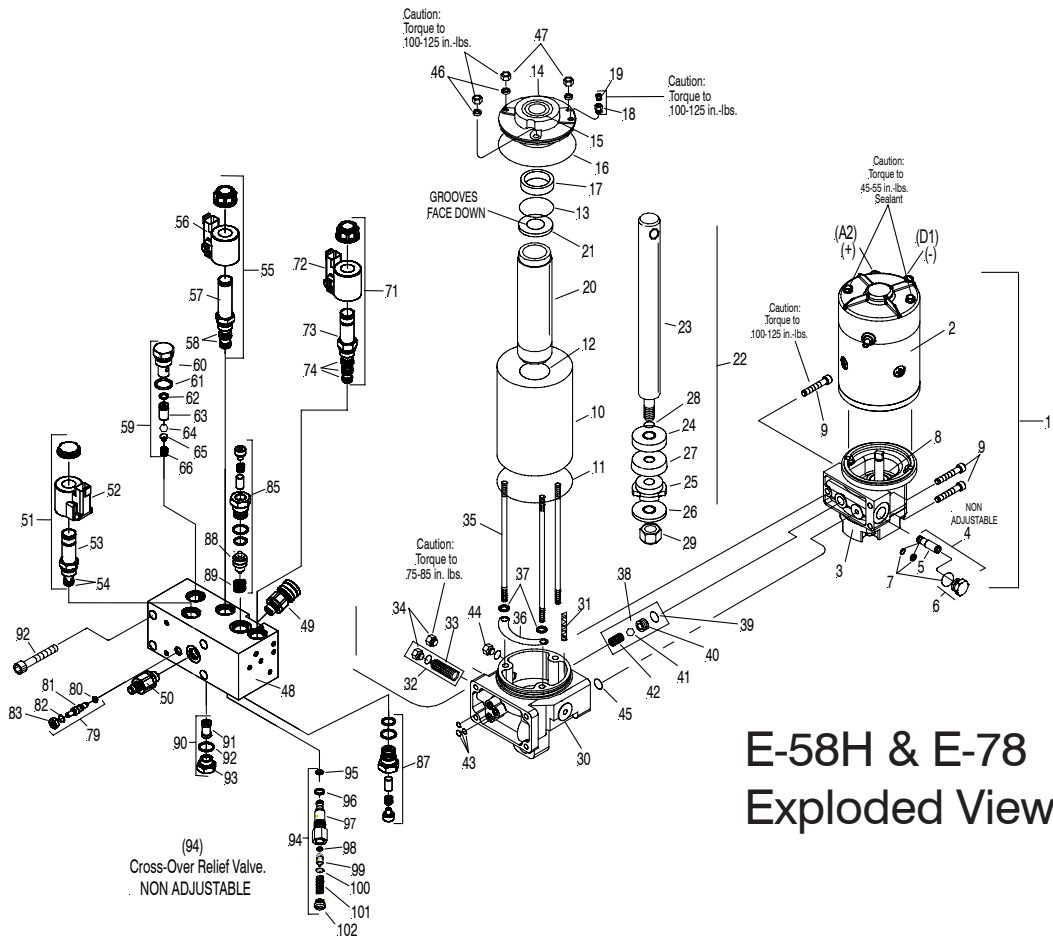
ITEM	E-58H, E-78 & E-88	QTY	DESCRIPTION
1	15869	1	Pump & Motor Assy. (12 volt)
2	15727	1	• Motor - 12 Volt (2 Terminal)
3	15889	1	• Pump Assy.
4	15874	1	•• Kit - Pump Relief Valve
5	15870	1	•• Relief Valve Assy.
6	15878	1	•• Plug w/O-Ring
7*	15875	1	Seal Kit Relief Valve
8	15877	1	Pump Shaft Seal
9	22339	3	Soc. Head 5/16-18 x 1-3/4"
10	15204	1	Cylinder Tank
11*	15131	1	O-Ring 3-1/2 I.D.
12*	15163	1	O-Ring 1-15/16 I.D.
13*	15198	1	O-Ring 1-1/8 I.D.
14	15738	1	Cover & Seal Assy.
15*	05119	1	• Wiper
16*	15131	1	• O-Ring 3-1/2 I.D.
17	15737	1	• Sleeve
	08473	1	Pressure Relief Valve Kit
18	21805	1	• Reducer Bushing 1/4 x 1/8
19	21806	1	• Pressure Relief Valve
20	15205	1	Cylinder
21	15209	1	Washer (Grooves Down)
22	15761	1	Ram Assembly
23	15206	1	• Ram
24	15158	1	• Piston
25	15219	1	• Piston Follower
26	15760	1	• Spacer
27*	15162	1	• Packing Cup
28*	15125	1	• O-Ring 7/16 I.D.
29	20316	1	• Locknut 1/2-13
30	15980	1	Base & Strainer Assy.
31	15326	1	• Strainer
32	15641	1	• Filter Kit - 9/16"
33	15619	1	•• Filter
34	21999	1	•• Plug w/O-Ring - 9/16"
35	15203	3	Stud
36	15621	1	Baffle
37	21980	2	Retainer Ring
38	15574	1	Pump Check Valve Kit
39*	15124	1	• O-Ring 3/8 I.D.
40	15354	1	• Seat
41	15603	1	• Ball, 9/32
42	15604	1	• Spring
43*	15122	3	O-Ring 1/4 I.D.
44	21999	2	Drain Plug w/O-Ring - 9/16"
45*	15127	1	O-Ring 5/8 I.D.
46*	21929	3	Washer, Nylite 5/16
47	20697	3	Locknut 5/16 - 24

ITEM	E-58H & E-78	E-88	QTY	DESCRIPTION
48	15612	15941	1	• Valve Assy. w/Coup. (12V)
49	-----	22445	2	• Coupler, Female Half
49	22445	-----	1	• Coupler, Female Half
50	-----	22442	2	• Coupler, Male Half
50	22442	-----	1	• Coupler, Male Half
51	15925	15925	1	"A" Solenoid Assembly
52	15916	15916	1	•• Coil (12V)
53	15917	15917	1	•• "A" Cartridge Valve
54	15928	15928	1	••• Seal Kit, "A" Valve
55	15926	15925	1	"B" Solenoid Assembly
56	15916	15916	1	•• Coil (12V)
57	15918	15917	1	•• "B" Cartridge Valve
58	15929	15928	1	••• Seal Kit, "B" Valve
59	15959	15959	1	• Kit- "B" Check Valve
60	-----	-----	1	•• "B" Check Valve Nut
61	-----	-----	1	•• O-ring
62	-----	-----	1	•• O-ring
63	-----	-----	1	•• "B" Valve Check Body
64	-----	-----	1	•• "B" Valve Check Ball
65	-----	-----	1	•• Ball holder
66	-----	-----	1	•• Spring
67	-----	15926	2	"C" & "D" Solenoid Assembly
68	-----	15916	1	•• Coil (12V)
69	-----	15918	1	•• "C" & "D" Cartridge Valve
70	-----	15929	1	••• Seal Kit "C" & "D" Cartridge
71	15987	-----	2	"C" Solenoid Assembly
72	15916	-----	1	•• Coil (12V)
73	15958	-----	1	•• "C" Cartridge Valve
74	15930	-----	1	••• Seal Kit "C" Cartridge
75	-----	15927	1	"E" Solenoid Assembly
76	-----	15916	1	•• Coil (12V)
77	-----	15919	1	•• "E" Cartridge Valve
78	-----	15930	1	••• Seal Kit "E" Cartridge
79	15950	15950	1	Kit Needle Valve (Lower Adj.)
80	-----	-----	1	• O-ring
81	-----	-----	1	• Needle Valve
82	-----	-----	1	• Needle Valve Retaining Ring
83	-----	-----	1	• Nut M6 x 1/2" nut
84	-----	15965	2	• Kit Dual PO Check Valve
85	15965	-----	1	• Kit Dual PO Check Valve
86	-----	15944	2	•• Check Valve Assembly
87	15944	-----	2	•• Check Valve Assembly
88	15943	15943	1	•• P.O. Pilot Spool
89	15999	-----	1	•• Spring
90	15951	15951	1	Kit P.A. Block Filter
91	15936	15936	1	• Tank Filter
92	15938	15938	1	• O-ring
93	15937	15937	1	• M16 x 1 Filter Cap
94	15974	15974	1	• Kit-Crossover Valve
95	-----	-----	1	•• O-ring
96	-----	-----	1	•• O-ring
97	-----	-----	1	•• Body
98	-----	-----	1	•• O-ring w/Glyd. Ring
99	-----	-----	1	•• Poppet
100	-----	-----	1	•• Washer
101	-----	-----	1	•• Spring
102	-----	-----	1	•• Plug
*	15975	15975	1	•• Seal Kit-Crossover Valve (includes items 95,96,98)
103	21826	21826	4	Soc. Head 5/16-18 x 1-1/2"

Parts indented are included in assembly under which they are indented.
 *Parts included in Master Seal Kit Part No. 15969 (E-58H & E-78),
 15978 (E-68 & E-88)
 Basic Seal Kit Part No. 15254
 Pump Relief Valve @ 2000 ± 50 P.S.I. full flow. **Non Adjustable**
 Crossover Relief Valve @ 3800 ± 400 P.S.I. @ 2-1/2 G.P.M. **Non Adjustable**

Meyer Products Inc.
 18513 Euclid Ave. • Cleveland, Ohio 44112-1084
 Phone 486-1313 (Area Code 216)
 email • warranty@meyerproducts.com

Meyer New England
 6 Angell Lane • Damariscotta, ME 04543-9720
 Phone 563-2227 (Area Code 207)
 www.diamondplow.com • email info@diamondplow.com



GENERAL INFORMATION

Before the Meyer Electro-Lift® unit is disassembled for repairs, make certain that all the maintenance procedures have been checked; refer to Owner's Manual. When the unit is to be overhauled, Master Seal Kit Part No. 15969 (E-58H & E-78) or 15978 (E-68 & E-88) is required. This Kit contains all necessary Seals for rebuilding.

These instructions are intended as a guideline for overhaul of an E-58H, E-68, E-78 & E-88 Electro-Lift® unit.

When ordering parts, furnish Type of Unit, Part No., Name and Description.

More detailed information covering principles of Operation, Troubleshooting, Disassembly and Repair are found in Electro-Lift® Service Manual 1-822. This is available for a nominal fee from your Meyer Distributor.

DISASSEMBLY AND INSPECTION OF UNIT

NOTE: DO NOT REUSE OLD O-RINGS.

Drain fluid from the unit by removing Pressure Relief Valve (19) and Drain Plug (44). Clamp Sump Base (30) firmly into vise.

1. To disassemble COVER ASSEMBLY, TANK, RAM & CYLINDER PARTS, remove three Locknuts (47).
2. To disassemble MOTOR from PUMP, loosen Motor mounting bolts, but DO NOT REMOVE bolts from motor housing.
Note: Motor end plate to be held in place. Temporarily install two 1/4-20 nuts on the motor mounting bolts to keep motor intact. Remove nuts when reinstalling Motor to pump.
3. To disassemble Pump from Base, remove three Soc. Hd. Screws (9).
4. To disassemble VALVE BLOCK from BASE, remove Soc. Hd. Screws (90).

SUBASSEMBLIES - INSPECTION

1. COVER ASSEMBLY, TANK, RAM & CYLINDER PARTS:

- a) Check Cover (14), and Base (30) castings for cracks and damage.
- b) Replace Wiper Seal (15) pressed in Cover (14).
- c) Inspect Sleeve (17), Piston (24), the Piston Follower (25), Spacer (26) for excessive wear. Replace Packing Cup (27). Inspect Cylinder (20) for scoring and pitting in bore.
- d) Inspect Ram (23) for nicks and rust.

2. MOTOR - Two Terminal (2)

Note: Complete Motor Assemblies are only available from Meyer Products. The only service parts available are a Brush Kit 15854.

3. PUMP (3)

DO NOT at any time disassemble this Pump. This will void the warranty.

- a) A damaged pump drive Shaft Seal (8) may be removed by careful extraction with a pointed tool. Dip new Seal in oil and with lip down, press into Pump Housing flush to 1/32 inch below face of boss.

4. BASE (30)

- a) Remove (32) and clean the Filter Screen (33) using kerosene and blow out with air. Replace O-rings (34) from Seal Kit No. 15978.

5. VALVE BLOCK (48)

- a) Clean "A" & "B" Catridge and inspect for damage. Replace O-rings from Seal Kit No. 15928 or 15929 (E-58H "B") contained in Master Seal Kit No. 15969 or 15978.
- b) Remove and clean "C" & "D" (E-68 & E-88 only) Solenoid and inspect for damage. Replace O-rings and nylon back-up rings from Seal Kit No. 15930 (E-58H & E-78) 15929 (E-68 & E-88) contained in Seal Kit No. 15969 or 15978. Be certain O-rings and spacers are oriented properly.
- c) Test all Coils for electrical continuity. Nominal Coil resistance is 8.3 ohms.
- d) Remove Pilot Check Valves and Piston Assemblies and inspect the Piston for scratches. Replace O-rings from Master Seal Kit No. 15969 or 15978.
- e) Remove all parts of Item (94) and inspect for damage. Replace O-rings from Cross-Over Seal Kit No. 15975.
- f) With parts removed from Valve Block, clean and blow out with air to remove any foreign particles in Block.

6. UNIT REASSEMBLY

- a) Before reassembling, make certain all components and sub-assemblies are clean and free from all dirt and other foreign material.
lubricate all orings with M-1 oil during assembly.
Coat all bolt threads with a anti-sieze lubricant prior to reassembly.
- b) Motor mounting bolts must be sealed with Permatex or an all weather type sealant.
- c) **USE NEW SEALS AND M-1 FLUID WHEN REASSEMBLING THE UNIT.**
- d) Proper fluid level is 1-1/2" below filler hole. It must be checked with Lift Ram fully retracted.

IMPORTANT: Hydraulic Unit is to be stored in the off season with the Lift Ram in the "UP" position.

NOTES:

1. * Parts included in Master Seal Kit Part No. 15969 (E-58H & E-78), 15978 (E-68 & E-88)
2. Basic Seal Kit Part No. 15254
3. Pump Relief Valve @ 2000 ± 50 P.S.I. full flow. **Non Adjustable**
4. Crossover Relief Valve @ 3800 ± 400 P.S.I. @ 2-1/2 G.P.M. flow. **Non Adjustable**

Meyer Products and Diamond Equipment reserves the right, under its continuing product improvement program, to change construction or design details, specifications and prices without notice or without incurring any obligation.