



FISHER ENGINEERING

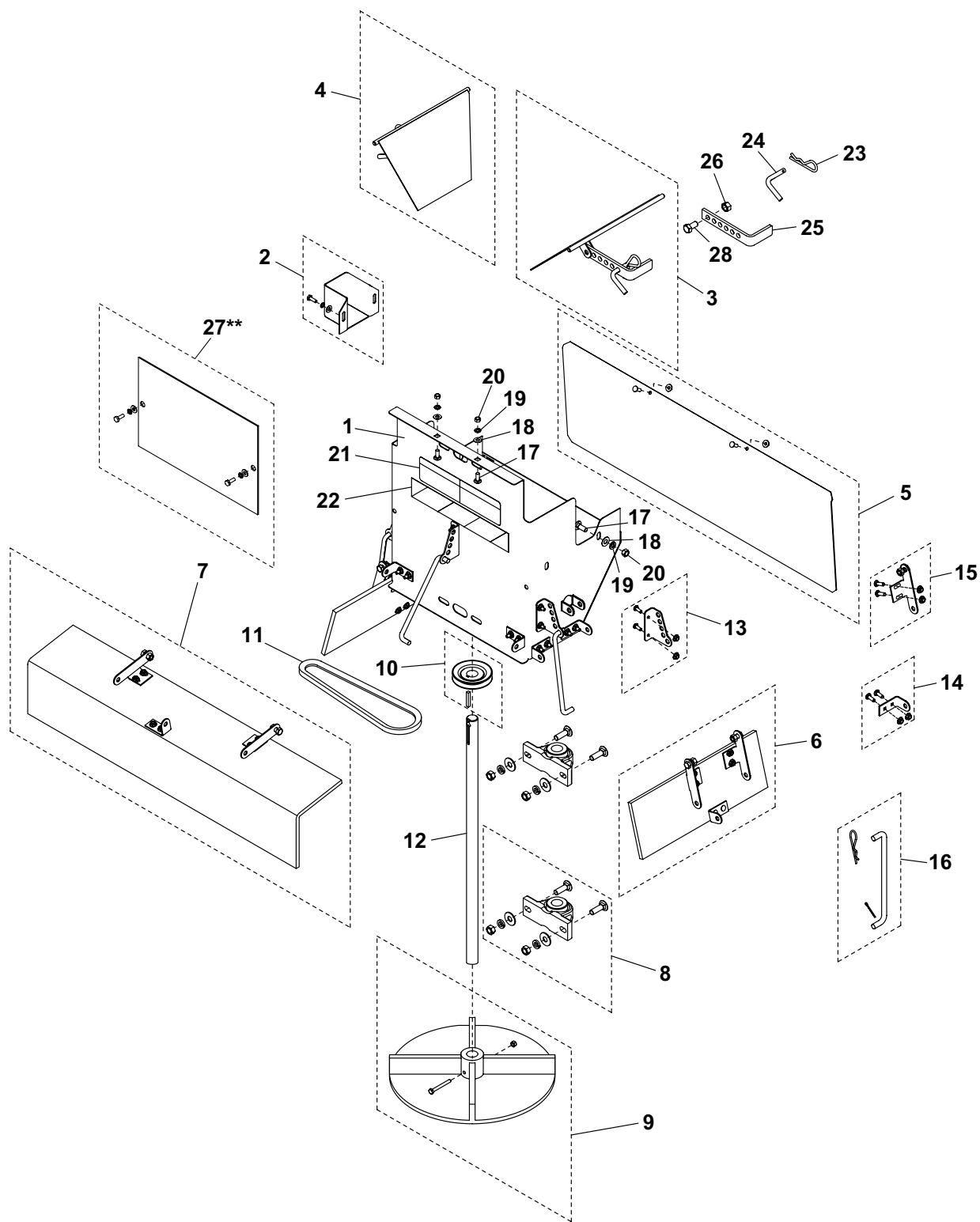
P.O. Box 529, Rockland, ME 04841

# PRO-CASTER™ Center Belt Drive Chute Assembly Parts List

95424, 95425, 95426, 95427

March 3, 2005

Lit. No. 95491



This parts list is for FISHER® PRO-CASTER Hopper Spreaders with serial numbers 0303 and higher.

## PRO-CASTER™ Center Belt Drive Chute Assembly Parts List

<b>PRO-CASTER Center Belt Drive Chute Assembly Parts Numbers</b>			
Part	Description	Part	Description
95424	14" Mild Steel, Belt Drive	95426	26" Mild Steel, Belt Drive
95425	14" Stainless Steel, Belt Drive	95427	26" Stainless Steel, Belt Drive

<b>PRO-CASTER Center Belt Drive Chute Assembly Parts List</b>							
Item	Part	Qty	Description	Item	Part	Qty	Description
1*		1	Chute Housing	13	94887	3	Adjustment Bracket Kit
2	95478	1	Output Guard Kit, Mild Steel	14	94888	9	Baffle Tab Kit
2	95479	1	Output Guard Kit, Stainless Steel	15	95234	6	Hinge Kit, Rear and Side Baffles
3	95480	1	Internal Baffle Passenger Side Kit, Mild Steel	16	94889	3	Baffle Adjustment Rod Kit
3	95481	1	Internal Baffle Passenger Side Kit, Stainless Steel	17	95569	4	3/8"-16 x 1" Carriage Bolt, Stainless Steel
4	95482	1	Internal Baffle Driver Side Kit Mild Steel	18	91123	4	3/8" Plain Washer, Stainless Steel
4	95483	1	Internal Baffle Driver Side Kit Stainless Steel	19	91282	4	3/8" Lock Washer, Stainless Steel
5	95484	1	Front Deflector Kit, Mild Steel	20	91431	4	3/8"-16 Hex Nut, Stainless Steel
5	95485	1	Front Deflector Kit, Stainless Steel	21	68595	1	Label – Information (Control)
6	95486	2	Side Deflector Kit	22	68737	1	Reflective Strip (Red/White)
7	95487	1	Rear Deflector Kit	23	91959	5	3/32" x 2-1/4" Hairpin Cotter
8	95488	2	Bearing Kit, Chute	24	9201	2	Adjustment Pin
9	94513	1	Spinner Service Kit, 14.5" Poly	25	9198	2	Baffle Handle, Mild Steel
10	95489	1	Pulley Kit, Chute	25	20101	2	Baffle Handle, Stainless Steel
11	95418	1	Belt	26	67368	2	3/8"-16 Hex Jam Locknut, Stainless Steel
12	95420	1	Shaft, 14" Chute	27**	95505	1	Access Panel Kit, Mild Steel
12	95421	1	Shaft, 26" Chute	27**	95506	1	Access Panel Kit, Stainless Steel
				28	91015	2	3/8"-16 x 1" Hex Cap Screw, Stainless Steel

\* = Not Available as a Service Item

\*\* = 26" Chutes Only

Copyright © 2005 Douglas Dynamics, L.L.C. All rights reserved. This material may not be reproduced or copied, in whole or in part, in any printed, mechanical, electronic, film or other distribution and storage media, without the written consent of Fisher Engineering. Authorization to photocopy items for internal or personal use by Fisher Engineering outlets or spreader owner is granted.

Fisher Engineering reserves the right under its product improvement policy to change construction or design details and furnish equipment when so altered without reference to illustrations or specifications used. Fisher Engineering and the vehicle manufacturer may require and/or recommend optional equipment for spreaders. Do not exceed vehicle ratings with a spreader. Fisher Engineering offers a limited warranty for all spreaders and accessories. See separately printed page for this important information. The following are registered (®) and unregistered (™) trademarks of Douglas Dynamics, L.L.C.: FISHER®, PRO-CASTER™.

Printed in U.S.A.