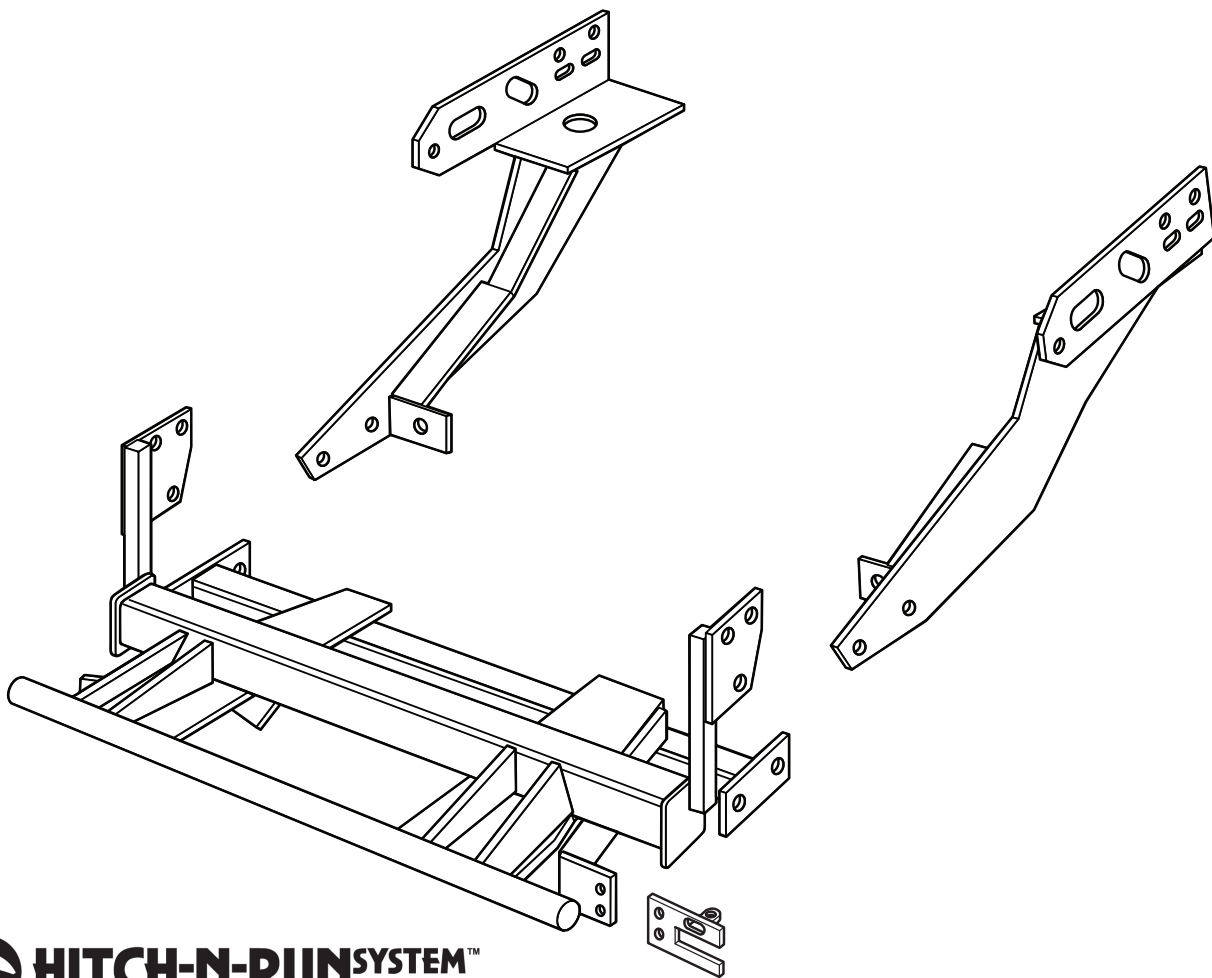




# SNO-PRO<sup>®</sup> 3000

**1972 - 1993 Dodge 1500, 2500, 3500  
(4 x 4 With Plow Prep. ONLY)**

**Vehicle Mounting Kit: 1FK11**



Curtis Industries Inc. LLC, 111 Higgins St., Worcester, MA 01606 TEL: (800) 343-7676 FAX: (508) 854-3377 For Parts and information visit us at [www.Curtisindustries.net](http://www.Curtisindustries.net)  
Curtis Industries Inc. LLC, reserves the right to change product design or specifications without notice or liability.  
Curtis Snow Plows are protected by the following U.S. Patent Numbers: 6,145,222 and 6,209,231 Licensed under U.S. Patent Number 5,568,694 & Canadian Patent Number 2,137,853.  
Other patents pending.

## 1FK11 Vehicle Mount Kit Parts List

Item #	Description	Qty.
1	Mounting Frame	1
2	Driver's Side Push Arm	1
3	Passenger's Side Push Arm Plated	1
<b>Hardware Bag Components Included In This Kit</b>		
4	1/2"-13 x 1-1/2" Bolt, Gr. 5, Cad., Plated	4
5	1/2" Lockwasher, Cad., Plated	4
6	1/2"-13 Hex Nut, Cad., Plated	4
7	5/8"-11 x 1-1/2" Bolt, Gr. 5, Cad., Plated	4
8	5/8"-11 x 2-1/2" Carriage Bolt, Gr. 5	2
9	5/8" Flat Washer, Cad., Plated	2
10	5/8" Lockwasher, Cad., Plated	6
11	5/8"-11 Hex Jam Nut, Cad., Plated	4
12	5/8"-11 Hex Nut, Cad., Plated	4
<b>Hardware Components Included In Plow Light Harness Kit</b>		
1a	Plug Mount Bracket	1
-	10-32 x 3/4" Hex Head Screw, Plated	2
-	10-32 Nylock Lock Nut, Plated	2
-	8-32 x 1" Hex Head Screw, Plated	1
-	8-32 Nylock Lock Nut, Plated	1
-	#8 Nylon Flat Washer, 3/4" O.D.	1
-	#8 Flat Washer, SAE, Plated	1



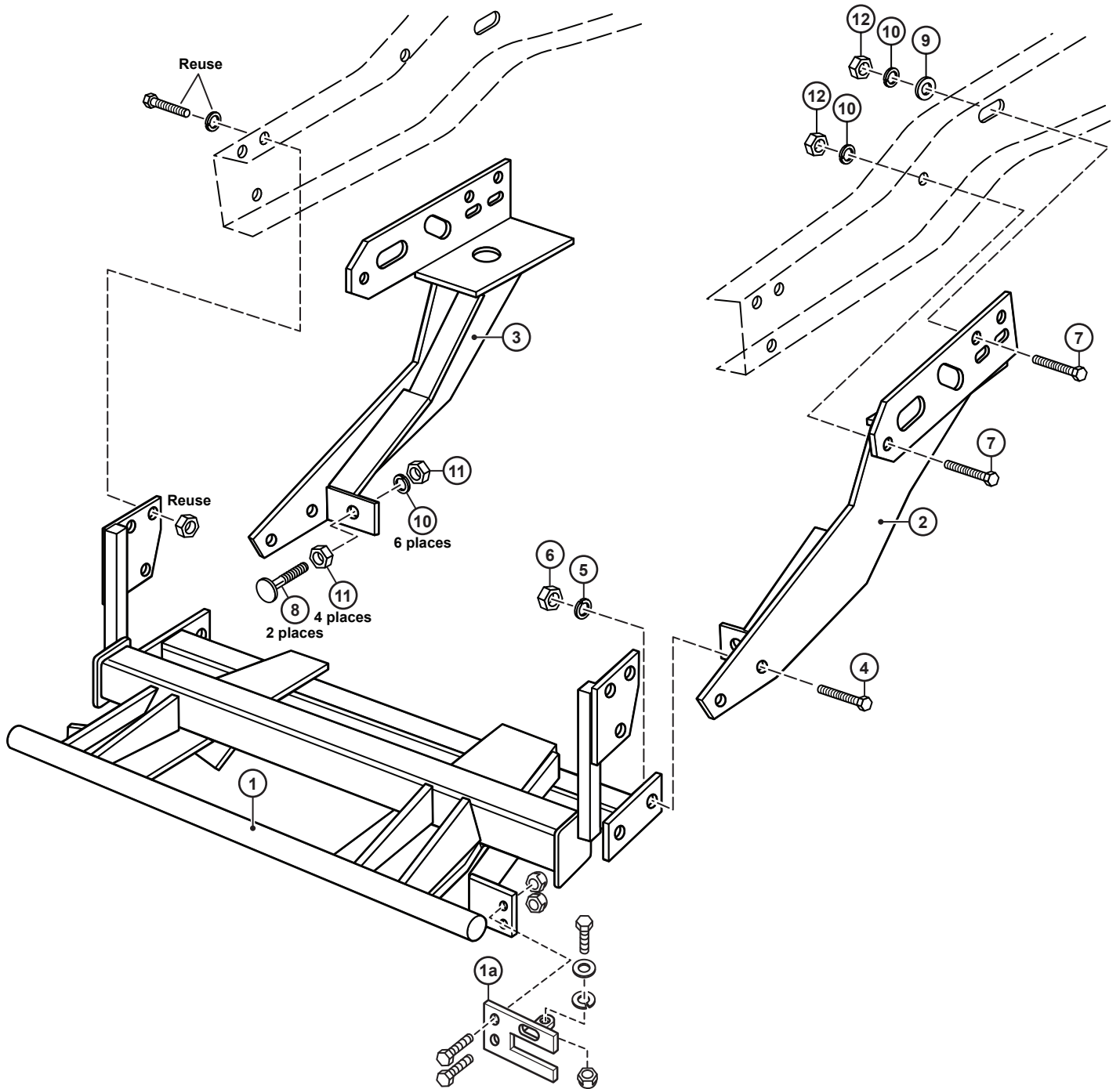
### WARNING

It is highly recommended that front "helper springs", "airshocks", or other similar devices be installed onto this vehicle to prevent the front suspension from "bottoming out" while carrying a snow plow.

Vehicle must be properly "ballasted" by placing ballast weight behind the centerline of Rear Axle so that no more than 62% of the total weight of the Vehicle, Snow Plow, Driver, Ballast weight, (and any cargo) is placed on the Front Axle while at the same time not exceeding the Gross Vehicle Weight Rating and Front or Rear Gross Axle Weight Ratings.



# 1FK11 Mounting



**Curtis Industries, LLC. reserves the right to change product design or specifications without notice or liability. Curtis Snow Plows and Truck equipment should only be used on vehicles equipped with the manufacturer's Snow Plow preparation package. Snow Plowing without the original snow plow preparation package may damage your vehicle and the added weight of the equipment may impair the operation and control of the vehicle.**

# 1FK11: 1972 - 1993 Dodge 1500, 2500, 3500

## Mounting Kit Installation Instructions

### 1. VEHICLE PREPARATION

- (1a.) **VEHICLES WITH SWAY BAR:** Place a jack under the transmission cross member and lift the front up until the front tires are off the ground. Place jack stands under vehicle frame to prevent unintentional lowering of vehicle. (If the vehicle does not have a sway bar, it does not need to be lifted up.) If the vehicle has an air dam, either remove it completely, or cut a 35" long section out of the center of it. Remove and save the three 7/16" bolts, washers, and nuts holding the bumper bracket to the front of each frame rail.
- (1b.) **VEHICLES WITH DIESEL ENGINES:** Remove and discard the "bolt on" bumper bracket stiffeners and fasteners holding them onto the bumper brackets and frame rails.
- (1c.) **ALL VEHICLES:** Remove and set aside the front bumper and bumper brackets as an assembly.
- (1d.) **VEHICLES WITH V6 ENGINES:** Remove and save the two 3/8" hex nuts from the two motor mount bracket bolts located just behind the motor mount cross member on the outside of each frame rail.
- (1e.) **ALL VEHICLES:** Screw a 5/8"-11 hex jam nut (11) all the way onto each of the 5/8"-11 x 2-1/2" carriage bolts (8). Place each carriage bolt/ jam nut assembly into the push ears of the rear push arms (2 & 3) with the heads of the carriage bolts toward the front of the vehicle. Fasten loosely using a 5/8"-11 hex jam nut (11) and 5/8" lock washer (10) on each carriage bolt / jam assembly



**NOTE**

All fasteners should remain loose or "finger tight" until all components have been attached to vehicle or installation instructions specify tightening.

### 2. FRONT MOUNTING FRAME

Lift the front mounting frame (1) up and slide the driver's and passenger's side front hangers into the "C" shaped frame rails on the front of the vehicle. Place the vehicle front bumper assembly back onto the frame rails. Line up the three holes in each front hanger of the mounting frame (1) with the corresponding holes in each frame rail and bumper bracket. Attach the front hangers of the mounting frame (1) and bumper brackets to the frame rails using the original equipment 7/16" bumper bracket fasteners removed from the vehicle earlier.

### 3. DRIVER'S SIDE PUSH ARM

- (3a.) Install the rear angle section of the driver's side push arm (2) up between the sway bar (If the vehicle has one) and inside of the leaf spring to the outside surface of the frame rail. Line up the front hole in the rear angle section of the push arm (2) with the round hole through the frame rail. Fasten using a 5/8"-11 x 1-1/2" bolt (7), 5/8" lock washer (10) and 5/8"-11 hex nut (12).
- (3b.) **VEHICLES WITH V8, INLINE 6, OR DIESEL ENGINES:** Line up the middle 11/16" dia. hole in the rear angle section of the push arm (2) with the slotted hole in the vehicle frame rail. Fasten using a 5/8"-11 x 1-1/2" bolt (7), 5/8" flat washer (9), 5/8" lock washer (10), and 5/8"-11 hex nut (12).



**NOTE**

On some models and some model years, this hole does not line up with the slotted hole in the frame rail. If this is the case, a hole will have to be drilled and a fastener installed at a later step in the installation.

- (3c.) **VEHICLES WITH V6 ENGINES:** Reinstall the two 3/8" nuts removed earlier from the motor mount bracket bolts. A hole will have to be drilled in the frame rail and a fastener installed at a later step in the installation.
- (3d.) **ALL VEHICLES:** Line up the holes in the front end of the push arm (2) with the holes in the end plate of the rear cross tube on the mounting frame (1). Fasten using 1/2"-13 x 1-1/2" bolts (4), 1/2" lock washers (5), and 1/2"-13 hex nuts (6).

### 4. PASSENGER'S SIDE PUSH ARM

Install the passenger's side push arm (3) in the same way that the driver's side push arm was installed using the same amount and types of fasteners. Line up the holes in the front end of the push arm (12) with the holes in the end plate of the rear cross tube on the mounting frame (1). Fasten using 1/2"-13 x 1-1/2" bolts (3), 1/2" lock washers (5), and 1/2"-13 hex nuts (6).

### 5. DRILLING & TIGHTENING

- (5a.) Align the front bumper with the vehicle grill and body work then tighten the original equipment 7/16" fasteners holding the mounting frame (1) and bumper brackets to the vehicle frame rails. Hold the driver's side and passenger's side push arms (2 & 3) up tight against the bottom and outside flange of the frame rails then tighten the 5/8" fasteners holding them to the rails. Tighten the 1/2" fasteners holding the push arms (2 & 3) to the mounting frame(1).
- (5b.) **VEHICLES WITH V6 ENGINES:** Tighten the 3/8" nuts on the motor mount bracket bolts.
- (5c.) **VEHICLES WITH V/6 ENGINES AND VEHICLES THAT THE MIDDLE 11/16" DIA. HOLE IN THE PUSH ARMS DOES NOT LINE UP WITH THE HOLE IN THE FRAME RAILS:** Using the rear most 11/16" dia. hole in the rear angle section of the push arms (2 & 3) as guides, drill a 5/8" dia. hole in each frame rail. Fasten and tighten the rear angle section of the push arms to the frame rails at the drilled holes using 5/8"-11 x 1-1/2" bolts (7), 5/8" lock washers (10) and 5/8"-11 hex nuts (12).
- (5d.) **ALL VEHICLES:** Adjust the 5/8"-11 x 2-1/2" carriage bolts (8) with the front 5/8"-11 jam nuts (11) so that the heads of the carriage bolts are tight against the back of the rear cross tube of the front mounting frame (1). Lock the 5/8"-11 x 2 1/2" carriage bolts (8) in place using the rear 5/8"-11 jam nuts (11).

### 6. FINAL ADJUSTMENT AND INSPECTION

- (6a.) Check the front bumper to be certain that it is straight and aligned with the vehicle body work and grill.
- (6b.) Inspect the mounting attachment bolts to be certain that they are all in place and that they are all tight.

### 7. OPTIONAL PLUG MOUNT BRACKET INSTALL



**NOTE**

Install the Plug Mount Bracket if the harness will be mounted on the frame kit, otherwise, the harness may be routed through the grill, bumper, etc.

Using (2) 10-32 x 3/4" hex bolts and nylon locknuts, fasten the Plug Mount Bracket to the Plug Mount Bracket Mounting Tab located on the driver's side of the frame kit receiver. The included 8-32 hardware is used for mounting the hi-amp battery leads to the Plug Mount Bracket if used.