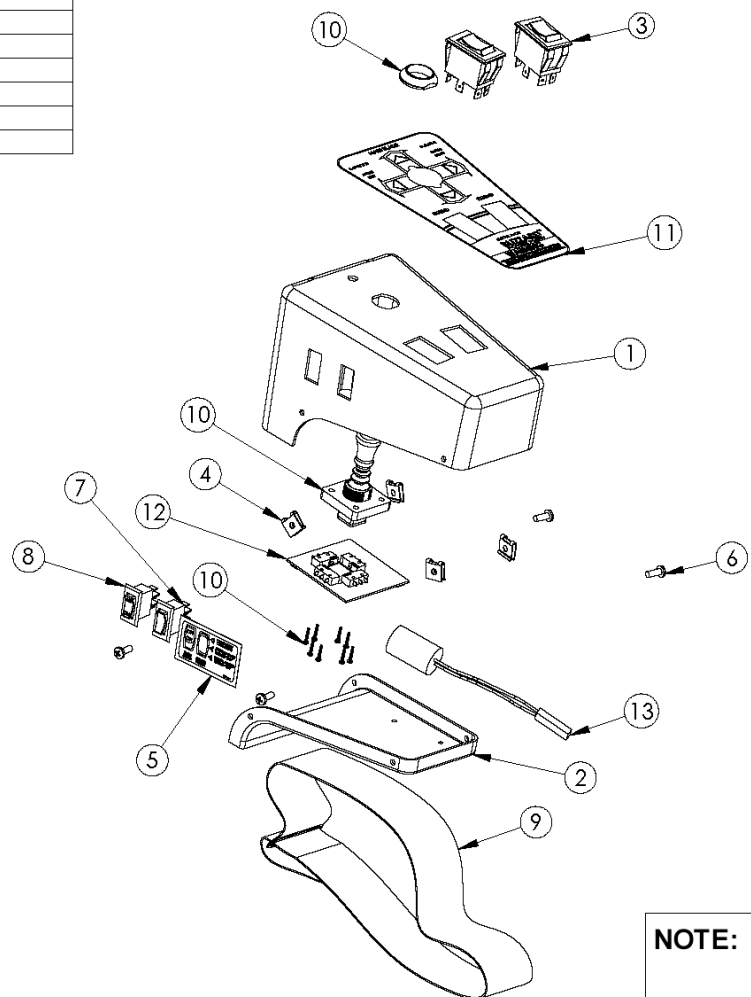


ITEM NO.	QTY.	PART NO.	DESCRIPTION
1	1	61296	TOP COVER SWITCH BOX 91296 W/J/S F/BLIZZARD PLOW FREE ISSUE
2	1	61126	BACK OF SWITCH BOX FREE ISSUE
3	2	62066	DOUBLE ACTION ROCKER SWITCH
4	4	61036	SCREW CATCH FREE ISSUE
5	1	63098	SIDE DECAL FOR BLIZZARD FREE ISSUE
6	4	61035	SCREW 10-24X1/2 PHIL PAN HD ZINC PLATED MS
7	1	62129	ROCKER SWITCH (ON-OFF-ON) CARLING RC911-RBBON
8	1	62065	ROCKER SWITCH (ON/OFF) CARLING RSCA201-VB-B-1-W
9	1	61127	VELCRO STRAP
10	1	62177	J/S 4 WAY HAPP SUBMINATURE NO SWITCHES
11	1	61169	TOP DECAL FOR BLIZZARD POWER PLOW 810 SWITCH BOX FREE ISSUE
12	1	62183	CIRCUIT BOARD FOR BLIZZARD 810 ROCKER SWITCH CONTROL BOX
13	1	62184	TIMED DELAY 0.5 SEC SSAC MSM 10.5W6 F/BLIZZARD PLOW

REV.	ZONE	DESCRIPTION	E.C.N. #	BY	DATE
A	-	INITIAL RELEASE	---	SAG	1/28/04



NOTE: PRINT REPRODUCED FOR BLIZZARD TECHNICAL SERVICE USAGE.

DRAWING NAME: BLIZZARD 810 ROCKER SWITCH CONTROL BOX W/JOYSTICK ASSY

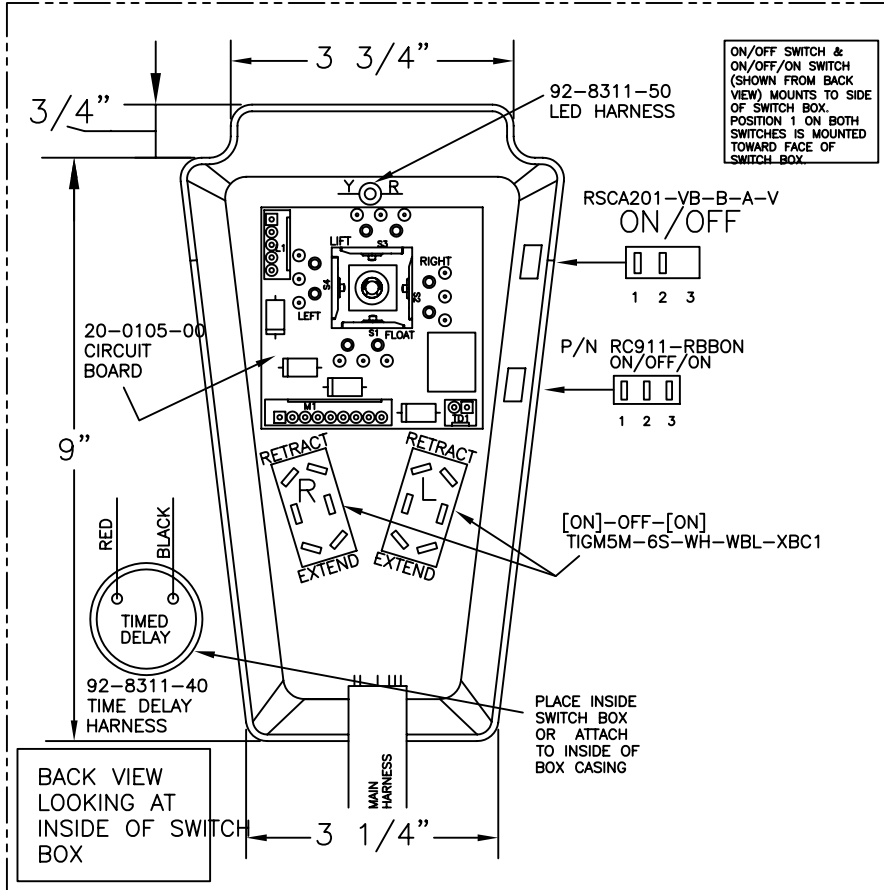
TOLERANCES ARE:
 FRACTIONS DECIMALS ANGLES
 $\pm 1/32$ $XX \pm .01$ $\pm 0^{\circ}30'$
 $XXX \pm .005$
 UNLESS OTHERWISE SPECIFIED,
 DIMENSIONS ARE IN INCHES.

DO NOT SCALE DRAWING.

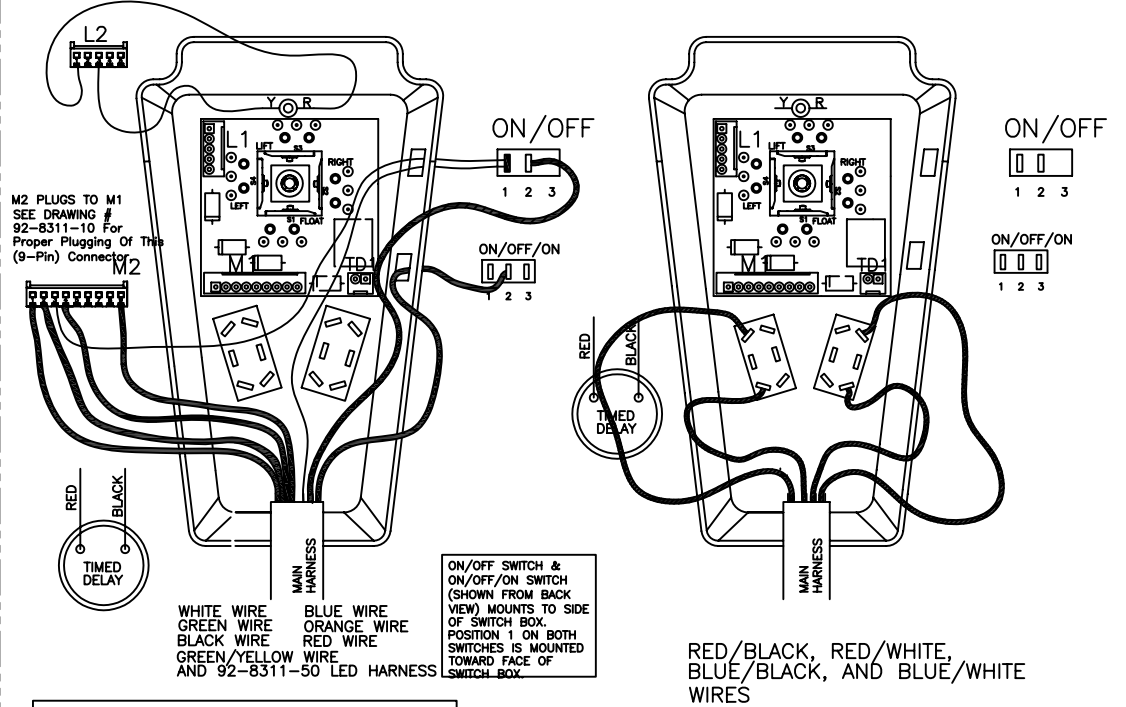
BLIZZARD PN 62109

DRAWN BY	SAG	DATE	1/28/04	CHECKED BY	RELEASED	DATE	2/2/2004
SIZE	B	SCALE	FULL	DRAWING NO.	50-5503-00EX	REV.	A
		SHEET	1 of 1				

REV.	ZONE	DESCRIPTION	E.C.N. #	BY	DATE
A	-	INITIAL RELEASE	19668	FAC	8/26/03



L2 PLUGS TO L1
SEE DRAWING #
92-8311-50 For
Proper Plugging Of This
(5-Pin) Connector.



KEY

[Line 1]	BLACK WIRE
[Line 2]	BLUE WIRE
[Line 3]	GREEN WIRE
[Line 4]	RED WIRE
[Line 5]	BROWN WIRE
[Line 6]	RED BLACK WIRE
[Line 7]	ORANGE WIRE
[Line 8]	WHITE WIRE
[Line 9]	PINK BLACK WIRE
[Line 10]	BLUE BLACK WIRE
[Line 11]	BLUE WHITE WIRE
[Line 12]	RED WHITE WIRE
[Line 13]	GREEN YELLOW WIRE
[Line 14]	PINK BLACK JUMPER

COLOR	FUNCTION
RED/WHITE	RIGHT BOX EXTEND
RED/BLACK	RIGHT BOX RETRACT
RED	SWITCH 12 VOLT +
ORANGE	FLOAT
BLUE/WHITE	LEFT BOX EXTEND
BULE/BLACK	LEFT BOX RETRACT
WHITE	LIFT
BROWN	PUMP SOLENOID
PINK/BLACK	12 (+) DC FUSED
GREEN	RIGHT ANGLE
BLUE	LEFT ANGLE
BLACK	GROUND

NOTE:

- 1.) SEE DRAWING # 92-8311-10 FOR CONNECTOR & TERMINAL TYPE. (MAIN HARNESS)
- 2.) SEE DRAWING # 92-8311-40 FOR CONNECTOR & TERMINAL TYPE. (TIME DELAY HARNESS)
- 3.) SEE DRAWING # 92-8311-50 FOR CONNECTOR & TERMINAL TYPE. (LED HARNESS)

TOLERANCES ARE:

FRACTIONS	DECIMALS	ANGLES
± 1/32	XX ± .01	± 0°30'
	XXX ± .005	

UNLESS OTHERWISE SPECIFIED, DIMENSIONS ARE IN INCHES.

DO NOT SCALE DRAWING.

BLIZZARD #62109

NOTE: PRINT REPRODUCED FOR BLIZZARD TECHNICAL SERVICE USAGE

DRAWING NAME: WIRING INSTRUCTIONS FOR BLIZZARD 810 J/S SEAT BOX

DRAWN BY: FAC DATE: 8/26/03 CHECKED BY: DATE:

SIZE: B SCALE: NTS SHEET: 2 of 3 DRAWING NO.: 50-5503-00 REV.: A

ON/OFF SWITCH &
ON/OFF/ON SWITCH
(SHOWN FROM BACK
VIEW) MOUNTS TO SIDE
OF SWITCH BOX.
POSITION 1 ON BOTH
SWITCHES IS MOUNTED
TOWARD FACE OF
SWITCH BOX.

ON/OFF



ON/OFF/ON



M2 PLUGS TO M1
SEE DRAWING #
92-8311-10 For
Proper Plugging Of This
(9-Pin) Connector.



M2 PLUGS TO M1
SEE DRAWING #
92-8311-10 For
Proper Plugging Of This
(9-Pin) Connector.



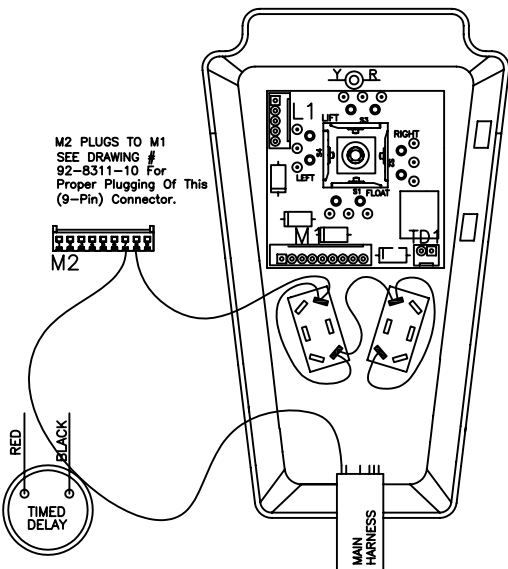
TD2 PLUGS TO TD1
SEE DRAWING #
92-8311-40 For
Proper Plugging Of This
(2-Pin) Connector.



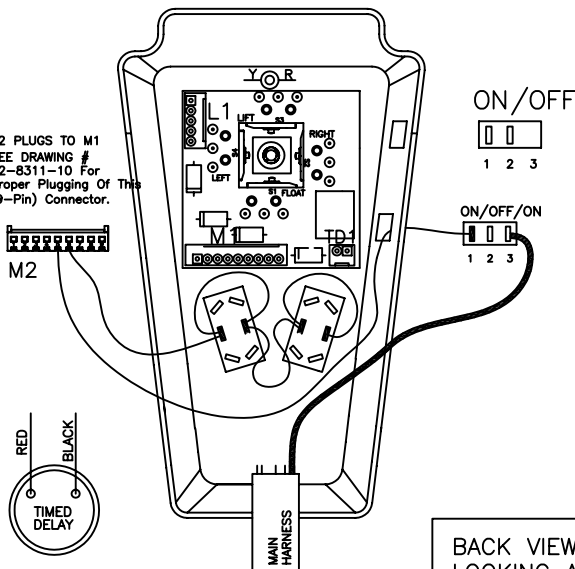
ON/OFF



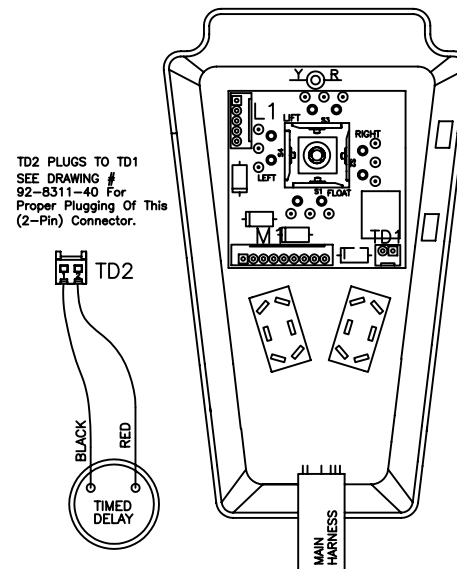
ON/OFF/ON



BROWN WIRE &
BROWN JUMPER 92-8311-13



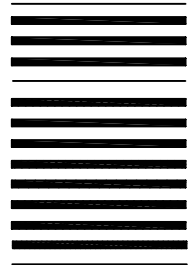
PINK/BLACK WIRE &
PINK/BLACK JUMPERS
92-8311-11 & 92-8311-12



92-8311-40 TIME DELAY
HARNESS

BACK VIEW
LOOKING AT
INSIDE OF SWITCH
BOX

KEY



BLACK WIRE
BLUE WIRE
GREEN WIRE
RED WIRE
BROWN WIRE
RED BLACK WIRE
ORANGE WIRE
WHITE WIRE
PINK BLACK WIRE
BLUE BLACK WIRE
BLUE WHITE WIRE
RED WHITE WIRE
GREEN YELLOW WIRE
PINK BLACK JUMPER

COLOR	FUNCTION
RED/WHITE	RIGHT BOX EXTEND
RED/BLACK	RIGHT BOX RETRACT
RED	SWITCH 12 VOLT +
ORANGE	FLOAT
BLUE/WHITE	LEFT BOX EXTEND
BLUE/BLACK	LEFT BOX RETRACT
WHITE	LIFT
BROWN	PUMP SOLENOID
PINK/BLACK	12 (+) DC FUSED
GREEN	RIGHT ANGLE
BLUE	LEFT ANGLE
BLACK	GROUND

NOTE:

- 1.) SEE DRAWING # 92-8311-10 FOR CONNECTOR & TERMINAL TYPE. (MAIN HARNESS)
- 2.) SEE DRAWING # 92-8311-40 FOR CONNECTOR & TERMINAL TYPE. (TIME DELAY HARNESS)
- 3.) SEE DRAWING # 92-8311-50 FOR CONNECTOR & TERMINAL TYPE. (LED HARNESS)

TOLERANCES ARE:
FRACTIONS DECIMALS ANGLES
 $\pm 1/32$ $XX \pm .01$ $\pm 0^{\circ}30'$
 $XXX \pm .005$
UNLESS OTHERWISE SPECIFIED,
DIMENSIONS ARE IN INCHES.

DO NOT SCALE DRAWING.

BLIZZARD #62109

NOTE: PRINT REPRODUCED FOR BLIZZARD
TECHNICAL SERVICE USAGE

DRAWING NAME WIRING INSTRUCTIONS FOR BLIZZARD
810 J/S SEAT BOX

DRAWN BY	FAC	DATE	8/26/03	CHECKED BY		DATE	
SIZE	B	SCALE	NTS	DRAWING NO.	50-5503-00		
SHEET	3 of 3			REV.	A		