



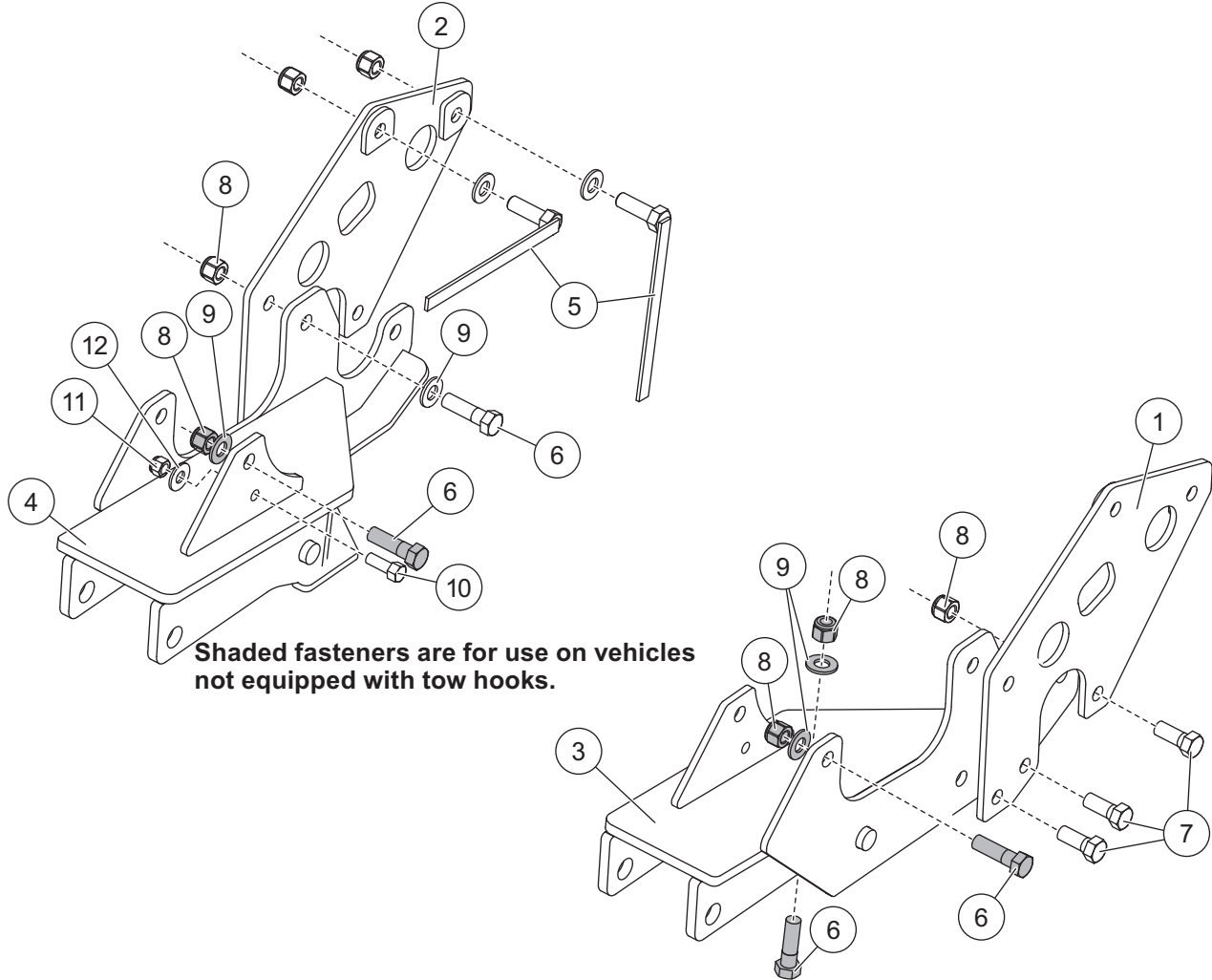
Western Products
 PO Box 245038
 Milwaukee, WI 53224-9538
 www.westernplows.com

DD A DIVISION OF DOUGLAS DYNAMICS, L.L.C.

69981 MOUNT KIT

GM K2500/2500HD/3500/3600
GM C3500/3600 Silv/Sierra

2011 - __



Shaded fasteners are for use on vehicles not equipped with tow hooks.

69981 Mount Kit							
Item	Part	Qty	Description	Item	Part	Qty	Description
1	41473	1	Rear Bracket – DS	4	41513	1	Mount – PS
2	41474	1	Rear Bracket – PS	5	21590	4	1/2-13 x 1-1/2 Hex Cap Screw G5
3	41512	1	Mount – DS	ns	41489	1	Bolt Bag – 69981
41489 Bolt Bag – 69981							
6	90101	8	1/2-13 x 1-3/4 Hex Cap Screw G5	10	90039	2	3/8-16 x 1 Hex Cap Screw G5
7	90575	6	1/2-13 x 1-1/4 Hex Cap Screw G5	11	91333	2	3/8 Locknut GB
8	91335	18	1/2-13 Hex Locknut GB	12	90315	2	3/8 Flat Washer
9	90572	14	1/2 Hardened Flat Washer				
ns = not shown				G = Grade			

PARTS LIST – MODEL 69981

Copyright © 2010 Douglas Dynamics, L.L.C. All rights reserved. This material may not be reproduced or copied, in whole or in part, in any printed, mechanical, electronic, film or other distribution and storage media, without the written consent of Western Products. Authorization to photocopy items for internal or personal use by Western Products outlets or snowplow owner is granted.

Western Products reserves the right under its product improvement policy to change construction or design details and furnish equipment when so altered without reference to illustrations or specifications used. Western Products or the vehicle manufacturer may require or recommend optional equipment for snow removal. Do not exceed vehicle ratings with a snowplow. Western Products offers a limited warranty for all snowplows and accessories. See separately printed page for this important information. The following are registered (®) or unregistered (™) trademarks of Douglas Dynamics, L.L.C.: UltraMount®, WESTERN®.

Printed in U.S.A.
