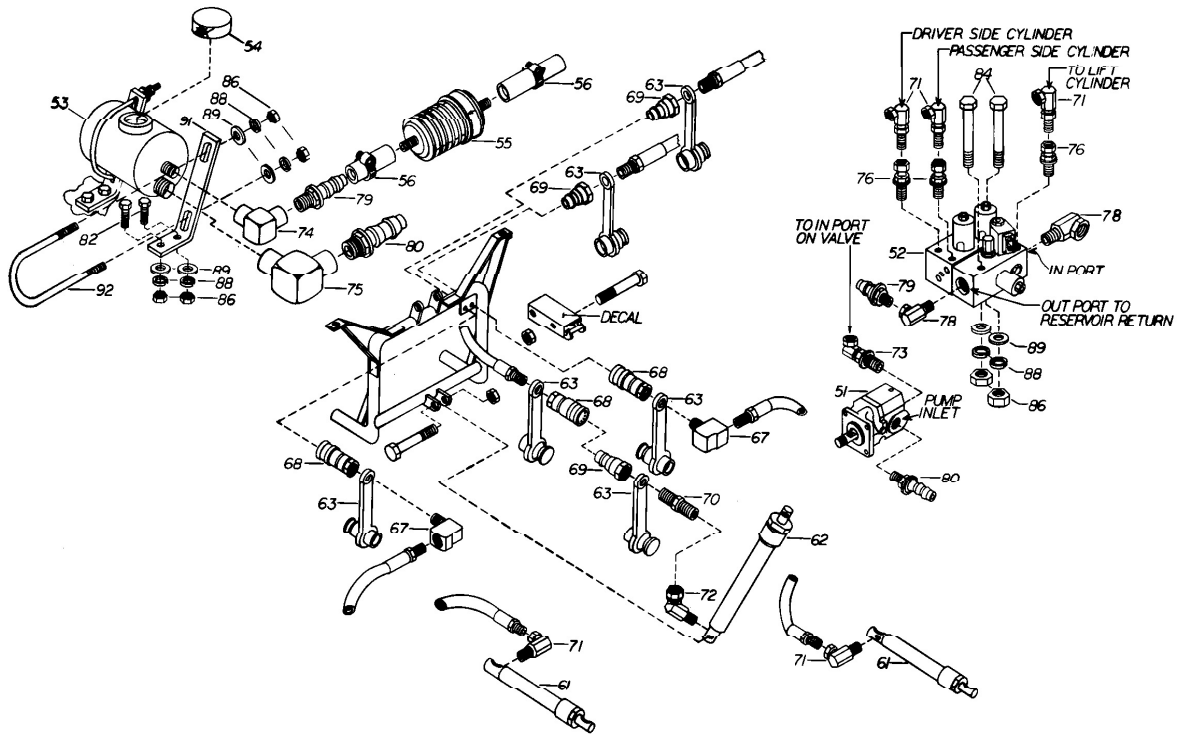




COMMON BELT DRIVE HYDRAULICS with SOLENOID VALVE (SINGLE LEVER SWITCH) TRIPEDGE PLOWS PULLAWAY MOUNTING



CAUTION: DO NOT REMOVE CAP (54), WHILE PUMP (51) IS TURNING

PARTS LIST

ITEM	STOCK	DESCRIPTION	QTY.
51	816000 164	PUMP	1
52	816000 223	SOLENOID VALVE ASSEMBLY	1
53	816000 248	RESERVOIR ASSEMBLY	1
54	816000 176	CAP	1
55	816000 255	FILTER INLINE	1
56	816000 256	CLAMP (FILTER)	2
57	818000 036	WIRING HARNESS	1
61	817000 020	10" STROKE SA. CYLINDER	2
62	817000 116	8" STROKE LIFT CYLINDER	1
	80055	HARDWARE BAG	1
	8SHBU 17/ EB	ELECTRICAL BAG	1
	812000 022	DECAL (LIFT ARM)	1
	816000 009	OWNERS MANUAL	1
	82006	LIGHT SWITCH BRKT. KIT	1

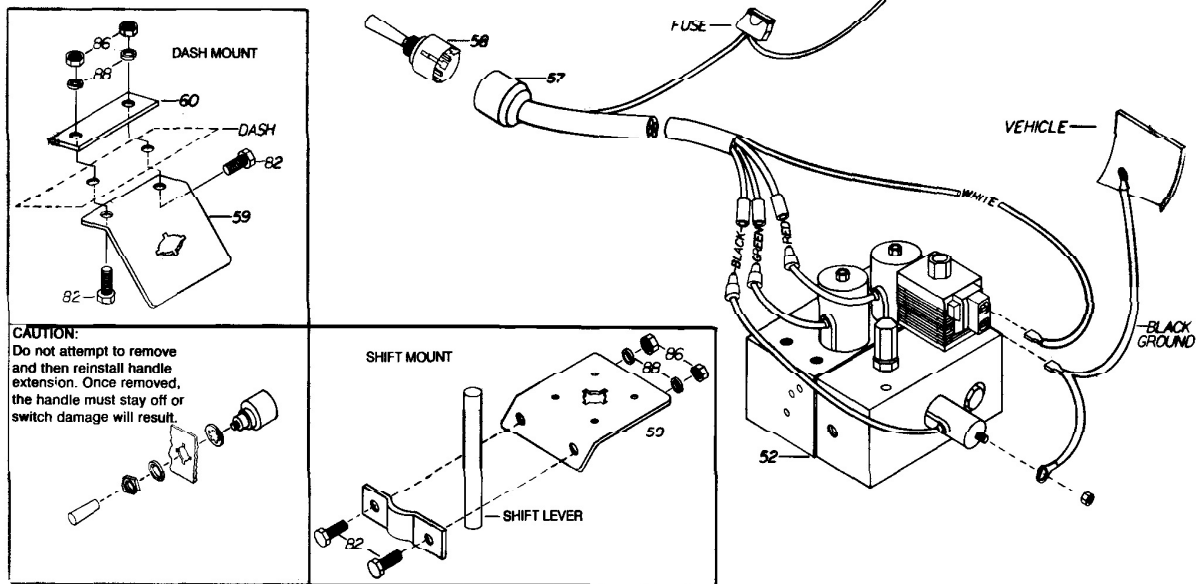
Diamond Equipment reserves the right, under its continuing product improvement program, to change construction or design details, specifications and prices without notice or without incurring any obligation.



Diamond Equipment
Old Route 1 RR #1 • Damariscotta, ME 04543-9720
Phone 563-2227 (Area Code 207)
www.diamondplow.com • email info@diamondplow.com

**COMMON BELT DRIVE HYDRAULICS
(W/SOLENIOD VALVE AND SINGLE LEVER CONTROL SWITCH)
FOR TRIPEDGE PLOWS (PULLAWAY MOUNTINGS)**

**81800
JUNE 2, 1997**



8055 HARDWARE BAG

PARTS LIST

ITEM	STOCK	DESCRIPTION	QTY.	ITEM	STOCK	DESCRIPTION	QTY.
63	817000 026	DUST PLUG & CAP	6	79	8752501 006 006	3/8" NPT QUILL (3/8" HOSE)	2
67	8752515 004 004	1/4" BRASS BAR ST. ELBOW	2	80	8752501 006 010	1/2" NPT QUILL (5/8" HOSE)	2
68	* N/A	** DISCONNECT COUPLER	3	82	8500003 033	1/4" - 20 X 1" CAPSCREW	6
69	* N/A	** DISCONNECT INSERT	3	84	8500003 133	1/4" - 20 X 3-1/2" CAPSCREW	2
70	8752101 004 004	1/4" HEX CLOSED NIPPLE	1	86	20524	1/4" - 20 NUT	12
71	8752202 004 004	1/4" NPT 90 DEG MALE SWV.	5	88	20325	1/4" LOCKWASHER	12
72	8752203 004 004	1/4" NPT M-F 45 DEG. SWV.	1	89	20351	1/4" FLATWASHER	12
73	8752202 006 006	3/8" NPT M-F 90 DEG. SWV.	1	90	21398	1/4" X 3/4" SELF TAP SCR.	2
74	8754102 006 006	3/8" NPT F-F 90 DEG. ELBOW	1	91	816000 253	RESERVOIR BRACKET	2
75	8754102 008 008	1/2" NPT F-F 90 DEG. ELBOW	1	92	816000 254	RESERVOIR "U" BOLT	2
76	21528	1/4" NPT STR MALE SWIVEL	3	93	20146	5/8" - 11 X 3-1/4" CAPSCREW	1
78	8752207 006 006	9/16" 0 90 DEG. 3/8" F SWV.	2	94	20151	5/8" - 11 X 4-3/4" CAPSCREW	1
				95	20309	5/8" - 11 LOCKNUT	2

* DISCONNECTS AVAILABLE IN SETS ON;Y # 15741

8SHBU 17 / EB

PARTS LIST

ITEM	STOCK	DESCRIPTION	QTY.
58	22092	SINGLE LEVER SWITCH	1
59	15673	SWITCH BRACKET (SLC)	1
60	15676	BACKUP PLATE (SLC BRKT)	1
	22090	DECAL (SLC BRKT)	1
64	15675	CLAMP PLATE (SLC BRKT)	1
65	21832	BUSHING, SPLIT	1



Diamond Equipment
Old Route 1 RR #1 • Damariscotta, ME 04543-9720
Phone 563-2227 (Area Code 207)
www.diamondplow.com • email info@diamondplow.com

COMMON HYDRAULIC SUPPLEMENTAL INSTRUCTIONS

1. Disregard the engine kit instructions concerning mounting the external oil reservoir and attaching and routing the related hoses.
2. After the valve assembly (52) has been installed, select a clear area on either the driver's or passenger's side fender well to mount the oil reservoir (53) onto. Vehicle wiring, hoses, accessories, etc. may have to be moved or rearranged slightly to accommodate the oil reservoir assembly.

CAUTION: The oil reservoir assembly (53) should always be mounted level with or higher than the pump (51). Failure to do so can result in oil starvation and severe damage to pump (51).

3. The oil reservoir (53) can be mounted directly to flat horizontal or vertical surfaces by drilling four 9/32" DIA. holes in surface and attaching using two 1/4" "U" bolts (92) with 1/4" flatwashers (89), 1/4" lockwashers (88) and 1/4"-20 nuts (86) on back side. It can also be mounted to the two reservoir brackets (91) using the 1/4" "U" bolts (92), 1/4" flatwashers (89) 1/4" lockwashers (88), and 1/4"-20 nuts (86). Then the oil reservoir and bracket assembly can be mounted by drilling four 9/32" DIA. holes in surface and fastened using four 1/4"-20 X 1" capscrews (82), with 1/4" flatwashers (89), 1/4" lockwashers (88), and 1/4"-20 nuts (86) on back side. (If necessary, the reservoir brackets (91) can be rebent to accommodate uneven or irregular surfaces).
4. Install a 3/8" NPT. X 90 DEG. female to female elbow (74) onto the return nipple of oil reservoir (53). Install a 3/8" Pushloc quill (79) into the elbow (74). Install the 3/8" low pressure hose (from the particular hydraulic kit) onto the Pushloc quill (79) and route hose to the valve assembly (52). Install 1/2" NPT. X 90 DEG. female to female elbow (75) onto the suction nipple on oil reservoir (53). Install a 1/2" NPT. Pushloc quill (80) into the elbow (75). Install the 5/8" low pressure hose (from the particular hydraulic kit) onto the Pushloc quill (80) and route hose to the pump assembly (51). Install a 3/8" Pushloc quill (79) into the swivel elbow in the "out" port of valve. Push the free end of 3/8" low pressure onto the 3/8" pushloc quill (79). Install a 1/2" NPT. Pushloc quill (80) into the suction port on side of pump (51). Push the free end of 5/8" low pressure hose onto the Pushloc quill (80).

CAUTION: Route all hoses away from heat sources and moving parts. Tie or tape all hoses in place. Failure to do so could cause an engine fire.

**COMMON BELT DRIVE HYDRAULICS
(W/SOLENIOD VALVE AND SINGLE LEVER CONTROL SWITCH)
FOR TRIPEDGE PLOWS (PULLAWAY MOUNTINGS)**

**81800
JUNE 2, 1997**

5. Install swivel elbows (71) into the ports of angle cylinders (61). Install a 1/4" NPT. X 45 DEG. swivel elbow (72) into the port of the lift cylinder (62). Install a 1/4" NPT. close nipple (70) into the swivel elbow (72). Install a dust plug & cap (63) and male disconnect half (69) onto the close nipple (70). Attach one end of the longest 1/4" high pressure hose to the swivel elbow in the lift cylinder port of valve (52). Route the other end out through radiator web and grill to the lift cylinder. Install a dust plug and cap (63) and a female disconnect half (68) onto free end of hose and connect to the male disconnect half (69) in the lift cylinder. Attach the ends of the two mid-length 1/4" hoses to the swivel elbows in the angle cylinder ports of valve. Route the other ends out through radiator web and grill to the hose plate on vertical frame. Install a dust plug & cap (63) and a male disconnect half (69) onto the end of each hose. Place the male disconnect half on the hose from the valve angle cylinder port closest to the cable clevises through the driver's side hole in the hose plate on vertical frame. Place the male disconnect half on the hose from the other valve angle cylinder port through the passenger's side hole in the hose plate on vertical frame. Install a 1/4" brass bar street elbow (67), a dust plug & cap (63), and a female disconnect half (68) onto one end of the 1/4" high pressure hose 34" long. Attach the other end to the swivel elbow in the driver's angle cylinder. Install a 1/4" brass bar street elbow (67), a dust plug & cap (63) and a female disconnect half (68) onto one end of the 1/4" high pressure hose 40" long. Attach the other end to the swivel elbow in the passenger's side angle cylinder. Attach the female disconnect halves on the ends of the angle cylinder hoses to the corresponding male disconnect halves in the hose plate on vertical frame.
6. **INLINE OIL FILTER:** Locate the 3/8" low pressure hose running between the valve (52) and the reservoir (53)_ In a convenient location, cut the 3/8" low pressure hose with a knife. Place a hose clamp (56) loosely over each end of the cut 3/8" low pressure hose. Install the inline filter (55) between the two cut ends of the low pressure hose, **being certain the FLOW ARROW on the Filter is pointing toward the hose end leading to the reservoir.** Push the 3/8" hose ends on all the way to the 3/8" quill fittings on the filter. Secure the hose ends with the hose clamps (56).

NOTE: It is recommended 816000 255 Inline Filter be replace once a year.

NOTE: When plow / pushframe assembly is removed from vehicle, insert dust plug & caps (63) into the female disconnect halves (68) on the ends of the angle cylinder hoses. Place dust plugs & caps (63) onto the male disconnect halves (69) in the hose plate on the vertical frame.

NOTICE: Diamond Equipment or Meyer Products assume no responsibility for installations not made in accordance with these instructions.

Instructions are subject to change without notice.