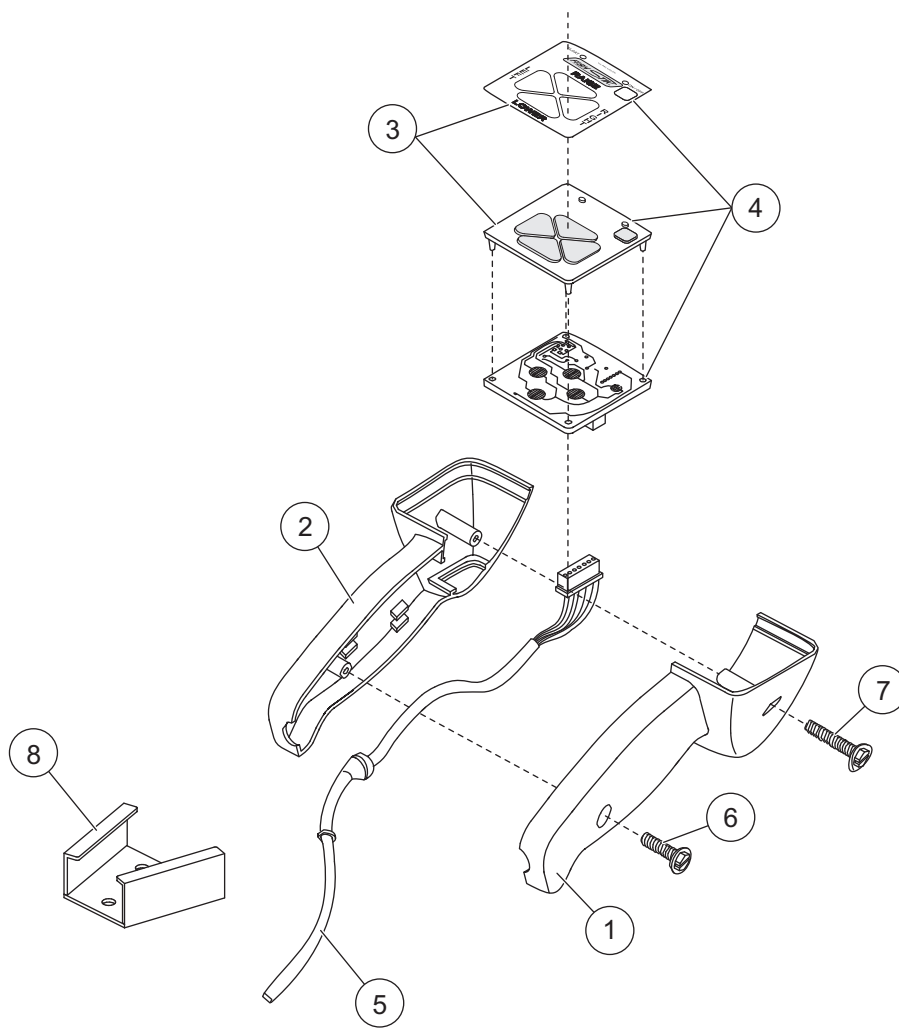




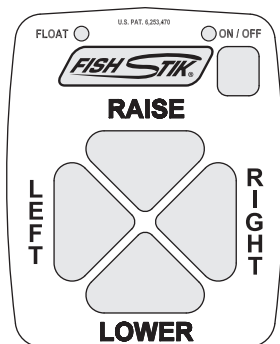
## CONTROL KIT

### Fish-Stik® Hand-Held

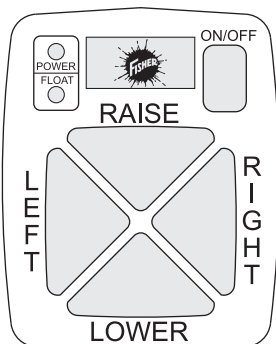
#### Parts List



9400 Fish-Stik® Hand-Held Control							
Item	Part	Qty	Description	Item	Part	Qty	Description
1	96456	1	Control Body – Right	5	96437	1	Harness, Straight Blade
2	96457	1	Control Body – Left				6-Pin White Connector
3	96440	1	Keypad w/Label (Split Light)*	6	93173	1	8-18 x 3/4 Tapping Screw
	56451	1	Keypad w/Label (2 Lights Left)**	7	93174	1	8-18 x 1-1/4 Tapping Screw
4	56473	1	PCB Assembly w/Keypad & Label	ns	64312	1	Parts Bag, Control Bracket
64312 Parts Bag, Control Bracket							
8	56436	1	Control Bracket	ns	91230	3	6 Spring Lock Washer
ns	80135	3	6-32 x 1 Tapping Screw				
Parts Not Included in Kit – Sold Separately							
ns	80168	1	SFE-6 Fuse (5-pack)	ns	56468	1	SFE-6 Long Spring, Black Holder
ns	56469	1	SFE-6 Short Spring, White/Black Holder	ns	56423	1	Label, SFE-6 Fuse
ns = not shown							



\* Keypad and Label with Split Lights



\*\* Keypad and Label with 2 Lights Left

Copyright © 2009 Douglas Dynamics, L.L.C. All rights reserved. This material may not be reproduced or copied, in whole or in part, in any printed, mechanical, electronic, film or other distribution and storage media, without the written consent of Fisher Engineering. Authorization to photocopy items for internal or personal use by Fisher Engineering outlets or snowplow owner is granted.

Fisher Engineering reserves the right under its product improvement policy to change construction or design details and furnish equipment when so altered without reference to illustrations or specifications used. Fisher Engineering or the vehicle manufacturer may require or recommend optional equipment for snow removal. Do not exceed vehicle ratings with a snowplow. Fisher Engineering offers a limited warranty for all snowplows and accessories. See separately printed page for this important information. The following are registered (®) trademarks of Douglas Dynamics, L.L.C.: Fish-Stik®, FISHER®.

Printed in U.S.A.