



A DIVISION OF DOUGLAS DYNAMICS, L.L.C.

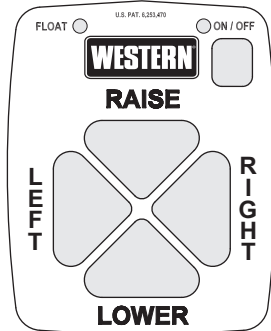
Western Products
PO Box 245038
Milwaukee, WI 53224-9538
www.westernplows.com

56462 & 56369

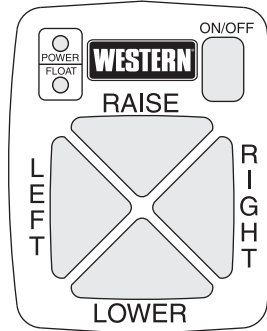
**CabCommand HAND-HELD &
JOYSTICK CONTROLS**

Parts List

PARTS LIST

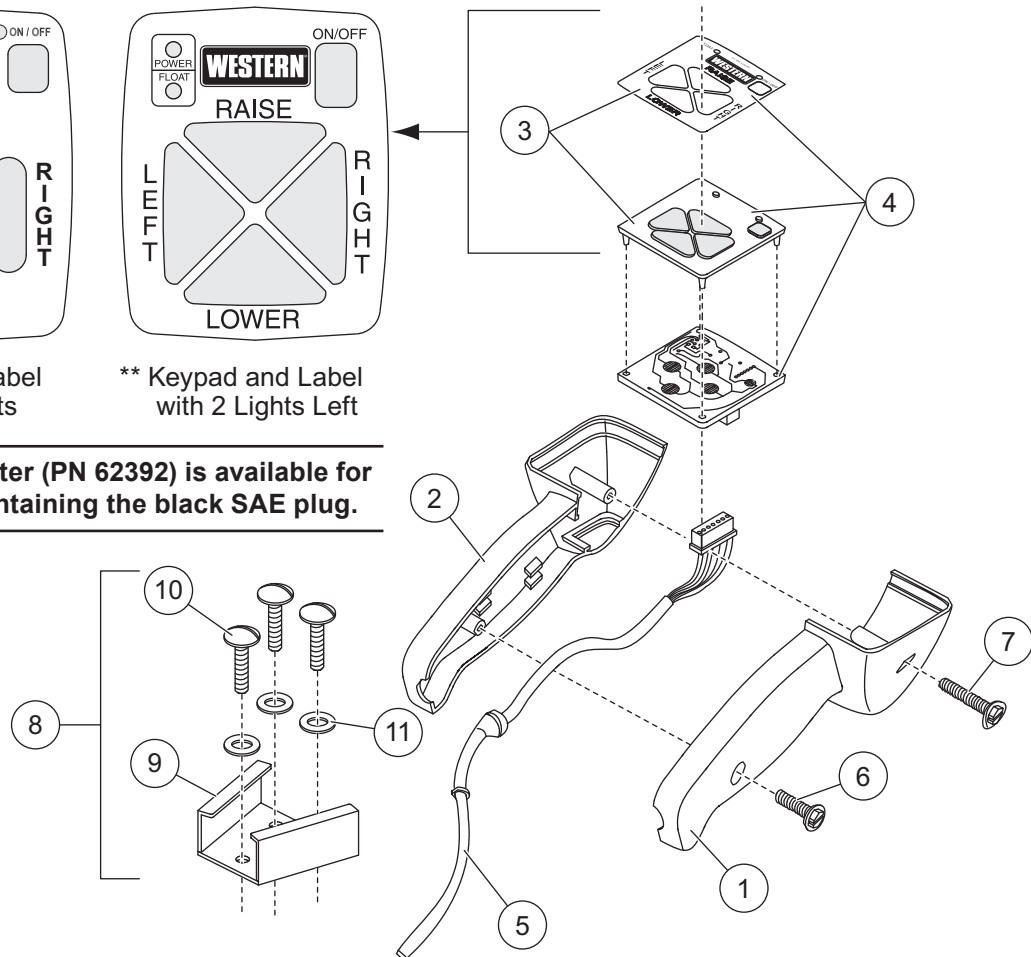


* Keypad and Label
with Split Lights



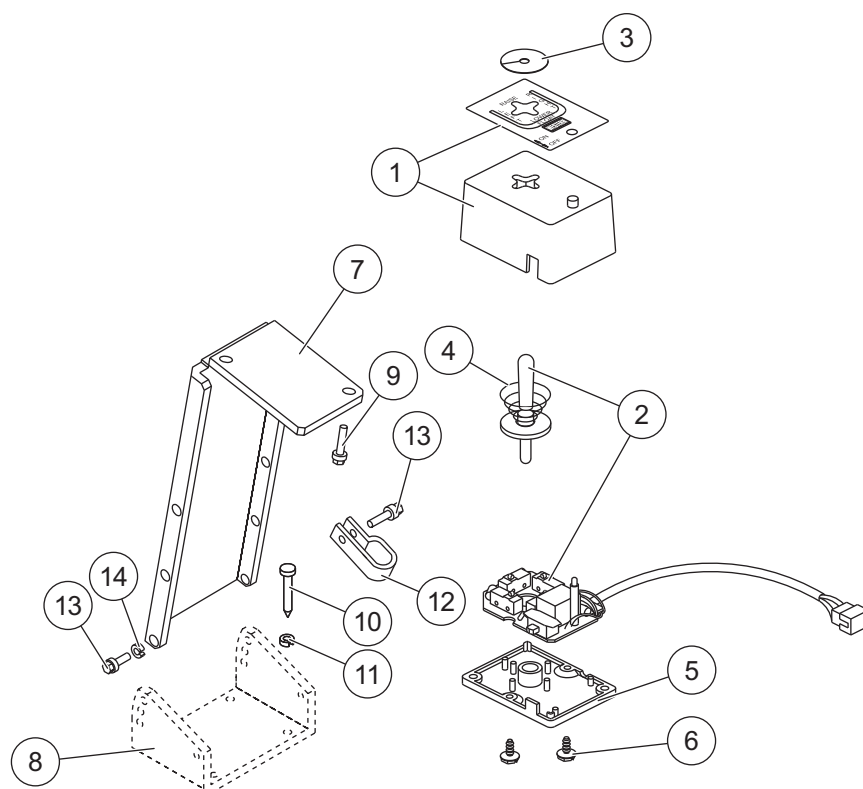
** Keypad and Label
with 2 Lights Left

**NOTE: An adapter (PN 62392) is available for
the harness containing the black SAE plug.**



56462 CabCommand Hand-Held Control

Item	Part	Qty	Description	Item	Part	Qty	Description
1	96456	1	Control Body – Right	5	96437	1	Harness, Straight Blade 6-Pin White Connector
2	96457	1	Control Body – Left	6	93173	1	8-18 x 3/4 Tapping Screw
3	96442	1	Keypad w/Label (Split Lights)*	7	93174	1	8-18 x 1-1/4 Tapping Screw
	56450	1	Keypad w/Label (2 Lights Left)**	8	64312	1	Parts Bag, Control Bracket
4	56472	1	PCB Assembly w/Keypad & Label				
64312 Parts Bag, Control Bracket							
9	56436	1	Control Bracket	11	91230	3	6 Spring Lock Washer
10	80135	3	6-32 x 1 Tapping Screw				
Parts Not Included in Kit – Sold Separately							
ns	80168	1	SFE-6 Fuse (5-Pack)	ns	56468	1	SFE-6 Long Spring, Black Holder
ns	56469	1	SFE-6 Short Spring, White/Black Holder	ns	56423	1	Label – SFE-6 Fuse
ns = not shown							



NOTE: An adapter (PN 62392) is available for the harness containing the black SAE plug.

56369 Solenoid Control (Style 2)							
Item	Part	Qty	Description	Item	Part	Qty	Description
1	49286	1	Body w/Label & Lens	5	56199	1	Base
2	49283	1	PC Board & Lever Assembly Molex (Style 2) White	6	93153	2	6-19 x 3/8 Tapping Screw
3	56283	1	Shield	7	56308	1	Control Bracket
4	55923	1	Spring – Conical	8	56080	1	Dash Bracket
				ns	56631	1	Parts Bag
56631 Parts Bag							
9	93154	2	8-18 x 5/8 Tapping Screw	12	55381	1	Cable Clamp
10	90388	4	10-16 x 1 Tapping Screw	13	93157	5	8-32 x 3/8 Tapping Screw
11	91242	4	10 Spring Lock Washer	14	91231	4	8 Spring Lock Washer
ns = not shown							

Copyright © 2009 Douglas Dynamics, L.L.C. All rights reserved. This material may not be reproduced or copied, in whole or in part, in any printed, mechanical, electronic, film or other distribution and storage media, without the written consent of Western Products. Authorization to photocopy items for internal or personal use by Western Products outlets or snowplow owner is granted.

Western Products reserves the right under its product improvement policy to change construction or design details and furnish equipment when so altered without reference to illustrations or specifications used. Western Products or the vehicle manufacturer may require or recommend optional equipment for snow removal. Do not exceed vehicle ratings with a snowplow. Western Products offers a limited warranty for all snowplows and accessories. See separately printed page for this important information. The following are registered (®) trademarks of Douglas Dynamics, L.L.C.: UltraMount®, WESTERN®.

Printed in U.S.A.