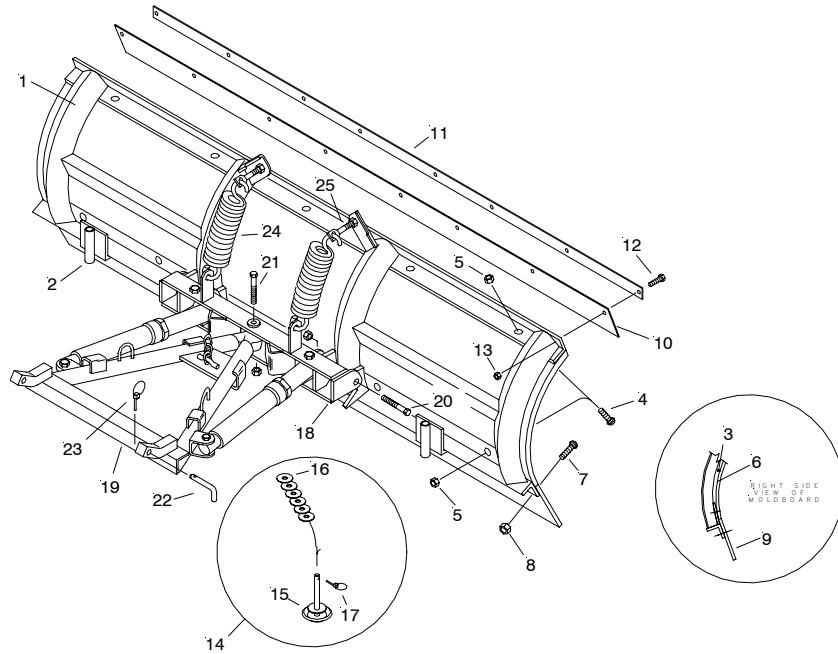


Parts & Installation Instructions

Polyethelene Snow Plows

Models TMP-6.5 and TMP 7.0



Parts List

Item	TMP-6.5	Qty	TMP-7.0	Qty	Description
	09241	1	09242	1	Moldboard Assembly
1	12480	1	12080	1	• Moldboard Frame
2	12120	2	12120	2	•• Runner Bracket Assembly
3	12370	4	12370	4	• Rubber Insert TMP
4	22192	9	22192	8	• Bolt H 1/4-20 x 1 Gr. 2
5	20312	9	20312	8	• Nut Eslok 1/4-20
6	12479	1	12085	1	• Plastic Sheet
	08184	1	08184	1	• Hardware Bag, Cutting Edge
7	21943	10	21943	10	• Bolt C 1/2-13 x 1-3/4" Gr. 5
8	20307	10	20307	10	• Locknut Esna 1/2-13
9	09100	1	09105	1	• Cutting Edge
	12466	1	12089	1	Snow Deflector Kit
10	12470	1	12088	1	• Snow Deflector
11	12486	1	12087	1	• Bar Reinforcement
	08483	1	08657	1	• Hardware Bag
12	22192	9	22192	8	•• Bolt H 1/4-20 x 1" Gr. 2
13	20312	9	20312	8	•• Nut Eslock 1/4-20
	09127	2	09127	2	Runner & Spindle Assembly
14	09127	2	09127	2	•• Mushroom Weldment
15	10853	1	10853	1	•• 3/4" Flatwasher
16	20359	9	20359	9	•• 3/4" Flatwasher
17	22083	1	22083	1	•• Linch Pin
	-----	-----	-----	-----	Pivot Bar & A-Frame Carton
18	12984	1	12984	1	• Pivot Bar
19	-----	1	-----	1	• A-Frame
20a	13598	2	13598	2	• Pivot Bolt Pre May 03
20b	13753	2	13753	2	• Pivot Bolt
21	13591	1	13591	1	• King Bolt
22	11006	2	11006	2	• Hinge Pin
23	22083	2	22083	2	• Linch Pin
24	12978	2	12978	2	• Trip Spring
25	09124	2	09124	2	• Eye Bolts with Locknuts

Parts indented are included in the assembly under which they are indented.

Meyer Products Inc. reserves the right, under its continuing product improvement program, to change construction or design details, specifications and prices without notice or without incurring any obligation.

INSTALLATION INSTRUCTIONS

Note: The following instructions cover assembly of Moldboard, Pivot Bar and A-Frame. Refer to separate instructions for installation of plow mounting and hydraulic system.

- a. Liberally coat Pivot Bolts (21) with chassis lubricant.
- b. Attach Pivot Bar (19) to Moldboard Assembly with Pivot Bolts (21).
- c. Attach Trip Springs (25) to Pivot Bar (19). Attach Eye Bolts (26) to Trip Springs (25) and Moldboard Assembly, making certain locknuts are positioned as shown in Figure 2.
- d. Make certain each Eye Bolt (26) is in a vertical position as shown in Figure 2 so that the Eye Bolt and Trip Spring (25) hinge properly when Moldboard Assembly trips.

Note: Proper tension is attained when Trip Spring (25) coils just begin to separate and then tightening top locknut four additional turns.

- e. Attach A-Frame to Pivot Bar (21) as shown on front page. **IMPORTANT:** Install King Bolt (22) from bottom so that locknut is on top.

NOTICE:

Meyer Products assumes no responsibility for installations not made in accordance with these instructions.

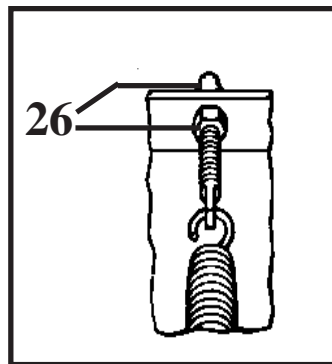


Figure 2