



**PARTS & INSTALLATION INSTRUCTIONS**  
**MDII™ and EZ MOUNT PLUS™**  
**SNOW PLOW MOUNTING 17127**  
**1991 - 2002 GMC and CHEVROLET**  
**HD 3500 4x2 MODELS**

End user must be given this instruction sheet prior to delivery of this Snow Plow.

**SAFETY DEFINITIONS**

	This is the safety alert symbol. It is used to alert you to potential personal injury hazards. Obey all safety messages that follow this symbol to avoid possible injury or death.
	DANGER Indicates an imminently hazardous situation which, if not avoided, will result in death or serious injury.
	WARNING Indicates a potentially hazardous situation which, if not avoided, could result in death or serious injury.
	CAUTION Indicates an potentially hazardous situation which, if not avoided, may result in minor or moderate injury.
	CAUTION used without the safety alert symbol indicates a potentially hazardous situation which, if not avoided, will result in property damage.

**IMPORTANT NOTICE**

In conjunction with FMVSS (Federal Motor Vehicle Safety Standards) and OEM (Original Equipment Manufacturer) guidelines, Meyer Products has designed this plow package with the following guidelines:

	Installation of a snowplow may effect your new vehicle warranty. For more information consult your Vehicle Owner's Manual / Vehicle Dealer.
	The vehicle must not be operated when overloaded. In all cases, the loaded vehicle weight, including the entire snowplow system, all aftermarket accessories, driver, passenger, options, nominal fluid levels, and cargo must not exceed the front/rear Gross Axle Weight Rating (GAWR), and total Gross Vehicle Weight Rating (GVWR). These weights ratings are specified on the safety compliance certification label on the driver's side door opening. The use of rear ballast weight may be required to prevent exceeding the front GAWR.

According to the NHTSA (National Highway Traffic Safety Administration) new and untitled vehicles need to be verified by the installer that snowplow and ballast (if needed) do not exceed the front/rear GAWR and total GVWR.

	Read the Meyer Owner's Manual before operating or servicing a snowplow. <b>FOLLOW THESE INSTRUCTIONS EXPLICITLY.</b>
--	--

**GENERAL INFORMATION**

	<b>SAFETY PRECAUTIONS</b> should be used when <b>Hydraulic Unit is in OPERATION</b> and plow is in a <b>RAISED</b> position. <b>Lower plow to ground when vehicle is PARKED in case of hydraulic failure.</b>
--	---

Check contents against the parts list to determine all are correct and included, and also to familiarize yourself with them.

	Warranty does not apply to a Meyer or Diamond product which has been negligently or improperly assembled or installed.
--	--

	<b>CAUTION: To avoid harm to vehicles electrical system always</b> disconnect battery before beginning installation. <b>DO NOT BURN</b> holes or <b>WELD</b> vehicle frame. This may cause frame failure.
--	---

**OVERHAUL and SERVICE INFORMATION** are covered on separate instructions.

Meyer Products and Diamond Equipment reserves the right, under its continuing product improvement program, to change construction or design details, specifications and prices without notice or without incurring any obligation.

Meyer Products Inc.  
18513 Euclid Ave. • Cleveland, Ohio 44112-1084  
Phone 486-1313 (Area Code 216)  
www.meyerproducts.com • email info@meyerproducts.com

Diamond Equipment  
6 Angell Lane • Damariscotta, ME 04543-4507  
Phone 563-2227 (Area Code 207)  
www.diamondplow.com • email info@diamondplow.com



## PARTS LIST

ITEM	PART NO.	QTY.	DESCRIPTION
	17127	1	MOUNTING CARTON
1	11970	1	• P.S. Push Arm
2	11969	1	• D.S. Push Arm
3	11896	1	• Rear Brace Weldment
4	11900	1	• R.H. Side Member
5	11901	1	• L.H. Side Member
	08769	1	• HARDWARE BAG
6	14595	2	•• 3/4" Special Bolt
7	80128	6	•• 5/8"-11 Nut W/ Handle
8	11756	1	•• R.H. Handle Nut
9	11757	1	•• L.H. Handle Nut
10	20095	6	•• 1/2"-13 x 1-1/2" Hex Bolt
11	20096	8	•• 1/2"-13 x 1-3/4" Hex Bolt
12	20139	8	•• 5/8"-11 x 1-1/2" Hex Bolt
13	20140	4	•• 5/8"-11 x 1-3/4" Hex Bolt
14	20141	2	•• 5/8"-11 x 2" Hex Bolt
15	20307	8	•• 1/2"-13 Locknut
16	20309	6	•• 5/8"-11 Locknut
17	20310	2	•• 3/4"-10 Locknut
18	8501001009	6	•• 1/2"-13 Nut
19	20329	6	•• 1/2" Lockwasher
20	20331	6	•• 5/8" Lockwasher
21	20357	4	•• 5/8" Flatwasher
*	19370	1	<b>Universal Clevis</b> (Part of Plus CLF Carton)
**	11770	1	<b>Universal Clevis</b> (Part of MDII CLF Carton)
<b>15" Sector</b>			<b>MEYER</b>
	<b>PART NO.</b>	<b>PART NO.</b>	<b>DESCRIPTION</b>
		16516	<b>Sector A-Frame Carton</b>
<b>DIAMOND</b>			
	81504	1	<b>Common Attaching Kit</b>
	81026	1	<b>Push Frame</b>

Parts indented are included in the carton, bag or assembly under which they are indented.

### IMPORTANT

After first use, retighten all mounting bolt connections to specified torque. All mounting bolt connections to be checked periodically for tightness.

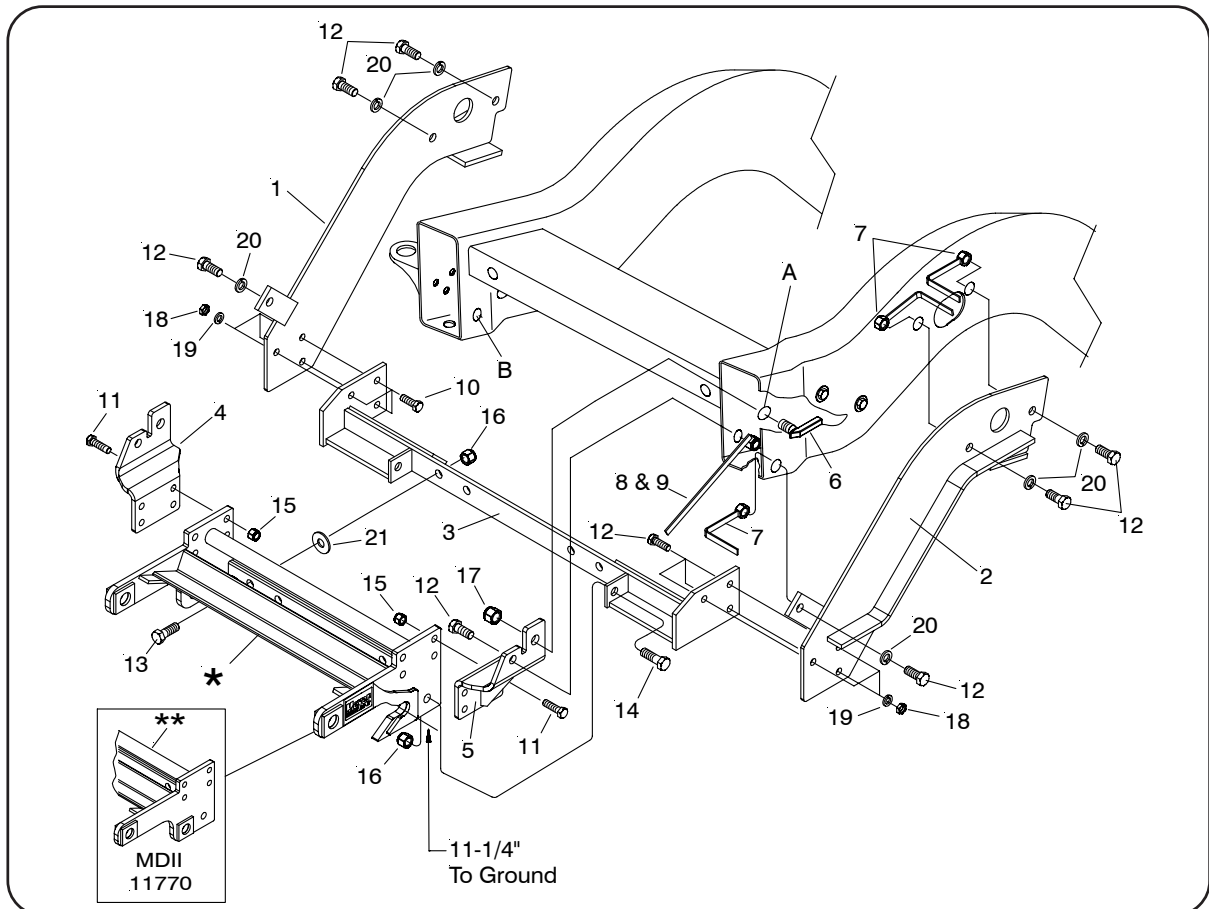
Locknuts are furnished **DO NOT** tighten bolts and nuts until installation is complete (unless otherwise specified), then be sure to tighten all attaching parts per specified torque chart.

### TORQUE CHART FOOT

Bolt Nut Size	Gr. 2	Gr. 5	Gr. 8
1/4 - 20	4 - 5		
5/16 - 18	9 - 11		
3/8 - 16	17 - 20	26 - 29	
7/16 - 14		42 - 46	60 - 66
1/2 - 13		64 - 72	90 - 100
5/8 - 11		127 - 141	179 - 198

### NOTE:

THIS MOUNTING CARTON CAN BE USED WITH THE MDII OR EZ MOUNT PLUS CLF CARTONS.



**⚠ WARNING**

- A ballast weight may be required to prevent front GAWR overloading. If required, ballast must be securely attached at least 24 inches rear of the rear axle.

**⚠ WARNING**

- Front end wheel alignment and headlight aim may require readjustment after installation of equipment, and is the responsibility of the equipment installer. Failure to adjust front wheel alignment may cause premature uneven tire wear. If required, reset to chassis manufacturer's specifications found in the GM Shop Manual.

Rear ballast is determined by weighing a vehicle's front and rear axles and adding weight behind the rear axle until front axle weight is under or equal to the vehicle specific front GAWR while not exceeding the rear GAWR and GVWR.

Vehicle option packages may vary. If in doubt, it is always a good idea to weigh the vehicle to ensure all weight ratings are not exceeded with plow in the raised position.

## INSTALLATION INSTRUCTIONS

- Remove 3 bolts from both the L.H. (driver) and R.H. (passenger) front bumper supports at the radiator mounting brackets. Retain all hardware. These bolts will be reinstalled later.
  - Attach sidemembers (4&5) to vehicle frame at slot "A" using Special Bolt (6), and 3/4" Locknut (17). Note: This slot will need to be enlarged to accommodate Special Bolt (6). **Do not tighten at this time.**
  - Drill a 11/16" hole "B" On the inside of both frame rails using the hole in sidemembers (4&5) as a template. Note: Be certain that the sidemembers are perpendicular to the ground before drilling. Attach sidemembers at hole by using 5/8-11 x 1-1/2 bolts (12) and handle nuts (8&9). **Do not tighten at this time.**
  - Position Clevis Frame (\*) to the inside of sidemembers (4&5). Attach clevis frame using 1/2-13 x 1-3/4 bolts (11) and 1/2-13 locknuts (15). **Do not tighten at this time.**
  - Position the Rear Brace Weldment (3) to the rear of the Clevis (\*). Attach the rear brace weldment to the clevis using 5/8-11 x 1-3/4 bolts (13), 5/8 flatwashers (21) & 5/8-11 locknuts (16). Install 5/8-11 x 2 bolts (14) through the hole in the tabs of the rear brace weldment (3) and through the corresponding hole in the clevis (\*). Secure with 5/8-11 locknuts (16). Note: Flatwashers (21) are to be placed between the rear brace weldment (3) & clevis (\*) to serve as spacers. **Do not tighten at this time.**
- Place the driver's side push arm (2) up onto the outside surface of the driver's side frame rail with the rear most hole in the push arm lined up with the hole in the frame rail that is approximately over the center line of the front axle. Note: Route ABS cable over Drivers Side Push Arm (2). Install a 5/8"-11 X 1 1/2" bolt (12) and 5/8" lockwasher (20) through the rear most hole in the push arm and through the hole in the frame rail. Rotate the front end of the push arm (2) up until the slot in the front tab lines up with the lower slot in the outside surface of the frame rail just behind the front spring shackle. Install a 5/8"-11 X 1 -1/2" bolt (12) and 5/8" lockwasher (20) through the slot in the front tab of the push arm (2) and through the slotted hole in the frame rail. Place a 5/8"-11 nut with handle (7) through the cut out in the lower frame rail around the front spring shackle. Line up the 5/8"-11 nut with handle (7) with the 5/8"-11 X 1- 1/2" bolt (12) through the front tab of the push arm and frame and screw them together loosely. Place a 5/8"-11 nut with handle (7) through the large hole in the rear section of the push arm (2) and through the slotted hole in the frame rail. Note:It may be necessary to enlarge the large slotted hole in the frame rail in order for the handle nuts to fit properly. Line up the 5/8"-11 nut with handle (7) with the 5/8" -11 X 1 -1/2" bolt (12) through the rear most hole in the push arm (2), and frame and screw them together loosely. Line up the three holes in the lower front section of the push arm (2) with the three corresponding holes in the Rear Brace Weldment (3). Attach using three 1/2"-13 X 1- 1/2" bolt (10), 1/2" lockwasher (19) and 1/2"-13 nuts (18).
  - Install the passenger's side push arm (1) in the same manner and with the same number and type of fasteners as described for attaching the driver's side push arm.
- Note: Before Tightening the fasteners, the clevis frame (\*) should be pushed back as far as possible under vehicle.**
- Tighten all fasteners to their proper torque. Tighten bolts in the same order they were assembled to the vehicle.
  - Using the remaining open hole in the rear section of each push arm (1),(2) as a guide, drill a 5/8" dia. hole through each frame rail. Place a 5/8"-11 nut with handle (7) through the large hole in the rear section of each push arm (1),(2) and the slotted hole in each frame rail. Install a 5/8"-11 X 7- 1/2" bolt (12) and 5/8" lockwasher (20) into each push arm (1),(2) and the drilled hole in each frame rail. Screw the 5/8"-11 X 1 -1/2" bolt (12) into the 5/8"-11 nuts with handle and tighten.
  - Reinstall bolts for front bumper supports at the radiator mounting bracket.

**Meyer Products or Diamond Equipment assumes no responsibility for installations not made in accordance with these instructions.**