



## PARTS & INSTALLATION INSTRUCTIONS

### MDII™ and EZ MOUNT PLUS™

### SNOW PLOW MOUNTING

### 2004 NISSAN TITAN / ARMADA 4x4 MODELS

End user must be given this instruction sheet prior to delivery of this Snow Plow.

#### SAFETY DEFINITIONS

	This is the safety alert symbol. It is used to alert you to potential personal injury hazards. Obey all safety messages that follow this symbol to avoid possible injury or death.
	<b>DANGER</b> Indicates an imminently hazardous situation which, if not avoided, will result in death or serious injury.
	<b>WARNING</b> Indicates a potentially hazardous situation which, if not avoided, could result in death or serious injury.
	<b>CAUTION</b> Indicates an potentially hazardous situation which, if not avoided, may result in minor or moderate injury.
	<b>CAUTION</b> used without the safety alert symbol indicates a potentially hazardous situation which, if not avoided, will result in property damage.

#### IMPORTANT NOTICE

In conjunction with FMVSS (Federal Motor Vehicle Safety Standards) and OEM (Original Equipment Manufacturer) guidelines, Meyer Products has designed this plow package with the following guidelines:

	Installation of a snowplow may effect your new vehicle warranty. For more information consult your Vehicle Owner's Manual / Vehicle Dealer.
	The vehicle must not be operated when overloaded. In all cases, the loaded vehicle weight, including the entire snowplow system, all aftermarket accessories, driver, passenger, options, nominal fluid levels, and cargo must not exceed the front/rear Gross Axle Weight Rating (GAWR), and total Gross Vehicle Weight Rating (GVWR). These weights ratings are specified on the safety compliance certification label on the driver's side door opening. The use of rear ballast weight may be required to prevent exceeding the front GAWR.

According to the NHTSA (National Highway Traffic Safety Administration) new and untitled vehicles need to be verified by the installer that snowplow and ballast (if needed) do no exceed the front/rear GAWR and total GVWR.

	Read the Meyer Owner's Manual before operating or servicing a snowplow. <b>FOLLOW THESE INSTRUCTIONS EXPLICITLY.</b>
--	--

#### GENERAL INFORMATION

	<b>SAFETY PRECAUTIONS</b> should be used when <b>Hydraulic Unit is in OPERATION</b> and plow is in a <b>RAISED</b> position. <b>Lower plow to ground when vehicle is PARKED in case of hydraulic failure.</b>
--	---

Check contents against the parts list to determine all are correct and included, and also to familiarize yourself with them.

	Warranty does not apply to a Meyer or Diamond product which has been negligently or improperly assembled or installed.
	<b>CAUTION: To avoid harm to vehicles electrical system always</b> disconnect battery before beginning installation. <b>DO NOT BURN</b> holes or <b>WELD</b> vehicle frame. This may cause frame failure.

**OVERHAUL and SERVICE INFORMATION** are covered on separate instructions.

Meyer Products and Diamond Equipment reserves the right, under its continuing product improvement program, to change construction or design details, specifications and prices without notice or without incurring any obligation.

Meyer Products Inc.  
18513 Euclid Ave. • Cleveland, Ohio 44112-1084  
Phone 486-1313 (Area Code 216)  
www.meyerproducts.com • email info@meyerproducts.com

Diamond Equipment  
6 Angell Lane • Damariscotta, ME 04543-4507  
Phone 563-2227 (Area Code 207)  
www.diamondplow.com • email info@diamondplow.com

## PARTS LIST

ITEM	PART NO.	QTY.	DESCRIPTION
	17151	1	<b>MOUNTING CARTON</b>
1	19531	1	• L.H.Hanger Weld
2	19530	1	• R.H. Hanger Weld
3	19532	1	• Underframe Weldment 04' Nissan Titan
	08855	1	• <b>HARDWARE BAG</b>
4	10844	1	•• Spacer
5	11291	4	•• Spacer
6	19539	1	•• Sleeve
7	20096	8	•• Bolt 1/2-13 x 1-3/4" Gr. 5
8	20141	2	•• Bolt 5/8-11 x 2" Gr. 5
9	20152	1	•• Bolt 5/8-11 x 5" Gr. 5
10	14595	3	•• 3/4" J-Bolt
11	20307	8	•• Locknut Esna 1/2-13
12	20309	3	•• Locknut Esna 5/8-11
13	20310	3	•• Locknut Esna 3/4-10
14	20357	1	•• Flatwasher 5/8"
*	19370	1	<b>Universal Clevis (Part of Plus CLF Carton)</b>
**	11770	1	<b>Universal Clevis (Part of MDII CLF Carton)</b>
	<b>11" SAF</b>		<b>MEYER</b>
	<b>PART NO.</b>	<b>QTY.</b>	<b>DESCRIPTION</b>
	16520	1	<b>Sector A-Frame Carton</b>

Parts indented are included in the carton, bag or assembly under which they are indented.

### IMPORTANT

After first use, retighten all mounting bolt connections to specified torque. All mounting bolt connections to be checked periodically for tightness.

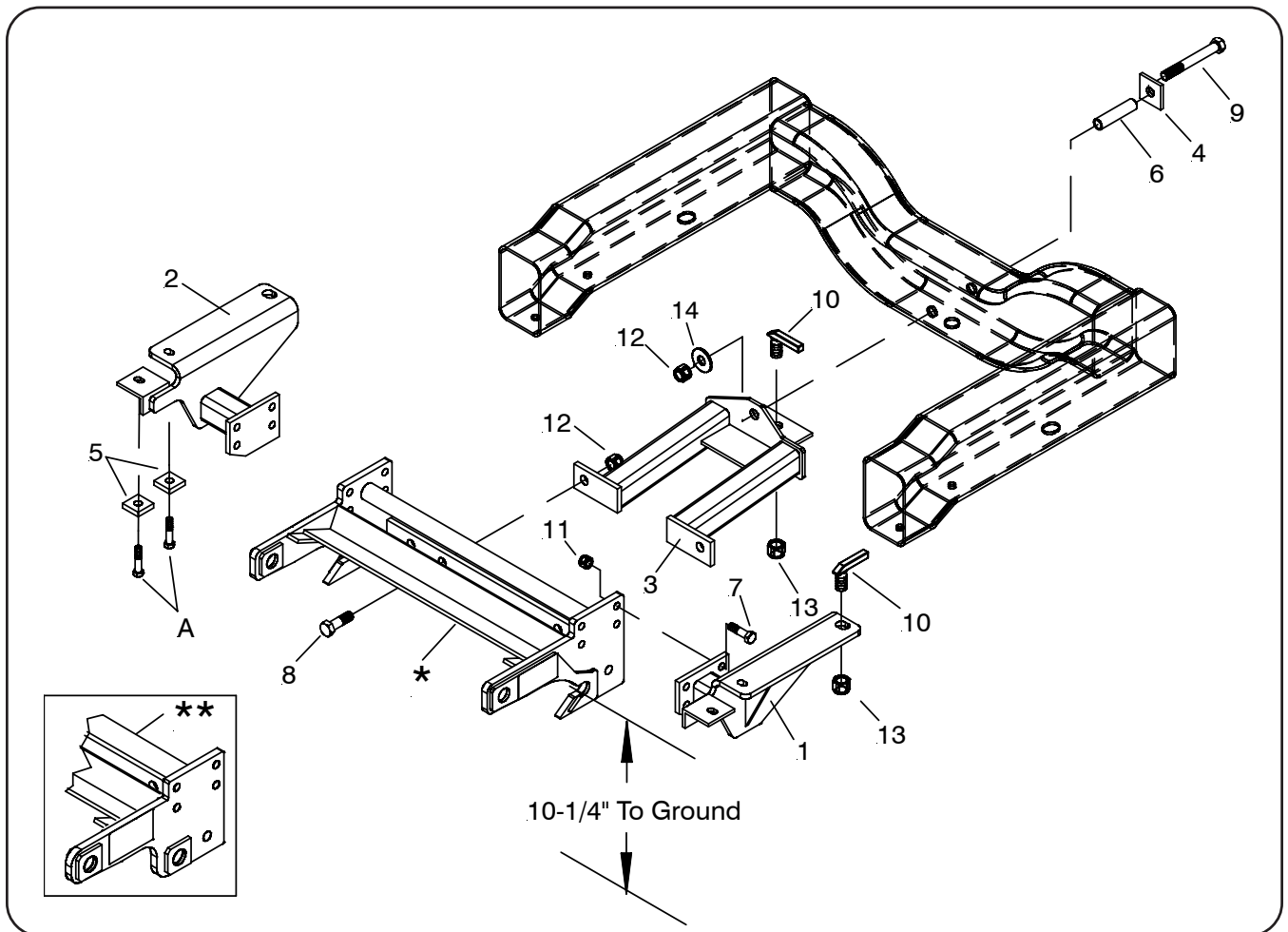
Locknuts are furnished **DO NOT** tighten bolts and nuts until installation is complete (unless otherwise specified), then be sure to tighten all attaching parts per specified torque chart.

### TORQUE CHART FOOT

Bolt Nut Size	Gr. 2	Gr. 5	Gr. 8
1/4-20	4-5		
5/16-18	9-11		
3/8-16	17-20	26-29	
7/16-14		42-46	60-66
1/2-13		64-72	90-100
5/8-11		127-141	179-198

#### NOTE:

THIS MOUNTING CARTON CAN BE USED WITH THE MDII OR EZ MOUNT PLUS CLF CARTONS.



## VEHICLE RECOMMENDATIONS

The STL-7.5 is the only moldboard recommended for this application.

The weight of the plow requires that the truck be outfitted with ballast behind the rear axle to counter-balance some of the weight on the front axle. It is recommended that the Meyer Ballast Carrier part number 08828 be installed in the 2" square receiver hitch and approximately 560lbs. (Titan), 710lbs. (Pathfinder) of ballast be attached to it. Salt or sand in bags is recommended as ballast.

### **⚠WARNING**

- A ballast weight may be required to prevent front GAWR overloading. If required, ballast must be securely attached at least 24 inches behind the rear axle. Ballast weight should not exceed 800 lbs.

### **⚠WARNING**

- Front end wheel alignment and headlight aim may require readjustment after installation of equipment, and is the responsibility of the equipment installer. Failure to adjust front wheel alignment may cause premature uneven tire wear. If required, reset to chassis manufacturer's specifications found in the Nissan Shop Manual.

Rear ballast is determined by weighing a vehicle's front and rear axles and adding weight behind the rear axle until front axle weight is under or equal to the vehicle specific front GAWR while not exceeding the rear GAWR and GVWR.

Vehicle option packages may vary. If in doubt, it is always a good idea to weigh the vehicle to ensure all weight ratings are not exceeded with plow in the raised position.

## INSTALLATION INSTRUCTIONS

- A. Remove skid plate and air dam at bottom of bumper. Both will not be reinstalled.
- B. Remove tow hooks. The mounting bolts (A) will be reused but the tow hooks will not be reinstalled.
- C. Install LH and RH side members( 1 & 2 ) as shown using the tow hook mounting bolts (A) and spacers (5) at the front and handle bolts (10 ) and 3/4 -10 Locknuts (13) at the other ends of the side members ( 1 & 2 ).

**Note: spacers (5) are to be installed on the outside of the mounting allowing the side members ( 1 & 2 )to fit snug against the vehicle frame.**

- D. Install Clevis frame(\*) between the side members using 1/2-13 x 1-3/4" long bolts (7) and locknuts (11). Snug bolts but do not tighten at this time.
- E. Install Under frame (3) starting with handle bolt (10) and 3/4-10 Locknut (13) at rear end underneath. The short tip of the handle bolt (10) may have to be ground some to allow it to fit in the hole in the bottom of the frame. Using 5/8-11 x 2" long bolts (8), and 5/8-11 locknuts (12) attach legs to clevis. Install 5/8-11 x 5" bolt (9) forward through the rear cross member with spacer (4) under head and sleeve(6) on bolt. Fasten using 5/8 flatwasher (14) and 5/8-11 locknut (12).

**Note: Before tightening the fasteners, the Clevis Frame (\*) should be level with the ground and pushed back as far under the vehicle as possible.**

**Note: In order to tighten the 5/8-11 x 5" bolt (9) it may be necessary to remove chassis cover located behind skid plate.**

- F. Tighten all fasteners to their proper torque. Tighten bolts in the same order they were assembled to the vehicle.
- G. Install remaining snowplow hardware per separate instructions.

**Meyer Products or Diamond Equipment assumes no responsibility for installations not made in accordance with these instructions.**