



PARTS & INSTALLATION INSTRUCTIONS

MDII™ and EZ MOUNT PLUS™

SNOW PLOW MOUNTING 17155

2005 & Later Mitsubishi Fuso

4x4 MODELS

End user must be given this instruction sheet prior to delivery of this Snow Plow.

SAFETY DEFINITIONS

| | |
|--|--|
| | This is the safety alert symbol. It is used to alert you to potential personal injury hazards. Obey all safety messages that follow this symbol to avoid possible injury or death. |
| | DANGER Indicates an imminently hazardous situation which, if not avoided, will result in death or serious injury. |
| | WARNING Indicates a potentially hazardous situation which, if not avoided, could result in death or serious injury. |
| | CAUTION Indicates an potentially hazardous situation which, if not avoided, may result in minor or moderate injury. |
| | CAUTION used without the safety alert symbol indicates a potentially hazardous situation which, if not avoided, will result in property damage. |

IMPORTANT NOTICE

In conjunction with FMVSS (Federal Motor Vehicle Safety Standards) and OEM (Original Equipment Manufacturer) guidelines, Meyer Products has designed this plow package with the following guidelines:

| | |
|--|---|
| | Installation of a snowplow may effect your new vehicle warranty. For more information consult your Vehicle Owner's Manual / Vehicle Dealer. |
| | The vehicle must not be operated when overloaded. In all cases, the loaded vehicle weight, including the entire snowplow system, all aftermarket accessories, driver, passenger, options, nominal fluid levels, and cargo must not exceed the front/rear Gross Axle Weight Rating (GAWR), and total Gross Vehicle Weight Rating (GVWR). These weights ratings are specified on the safety compliance certification label on the driver's side door opening. The use of rear ballast weight may be required to prevent exceeding the front GAWR. |

According to the NHTSA (National Highway Traffic Safety Administration) new and untitled vehicles need to be verified by the installer that snowplow and ballast (if needed) do no exceed the front/rear GAWR and total GVWR.

| | |
|--|--|
| | Read the Meyer Owner's Manual before operating or servicing a snowplow. FOLLOW THESE INSTRUCTIONS EXPLICITLY. |
|--|--|

GENERAL INFORMATION

| | |
|--|---|
| | SAFETY PRECAUTIONS should be used when Hydraulic Unit is in OPERATION and plow is in a RAISED position. Lower plow to ground when vehicle is PARKED in case of hydraulic failure. |
|--|---|

Check contents against the parts list to determine all are correct and included, and also to familiarize yourself with them.

| | |
|--|--|
| | Warranty does not apply to a Meyer or Diamond product which has been negligently or improperly assembled or installed. |
|--|--|

| | |
|--|---|
| | CAUTION: To avoid harm to vehicles electrical system always disconnect battery before beginning installation. DO NOT BURN holes or WELD vehicle frame. This may cause frame failure. |
|--|---|

OVERHAUL and SERVICE INFORMATION are covered on separate instructions.

Meyer Products and Diamond Equipment reserves the right, under its continuing product improvement program, to change construction or design details, specifications and prices without notice or without incurring any obligation.

Meyer Products Inc.
18513 Euclid Ave. • Cleveland, Ohio 44112-1084
Phone 486-1313 (Area Code 216)
www.meyerproducts.com • email info@meyerproducts.com



Diamond Equipment
6 Angell Lane • Damariscotta, ME 04543-4507
Phone 563-2227 (Area Code 207)
www.diamondplow.com • email info@diamondplow.com

PARTS LIST

| ITEM | PART NO. | QTY. | DESCRIPTION |
|----------------|-----------------|-------------|---|
| | 17155 | 1 | MOUNTING CARTON |
| 1 | 19678 | 1 | • R.H. Brace Assembly |
| 2 | 19677 | 1 | • L.H. Brace Assembly |
| 3 | 19666 | 1 | • R.H. Hanger |
| 4 | 19667 | 1 | • L.H. Hanger |
| | 08873 | 1 | • Hardware Bag |
| 5 | 20096 | 10 | •• Bolt H 1/2-13 x 1-3/4" Gr. 5 |
| 6 | 20141 | 6 | •• Bolt H 5/8-11 x 2" Gr. 5 |
| 7 | 22079 | 2 | •• Bolt H M10-1.25 x 35mm |
| 8 | 22133 | 5 | •• Bolt H M14-2 x 50mm Gr. 8.8 |
| 9 | 20307 | 10 | •• Locknut ESNA 1/2-13 |
| 10 | 20309 | 6 | •• Locknut ESNA 5/8-11 |
| 11 | 22084 | 5 | •• Hex Nut M14-2 |
| 12 | 22177 | 2 | •• Hex Nut M10 x 1.5 Plt |
| 13 | 20354 | 2 | •• Flatwasher 7/16" |
| 14 | 20357 | 2 | •• Flatwasher 5/8" |
| 15 | 22134 | 4 | •• Special Washer 5/8" |
| * | 19370 | 1 | Universal Clevis (Part of Plus CLF Carton) |
| ** | 11770 | 1 | Universal Clevis (Part of MDII CLF Carton) |
| 15" SAF | | | MEYER |
| | PART NO. | QTY. | DESCRIPTION |
| | 16516 | 1 | Sector A-Frame Carton |
| DIAMOND | | | |
| | 81504 | 1 | Common Attaching Kit |
| | 81026 | 1 | Push Frame |

Parts indented are included in the carton, bag or assembly under which they are indented.

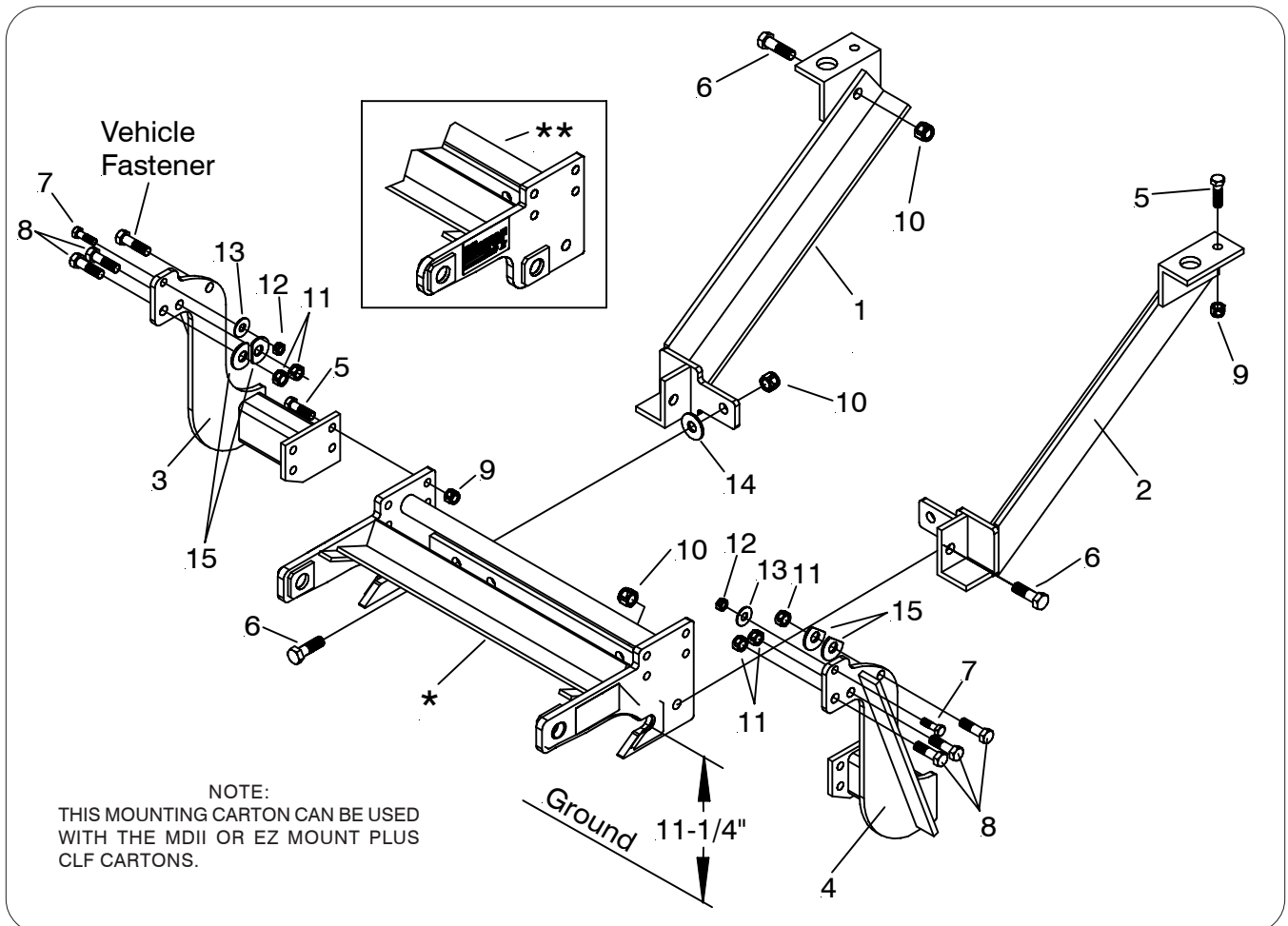
IMPORTANT

After first use, retighten all mounting bolt connections to specified torque. All mounting bolt connections to be checked periodically for tightness.

Locknuts are furnished **DO NOT** tighten bolts and nuts until installation is complete (unless otherwise specified), then be sure to tighten all attaching parts per specified torque chart.

TORQUE CHART FOOT

| Bolt Nut Size | Gr. 2 | Gr. 5 | Gr. 8 |
|---------------|---------|-----------|-----------|
| 1/4 - 20 | 4 - 5 | | |
| 5/16 - 18 | 9 - 11 | | |
| 3/8 - 16 | 17 - 20 | 26 - 29 | |
| 7/16 - 14 | | 42 - 46 | 60 - 66 |
| 1/2 - 13 | | 64 - 72 | 90 - 100 |
| 5/8 - 11 | | 127 - 141 | 179 - 198 |



VEHICLE RECOMMENDATIONS

Vehicle option packages may vary. If in doubt, it is always a good idea to weigh the vehicle to ensure all weight ratings are not exceeded with plow in the raised position.

⚠WARNING

- A ballast weight may be required to prevent front GAWR overloading. If required, ballast must be securely attached at least 24 inches behind the rear axle.
- Front end wheel alignment and headlight aim may require readjustment after installation of equipment, and is the responsibility of the equipment installer. Failure to adjust front wheel alignment may cause premature uneven tire wear. If required, reset to chassis manufacturer's specifications found in the Mitsubishi Shop Manual.

Rear ballast is determined by weighing a vehicle's front and rear axles and adding weight behind the rear axle until front axle weight is under or equal to the vehicle specific front GAWR while not exceeding the rear GAWR and GVWR.

Vehicle option packages may vary. If in doubt, it is always a good idea to weigh the vehicle to ensure all weight ratings are not exceeded with plow in the raised position.

INSTALLATION INSTRUCTIONS

- A. Remove outer bumper covering by removing carriage bolts and hex head bolts on bottom of bumper.
- B. Remove bumper brackets on each side by removing three bolts on each side. These bolts will not be reused.
- C. On passenger's side remove next bolt back approximately in line with two larger bolts removed in step B.
- D. On passenger side install RH Hanger (3) on the outside of bumper bracket which is positioned to the outside of the frame as it was originally installed on vehicle. Use 7/16"(13) and 5/8" special flat washers (15) to space the hanger out from the bumper bracket. (No washer will be used on the bolt removed in step C.) Install M10-1.25 x 35mm (7) and M14-2 x 50mm (8) bolts and M10 x 1.5 (12) and M14-2 (11) nuts to hold the RH Hanger (3). Also install the bolt that was removed in step C through the hanger back in the threaded hole that it came from.
- E. On driver's side install LH Hanger (4) on the outside of bumper bracket. Use two 5/8" special flat washers (15) to space the hanger out from the hole in the frame farthest toward the rear of the vehicle. Install M10-1.25 x 35mm (7) and M14-2 x 50mm (8) bolts as well as M10 x 1.5 (12) and M14-2 (11) nuts to hold the RH Hanger (4).

- F. Install clevis(*) using 1/2"-13 x 1-3/4 bolts (5) and 1/2"-13 locknuts (9).
- G. Remove LH and RH second vertical vehicle bolt holding the bracket which mounts the radiators to the frame. This hardware will not be reused.
- H. Position the LH and RH Braces (1 & 2) with the large clearance holes over the first vertical bolt head. Use 1/2-13 x 1-3/4 bolts (5) and locknuts (9) in the second hole to attach braces to vehicle.
- I. Attach LH and RH Braces (1 & 2) to clevis(*) using 5/8-11 x 2 bolts (6) and locknuts (10).
- J. Snug bolts to hold the mounting in its final position.

CAUTION: In this next step it is necessary to position a thick plate between the side brackets and the radiators to prevent accidentally drilling beyond the side plate into a radiator. Have an assistant hold this in place while you are drilling.

- K. Line up a 11/16" diameter drill through the hole that goes through both the upper angle and the long angle of the brace. Drill a hole through the radiator bracket on both the drivers side and the passenger side.
- L. Install 5/8-11 x 2 bolts (6) and locknuts (10) to hold LH & RH Braces (1 & 2) to the radiator brackets.

Note: Before tightening the fasteners, the Clevis Frame (*) should be level with the ground and pushed back as far under the vehicle as possible.

- M. Tighten all fasteners to their proper torque. Tighten bolts in the same order they were assembled to the vehicle.
- N. Install remaining snowplow hardware per separate instructions.

Meyer Products or Diamond Equipment assumes no responsibility for installations not made in accordance with these instructions.