

# PARTS & INSTALLATION INSTRUCTIONS

## MEYER SNOW PLOW MOUNTING

### UTILITY BUMPER to FRAME (UBF)

#### IMPORTANT NOTICE

**End user must be given this instruction sheet prior to delivery of this Snow Plow.**

The equipment you have just purchased should only be used on vehicles equipped with the Manufacturer's Snow Plow Preparation Packages. Snow Plowing without the original Snow Plow Preparation Package may damage your vehicle and the added weight to the equipment may impair the operation and control of the vehicle. Snow Plowing with a vehicle that the manufacturer does not recommend for that purpose may void your new vehicle warranty. If your vehicle is not originally equipped with the Snow Plow Package, additional parts may be necessary before snow plowing. Owners of these vehicles should consult their dealers before purchase or installation of such parts. CAUTION: the installation, on any vehicle, of these parts is not a full substitute for the original equipment Snow Plow Preparation Package.

**Warning: Lift Arm extends beyond bumper of vehicle. To minimize damage from a front-end collision, Lift Arm should be removed from vehicle when Snow Plow is removed.**

#### PARTS LIST

ITEM	PART NO.	QTY.	DESCRIPTION		
	17056	1	MOUNTING CARTON		
1	10303	1	• Lift Frame		
2	10311	1	• Bumper Angle.		
3	10314	1	• R.H. Brace		
4	10315	1	• L.H. Brace		
5	10316	4	• Mounting Clip		
6	10346	2	• Light Bracket		
7	14219	1	• Lift Arm		
8	08431	1	• HARDWARE BAG - MTG.		
9	20028	4	•• Bolt H 5/16-18 x 1-1/4" Gr.5		
10	20141	2	•• Bolt H 5/8-11 x 2" Gr.5		
11	20142	8	•• Bolt H 5/8-11 x 2-1/4" Gr. 5		
12	20144	1	•• Bolt H 5/8-11 x 2-3/4" Gr. 5		
13	20146	2	•• Bolt H 5/8-11 x 3-1/4" Gr.5		
14	20167	2	•• Bolt 3/4-10 x 2"Gr.5		
15	20313	4	•• Locknut 5/16-18		
16	20309	13	•• Locknut 5/8-11		
17	20310	2	•• Locknut 3/4-10		
18	20357	8	•• Flatwasher 5/8"		
18	21939	4	•• Bevel Washer 5/8"		
ITEM	11" Sector		15" Sector		DESCRIPTION
	PART NO.	QTY.	PART NO.	QTY.	
19	16478	1	16479	1	SECTOR -A-FRAME CARTON
	12326	1	12793	1	• Sector
	13304	1	13556	1	• A- Frame
	07017	3	07017	4	• Trip Spring
	09916	1	09916	1	• Marker Kit
	08201	2	08201	2	•• PlowMarker Ass'y
	12816	2	12816	2	•• Clamp
	20005	2	20005	2	•• Bolt H 1/4-20 x 1"
	20312	2	20312	2	•• Locknut 1/4-20
20 21	08166	1	08341	1	• PLOW HARDWARE BAG
	09119	2	09119	2	•• Pivot Pin w/Cotter
	11101	2	11101	2	•• Hinge Pin
	22083	2	22083	2	•• Linch Pin
	09122	1	09125	1	•• King Bolt w/Locknut
	09124	3	09124	4	•• Eye Bolt w/Locknuts

Parts indented are included in the carton, bag or assembly under which they are indented. When ordering parts, furnish Part No., Name, and Description. Also furnish Vehicle Model and Year. Type of Hydraulic Unit and Moldboard Size.

Meyer Products reserves the right, under its continuing product improvement program, to change construction or design details, specifications and prices without notice or without incurring any obligation.

## GENERAL INFORMATION

**CAUTION:** Always disconnect battery before beginning installation.

**DO NOT BURN** holes or **WELD** vehicle frame. This may cause frame failure.

After first use, retighten all mounting bolt connections to specified torque. All mounting bolt connections to be checked periodically for tightness.

Locknuts are furnished **DO NOT** tighten bolts and nuts until installation is complete (unless otherwise specified), then be sure to tighten all attaching parts per specified torque chart.

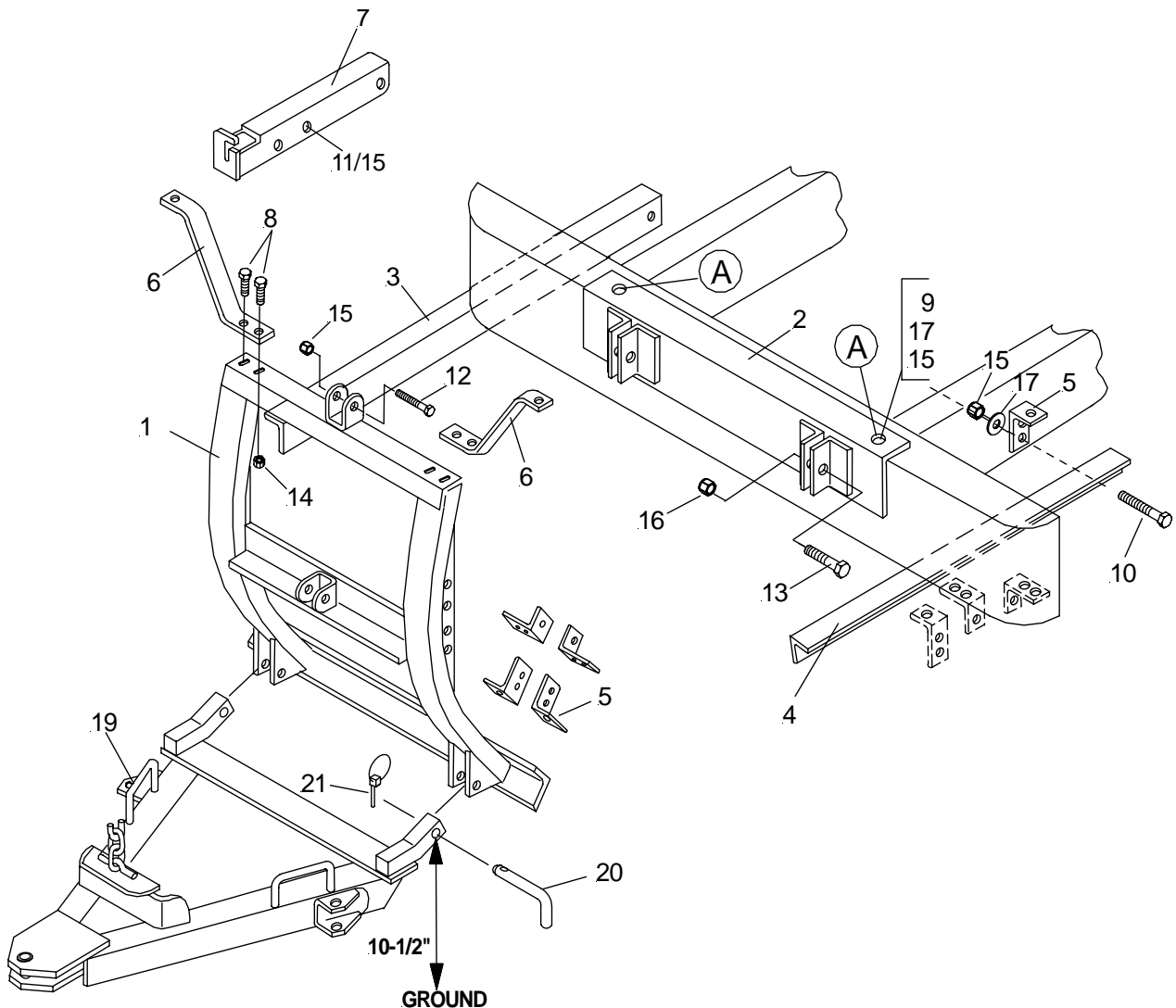
Check contents against the parts list to determine all are correct and included, and also to familiarize yourself with them.

**NOTE:** It is important that the Meyer harness, all wires from the Meyer light switch, and all other electrical wires be routed around hot or moving engine parts, and any sharp metal. Protection must be provided to guard against wire damage at these points. All excess or loose wires must be neatly secured using wire ties.

**SAFETY PRECAUTIONS** should be used when **Hydraulic Unit is in OPERATION** and plow is in a **RAISED** position. **Lower plow to ground when vehicle is PARKED.**

**OVERHAUL** and **SERVICE INFORMATION** are covered on separate instructions.




Follow these instructions explicitly. Warranty does not apply to a Meyer product which has been negligently or improperly assembled or installed.



## INSTALLATION INSTRUCTIONS

- A. Center Bumper Angle (2) on vehicle bumper and clamp in position.
  - B. Drill two 11/16 diameter holes "A" through Bumper Angle (2) and vehicle bumper attachment to the vehicle frame.
  - C. To keep Bumper Angle (2) perpendicular to the ground, it may be necessary to use bevel washers (18) between Bumper Angle (2) and vehicle bumper. Bolt Bumper Angle (2) to vehicle bumper with 5/8-11 x 2" bolts (9), flat washers (17) and locknuts (15).
  - D. Attach Lift Frame (1) to Bumper Angle (2) with 3/4-10 x 2-3/4" bolts (13) and locknuts (16) to obtain a dimension of 10-1/2" as shown.
  - E. Determine optimum position for Braces R.H. and L.H. (3&4) and the Mounting Clips (5). It may be possible to attach Braces (3&4) directly to vehicle frame rails. Bolt Braces R.H. & L.H. (3&4) and Mounting Clips (5) into position using two 5/8 -11 x 2-1/4" bolts (10) flat washers (17) and locknuts (15) so the Mounting cannot pivot about this point. For additional strength, Braces R.H. & L.H. (3&4) and Mounting Clips (5) may be welded. Do not weld to vehicle frame.
  - F. **IMPORTANT:** Once installation is complete, verify that mounting pieces do not interfere with full movement of steering or suspension and can not contact any engine components or accessories.
  - G. Attach lift arm (7) to lift frame (1) using 5/8-11 x 3-1/4" bolt (12) and locknut (15).
  - H. Install Hydraulic Unit to Lift Frame (1) at the inner hole of Lift Arm (7). Hydraulic "H" units can NOT be used. Damage to Hydraulic Unit will occur.
  - I. Pre-Assemble Moldboard Assembly, A-Frame (19), Sector, ect., per separate instructions.
  - J. Connect the A-Frame (19) to the Lift Frame (1) using Hinge Pins (20) and Hair Pin Cotters (21).
  - K. Attach the A-Frame chain to the Lift Arm (7) allowing sufficient slack to enable the Moldboard to follow ground contour while plowing.
- NOTICE: Meyer Products assumes no responsibility for installations not made in accordance with these instructions.

## TORQUE CHART FOOT LBS.

Bolt Nut Size	Gr. 2 	Gr. 5 	Gr. 8 
1/4 - 20	4 - 5		
5/16 - 18	9 - 11		
3/8 - 16	17 - 20	26 - 29	
7/16 - 14		42 - 46	60 - 66
1/2 - 13		64 - 72	90 - 100
5/8 - 11		127 - 141	179 - 198
3/4 - 10		227 - 251	