

PARTS & INSTALLATION INSTRUCTIONS

MEYER SNOW PLOW MOUNTING FOR 1988 MAZDA 4X4 PICKUP

IMPORTANT NOTICE

End user must be given this instruction sheet prior to delivery of this snow plow.

The equipment you have purchased should only be used on vehicles equipped with the manufacturer's snow plow preparation packages. Snow plowing without the original snow plow preparation package may damage your vehicle and the added weight of the equipment may impair the operation and control of the vehicle. Snow plowing with a vehicle that the manufacturer does not recommend for that purpose may void your new vehicle warranty. If your vehicle is not originally equipped with the snow plow preparation package, additional parts may be necessary before snow plowing. Owners of these vehicles should consult their dealers before purchase or installation of such parts.

CAUTION: The installation, on any vehicle, of these parts is not a full substitute for the original equipment snow plow preparation package.

WARNING: Lift arm extends beyond bumper of vehicle. To minimize damage from a front-end collision. Lift arm should be removed from vehicle when snow plow is not in use.

PARTS LIST

Item	Part No.	Quantity	Description
1	18038	1	MOUNTING CARTON
2	11103	1	• Mounting Angle, L.H.
3	11102	1	• Mounting Angle, R.H.
4	11110	1	• Lift Frame
5	11112	1	• Clevis Frame
6	10715	1	• Light Bracket, L.H.
7	10716	1	• Light Bracket, R.H.
8	10529	1	• Support Arm
9	10514	1	• Lift Arm
10	12984	1	• Pivot Bar
11	13594	1	• A-Frame
	12978	2	• Trip Springs
12	08570	1	• Hardware Bag - Mounting
13	20066	6	• Bolt H 3/8-16 x 1-1/4" Gr 5
14	20105	2	• Bolt H 1/2-13 x 4" Gr 5
15	20141	6	• Bolt H 5/8-11 x 2" Gr 5
16	20144	1	• Bolt H 5/8-11 x 2-3/4" Gr 5
17	20147	1	• Bolt H 5/8-11 x 3-1/2" Gr 5
18	20307	2	• Locknut, 1-2-13
19	20309	8	• Locknut, 5/8-11
20	20355	2	• Flatwasher, 1/2
21	20357	2	• Flatwasher 5/8
22	20327	6	• Lockwasher, 3/8
23	0538	2	• Quick Disconnect Pin
	21984	2	• Hair Pin Cotter
24	08511	1	• Hardware Bag - Moldboard
25	11006	2	• Hinge Pins
26	21984	2	• Hair Pin Cotters
27	12150	2	• Eye Bolts
28	20309	5	• Locknuts 5/8-11
29	13598	2	• Pivot Bolts
30	13591	1	• King Bolt
31	20150	2	• Bolt: H 5/8-11 x 4-1/2" GR 5
	20318	4	• Nuts, E-Block, 5/8-11
32	09916	1	• Snow Plow Marker Kit
33	08201	2	• Snow Plow Marker Assy
34	12816	2	• Clamps
35	20005	2	• Bolt: H 1/4-20 x 1"
36	20312	2	• Locknuts, 1/4-20
	20325	2	• Lockwasher 1/4
	08470	1	• Kit, Electrical Disconnect
37	09102	1	MOLDBOARD ASSEMBLY TWO-METER
38	09100	1	• Cutting Edge - Two Meter
39	21943	6	• Bolt C 1/2-13 x 1-3/4"
40	20307	6	• Locknut 1/2-13

Parts indented are included in the carton, bag or assembly under which they are indented. When ordering parts furnish Part No., Name and Description. Also furnish Vehicle Model and Year, Type of Hydraulic Unit and Moldboard Size.

Meyer Products reserves the right, under its continuing product improvement program, to change construction or design details, specifications and prices without notice or without incurring any obligation.

GENERAL INFORMATION

CAUTION: Always disconnect battery before beginning installation.

DO NOT burn holes or weld vehicle frame. This may cause frame failure.

After first use retighten all mounting bolt connections to specified torque. All mounting bolt connections to be checked periodically for tightness.

Check contents against the parts list to determine all are correct and included, and also to familiarize yourself with them.

Locknuts are furnished. Do not tighten bolts and nuts until installation is complete (unless otherwise specified), then be sure to tighten all attaching parts per specified torque chart.

It is important that the Meyer harness, all wires from the Meyer light switch, and all other electrical wires be routed around hot or moving engine parts, and any sharp sheet metal. Protection must be provided to guard against wire damage at these points. All excess or loose wire must be neatly secured using wire ties.

TORQUE CHART FOOT LBS.

Bolt-Nut Size	GR. 2	GR. 5 or 8.8 Metric	GR. 8
1/4 - 20	4 - 5		
5/16 - 18	9 - 11		
3/8 - 16	17 - 20	26 - 29	60 - 66
7/16 - 14		42 - 46	90 - 100
1/2 - 13		64 - 72	179 - 198
5/8 - 11		127 - 141	
3/4 - 10		227 - 251	

INSTALLATION INSTRUCTIONS

- Remove tie down and tow hooks but retain the fasteners. Also remove front splash pan. It will not be reused. The rear splash pan will remain on the vehicle.
- Attach Mounting Angles (1 & 2) to vehicle frame using original vehicle tow hook fasteners.
- Place Lift Frame (3) and Clevis Frame (4) in position and attach to Mounting Angles (1 & 2) using 5/8 x 2" Bolts (14) and Locknuts (18). Also use a 5/8 Flatwasher (20) on the back slotted hole of Mounting Angles (1 & 2). Fasten back of Clevis Frame to vehicle crossmember using 1/2 x 4" Bolts (13), Locknuts (17) and Flatwashers (19).

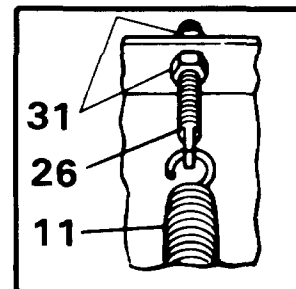
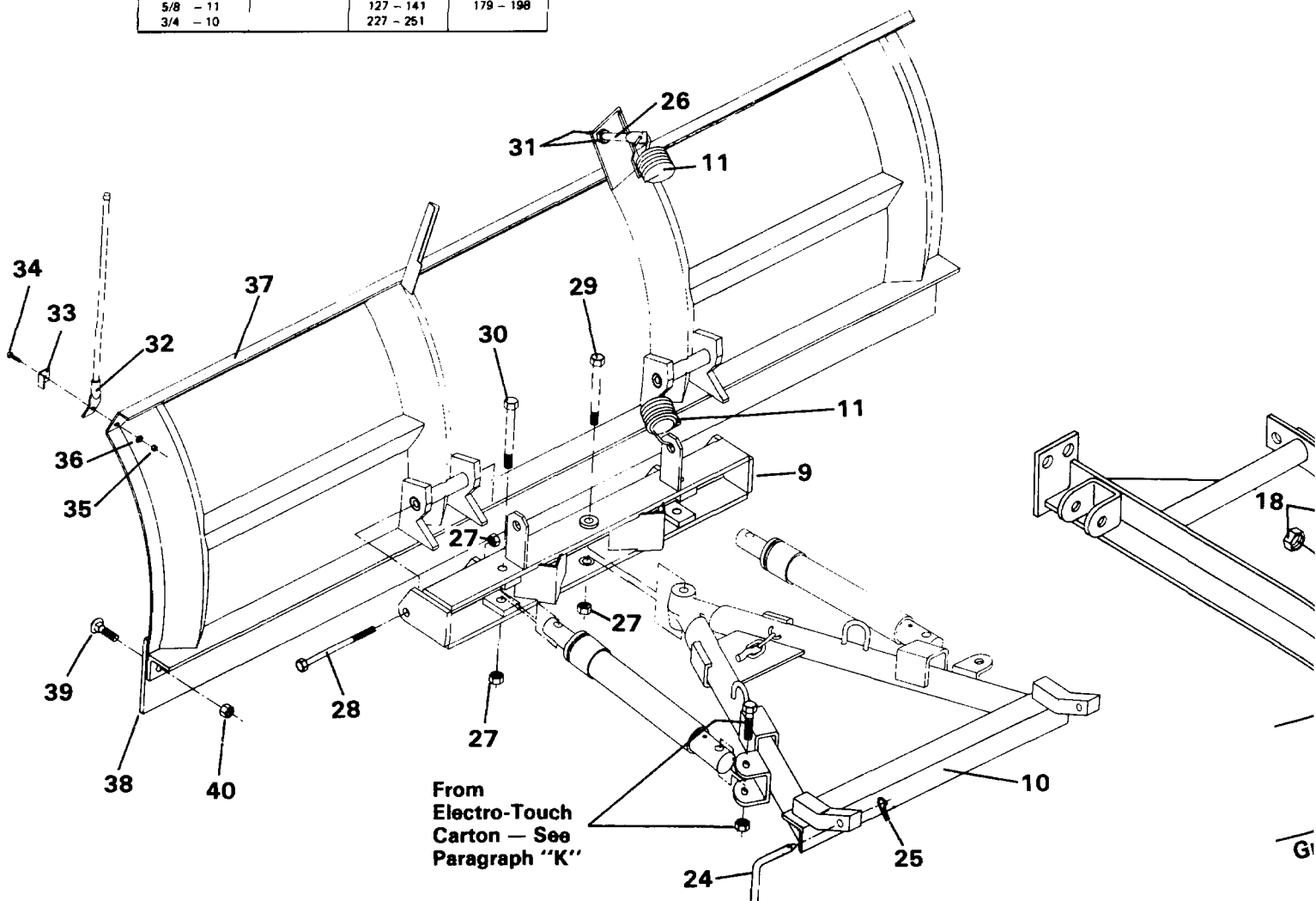
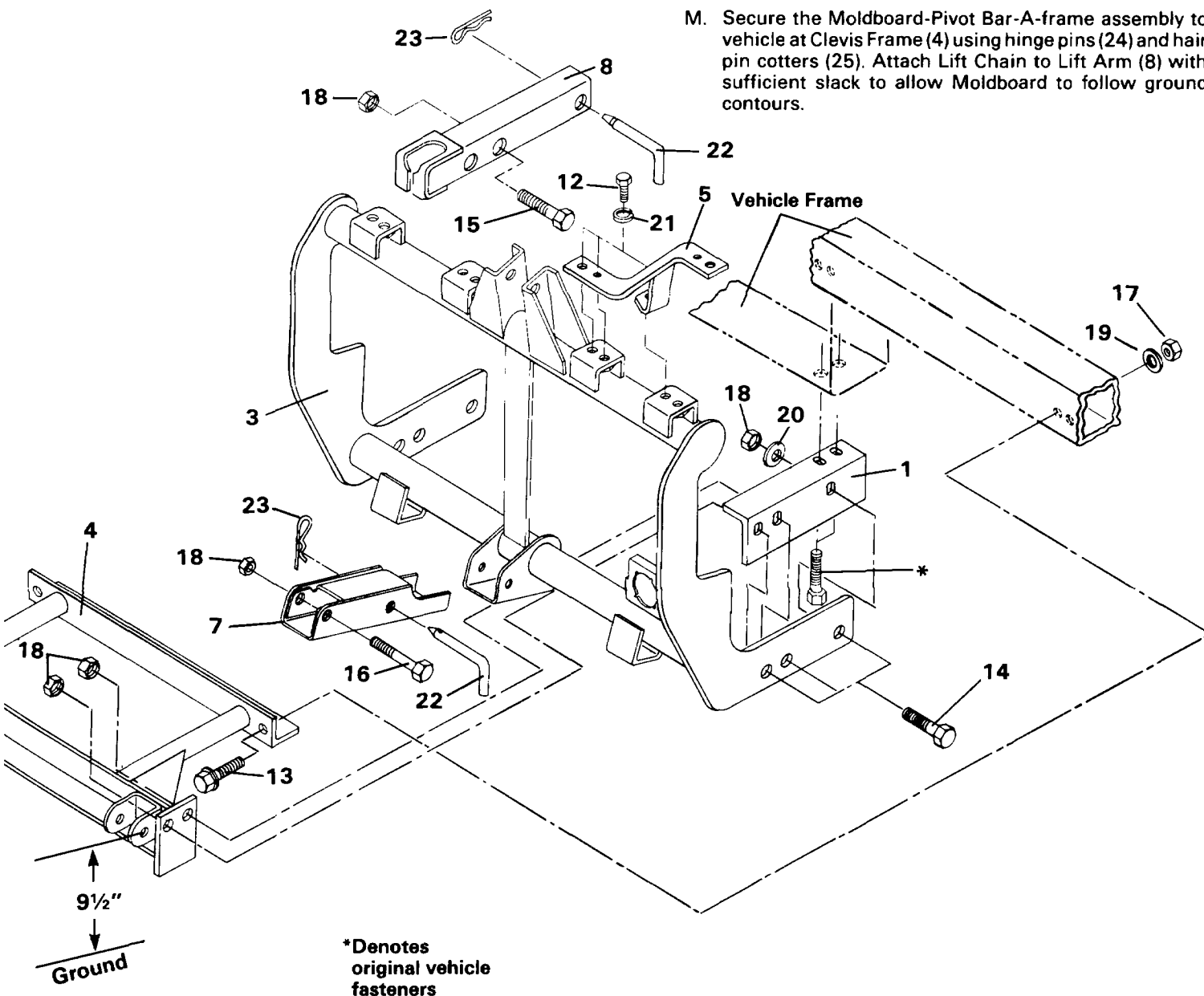


FIGURE 1



- D. Tighten all fasteners to proper torque, shown on torque chart, beginning with back of Clevis Frame (4) at vehicle crossmember. Then tighten Mounting Angles (1 & 2) to vehicle frame. Finally, tighten Lift Frame (3) and Clevis Frame (4) to Mounting Angles (1 & 2). There is ample play in the mounting holes to obtain the 9-1/2" clevis hole height.
- E. Attach Light Brackets (5 & 6) to weldnuts in Lift Frame (3) with 3/8" x 1-1/4" bolts (12) and 3/8" lockwashers (21). Install Headlights per separate instructions. Be certain back of Headlights do not interfere with opening and closing of vehicle hood.
- F. Attach Electro-Touch Unit to Support Arm (7) using 5/8" x 3-1/2" bolt (16) and 5/8" locknut (18) and to Lift Arm (8) using 5/8" x 2-3/4" bolt (15) and 5/8" locknut (18). Secure this assembly to Lift Frame (3) using Quick-Disconnect pins (22) and hair pin cotters (23).
- G. Install Electro-Touch wiring system per separate instructions.
- H. Attach Pivot Bar (9) to Moldboard (37) using pivot bolts (28) coated with chassis lubricant, and 5/8" locknut (27).
- I. Attach Trip Springs (11) to Pivot Bar (9) and Moldboard (37) with eye bolts (26) and locknuts (31). Flat end of eye bolt (26) must be in a vertical position, as shown in Figure 1, to hinge properly when Moldboard (37) trips. Proper tension is attained when Trip Spring (11) coils begin to separate and then tightening top locknut (31) four additional turns. Tighten bottom locknut (31) to secure eye bolt (26) in position. See Figure 1.
- J. Assemble A-frame (10) to Pivot Bar (9) using King bolt (29) and 5/8" locknut (27). Grease King bolt (29) prior to installation.
- K. Install Power-Angling Rams with fitting to the A-frame (10) using 5/8" x 3-1/4" bolt and 5/8" locknut (packed in hardware bag 08363 in Electro-Touch carton). Attach piston end of ram to Pivot Bar (9) using 5/8" x 4-1/2" bolt (30) and 5/8" locknut (27).
- L. Straighten end of Plow Markers (32) so they will be vertical after installation. Attach using 1/4" x 1" Bolt (34), Clamp (33), 1/4" Locknut (35) and Lockwasher (36).
- M. Secure the Moldboard-Pivot Bar-A-frame assembly to vehicle at Clevis Frame (4) using hinge pins (24) and hair pin cotters (25). Attach Lift Chain to Lift Arm (8) with sufficient slack to allow Moldboard to follow ground contours.



NOTICE: Meyer Products assumes no responsibility for installations not made in accordance with these instructions.