

PARTS & INSTALLATION INSTRUCTIONS

MEYER SNOW PLOW MOUNTING

1980 To 1983 FORD BRONCO, F150, F250, F350 4x4 VEHICLES

IMPORTANT NOTICE

End user must be given this instruction sheet prior to delivery of this Snow Plow.

The equipment you have just purchased should only be used on vehicles equipped with the Manufacturer's Snow Plow Preparation Packages. Snow Plowing without the original Snow Plow Preparation Package may damage your vehicle and the added weight to the equipment may impair the operation and control of the vehicle. Snow Plowing with a vehicle that the manufacturer does not recommend for that purpose may void your new vehicle warranty. If your vehicle is not originally equipped with the Snow Plow Package, additional parts may be necessary before snow plowing. Owners of these vehicles should consult their dealers before purchase or installation of such parts.

CAUTION: the installation, on any vehicle, of these parts is not a full substitute for the original equipment Snow Plow Preparation Package.
Warning: Lift Arm extends beyond bumper of vehicle. To minimize damage from a front-end collision, Lift Arm should be removed from vehicle when Snow Plow is removed.

PARTS LIST

ITEM	PART NO.	QTY.	DESCRIPTION		
	17077	1	MOUNTING CARTON		
1	10781	1	• LIFT FRAME		
2	11235	1	• SIDE MEMBER, LH		
3	11234	1	• SIDE MEMBER, RH		
4	10773	1	• CLEVIS FRAME		
5	10514	1	• LIFT ARM		
6	10774	2	• STRAP		
7	10785	1	• UNDERFRAME, FRONT		
8	10787	1	• UNDERFRAME, LH		
9	10786	1	• UNDERFRAME, RH		
	08501	1	HARDWARE BAG		
10	14595	2	•• SPECIAL BOLT, 314		
11	20139	6	•• BOLT H 5/8-11X1-1/2		
12	20140	8	•• BOLT H 5/8-11X1-3/4		
13	20141	2	•• BOLT H 5/8-11 X2		
14	20144	1	•• BOLT H 5/8-11X2-3/4		
15	20147	2	•• BOLT H 5/8-11X3-1/2		
16	20309	19	•• LOCKNUT 5/8-11		
17	20357	10	•• FLAT WASHER 5/8		
18	20164	2	•• BOLT H 3/4-10X2		
19	20166	2	•• BOLT H 3/4-10X2-112		
20	20310	6	•• LOCKNUT 314		
21	10622	2	•• SPACER, RH 1-1/16"		
22	10623	2	•• SPACER, LH 1-3/16"		
23	20355	6	•• FLATWASHER 1/2		
24	22003	2	•• BOLT H 112-13X2 GR. 8		
25	22004	4	•• BOLT H 112-13X2-112 GR. 8		
26	20307	6	•• LOCKNUT 112		
27	10797	2	•• SPACER		
	11" Sector		15" Sector		
	Part No.	Qty.	Part No.	Qty.	Description
	16288	1	06249	1	Sector & A-Frame Carton
	12326	1	12793	1	• Sector
	13306	1	13319	1	• A-Frame
	07017	3	07017	4	• Trip Spring
	08166	1	08341	1	• Plow Hardware Bag
	09119	2	09119	2	•• Pivot Pin w/Cotter Pin
	11101	2	11101	2	•• Hinge Pin
	22083	2	22083	2	•• Linch Pin
	09122	1	09125	1	•• King Bolt w/Locknut
	09124	3	09124	4	•• Eye Bolt w/Locknut
	09916	1	09916	1	•• Plow Marker Kit
	08201	2	08201	2	••• Plow Marker Assembly
	12816	2	12816	2	••• Clamp
	20005	2	20005	2	••• Bolt H 1/4-20 z GR. 2
	20312	2	20312	2	••• Locknut 1/4-20

Parts indented are included in the carton, bag or assembly under which they are indented.

Meyer Products reserves the right, under its continuing product improvement program, to change construction or design details, specifications and prices without notice or without incurring any obligation.

GENERAL INFORMATION

CAUTION: Always disconnect battery before beginning installation.

DO NOT BURN holes or **WELD** vehicle frame. This may cause frame failure.

After first use, retighten all mounting bolt connections to specified torque. All mounting bolt connections to be checked periodically for tightness.

Locknuts are furnished **DO NOT** tighten bolts and nuts until installation is complete (unless otherwise specified), then be sure to tighten all attaching parts per specified torque chart.

NOTE: It is important that the Meyer harness, all wires from the Meyer light switch, and all other electrical wires be routed around hot or moving engine parts, and any sharp metal. Protection must be provided to guard against wire damage at these points. All excess or loose wires must be neatly secured using wire ties.

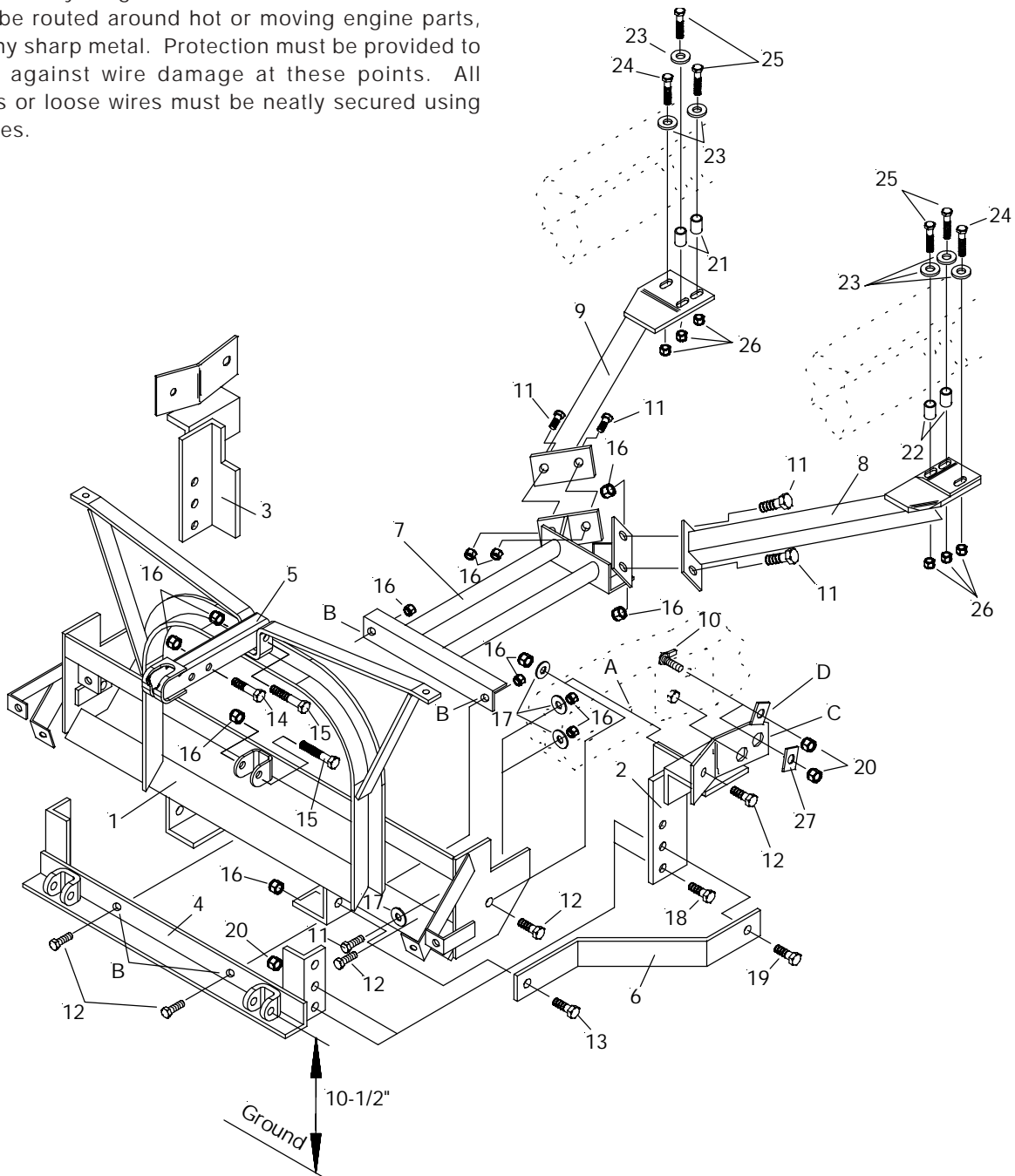
Check contents against the parts list to determine all are correct and included, and also to familiarize yourself with them.

SAFETY PRECAUTIONS should be used when **Hydraulic Unit is in OPERATION** and plow is in a **RAISED** position. **Lower plow to ground when vehicle is PARKED.**

OVERHAUL and **SERVICE INFORMATION** are covered on separate instructions.

Follow these instructions explicitly. Warranty does not apply to a Meyer product which has been negligently or improperly assembled or installed.

Vehicles must have heavy duty front end equipment as recommended by Ford Motor Company for snow plow applications.



INSTALLATION INSTRUCTIONS

- A. Remove front bumper, retain bumper bolts.
- B. Install Lift Frame (1) using 5/8 x 1-3/4 Bolt (12), 5/8x 1-1/2 Bolt (11), 5/8 Flat Washers (17) and 5/8 Locknuts (16) .
- C. Insert special 3/4 Bolt (10) in slotted hole in vehicle frame to hold Side Members (2, 3) in place with 3/4 Nut (20). Due to vehicle variations, use either hole "C" or "D" in side members (2 & 3) depending on corresponding holes in vehicle frame. Spacer (27) is only used with hole "C".




Note: Prior to tightening special bolt on the passenger-side member, make certain spacer (27) is properly aligned over large hole in side member top plate. After the passenger side special bolt has been tightened to its recommended torque, the spacer should be tack welded in place onto the sidemember. This is to insure the proper installation of the Special bolt into the side of the vehicle frame.
- D. Attach Strap (6) to Lift Frame (1) with 5/8 x 2 Bolt (13) and Locknut (16) .
- E. Maintain 10-1/2" ground clearance to center of hinge pinhole. Install Clevis Frame (4) to Side Members (2,3) using 3/4 x 2 Bolt (18) and 3/4 Locknut (20) . Attach Strap (6) to Side Member (2, 3) using center hole only, with 3/4 x 2-1/2 Bolt (19) and Locknut (20). After the Clevis Frame (4) is installed at its proper height, cut off the part of the Sidemembers (2 & 3) which may extend below the Clevis Frame (4) .
- F. Place Front Underframe (7) in position and install to Clevis Frame (4) at holes "B" using 5/8 x 1-3/4 Bolts (12), and 5/8 Locknuts (16) .
- G. Attach the Left-hand Underframe (8) to the Front Underframe (7) using 5/8 x 1 -1 /2 Bolts (11) and 5/8 Locknuts (16). The rear portion is attached to the transmission support Cross Member and Frame Rail using two 1/2 x 2-1/2 Gr. 8 Bolts (25), one 1/2 x 2 Gr. 8 Bolt (24), two L.H. Spacers (22), 1/2" Flat Washers (23) and 1/2 Locknuts (26).

NOTE: Do not remove all three vehicle bolts at once or you will experience difficulty in aligning the holes again. The original vehicle bolts are discarded.

NOTE : With vehicle on ground there must be a minimum 3/4" clearance between Front Under-frame (7) and front axle.

- H. Attach the Right-hand Underframe (9) to the Front Underframe (7) and vehicle Cross Member in the same manner, using the R.H. Spacers (21) in the rear.
- I. Before tightening lift frame bolts, pull top of lift frame forward to take out the slack in the bolt holes. Tighten all bolts per specified torque chart, leaving the Sidemembers (2 & 3) until last.
- J. Use hole "A" in Sidemembers (2 & 3) as a guide to ream hole in vehicle frame using 11/16" drill. Install 5/8 x 1-3/4 Bolt (12), 5/8 Flatwasher (17) and 5/8 Locknut (16). Tighten to proper torque .
- K. Assemble Lift Arm (5) to Lift Frame (1) with 5/8 x 3-1/2 Bolt (15) and 5/8 Locknut (16). Attach Electro-touch unit to inner hole of Lift Arm (5) using 5/8 x 2-3/4 Bolt (14) and 5/8" Locknut (16) .
- L. Reinstall bumper to bumper brackets on Lift Frame (1) using original bumper bolts.
- M. Install hydraulic system and snow plow lights per separate instructions .
- N. Pre-assemble Moldboard, A-Frame and Sector per separate instructions .
- O. Connect A-Frame to ' Clevis Frame using Hinge Pins (28) and Spring Clips (29) .
- P. Hook the A-Frame chain to Lift Arm (5) allowing sufficient slack to enable the moldboard to follow ground contour while plowing.

TORQUE CHART FOOT LBS.

Bolt Nut Size	Gr. 2 	Gr. 5 	Gr. 8 
1/4 - 20	4 - 5		
5/16 - 18	9 - 11		
3/8 - 16	17 - 20	26 - 29	
7/16 - 14		42 - 46	60 - 66
1/2 - 13		64 - 72	90 - 100
5/8 - 11		127 - 141	179 - 198
3/4 - 10		227 - 251	

Meyer Products assumes no responsibility for installations not made in accordance with these instructions.