

**PARTS & INSTALLATION INSTRUCTIONS
MEYER SNOW PLOW MOUNTING
2002 & LATER GMC C4500/5500
18000/19500 GVWR use HM/HMP-9' & 10'
16500 GVWR use C/CP-9' & HML 10'
Snow Plow Preparation Package (ANQ)**

IMPORTANT NOTICE

End user must be given this instruction sheet prior to delivery of this Snow Plow.

The equipment you have just purchased should only be used on vehicles equipped with the Manufacturer's Snow Plow Preparation Packages. Snow Plowing without the original Snow Plow Preparation Package may damage your vehicle and the added weight to the equipment may impair the operation and control of the vehicle. Snow Plowing with a vehicle that the manufacturer does not recommend for that purpose may void your new vehicle warranty. If your vehicle is not originally equipped with the Snow Plow Package, additional parts may be necessary before snow plowing. Owners of these vehicles should consult their dealers before purchase or installation of such parts. **CAUTION:** the installation, on any vehicle, of these parts is not a full substitute for the original equipment Snow Plow Preparation Package.

Warning: Lift Arm extends beyond bumper of vehicle. To minimize damage from a front-end collision, Lift Arm should be removed from vehicle when Snow Plow is removed.

PARTS LIST

Item	Part No.	Qty.	Description
	17133	1	MOUNTING CARTON
1	19152	1	• Lift Frame
2	11790	1	• Hanger Weldment
3	19019	1	• LH Push Plate Weld
4	19020	1	• RH Push Plate Weld
5	14219	1	• Lift Arm
6	19168	2	• GMC 45/5500 Light Bracket
	08786	1	• HARDWARE BAG
7	20096	3	•• Bolt H 1/2-13 x 1-3/4" Gr. 5
8	20098	1	•• Bolt H 1/2-13 x 2-1/4" Gr. 5
9	20144	1	•• Bolt H 5/8-11 x 2-3/4" Gr. 5
10	20146	2	•• Bolt H 5/8-11 x 3-1/4" Gr. 5
11	20164	2	•• Bolt H 3/4-10 x 2" Gr. 5
12	20165	2	•• Bolt H 3/4-10 x 2-1/4" Gr. 5
13	20355	2	•• Flatwasher 1/2"
14	22257	2	•• Special Washer 7/16"
15	20359	2	•• Flatwasher 3/4"
16	20307	4	•• Locknut Esna 1/2-13
17	20309	3	•• Locknut Esna 5/8-11
18	20310	4	•• Locknut Esna 3/4-10
19	10286	2	•• Rivet
20	22083	2	•• Lynch Pin
21	22460	1	•• Male Swivel Elbow 90° SAE 6
22	22388	2	•• Grommet
	16489		SECTOR AND A-FRAME CARTON
23	12793	1	• Sector
	13606	1	• A-Frame
	07017	6	• Trip Spring
	09916	1	• Marker Kit
	13004	1	• Sector Shear Pln
	08556	1	• Hardware Bag

Parts indented are included in the carton, bag or assembly under which they are indented.

Meyer Products reserves the right, under its continuing product improvement program, to change construction or design details, specifications and prices without notice or without incurring any obligation.

GENERAL INFORMATION

CAUTION: Always disconnect battery before beginning installation.

DO NOT BURN holes or **WELD** vehicle frame. This may cause frame failure.

After first use, retighten all mounting bolt connections to specified torque. All mounting bolt connections to be checked periodically for tightness.

Locknuts are furnished **DO NOT** tighten bolts and nuts until installation is complete (unless otherwise specified), then be sure to tighten all attaching parts per specified torque chart.

NOTE: It is important that the Meyer harness, all wires from the Meyer light switch, and all other electrical wires be routed around hot or moving engine parts, and any sharp metal. Protection must be provided to guard against wire damage at these points. All excess or loose wires must be neatly secured using wire ties.

Check contents against the parts list to determine all are correct and included, and also to familiarize yourself with them.

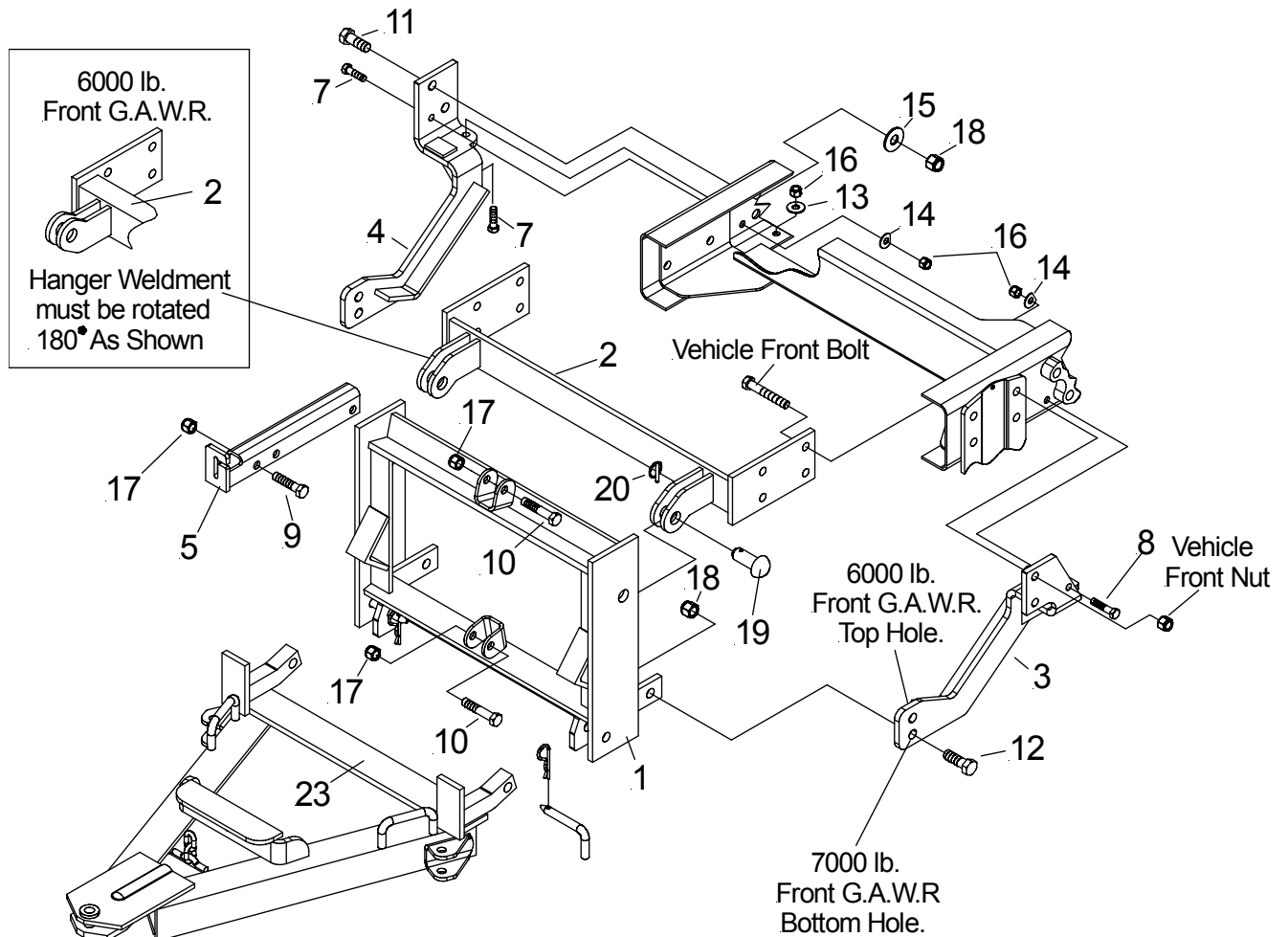
SAFETY PRECAUTIONS should be used when **Hydraulic Unit is in OPERATION** and plow is in a **RAISED** position. **Lower plow to ground when vehicle is PARKED.**

OVERHAUL and **SERVICE INFORMATION** are covered on separate instructions.

Follow these instructions explicitly. Warranty does not apply to a Meyer product which has been negligently or improperly assembled or installed.

TORQUE CHART FOOT LBS.

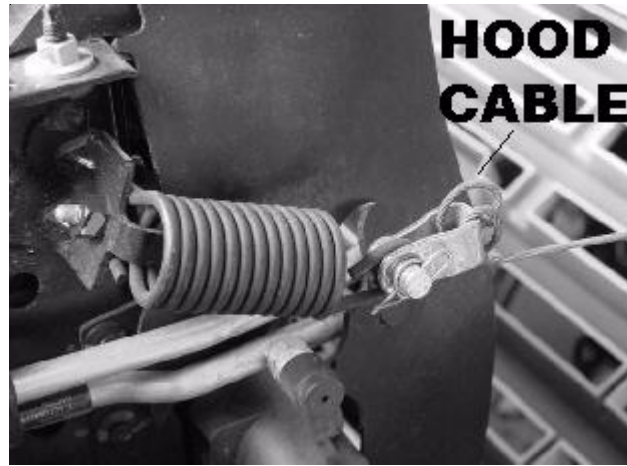
Bolt Nut Size	Gr. 2	Gr. 5	Gr. 8
1/4 - 20	4 - 5		
5/16 - 18	9 - 11		
3/8 - 16	17 - 20		
7/16 - 14		26 - 29	
1/2 - 13		42 - 46	60 - 66
5/8 - 11		127 - 141	179 - 198
3/4 - 10		227 - 251	



Meyer Products assumes no responsibility for installations not made in accordance with these instructions.

INSTALLATION INSTRUCTIONS

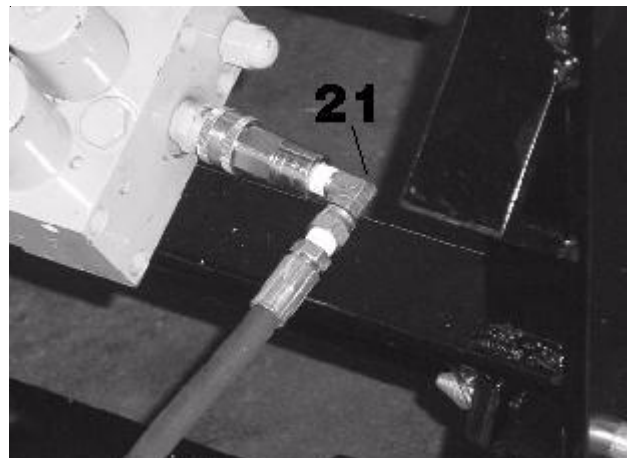
- A. Pre-Assemble Moldboard Assembly, A-Frame (23), Sector, etc., per separate instructions.
- B. Remove front bumper by removing four nuts on the back side.
- C. Remove four "vehicle frame bolts/nuts" on each side of the frame that hold the front leaf spring brackets/towhooks (if equipped). Retain all hardware, it will be reused. **Note for vehicles equipped with towhooks:** The towhooks will not be reinstalled.
- D. Position Hanger Weld (2) inside the frame rails and bumper support brackets. See illustration. Attach Hanger Weld (2) to the passenger side frame using the same bolts/nuts that were removed in step B. Attach Hanger Weld (2) to the driver side frame using the same bolts/nuts that were removed in step "C" except front bolts (longer) may need to be installed in the rear holes and vice-versa to allow for enough thread length for next step. Leave the two nuts off on the driver's side rear holes only. Snug the other six bolts.
- E. Remove underside crossmember's front bolt with tube spacer and nut on each side. Attach LH Push Plate Weld's (3) front two holes to the rear vehicle frame bolts/nuts from the previous step on the drivers side. Attach the rear hole through frame using a 1/2-13 x 2 1/4" bolt (8), special washer (14), and locknut (16). Attach underside hole to the bottom of the frame using a 1/2-13 x 1 3/4" bolt (7), 1/2" washer (13), and locknut (16). Snug bolts at this time.
- F. Attach RH Push Plate Weld's (4) two large holes to the vehicle frame using 3/4-10 x 2" bolts (11), 3/4 washers (15), and locknuts (18). Attach the smaller hole to frame using a 1/2-13 x 1 3/4" bolt (7), special washer (14), and locknut (16). Attach underside hole to the bottom of the frame using a 1/2-13 x 1 3/4" bolt (7), 1/2" washer (13), and locknut (16). Snug bolts at this time.
- G. Reinstall bumper at this time using original hardware. Note: The large bumper openings go through Hanger's (2) ears.
- H. Install Lift Frame (1) to Hanger's (2) ears using Rivets (19) and Lynch Pins (20). Attach Lift Frame's (1) lower ears to Push Plate Welds (3&4) using 3/4-10 x 2 1/4" bolts (12), and locknuts (18).
- I. Tighten all fasteners to their proper torque. Tighten bolts in the same order they were assembled to the vehicle.
- J. Attach lift arm (5) to lift frame (1) using 5/8-11 x 3-1/4" bolt (10) and locknut (17). Mount Hydraulic unit to lift frame using 5/8-11 x 3-1/4" bolt (10) and locknut (17), and to lift arm (5) using 5/8-11 x 2-3/4" bolt (9) and locknut (17). **(SEE LIFT ARM WARNING)**
- K. **For vehicles without a fixed grill:** Adjust tilt hood cables by wrapping them around the clip as shown (upper right) so that the hood does not contact the mount when open.



- L. Remove vehicle turn signals (below) by unplugging and removing nuts under the hood. Sandwich Light Brackets (6) between the turn signal and the hood and reattach using same nuts. Plug turn signals back in. Carefully drill/file a 1" hole under turn signal for installation of Grommet (22) when installing Nite Saber kit as shown. Note: Grommet (22) will need to be cut on one side to slip over wire loom before being installed into the 1" hole.



- M. Install hydraulic system and snow plow lights per separate instructions. While installing hydraulics note that Male SAE Elbow (21) will need to be installed. Between the female coupler and the end of the angling hose as shown below.



- N. Hook the A-Frame chain to the Lift Arm (5) allowing sufficient slack to enable the Moldboard to follow ground contour while plowing.