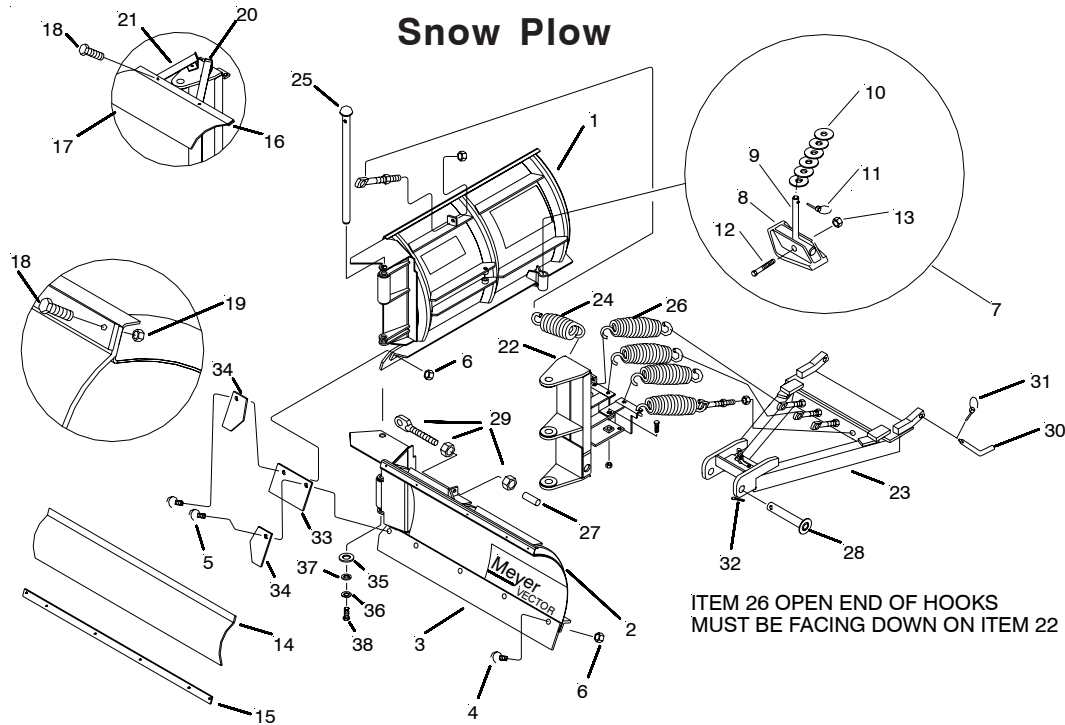


Parts & Installation Instructions

Model "Vector" 8.5

Snow Plow



Parts List

| Item | 8.5 | Qty. | Description | Item | 8.5 | Qty. | Description |
|------|-------|------|--|------|-------|------|---------------------------------|
| | 09258 | 2 | Moldboard R.H. & L.H. Wing | | 16506 | 1 | A-Frame and Pivot Carton |
| 1 | 09254 | 1 | • R.H. Wing | 22 | 13625 | 1 | • Pivot Assembly |
| 2 | 09255 | 1 | • L.H. Wing | 23 | 13630 | 1 | • A-Frame |
| 3 | 09259 | 1 | • Cutting Edge (2 sections) | 24 | 07178 | 2 | • Wing Spring |
| | 08692 | 1 | • Hardware Bag | 25 | 07069 | 1 | • Hinge Pin |
| 4 | 21961 | 8 | •• Bolt C 1/2-13 x 2 Gr. 5 | 26 | 07216 | 4 | • Trip Spring |
| 5 | 22066 | 2 | •• Bolt C 1/2-13 x 2-3/4 Gr. 5 | | 11793 | 1 | • Lift Arm |
| 6 | 20307 | 10 | •• Locknut 1/2-13 | | 09916 | 1 | • Plow Marker Kit |
| 7 | 09126 | 2 | • Runner & Spindle Assembly | | 08687 | 1 | • Hardware Bag |
| 8 | 07006 | 1 | •• Runner | 27 | 07031 | 6 | •• Eye Bolt Cap |
| 9 | 12057 | 1 | •• Spindle | 28 | 12396 | 1 | •• Pivot Pin |
| 10 | 20363 | 10 | •• Flatwasher 1-1/4" | 29 | 09124 | 6 | •• Eye Bolt w/Locknut |
| 11 | 22083 | 1 | •• Linch Pin | 30 | 11101 | 2 | •• Hinge Pin |
| 12 | 20101 | 1 | •• Bolt H-1/2-13 x 3" | 31 | 22083 | 2 | •• Linch Pin |
| 13 | 20307 | 1 | •• Locknut 1/2-13 | 32 | 20421 | 1 | •• Cotter Pin 1/4" x 2-1/4" |
| | 12170 | 1 | Snow Deflector KIT (OPTIONAL) | 33 | 12198 | 1 | •• V-Plow Center Edge |
| 14 | 12189 | 2 | • Deflector | 34 | 12381 | 2 | •• Center Plate |
| 15 | 12191 | 2 | • Bar | 35 | 20357 | 1 | •• 5/8 Flatwasher |
| 16 | 12277 | 1 | • Reinforcement Bar | 36 | 20328 | 1 | •• 7/16 Lockwasher |
| 17 | 12285 | 1 | • Center Deflector & Decal | 37 | 20354 | 1 | •• 7/16 Flatwasher |
| | 08691 | 1 | • Hardware Bag | 38 | 20072 | 1 | •• Bolt H 7/16-14 x 1-1/4" |
| 18 | 20006 | 18 | •• Bolt H 1/4-20 x 1-1/4" | | 07996 | 1 | •• Cable Tie |
| 19 | 20312 | 18 | •• Nut, Esllok 1/4-20 | | | | |
| 20 | 12275 | 2 | •• Angle | | | | |
| 21 | 12276 | 2 | •• Deflector Extension | | | | |

Parts indented are included in the carton, bag or assembly under which they are indented.

When ordering parts, furnish Part No., Name, and Description. Also furnish Vehicle Model and Year, Type of Hydraulic Unit and Moldboard Size.

Meyer Products reserves the right, under its continuing product improvement program, to change construction or design details, specifications and prices without notice or without incurring any obligation

INSTALLATION INSTRUCTIONS

Note: The following instructions cover assembly of Moldboard Wings, Pivot Assembly and A-Frame. Refer to separate instructions for installation of plow mounting and hydraulic system.

- A. Assemble Pivot Assembly (22) to A-Frame (23) using Pivot Pin (28) and Cotter Pin (32). **Note: Liberally coat Pivot Pin with a chassis grease/anti-seize lubricant.**
- B. Assemble Eye Bolts W/Locknut (29) to Trip Springs (24&26). Install four Trip Springs (26) onto Pivot Assembly (22). (Open end of hooks must be facing down on pivot assembly.)
- C. Guide Eyebolts into A-Frame (23) Attach Eye Bolts (29) to A-Frame (23),
- D. Make certain each Eye Bolt (29) is in a vertical position as shown in figure 1 so that the Eye Bolt (29) and Trip Spring (26) hinge properly when moldboard trips.

Note: Proper tension is attained when Trip Spring (26) coils just begin to separate and then tightening top locknut four additional turns.

- E. **IMPORTANT : PIVOT ASSEMBLY MUST BE TIGHT AGAINST A-FRAME STOP.**
- F. Assemble L.H. & R.H. Wings to Pivot Assembly using Hinge Pin (25), Washer 5/8 (35), Lockwasher 7/16 (36), Washer 7/16 (37) and Bolt H 7/16-14 x 1-1/4" (38).
- G. Install Power Angling Rams per separate instructions.
- H. Install Wing return Springs (24) using Eyebolts (29) and adjust springs to proper tension.
- I. Discard lift arm in mounting carton (10514).

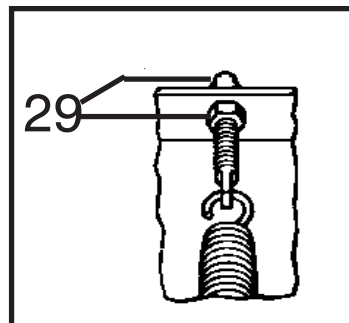


Figure 1