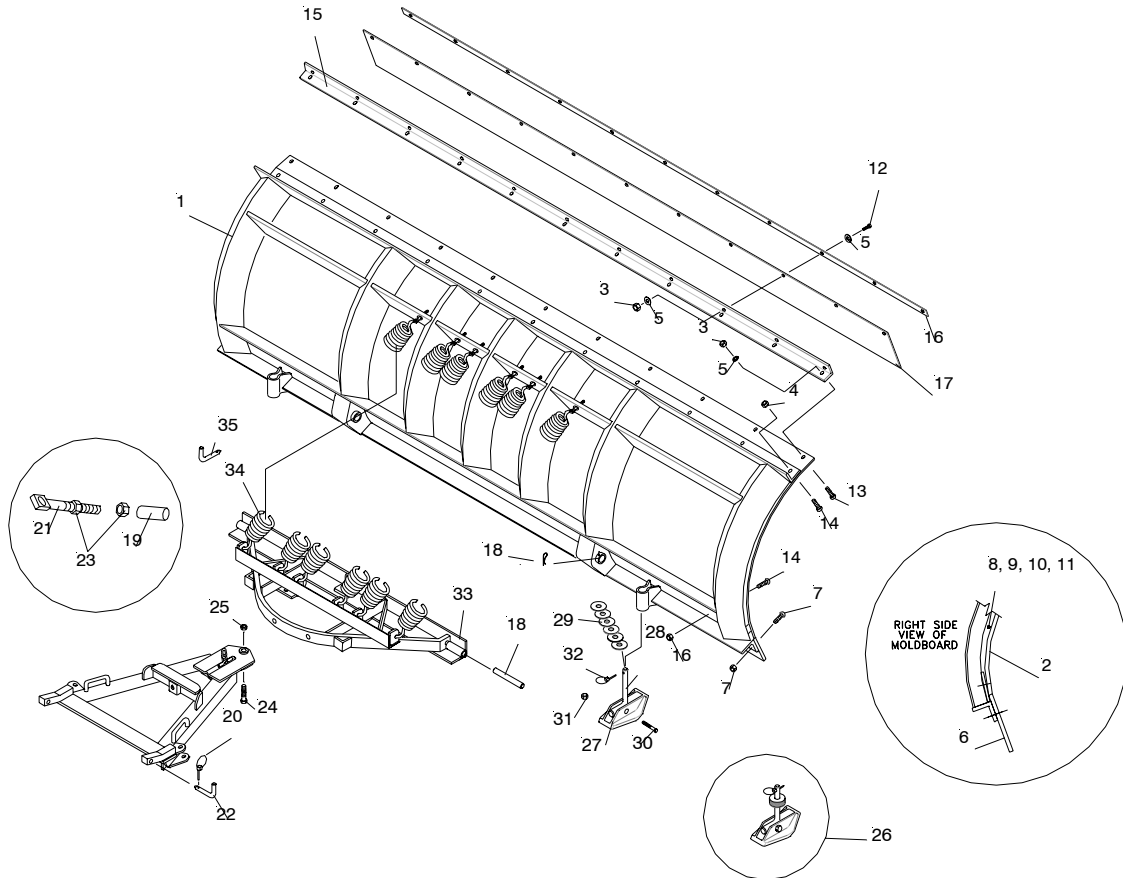


# Parts & Installation Instructions

## Polyethelene Snow Plows

### Models HMP-9.0 and HMP-10.0



#### PARTS LIST

Item	HMP-9.0	Qty	HMP-10	Qty	Description	Item	Part #	Qty	Description
	09248	1	09249	1	<b>Moldboard Assembly</b>		08556	1	<b>Snow Plow Hardware Bag</b>
1	12090	1	12100	1	• Moldboard Frame	18	09119	2	• Pivot Pin w/Fttg. & Hair Pin cotter
2	12095	1	12105	1	• Plastic Sheet	19	07031	6	• Eye Bolt Cap
3	20314	20	20314	22	• Locknut 3/8-16	20	22083	2	• Linch Pin
4	20307	19	20307	21	• Locknut 1/2-13	21	09124	6	• Eye Bolt w/Locknut
5	20353	30	20353	33	• 3/8" Flat Washer	22	10958	2	• Hinge Pin
6	07259	1	07235	1	• Cutting Edge	23	20318	12	• Nut Eslok 5/8-11
7	08318	1	08318	1	• Bolt C 5/8-11 x 2-1/4" Gr. 5 & Locknut (Kit of 12)	24	20171	1	• Bolt H 3/4-10 x 3-3/4" Gr.5
8	12373	3	12373	3	• R.I. Inside Bottom Rib	25	20310	1	• Locknut Esna 3/4-10
9	12374	3	12374	3	• R.I. Inside Top Rib	26	09592	2	<b>Runner &amp; Spindle Assembly</b>
10	12375	2	12375	2	• R.I. Outside Rib	27	07086	1	• Runner
11	12378	2	12378	2	• R.I. Inside Pivot Rib	28	12057	1	• Spindle
12	22193	10	22193	11	• Bolt H 3/8-16 x 1" Gr.2	29	20363	10	• Flatwasher 1-1/4"
13	22191	10	22191	11	• Bolt C 3/8-16 x 1" Gr. 1	30	-----	1	• Bolt
14	22190	19	22190	21	• Bolt C 1/2-13 x 1-3/4" Gr.5	31	-----	1	• Locknut 1/2-13
15	12116	1	12117	1	• Angle Support	32	22083	1	• Linch Pin
16	12123	1	12124	1	<b>Snow Deflector Kit</b>		-----		<b>Sector and A-Frame Carton</b>
17	12031	1	12032	1	• Bar Reinforcement	33	12793	1	• Sector
	12118	1	12119	1	• Snow Deflector		-----		• A-Frame
	08615	1	08616	1	• Deflector Hardware Bag	34	07017	6	• Trip Spring
							09916	1	• Marker Kit
							13004	1	• Sector Shear Pin

Parts indented are included in the assembly under which they are indented.

## INSTALLATION INSTRUCTIONS

Note: The following instructions cover assembly of Moldboard, Sector and A-Frame. Refer to separate instructions for installation of plow mounting and hydraulic system.

- a. Liberally coat Pivot Pins (18) with chassis lubricant.
- b. Attach Sector (33) to Moldboard (1) with Pivot Pins (18) and insert Hair Pin Cotter. Grease Pivot Pin using grease fitting.
- c. Attach Eye Bolts (21) to Moldboard (1) and trip Springs (34) to Sector (33), making certain locknuts (31) are positioned as shown in Figure 2.
- d. Make certain each Eye Bolt (21) is in a vertical position as shown in figure 1 so that the Eye Bolt (21) and Trip Spring (34) hinge properly when moldboard trips.

Note: Proper tension is attained when Trip Spring (34) coils just begin to separate and then tightening top locknut four additional turns.

- e. Attach A-Frame to Sector (33) as shown in Figure 2. **IMPORTANT:** Install King Bolt (25) from bottom so that locknut is on top.

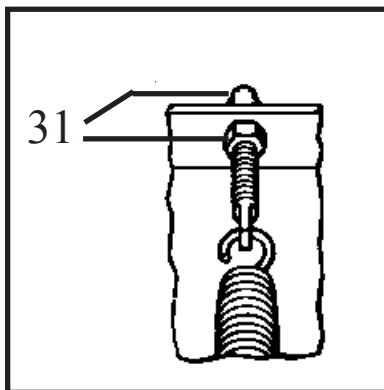


Figure 1

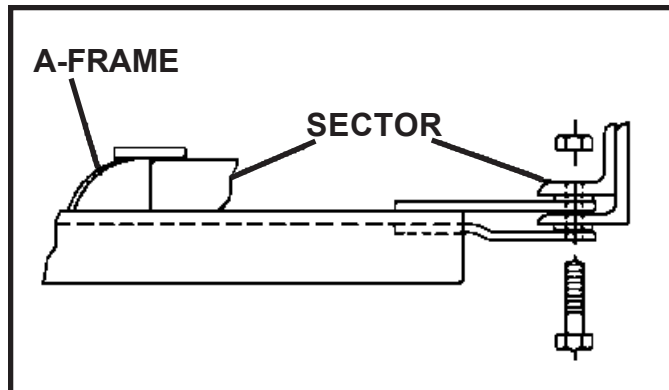


Figure 2