



PARTS & INSTALLATION INSTRUCTIONS

Ford Ranger & Bronco II

4 x 4 Vehicles Thru 89

IMPORTANT NOTICE

End user must be given this instruction sheet prior to delivery of this Snow Plow.

The equipment you have just purchased should only be used on vehicles equipped with the Manufacturer's Snow Plow Preparation Packages. Snow Plowing without the original Snow Plow Preparation Package may damage your vehicle and the added weight to the equipment may impair the operation and control of the vehicle. Snow Plowing with a vehicle that the manufacturer does not recommend for that purpose may void your new vehicle warranty. If your vehicle is not originally equipped with the Snow Plow Package, additional parts may be necessary before snow plowing. Owners of these vehicles should consult their dealers before purchase or installation of such parts. CAUTION: the installation, on any vehicle, of these parts is not a full substitute for the original equipment Snow Plow Preparation Package.

Warning: Lift Arm extends beyond bumper of vehicle. To minimize damage from a front-end collision, Lift Arm should be removed from vehicle when Snow Plow is removed.

Mounting Carton L/PAF 18057 / Mounting Carton W/PAF 18058

Parts List

Item	Part No.	PartNo.	Qty.	Description
	18057	18058	1	Mounting Carton
1	11320	11320	1	• Clevis Frame
2	11314	11314	1	• Sidemember R.H.
3	11315	11315	1	• Sidemember L.H.
4	10514	10514	1	• Lift Arm
	-----	12978	2	• Trip Spring
	-----	12984	1	• Pivot Bar
	-----	13594	1	• A-Frame Tubular
5	11462	11462	2	• Receiver Tube Cap-TM
	08607	08607	1	Hardware Bag
6	11006	11006	2	• Hinge Pin
7	20139	20139	4	• Bolt H 5/8-11 x 1-1/2" Gr. 5
8	20140	20140	8	• Bolt H 5/8-11 x 1-3/4" Gr. 5
9	20144	20144	1	• Bolt H 5/8-11 x 2-3/4" Gr. 5
10	20146	20146	2	• Bolt H 5/8-11 x 3-1/4" Gr. 5
11	20309	20309	15	• Locknut 5/8-11
12	20357	20357	4	• Flatwasher 5/8"
13	21984	21984	2	• Hair Pin Cotter
	-----	08511	1	• Snow Plow Hardware Bag
	-----	09916	1	• Marker Kit
14	11275	11275	1	Lift Frame

Parts indented are included in the assembly under which they are indented.

Meyer Products reserves the right, under its continuing product improvement program, to change construction or design details, specifications and prices without notice or without incurring any obligation.

GENERAL INFORMATION

CAUTION: Always disconnect battery before beginning installation.

DO NOT BURN holes or **WELD** vehicle frame. This may cause frame failure.

After first use, re-tighten all mounting bolt connections to specified torque. All mounting bolt connections to be checked periodically for tightness.

Locknuts are furnished **DO NOT** tighten bolts and nuts until installation is complete (unless otherwise specified), then be sure to tighten all attaching parts per specified torque chart.

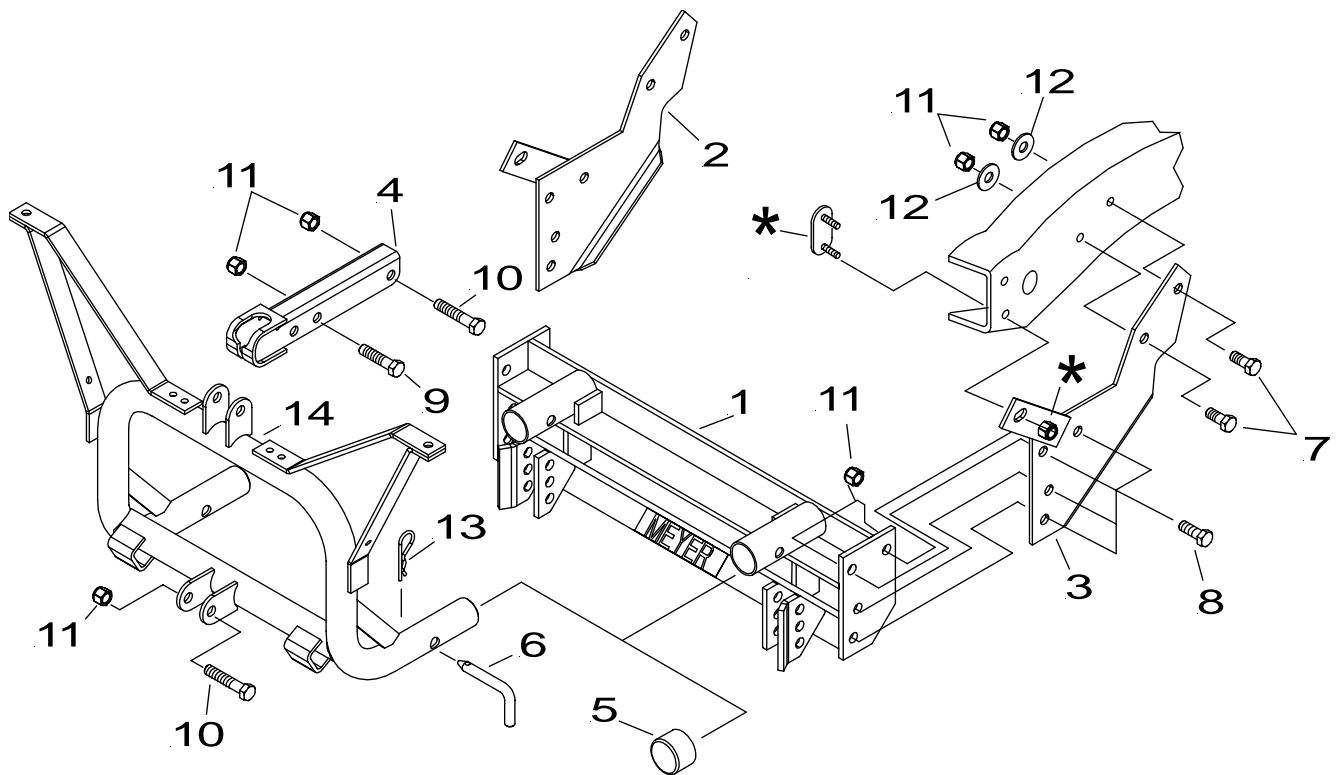
Follow these instructions explicitly. Warranty does not apply to a Meyer product which has been negligently or improperly assembled or installed.

NOTE: It is important that the Meyer harness, all wires from the Meyer light switch, and all other electrical wires be routed around hot or moving engine parts, and any sharp metal. Protection must be provided to guard against wire damage at these points. All excess or loose wires must be neatly secured using wire ties.

Check contents against the parts list to determine all are correct and included, and also to familiarize yourself with them.

SAFETY PRECAUTIONS should be used when **Hydraulic Unit is in OPERATION** and plow is in a **RAISED** position. **Lower plow to ground when vehicle is PARKED.**

OVERHAUL and **SERVICE INFORMATION** are covered on separate instructions.



* DENOTES ORIGINAL VEHICLE FASTENERS

INSTALLATION INSTRUCTIONS

Note: Installation of this mounting requires removal or cutting of front air dam to allow mounting clearance.

- A. Remove front bumper at bumper brackets by removing stud plates and nuts (*). Retain all hardware (*) They will be reused.
- B. Place RH and LH side plate weldments (2 & 3) against vehicle frame. Attach using 5/8-11 x 1-1/2" bolts (7), flatwashers (12), and locknuts (11). Do not tighten at this time.
- C. Reinstall bumper to bumper bracket and side plate weldments (2 & 3). Attach using original vehicle fasteners (*) as shown.
- D. Position clevis frame (1) to inside of side plate weldments (2 & 3). Attach using 5/8-11 x 1-3/4" bolts (8) and locknuts (11). Do not tighten at this time.

Note: Before tightening the fasteners, the clevis frame should be pushed back as far as possible under the vehicle.




- E. Tighten all fasteners to their proper torque. Tighten bolts in the same order they were assembled to the vehicle.

Note: Before installing lift frame tubing to clevis frame, liberally coat ends of lift frame with chasis grease anti-sieze lubricant.

- F. Install lift frame (14) into the tubes on clevis frame (1) using hinge pins (6) and hair pin cotters (13). Note: Before installing lift frame tubing to clevis frame, liberally coat ends of lift frame with chassis grease.
- G. Install lights making certain there is clearance behind the lights for opening the vehicle hood. Lights must be aimed to comply with Federal Regulations.
- H. Install plow light wiring per separate instructions.
- I. Attach lift arm (4) to lift frame (14) using 5/8-11 x 3-1/4" bolt (10) and locknut (11). Mount power unit to lift frame with 5/8-11 x 3-1/4" bolt (10) and locknut (11), and to lift arm (4) using 5/8-11 x 2-3/4" bolt (9) and locknut (11).
- J. Install Electro-Touch wiring system per separate instructions.
- K. Attach Moldboard Assembly per sererate instructions. Form 1-694

Note: When the lift frame module (14) is removed from the vehicle, the insides of clevis frame (1) receiver tubes and outside ends of the lift frame should be coated with chassis grease/anti-seize lubricant and the protective receiver tube caps (5) installed over the clevis frame receiver tubes.

TORQUE CHART FOOT LBS.

Bolt Nut Size	Gr. 2 	Gr. 5 	Gr. 8 
1/4 - 20	4 - 5		
5/16 - 18	9 - 11		
3/8 - 16	17 - 20	26 - 29	
7/16 - 14		42 - 46	60 - 66
1/2 - 13		64 - 72	90 - 100
5/8 - 11		127 - 141	179 - 198
3/4 - 10		227 - 251	

Meyer Products assumes no responsibility for installations not made in accordance with these instructions.