

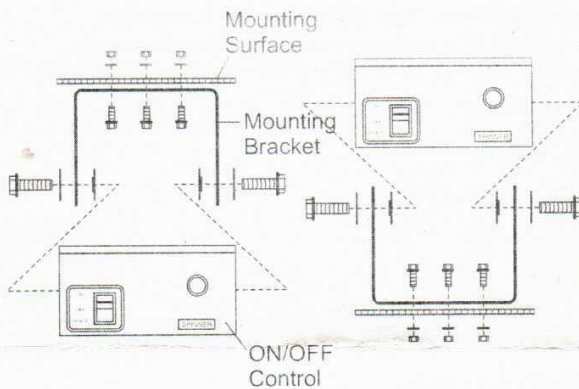
## TAILGATE SPREADER ON/OFF CAB CONTROL

### INSTALLATION INSTRUCTIONS

#### **⚠ WARNING**

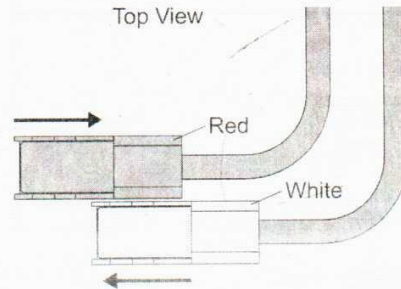
Do not install this product in deployment path of an air bag. Refer to vehicle manufacturer's manual for air bag deployment area(s).

**NOTE:** The cab control can be top or bottom mounted using the supplied mounting bracket or an existing snowplow control bracket.

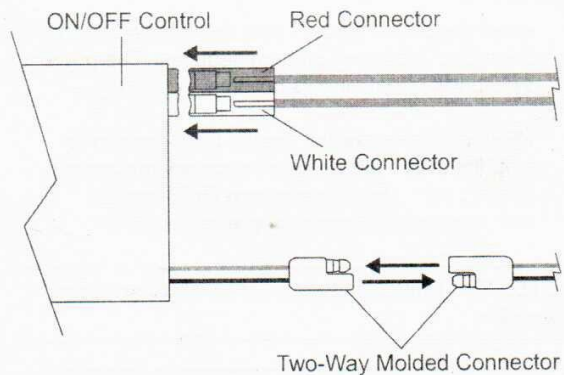


1. Locate a convenient position in the cab to mount the control that will not interfere with other equipment and will avoid unintentional starting of the spreader.
2. Attach the mounting bracket to the vehicle with three #10-24 x 3/8" tapping screws, #10 spring lock washers and #10-24 hex nuts as shown.
3. Place the control with a 1/4" nylon washer on each side into the mounting bracket and secure with the 1/4-20 x 1" machine screws and flat washers through the mounting hole on each side.

4. The red and white connectors on the ends of the two red 8-gauge wires are interlocking. Lock the connectors together.

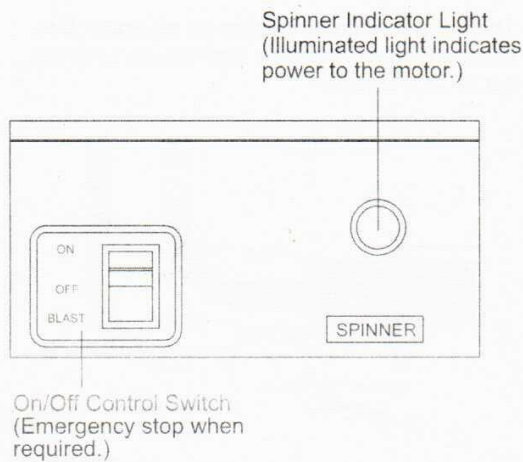


5. Plug the 2-way molded connector from the vehicle wiring harness into the matching connector extending from the rear of the cab control as shown below.
6. Connect the interlocked connectors from Step 4 to matching connectors located on the back of the control. Match red with red, and white with white.



## TAILGATE SPREADER ON/OFF CAB CONTROL

### OPERATING INSTRUCTIONS



### Blast/Maximum Speed

Move and hold the power switch to the BLAST position for as long as maximum speed is needed. When released, the switch will automatically return to the OFF position and stop the motor.

**NOTE:** Always place the cover on the hopper to prevent moisture buildup. Do not let the spreader sit idle with material in the hopper for an extended period of time. This can cause the material to compact and reduce or stop the flow of material.

### **▲ WARNING**

Before starting the spreader, the driver shall verify all bystanders are a minimum of 25 feet away from operating spreader.

### Starting and Stopping the Motor

1. Move the power switch to the ON position to start the motor. Motor will start immediately. The power switch will remain in this position.
2. Move the power switch the the OFF position to stop the motor. The power switch will remain in this position. The power switch OFF position operates as emergency stop when required.

**NOTE:** The truck ignition must be on to start the spreader.

**NOTE:** If the truck ignition is turned off while the spreader is running, the motor will stop.

The company reserves the right under its product improvement policy to change construction or design details and furnish equipment when so altered without reference to illustrations or specifications used. Do not exceed vehicle ratings with a spreader. The company offers a limited warranty for all spreaders. See separately printed page for this important information.